

## T-Mobile®

For billing, coverage, and connectivity questions, please go to [www.support.t-mobile.com](http://www.support.t-mobile.com) or call 1-800-937-8997. For T-Mobile hearing and speech impaired support, call via TTY at 1-877-296-1018. You can also access Help information on your device:

1. From any Home screen, tap **Apps**.
2. Tap **My Account**.

### SERVICE OVERVIEW

T-Mobile offers postpaid monthly overage-free Mobile Broadband data plans and No Annual Contract Mobile Broadband data plans.

### Postpaid Monthly Overage-Free Mobile Broadband Data Plans\*

TA monthly overage-free data plan is ideal if you frequently connect to the Internet and transfer data, such as sending and receiving email, downloading pictures, music, videos, and so on. With a Monthly Overage-Free plan, you can:

- Connect freely to the Internet anywhere on T-Mobile's network using mobile broadband or through Wi-Fi from the included T-Mobile HotSpot account.
- Surf the Web, stream videos, email large files, and download multimedia content. If you are a new T-Mobile customer and your service has not been activated, please call Customer Care at 1-800-937-8997 and a T-Mobile Activations representative will assist you.

\* Two year agreement required.

### No Annual Contract Plans

A No Annual Contract plan is ideal for those who want the same network performance as a monthly overage free data plan, but do not want to sign up for a long-term contract. With a No Annual Contract plan, you can:

- Get a Mobile Broadband Pass online when and where you need it for the amount of time and data that you require.
- Connect freely to the Internet anywhere on T-Mobile's network without having to depend on Wi-Fi.

### Sign up for No Annual Contract

If you choose to sign up for No Annual Contract Broadband service, from any Home screen tap **Apps** and then tap the **GetWebNow** icon to get started. You will be directed to a T-Mobile Activation Web page where you can register and activate your device for use on the T-Mobile network. After setup, you will be directed to select and purchase a Mobile Broadband Pass, which will allow you to browse on the go without connecting to a Wi-Fi network! See brochures and **Terms and Conditions (including arbitration provision)** at [T-Mobile.com](http://T-Mobile.com) for service options.

By activating service, you acknowledge that you have read, understand, and agree to be bound by each of T-Mobile's Terms and Conditions and your Service Agreement.

## Fun with the pen

Use the pen to draw, paint, take notes, and even write on your photos. It can also be a highlighter or eraser.

You can also use the pen to navigate and operate your HTC Flyer. With the pen, you can use it to unlock your screen, slide across Home screen panels, tap onscreen buttons, and more.

Note: In some regions, the pen may not be included in the box. Contact your service provider or retail store for details on purchasing the pen.

### Inserting the battery into the pen

Before you start, install first the supplied battery into the pen.

1. Open the battery cap.
2. With the top end (positive pole) first, insert the supplied battery into the pen.
3. Put back and close the battery cap.

### Writing a note

Use Notes to jot down your ideas.

1. From the Home screen, tap the Notes app.  
Tap **Skip tips** for now if you don't need to sync your notes with an Evernote Account.
2. Tap **Notes > New notebook** to create a new notebook for grouping your notes.
3. Tap **+** to create a new note.
4. When you're finished with your note, tap **≡** and then tap **Save**.

### Writing on your photo

Use Snapbooth to take your closeup shot and then write something on your photo before sharing it.

1. From the Home screen, tap **☐** > **Snapbooth**.
2. Center yourself inside the Viewfinder window.
3. Look at the front camera lens and then tap **📷** to take your photo.
4. After capturing, tap the small thumbnail that shows the photo you've just taken.
5. Use the pen to write something on your photo.
6. When you're done, tap on your photo with your finger, and then tap **📧**.
7. Choose how you want to share your photo (such as send by email or share on Facebook).

### Choosing a pen type, color, or stroke

Press the pen on the **🖋** button at the bottom-right side of your tablet to open the Pen options palette. On the palette, you can choose from a variety of pen types, strokes, and colors.



To find out more about using the pen with your tablet, see the complete user guide.

## Record in HD

Capture those priceless moments in HD and share them with your loved ones.

1. From the Home screen, tap **☐** > **Camcorder**.
2. Tap **Settings > Video quality**, and then select **Online (HD, 10 minutes)**.

This makes sure that the file size of the video can be small enough to be shared.

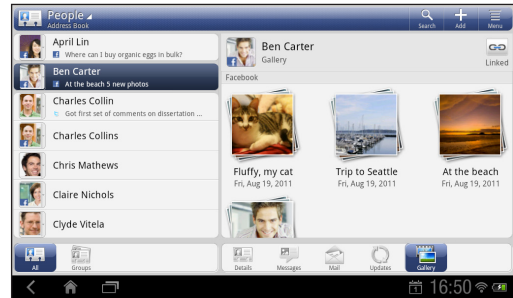
3. Tap **📹** to start recording; tap **📹** again to stop recording.



4. On the review screen, tap **📧**. Choose how you want to share the video.

## Keep in contact

In the People app, you'll see your contacts from your Google Account, Facebook®, and even your Exchange ActiveSync® account if you're signed in to these accounts on your tablet. Aside from their contact details, you'll also see their status updates and birthday reminders if they're your Facebook or Twitter™ friends.



If you have more contacts in your SIM card, you can import them all to your tablet in one go:

1. From the Home screen, tap **☐** > **People**.
2. Tap **≡** > **Import/Export > Import from SIM card**.
3. Tap **≡** > **Select all > Save**.

You can also add new contacts:

1. From the Home screen, tap **☐** > **People**.
2. Tap **+**, and then enter the contact information in the relevant fields.
3. When done, tap **Save**.

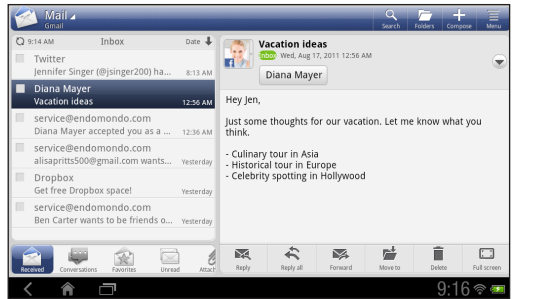
## Email

If you signed into your Google Account when you first set up your tablet, you'll be able to send and receive Gmail messages. From the Home screen, just tap **☐** > **Gmail**.

Use the Mail app to set up and manage your other email accounts such as POP3, IMAP, or Exchange ActiveSync.

1. From the Home screen, tap **☐** > **Mail**.
2. On the Choose a mail provider screen, choose the type of email account to set up.  
If you don't see this screen, press **≡** > **New account**, and then choose the type of email account.
3. Enter your email address and password.
4. Follow the onscreen instructions to finish setting up your email account.

You can check your email messages just in one place without having to switch to different accounts. Just choose the **All accounts** inbox.



Email messages are color coded so you can easily distinguish which email accounts they belong to.

## Get HTC Sync

You can use the HTC Sync software to sync contacts, calendar, and other information between your computer and your tablet.

Go to our support website ([www.htc.com/support](http://www.htc.com/support)) to download HTC Sync and install it on your computer.

## Battery saving tips

### Setting power saver

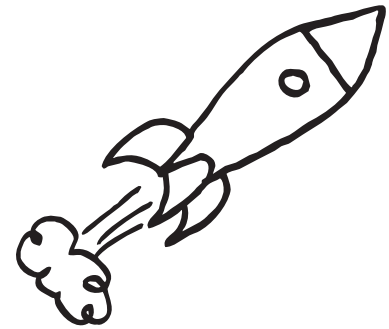
Set your tablet to automatically switch to power saver mode when the battery level reaches a certain level.

1. From the Home screen, tap the time in the lower right corner, and then tap **⚙** > **Settings > Power**.
2. Select the **Enable power efficiency** check box to turn off auto sync in apps that access the network to update data.
3. Make sure the **Enable power saver** check box is selected.
4. Tap **Turn power saver on at** and **Power saver settings** to set power saver options.

### Turning off wireless functions

1. From the Home screen, tap the time in the lower right corner, and then tap **⚙** > **Settings**.
2. Tap **Wireless & networks**.
3. Turn off wireless functions such as **Bluetooth**, **Mobile network**, **Wi-Fi**, and any of the **Tethering & portable hotspot** options when they're not in use.

## Your HTC Flyer Quick guide



For the complete user guide and other helpful resources, go to [www.htc.com/support](http://www.htc.com/support). Please also read the Safety and regulatory guide that's included in the box.

**htc**  
quietly brilliant

# Before you do anything else, please read this

## Charge the tablet

Your tablet hasn't been charged yet. Please use the supplied power adapter to do a full charge before using it. Also, please don't try to take your tablet apart. (If you do, it may invalidate your warranty.)

## Choose a rate plan wisely

Depending on how you use your tablet, it can use up a lot of Internet bandwidth really quickly. Before you use your tablet, we strongly recommend that you talk to your mobile operator about data rates.

## And finally, a few important words from our legal team (LIMITATION OF DAMAGES)

To the maximum extent permitted by applicable law, in no event shall HTC or its affiliates be liable to you, any user, or third party for any indirect, special, consequential, incidental or punitive damages of any kind, arising in contract, tort, or otherwise, including, but not limited to, injury, loss of revenue, loss of goodwill, loss of business opportunity, loss of data, and/or loss of profits, regardless of the foreseeability thereof or whether HTC or its affiliates have been advised of the possibility of such damages. And in no event shall the total liability of HTC or its affiliates exceed the amount received from you, regardless of the legal theory under which the cause of action is brought. The foregoing does not affect any statutory rights which may not be disclaimed.

## HTC Support

For software, hardware, troubleshooting, warranty questions, please go to <http://www.htc.com/us/support> or call 1-866-449-8358.

## Get to know your tablet



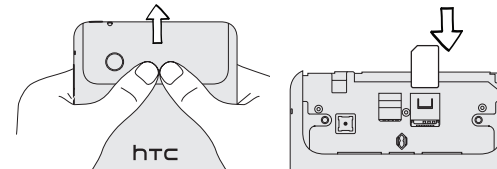
The PEN OPTIONS button lights up when your tablet is on (and is not in sleep mode).

## Before you turn on your HTC Flyer

Make sure you prepare your tablet correctly before you press the POWER button.

### Inserting your SIM card

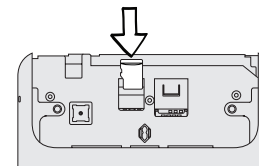
1. With your thumbs, push the top cover out to remove it.
2. Insert the SIM card into the SIM card slot with its gold contacts facing down and cut-off corner facing out.



### Inserting a microSD card

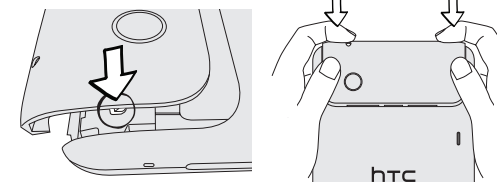
Your tablet already has internal storage for saving data and files. But if you want even more storage space, you can purchase and use a microSD card with your tablet.

Insert your microSD card into the storage card slot with its gold contacts facing down, and push it in until it clicks into place.



### Replacing the top cover

1. Align the two teeth underneath the top cover (one on each side) with the two notches on top of the tablet.
2. Place the top cover, gently press down on the cover with your thumbs, and then push it in until it clicks and locks into place.



### Charging the battery

Your tablet has a built-in (non-removable) rechargeable battery. Connect the supplied power adapter to charge your tablet.

To charge the battery, connect the supplied power adapter to your tablet's USB charging port.

## Set up your tablet

The first time you turn on your tablet, you'll be guided to transfer contacts using Bluetooth, set up your email and social network accounts, and more. Be sure to sign in to your Google™ Account so you can use Google apps such as Gmail™ and Android Market™ on your tablet.

## Your Home screen

Almost anything you want is only a swipe and a tap away on your Home screen. Smoothly roll around the screens to see your favorite apps or widgets that show live updates of social network feeds, weather forecasts, email, and more. Customize your tablet your way.



## Personalize your tablet

### Adding a widget

Widgets put at-a-glance important updates and info up front on your Home screen. Some widgets are already added to your Home screen. You can add more from the preset selections.

1. On the Home screen, tap **+** and choose the item that you want to add.
2. Press and hold the widget you want to add, then drag it to any Home screen thumbnail that shows available space. Red thumbnails mean that the widget cannot fit.



### Rearranging icons

Icons can be rearranged to suit your taste. Think of it as remodeling your virtual environment.

1. To move an icon, first press and hold it.
2. Then drag it to a new location. When you drag it to a spot that's occupied by another icon, the new icon moves it out of the way.

## Lock screen

When your tablet becomes idle, it turns the display off and goes to sleep mode to save battery power. Simply press POWER to turn the display back on.

You'll then see the Lock screen. To unlock the screen, you can:



Drag the ring upward.

Drag an app down to the ring to unlock the screen and directly go to that app.

### Personalizing the Lock screen

You can change the apps on the Lock screen to your favorite ones. From the Home screen, tap **+** > **Lock screen**. You can choose to have shortcuts or not, or even display the current weather conditions.

## Connect to the Internet

### Using a data connection

It's simple. When you turn your tablet on for the first time (with the SIM card inserted), it should connect automatically to your mobile operator's data service. If presented with a list of mobile operators to choose from, make sure that you select the correct one for your SIM card. If you're not sure, contact your service provider.

### Using Wi-Fi

1. From the Home screen, tap the time in the lower right corner and then tap **+** > **Settings** > **Wireless & networks**.
2. Select the **Wi-Fi** check box to turn Wi-Fi on.
3. Tap **Wi-Fi settings**, and then choose a Wi-Fi network to connect to.

## Fast browsing

Enjoy fast web browsing on your tablet. With the powerful processor, you can be sure that viewing web pages will be smooth. Also, your HTC Tablet comes with Adobe® Flash® support so that you can browse Flash enabled websites.

On the Home screen, tap **Internet** to open the web browser.

