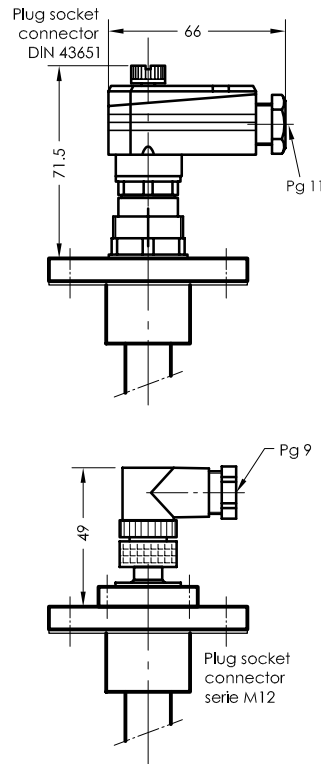
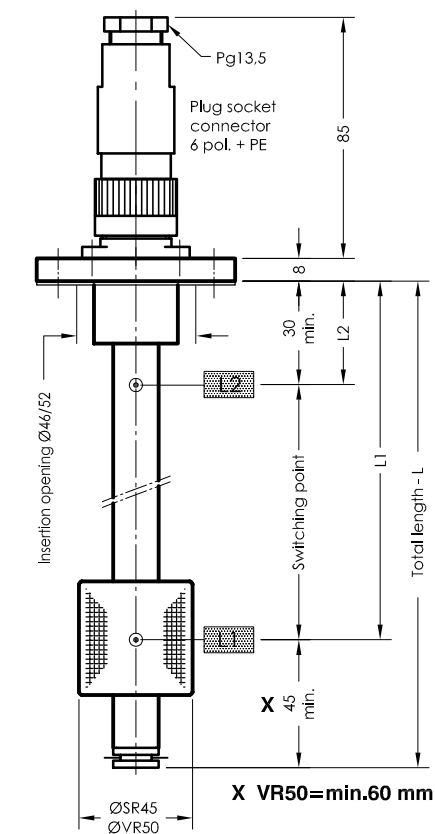


NR 70 - TMA

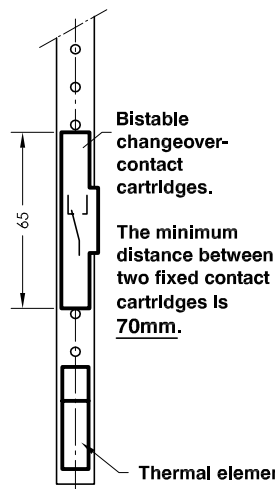
Level temperature regulator for tank insert 4-20 mA

serial No. Date
MA-GB- 300 02/12



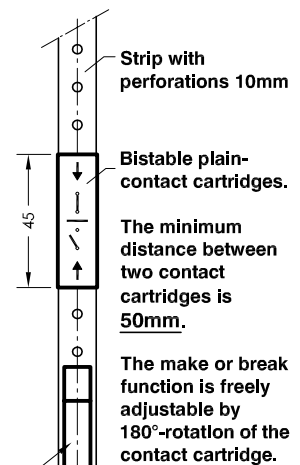
Level contact

-04-

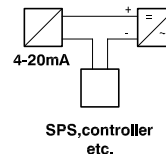


Level contact

-03-



Temperature

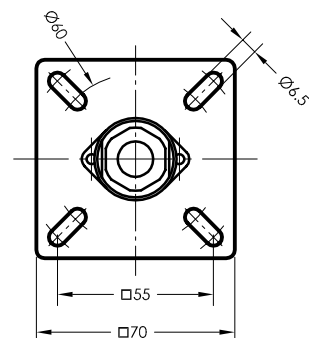


Plug securing

power supply

1 = Temperature
2 = +24VDC

3-4 = L1
3-5 = L2
3-6 = L3 } Level



Specimen order

NR 70 - TMA-SR45-L300-03-L1/200/S-M12

Float type
SR45
VR50

Total length-L
switching tube (mm)

Level contact type
01 = fixed, plain
02 = fixed, changeover
03 = adjustable, plain
04 = adjustable, changeover

Switching point L1-L3/
mm from sealing edge

Ö = break
S = make
W = changeover
Function with
increasing level

Description

The level temperature regulator type NR 70 - TMA for tank insert is a solenoid switch operating without contact with the function of monitoring and regulating liquid levels and temperatures.

The switching tube contains bistable protective gas contacts. They may be fixed or alternatively mounted as an adjustable contact cartridge on a perforated strip. For fixed contacts, the contact intervals and their functions must be given. Plain contact cartridges can be subsequently adjusted for height. The function of make or break can then be altered by turning the cartridge through 180° degrees.

The permanent magnet built into the float switches the contacts when the level changes. The switching difference (hysteresis) is 4 mm. For temperature monitoring, the temperature dependent signal emitted from a Pt100 resistor mounted in the contact tube is converted with the installed transducer into a temperature linear current change of 4-20mA.

The level controller is maintenance-free when nondeposit media are used. Any cable length can be used and must be shielded. For inductive loads, a protective circuit must be provided (free-wheeling diode/RC element).

The device must only be installed by specialists.

Technical data

Switching tube	Brass, Ø 20 max. L = 800mm
Connection flange	Polyamid with flat seal
Nominal pressure	1 bar max.
Temperature of medium	100°C max.
Float	Hard-PU SR45, stainless steel VR50
Plug socket connector	DIN 43651 or 6 pol. + PE IP65 or serie M12 IP68
Switching current	Contact type 01+03 0,5A max. Contact type 02+04 1A max.
Switching potential	Contact type 01+03 10 W/VA max. 230V AC max. Contact type 02+04 60 W/VA max. 250V AC/DC max.
Operating voltage	12V ... 30V DC
Measuring range	4-20 mA
Temperature range	0-100°C
Thermal element	Pt100
Number of functions	max. 3 can be incorporated
Load	RB = $\frac{U-12V}{20mA}$
Mounting position	vertical ± 30°



GOLDAMMER
REGELUNGSTECHNIK GMBH