

## ELECTROHYDRAULIC BRAKING

SG2007/D, REV 0  
12/2002

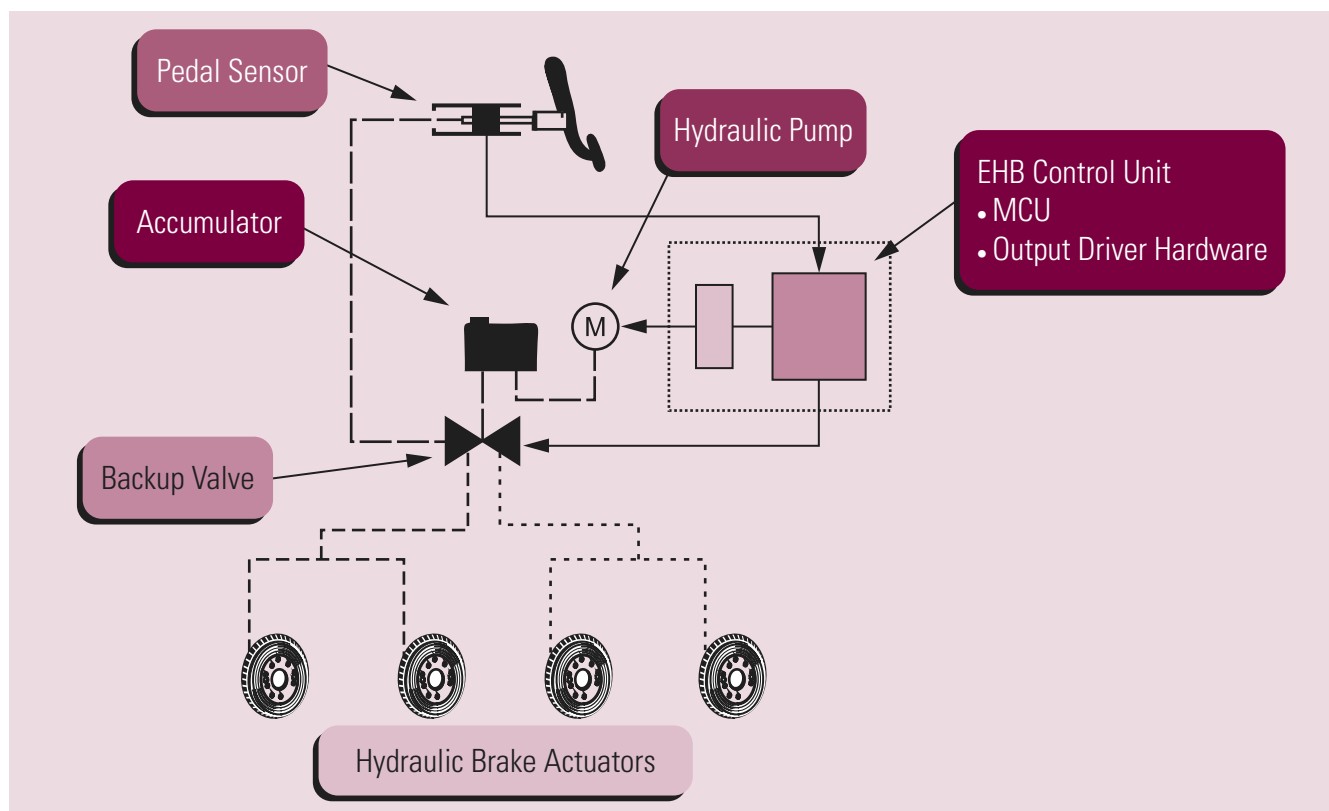
### KEY BENEFITS

- Reuses hydraulic system technology while incrementally building on the development of advanced electronic systems, such as electronic stability programs (ESP), traction control, and brake assist
- Uses software updates to simplify the calibration process by adjusting brake response and pedal feel
- Improves connectivity with other emerging systems, such as adaptive cruise control
- Removes the large vacuum servo to allow flexible installation
- Features an anti-lock braking system (ABS) without feedback from the pedal

### OVERVIEW

*Electrohydraulic braking (EHB) systems are designed to allow electronic control of vehicle braking while retaining a reduced hydraulic system. The hydraulic system functions as a reserve in the event of a failure in the electronic control.*

*The EHB control unit receives inputs from sensors connected to the brake pedal. In normal operation, a backup valve is closed and the controller activates the brakes of the wheel through an electric motor driven hydraulic pump. When the controller goes into a fail-safe mode, the backup valve is opened, which allows the brakes to be controlled through a conventional hydraulic circuit.*



**Figure 1. Electrohydraulic Braking Block Diagram**

## MOTOROLA ORDERING INFORMATION

Contact your Motorola sales representative for complete information about existing products and custom solutions.

Part Number	Product Highlights	Additional Information
MPC500	32-bit microcontrollers	<a href="http://www.motorola.com/semiconductors">www.motorola.com/semiconductors</a> <sup>NOTE</sup>
SMARTMOS	Integrated circuits	<a href="http://www.motorola.com/analog">www.motorola.com/analog</a>

NOTE: Search on the listed part number.

## DESIGN CHALLENGES

Electrohydraulic braking is based on existing ABS systems with the addition of several enhancements. The inclusion of analog electrohydraulic valves requires closed-loop, current-controlled pulse width modulation (PWM) outputs from the electronic control unit (ECU).

An EHB system is required to incorporate a fail-safe state in the event of a fault occurring. To correctly initiate the fail-safe state, the system relies on its electronic components to provide a high level of operational fault coverage.

## MOTOROLA SOLUTION

An EHB system requires mid-range performance MPC500 microcontrollers for system control with SMARTMOS companion chips for functions such as load driving, sensor interfacing, voltage regulation, and system watchdog operation.

Motorola has gained experience developing many of the specific aspects required for the implementation of an EHB system. Because of its extensive experience in the development of fail-safe microcontrollers, braking-specific modules such as the wheel speed timer, and a software center including drivers, tools, and operating systems, Motorola has proven its ability to develop the right solutions in collaboration with its customers.

# Freescale Semiconductor, Inc.

## DEVELOPMENT TOOLS

Vendor	MPC555	MPC561	MPC562	MPC563	MPC564	MPC565	MPC566	TPU
<b>Metrowerks</b>								
CodeWarrior for Embedded PowerPC ISA	•	•	•	•	•	•	•	
CodeWarrior for OSEK RTOS	•	•	•	•	•	•	•	
CodeWarrior Development Systems	•					•		
OSEKturbo (RTOS)	•	•		•		•		
TPU Low-Level Driver Library								•
Flash Programming — CodeWarrior for Embedded PowerPC ISA	•			•	•	•	•	
Flash Programming — CodeWarrior for OSEK RTOS	•			•	•	•	•	
<b>Wind River Systems</b>								
BDM Debugger — SingleStep	•	•		•		•		
BDM Debugger — SingleStep with Vision	•	•		•		•		
Flash Programming — SingleStep	•			•		•		
BDM Debugger — VisionCLICK	•	•		•		•		
Nexus Debugger — VisionCLICK		•		•		•		
Nexus Debugger — SingleStep with Vision		•		•		•		
Flash Programming — VisionCLICK	•			•		•		
Compiler — DiabData	•	•	•	•	•	•	•	
MATRIX	•	•		•		•		
Simulator — SingleStep	•	•	•	•	•	•	•	
<b>Lauterbach</b>								
BDM Debugger Trace32	•	•	•	•	•	•	•	•
Nexus Debugger Trace32		•	•	•	•	•	•	•
Code Trace (with Bus access)	•	•	•	•	•	•	•	
Code Trace (Nexus)	•	•	•	•	•	•	•	
<b>Axiom Manufacturing</b>								
Low-Cost Evaluation Board	•	•						
Mid-Range Evaluation Board	•	•						
Full-Feature Evaluation Board	•	•	•	•	•	•	•	
<b>Ashling Microsystems</b>								
BDM Debugger — Opella, Genia, and Vitra	•	•	•	•	•	•	•	
Nexus Debugger — Vitra (w/trace)		•		•		•		•
Nexus Debugger — Opella, Genia		•		•		•		
<b>Green Hills Software</b>								
IDE, Debugger — Multi	•	•		•		•		
Compiler — C/C++/EC++	•	•		•		•		
<b>P&amp;E Microcomputer Systems</b>								
Low-Cost Debugger	•	•		•		•		
Flash Programming Tools	•			•		•		
<b>GNU</b>								
Compiler/Debugger	•	•		•		•		
<b>ASH WARE</b>								
TPU Simulator								•

# Freescale Semiconductor, Inc.

## DEVELOPMENT TOOLS (continued)

Vendor	MPC555	MPC561	MPC562	MPC563	MPC564	MPC565	MPC566	TPU
<b>ETAS</b>								
ErCOSEK	•	•		•		•		
Calibration Tools (ETK)	•	•		•		•		
Calibration Tools (ETK) Nexus	•	•		•		•		
<b>dSPACE</b>								
TargetLink	•	•		•		•		
<b>dli</b>								
Logic Analyzer	•	•		•		•		
<b>Agilent Technologies</b>								
Logic Analyzer	•	•		•		•		
Inverse Assembler, Source Correlation	•	•		•		•		
Emulation Probe (BDV)	•	•		•		•		
<b>Tektronix</b>								
Logic Analyzer	•	•		•		•		
<b>Abatron AG</b>								
BDM Support	•	•		•		•		
<b>Accelerated Technology</b>								
Nucleus (RTOS)	•	•		•		•		

## THIRD PARTY SUPPORT

Vendor	Contact Information
Metrowerks	800-377-5416 (www.metrowerks.com)
Axiom Manufacturing	972-926-9303 (www.axman.com)
Wind River Systems	800-872-4977 (www.windriver.com)
Green Hills Software	805-965-6044 (www.ghs.com)
Lauterbach	508-303-6812 (www.lauterbach.com)
Accelerated Technology	800-468-6853 (www.acceleratedtechnology.com)
Ashling Microsystems	408-732-6490 (www.ashling.com)
ASH WARE	503-533-0271 (www.ashware.com)
GNU	617-542-5942 (www.gnu.org)
ETAS	888-382-7462(www.etasinc.com)
dSPACE	248-567-1300 (www.dspace.com)
P&E Microcomputer Systems	617-353-9206 (www.pemicro.com)

# Freescale Semiconductor, Inc.

## RELATED INFORMATION

For inquiries about Motorola products, contact the Technical Information Center at 800-521-6247, or visit us online at [www.motorola.com/semiconductors](http://www.motorola.com/semiconductors).

### Online Topics

MPC500

Analog and Mixed Signal

32-Bit Development Tools

### Related Product

Product Number	Product Name	Contact Information
MPXV6115V	High temperature accuracy integrated silicon pressure sensor — small outline package	<a href="http://www.motorola.com/semiconductors">www.motorola.com/semiconductors</a> <sup>NOTE</sup>

NOTE: Search on the product number listed.

# Freescale Semiconductor, Inc.

## HOW TO REACH US:

### USA/EUROPE/LOCATIONS NOT LISTED:

Motorola Literature Distribution  
P.O. Box 5405  
Denver, Colorado 80217  
1-303-675-2140  
1-800-441-2447

### JAPAN:

Motorola Japan Ltd.  
SPS, Technical Information Center  
3-20-1, Minami-Azabu  
Minato-ku  
Tokyo 106-8573, Japan  
81-3-3440-3569

### ASIA/PACIFIC:

Motorola Semiconductors H.K. Ltd.  
Silicon Harbour Centre  
2 Dai King Street  
Tai Po Industrial Estate  
Tai Po, N.T. Hong Kong  
852-26668334

### TECHNICAL INFORMATION CENTER:

1-800-521-6274

### HOME PAGE:

<http://www.motorola.com/semiconductors>



Motorola reserves the right to make changes without further notice to any products herein. Motorola makes no warranty, representation or guarantee regarding the suitability of its products for any particular purpose, nor does Motorola assume any liability arising out of the application or use of any product or circuit, and specifically disclaims any and all liability, including without limitation consequential or incidental damages. "Typical" parameters can and do vary in different applications and actual performance may vary over time. All operating parameters, including "Typicals", must be validated for each customer application by customer's technical experts. Motorola does not convey any license under its patent rights nor the rights of others. Motorola products are not designed, intended, or authorized for use as components in systems intended for surgical implant into the body, or other applications intended to support or sustain life, or for any other application in which the failure of the Motorola product could create a situation where personal injury or death may occur. Should Buyer purchase or use Motorola products for any such unintended or unauthorized application, Buyer shall indemnify and hold Motorola and its officers, employees, subsidiaries, affiliates, and distributors harmless against all claims, costs, damages, and expenses, and reasonable attorney fees arising out of, directly or indirectly, any claim of personal injury or death associated with such unintended or unauthorized use, even if such claim alleges that Motorola was negligent regarding the design or manufacture of the part. Motorola and the Stylized M Logo are registered trademarks of Motorola, Inc. Motorola, Inc. is an Equal Opportunity/Affirmative Action Employer.

MOTOROLA and the Stylized M Logo are registered in the US Patent & Trademark Office. All other product or service names are the property of their respective owners.

© Motorola, Inc. 2002

SG2007/D, REV 0

**For More Information On This Product,  
Go to: [www.freescale.com](http://www.freescale.com)**

December 2002