



# SmartBoard™ Workflow Suite

Manufactured by NexPress, A Kodak Company



PRODUCTION  
SYSTEMS



## THE FRONT-END SOLUTION TO MAKING WORK FLOW

Maximize the capabilities of your Canon imageRUNNER® 110/Pro Series Networked Production Systems with SmartBoard.™ It's the total workflow solution that allows you to edit, manage, manipulate, store, and move documents more efficiently than ever before. With SmartBoard, you can increase output of high-quality, mission-critical jobs now, while positioning your business for sustained growth in the future.

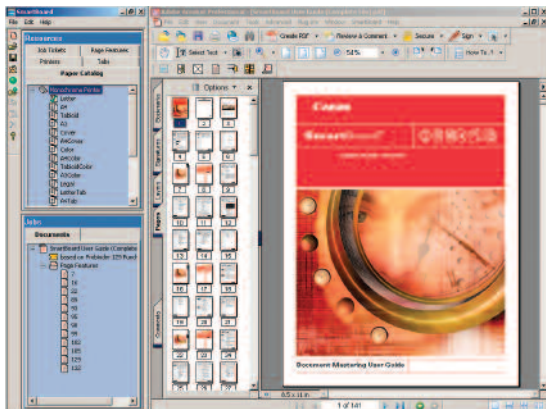
### Scalable Open Architecture Provides Greater Document Control and Flexibility

The SmartBoard software is built upon the industry-standard Adobe® Acrobat® software platform and employs Portable Document Format (PDF)-based workflow. The growing dominance of PDF in office and graphics environments makes this format an excellent choice for both color and black-and-white job assembly. The benefits of PDF documents include greater file integrity, more compact size, and increased portability.

Compatible with a wide range of input sources, SmartBoard accepts scanned originals and electronic documents on disk and CD or via network. It also supports a variety of popular applications, such as Microsoft® Office and QuarkXPress®, as well as PostScript® Level 3, TIFF, and JPEG, and quickly converts files to PDF format, faithful to the originals in every detail. With SmartBoard, it's easy to create fully annotated PDF files—ready for editing, imposing, and printing—with a minimum of time and labor.

### Maximize Throughput, Preflight to Production

The ideal complement to your Canon imageRUNNER 110/Pro Networked Production Systems, SmartBoard streamlines your workflow, reduces turnaround time, and raises productivity to new highs. Enjoy a new level of preflighting efficiency for document assembly, viewing, editing, and proofing. The easy-to-use, intuitive interface uses familiar icons with simple drag-and-drop features, adding point-and-click convenience to every function. The workflow is fast, simple, and intuitive.







### Functionality for the Way You Want to Work

SmartBoard software is designed to make your most challenging document scanning, storage, and assembly jobs easy and headache-free. It comes standard with an impressive array of features, including:

- **Icon-based Operation** – All SmartBoard screens have easy-to-understand icons, and operate using familiar point-and-click and drag-and-drop mouse-based techniques.
- **Variety of Input Sources** – Documents can be input from a broad range of sources, including hard-copy originals, native application formats, such as Microsoft Office, as well as TIFF and PostScript files.
- **Easy Job Assembly** – Easily cut, copy, and paste pages between documents and rearrange pages. Multiple file types can be combined into a single document.
- **Page-level Editing** – Object area editing, masking, and erasing allow unwanted information and stray page marks to be removed quickly and easily from scanned documents. All editing features can be done with the click of a mouse and can be viewed on screen before printing, thus reducing the occurrence of errors.
- **Annotations** – Add page numbers, stamps, watermarks, headers and footers, and more to individual pages or several pages at a time.
- **Tab Creation** – Ability to create both cut and bleed tabs. Labels can be multiline and automatically created from PDF bookmarks. The operator can send unused tabs to the top exit of the printer.
- **Job Ticketing** – Using SmartBoard, normal prepress time can be reduced by as much as 50% through the use of predefined job ticket templates. Users can create custom job tickets for reuse; create, store, and retrieve document-level job tickets for easy reprints; and, view and customize job ticket settings as needed.
- **File Portability and Convenience** – Files can be shared among customers and print providers for greater collaboration on job setup and proofing.
- **B/W and Color Synergy** – Edit and store both black-and-white and color pages within the same document.
- **Scanning Versatility** – Supports TWAIN-compliant interface, with full support for the Canon imageSCANNER 65, as well as other scanners.

For additional functionality, including impositioning and stamping, choose the SmartBoard Suite for your document production needs. The SmartBoard Suite comes with all the features mentioned above, plus two additional plug-ins—Quite Imposing Plus and StampPDF.™

### Full Document Control, From File Creation to Output

SmartBoard is an easy way to deliver your most complex documents with speed and accuracy, all the way through to production. You'll find it's everything your business needs, and then some, to prevail in today's competitive environment.



## SmartBoard™ Workflow Suite

### Product Configurations

SmartBoard 3.0 Suite includes:

- Adobe Acrobat 6.0 Professional
- Quite Imposing Plus 1.6
- StampPDF 2.7
- USB License Dongle

SmartBoard 3.0 includes:

- Adobe Acrobat 6.0 Professional
- USB License Dongle



### Minimum System Requirements (PC not included)

- Microsoft Windows® 2000 Professional SP3 or Windows XP Professional SP1
- Single Pentium® III, 733MHz Processor with 133MHz FSB or higher
- 256MB RAM or higher
- 10/100-Base TX Ethernet Adapter
- CD-ROM or DVD drive
- 9.1GB or higher Hard Drive
- Keyboard and mouse or compatible pointing device
- Display and Graphics Adapter—1024 x 768 monitor resolution with 16-bit color or greater (24-bit screen display recommended)
- USB port—an available USB port is needed for license dongle
- Adaptec SCSI Card 29160 is required for scanner connection
- Print Production Software v5.x or later

**Canon**  
*image*ANYWARE

Kodak and SmartBoard are trademarks of Eastman Kodak Company. Microsoft and Windows are registered trademarks of Microsoft Corporation in the United States and/or other countries. Adobe, Acrobat, and PostScript are either registered trademarks or trademarks of Adobe Systems Incorporated in the United States and/or other countries. QuarkXPress is a trademark of Quark, Inc. and all applicable affiliated companies, Reg. U.S. Pat. & Tm. Off. and in many other countries. Pentium is a registered trademark of Intel Corporation. Adaptec is a trademark of Adaptec, Inc., which may be registered in some jurisdictions. StampPDF is a trademark of Appligent, Inc. CANON and IMAGERUNNER are registered trademarks of Canon Inc. in the United States and may also be registered trademarks or trademarks in other countries. IMAGEANYWARE is a trademark of Canon. All referenced product names and other marks are trademarks of their respective owners.

Specifications subject to change without notice.  
©2006 Canon U.S.A., Inc. All rights reserved.

1-800-OK-CANON  
[www.usa.canon.com](http://www.usa.canon.com)

Canon U.S.A., Inc.  
One Canon Plaza  
Lake Success, NY 11042