

Brother StartCard

If you cannot solve a problem:

Refer to **Frequently Asked Questions (FAQs)** on Brother World Wide Web;

URL: <http://www.brother.com>

Call Brother Customer Service at;

USA: 1-800-284-4329

From within Canada: 1-800-853-6660

From within Montreal: 1-514-685-6464

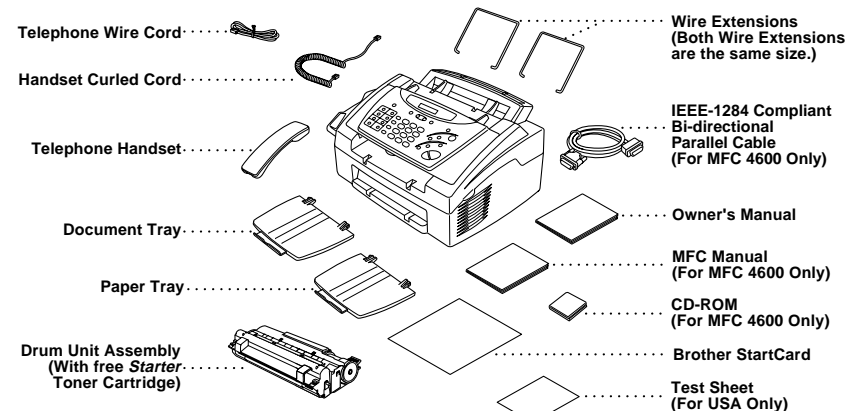
THANK YOU!

**CONGRATULATIONS ON PURCHASING THE ULTIMATE BROTHER MACHINE.
WE ARE SURE YOU WILL BE THRILLED WITH THE CONVENIENT WAY YOUR
NEW MACHINE PERFORMS SO MANY TASKS WITH DAZZLING RESULTS!**

Follow these simple instructions in numerical order.

For more details, press **[Help]** or **[Copy/Help]** on your machine or see your Operations Manual.

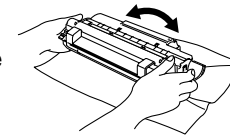
1 Packing List



❗ Keep the packing materials for possible future transport. If you do not pack the machine properly, it may void your warranty.

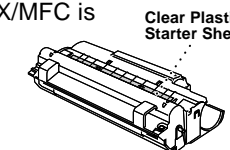
2 Install the Drum Unit

A. Unpack the drum unit assembly, and gently rock it from side to side five or six times to distribute the toner evenly.

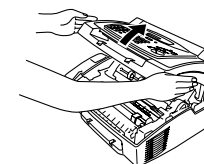


❗ To prevent damage to the drum, do not expose it to light for longer than a few minutes.

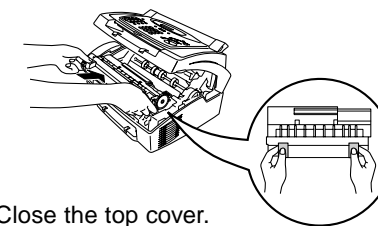
❗ Do NOT remove the clear plastic starter sheet—this will be ejected while the FAX/MFC is warming up.



B. Open the top cover of the machine.

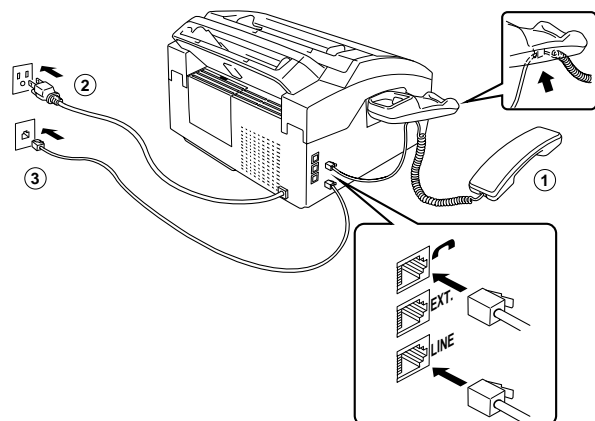


C. Holding the drum unit by its handles, insert it into the FAX/MFC.

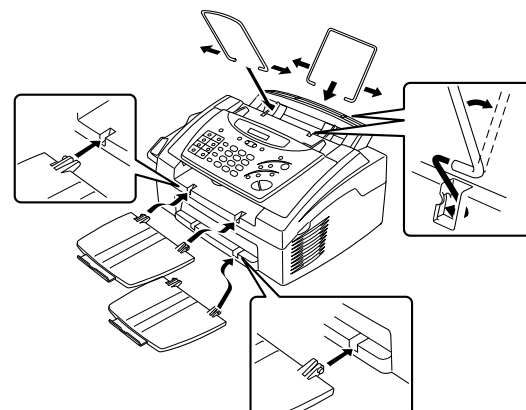


D. Close the top cover.

3 Install Handset, Power Cord and Phone Line

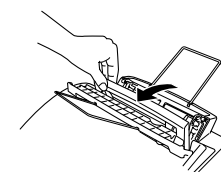


4 Attach Wire Extensions and Document/Paper Trays

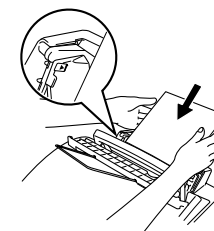


5 Load Paper

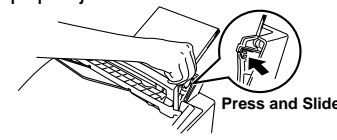
A. Open the multi-purpose sheet feeder cover.



B. Fan the paper well. Load the paper, making sure that the print side is toward the fax machine and the paper level is stacked below the paper mark.

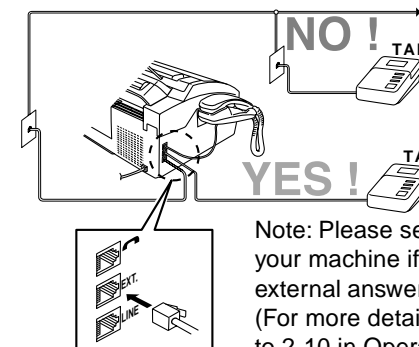


C. Adjust the guides to fit the paper, to help prevent paper jams.



Press and Slide.

6 If you are sharing one phone line with an external telephone answering device, connect it now to the external jack.



Note: Please select "TAD" on your machine if you have an external answering machine. (For more details, see page 2-9 to 2-10 in Operations Manual.)

7 Select an Answer Mode

Choose the mode that best suits your needs by pressing **[Receive Mode]** repeatedly until the screen displays the setting you want to use.

MANUAL

You must answer every call yourself.

The Brother machine must be started manually to receive.

FAX ONLY

For use with a dedicated fax line.

Every call is answered as a fax.

FAX/TEL

For receiving fax and voice calls on one line.

The MFC answers every call and receives a fax or double rings for you to pick up a voice call.

TAD: ANSWER MACH.

For use with an answering device.

The TAD answers every call and stores voice messages.

Fax messages are printed.

Make sure that TAD is connected to external jack.

8 Set Date and Time

A. For the FAX, press **[Function]**, **[1]**, **[1]**.

For the MFC, press **[Function]**, **[1]**, **[1]**, **[1]**.

ENTER YEAR:XX

B. Enter the last two digits of the year and press **[Set]**.

ENTER MONTH:XX

C. Enter two digits for the month and press **[Set]**.

ENTER DAY:XX

D. Enter two digits for the day and press **[Set]**.

ENTER TIME:XX:XX

E. Enter the time in 24-hour format and press **[Set]**.

F. Press **[Stop]** to exit.

9 Set Station ID

A. For the FAX, press **[Function]**, **[1]**, **[2]**.

For the MFC, press **[Function]**, **[1]**, **[1]**, **[2]**.

FAX:

B. Enter your fax number, then press **[Set]**.

TEL:

C. Enter your telephone number, then press **[Set]**.

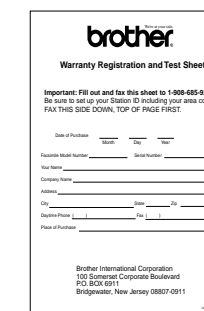
NAME:

D. Enter your name using the dial pad and the chart below, then press **[Set]**. Use the right arrow to create spaces.

Key	once	twice	three times	four times	five times
<input type="checkbox"/> A	A	B	C	2	A
<input type="checkbox"/> D	D	E	F	3	D
<input type="checkbox"/> G	G	H	I	4	G
<input type="checkbox"/> J	J	K	L	5	J
<input type="checkbox"/> M	M	N	O	6	M
<input type="checkbox"/> P	P	Q	R	7	P
<input type="checkbox"/> T	T	U	V	8	T
<input type="checkbox"/> W	W	X	Y	9	W

For more details, see page 4-3 in Operations Manual.

10 For the USA, complete the Warranty Registration and Test Sheet...



...and fax it to Brother
at: 1-908-685-9283

That's all you need to start using your Brother machine.