

Original instructions



BOSCH

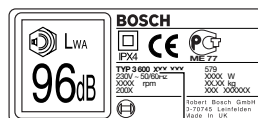
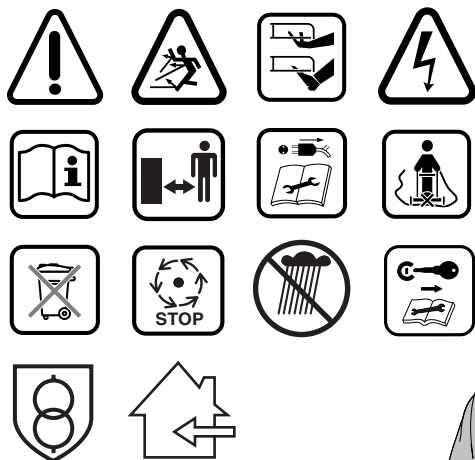
Rotak 37 LI Rotak 43 LI

English

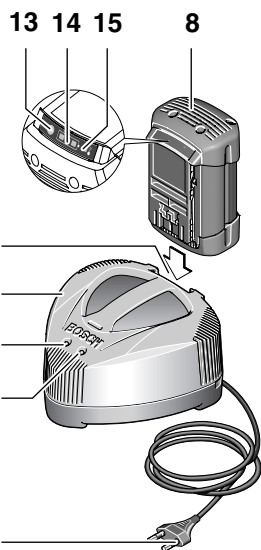


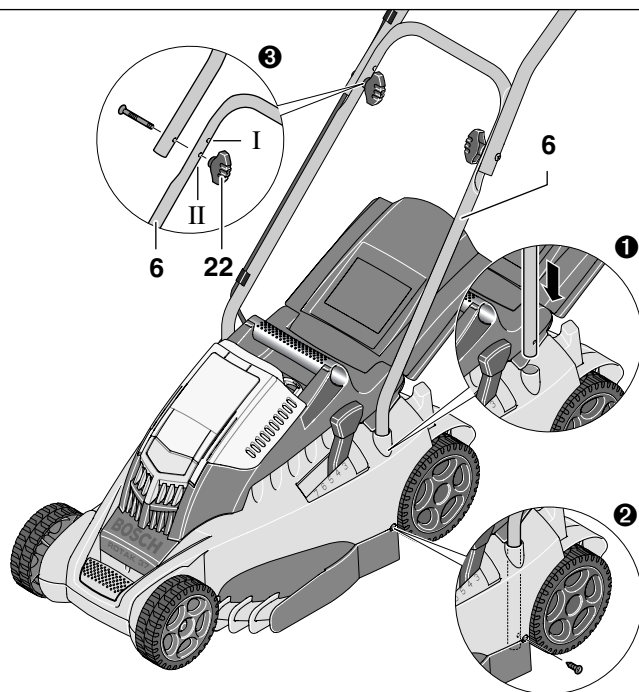
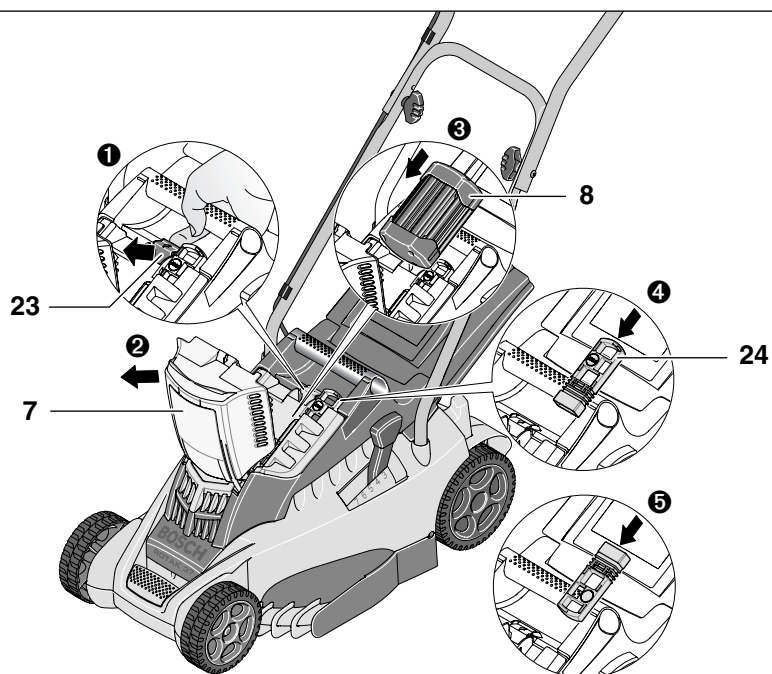
www.bosch-pt.com

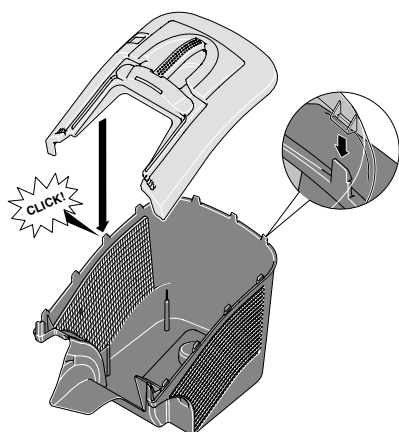
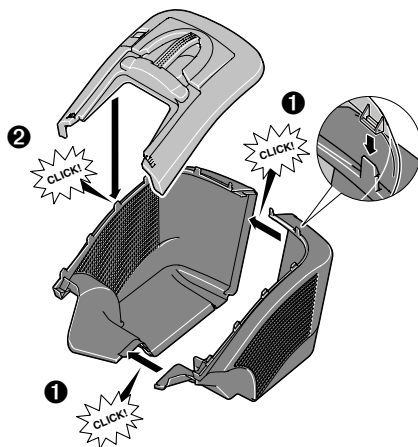
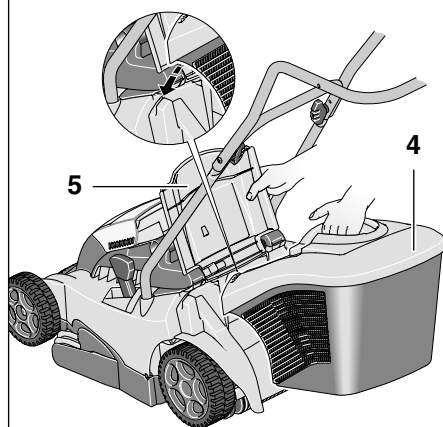
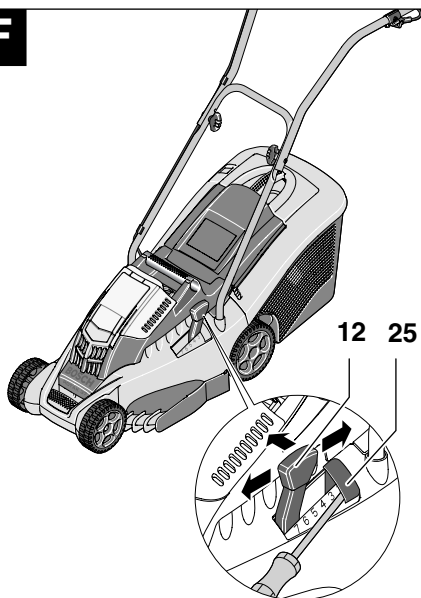


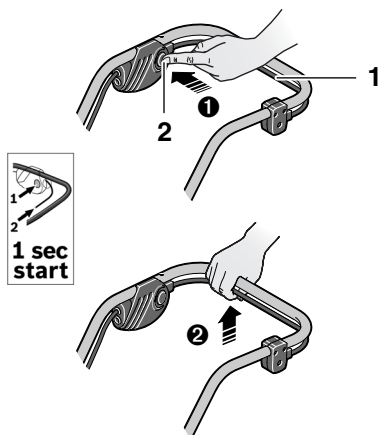
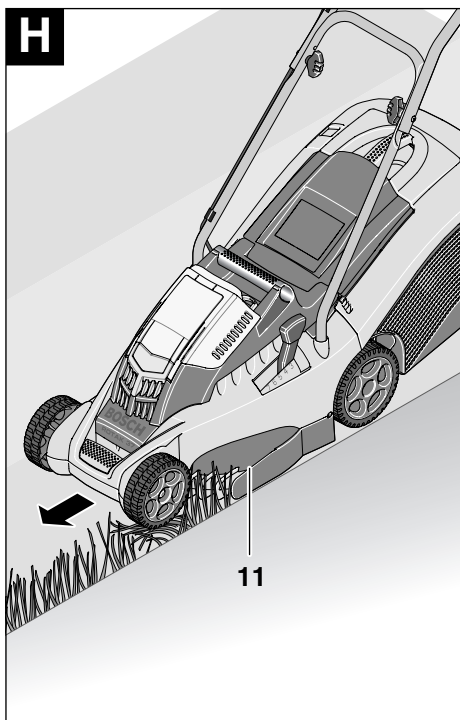
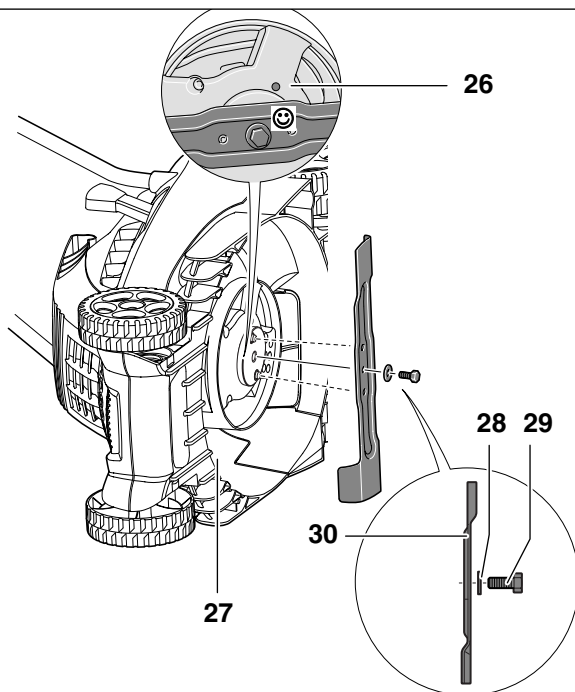


21



A**B**

C**Rotak 37 LI****D****Rotak 43 LI****E****F**

G**H****I**



Safety Notes

Warning! Read these instructions carefully, be familiar with the controls and the proper use of the lawnmower. Please keep the instructions safe for later use.

Explanation of symbols on the lawnmower



General hazard safety alert.



Read instruction manual.



Beware of thrown or flying objects to bystanders.



Keep bystanders a safe distance away from the machine.



Sharp blade(s). Beware of severing toes or fingers.



Switch off and remove isolator key before adjusting, cleaning and before leaving the lawnmower unattended for any period.



Not applicable.



Wait until all machine components have completely stopped before touching them. The blades continue to rotate after the machine is switched off, a rotating blade can cause injury.



Do not mow in the rain or leave the lawnmower outdoors whilst it is raining.



Beware electric shock hazard.



Keep supply flexible cord away from cutting means.



Only use the battery charger indoors.



Battery charger contains a safety transformer.

■ Never allow children or people unfamiliar with these instructions to use the lawnmower. Local regulations may restrict the age of the operator.

■ This appliance is not intended for use by persons (including children) with reduced physical, sensory or mental capabilities, or lack of experience and knowledge, unless they have been given supervision or instruction concerning use of the appliance by a person responsible for their safety.

Children should be supervised to ensure that they do not play with the appliance.

■ Never mow while people, especially children or pets, are nearby.

■ The operator or user is responsible for accidents or hazards occurring to other people or their property.

■ Do not operate the lawnmower when barefoot or wearing open sandals, always wear substantial footwear and long trousers.

■ Thoroughly inspect the area where the lawnmower is to be used and remove all stones, sticks, wires, bones and other foreign objects.

■ Before using, always visually inspect to see that the blades, blade bolts and cutter assembly are not worn or damaged. Replace worn or damaged blades and bolts in sets to preserve balance.

■ Mow only in daylight or in good artificial light.

■ Avoid operating the lawnmower in wet grass, where feasible.

■ Walk, never run.

■ Never operate the appliance with defective guards or shields, or without safety devices, for example deflectors and/or grass catchers in place.

■ Mowing on banks can be dangerous:

– Do not mow excessively steep slopes.

– Always be sure of your footing on slopes or wet grass.

– Mow across the face of slopes – never up and down.

– Exercise extreme caution when changing direction on slopes.

■ Use extreme caution when stepping back or pulling the lawnmower towards you.

■ Never mow by pulling the mower towards you.

■ Stop the blades if the lawnmower has to be tilted for transportation when crossing surfaces other than grass and when transporting the lawnmower to and from the area to be mowed.

■ Do not tilt the machine when starting or switching on the motor, except if the machine has to be tilted for starting in long grass. In this case, do not tilt it more than absolutely necessary and tilt only the part which is away from the operator. Always ensure that both hands are in the operating position before returning the machine to the ground.

■ Switch on the lawnmower according to instructions and with feet well away from the blades.

- Do not put hands or feet near or under rotating parts. Keep clear of discharge opening at all times.
- Never pick up or carry the lawnmower while the motor is running.

Remove the isolator key:

- whenever you leave the machine
- before clearing a blockage
- before checking, cleaning or working on the lawnmower
- after striking a foreign object. Inspect the lawnmower for damage and make repairs as necessary
- if the lawnmower starts to vibrate abnormally (check immediately).
- Keep all nuts, bolts and screws tight to be sure that the lawnmower is in safe working condition.
- Check the grass catcher frequently for wear or deterioration.
- Replace worn or damaged parts for safety.
- Ensure replacement cutting means of the right type are used. Ensure replacement parts fitted are Bosch approved.
- **Ensure the switch is in the off position before inserting battery pack.** Inserting the battery pack into machines that have the switch on invites accidents.
- **Protect the battery charger from rain and moisture.** The penetration of water in a battery charger increases the risk of electric shock.
- **Recharge only with the charger specified by the manufacturer.** A charger that is suitable for one type of battery pack may create a risk of fire when used with another battery pack.
- **Do not charge other batteries.** The battery charger is suitable only for charging Bosch lithium ion batteries within the listed voltage range. Otherwise there is danger, fire and explosion.
- **Keep the battery charger clean.** Contamination may cause the danger of electric shock.
- **Check the battery charger, cable and plug each time before using. Do not use the battery charger when defects are detected. Do not open the battery charger yourself and have it repaired only by qualified personnel using original spare parts.** Damaged battery chargers, cables and plugs increase the risk of electric shock.
- **Do not operate the battery charger on easily inflammable surfaces (e. g. paper, textiles, etc.) or in combustible environments.** There is danger of fire due to the heating of the battery charger during charging.

- **Use Product only with specifically designated battery packs.** Use of any other battery packs may create a risk of injury and fire.
- **When battery pack is not in use, keep it away from other metal objects like paper clips, coins, keys, nails, screws, or other small metal objects that can make a connection from one terminal to another.** Shorting the battery terminals together may cause burns or a fire.
- **Under abusive conditions, liquid may be ejected from the battery; avoid contact. If contact accidentally occurs, flush with water. If liquid contacts eyes, additionally seek medical help.** Liquid ejected from the battery may cause irritation or burns.
- **Do not open the battery yourself.** There is danger of a short circuit.
- **Protect the battery against heat, e.g., including against continuous sun irradiation and fire.** There is a danger of explosion.
- **Do not short-circuit the battery.** There is a danger of explosion.
- **In case of damage and improper use of the battery, vapours may be emitted.** In case of complaints, provide for fresh air and consult a physician. The vapours can irritate the respiratory system.
- Protect the battery against moisture and water.
- Store the battery only within a temperature range from 0 °C to 45 °C. As an example, do not leave the battery in your car in the summer.
- Clean the venting slots of the battery occasionally using a soft, clean and dry brush.

Product Specification

Lawnmower		Rotak 37 LI	Rotak 43 LI
Part number (typ) (typ)		3 600 H81 ...	3 600 H81 ...
Blade width	[cm]	37	43
Height of cut	[mm]	35–70	35–70
Grassbox capacity	[l]	40	50
Weight (max.)	[kg]	13.9	14.7
Serial Number		See serial No 21 (rating plate) on machine.	
Battery type		Li-Ion	Li-Ion
Part number (typ)		2 607 336 107	2 607 336 107
Battery. Nominal Voltage	[V]	36	36
Charging time (empty battery)	[min]	60	60
Charger		AL 3640 CV Professional	AL 3640 CV Professional
Part number (typ)		2 607 225 ...	2 607 225 ...
Nominal Voltage	[V]	36	36
Charging current	[A]	4.0	4.0
Allowable charging temperature range	[°C]	0–45	0–45
Weight according to EPTA-Procedure 01/2003	[kg]	1.0	1.0
Protection class		□ / II	□ / II

Intended Use

This product is intended for domestic lawn mowing.

Introduction

This manual gives instructions on the correct assembly and safe use of your machine. It is important that you read these instructions carefully.

When fully assembled the machine weighs approximately between 13.9 and 14.7 kg. If necessary, obtain assistance to remove from packaging.

Take care when carrying the mower to the lawn, as the blades are sharp.

Delivered Items

Carefully remove the machine from its packaging and check that you have all the following items:

- Lawnmower with handle assembly
- 1 Handle bottom
- 2 Bolts
- 2 Wing nuts
- 2 Screws
- 2 Grassbox parts (Rotak 37 LI)
- 3 Grassbox parts (Rotak 43 LI)
- 2 Cable clips
- Operating instructions
- Charger

- Isolator key
- Battery (s)*

When parts are missing or damaged, please contact your dealer.

*Product specific

Operating Controls

- 1 Switch lever
- 2 Safety button
- 3 Handle top
- 4 Grassbox
- 5 Deflector guard
- 6 Handle bottom
- 7 Battery cover
- 8 Rechargeable battery
- 9 Ventilation slots
- 10 Wheels
- 11 Grass comb
- 12 Height of cut lever
- 13 Button for battery charged state indication
- 14 Battery charged state indicator
- 15 Indicator for the temperature monitoring
- 16 Charging compartment
- 17 Battery charger
- 18 Red charge control LED
- 19 Green charge control LED
- 20 Mains plug**
- 21 Serial Number

- 22 Wing nut
- 23 Battery cover latch
- 24 Isolator Key

**Country specific

Not all of the accessories illustrated or described are included as standard delivery.



For Your Safety

Warning! Switch off, remove the isolator key and the battery before adjusting, cleaning or if cable is cut, damaged or entangled.

The blades continue to rotate for a few seconds after the machine is switched off.

Caution – do not touch rotating blades.

Charging the Battery

Observe correct mains voltage: The voltage of the power source must agree with the voltage specified on the nameplate of the unit. Equipment marked with 230 V can also be connected to 220 V or 240 V.

Use only the charging unit supplied. Only this charging unit is matched to the lithium-ion battery used in the product.

The battery is equipped with temperature monitoring that allows charging only in the temperature range between 0 °C and 45 °C. In this manner, a high battery service life is achieved.

The battery is delivered with a partial charge. Before using the product for the first time, fully charge the battery. Independent of the charged state, the lithium ion battery can be charged at anytime without shortening its service life (no memory effect). Interrupting the charging procedure will not cause damage to the battery.

The lithium-ion battery is protected against deep discharging when used in the power tool. When the battery is discharged the power tool is switched off by a protective circuit and the tool no longer operates.

Do not continue to press the on/off switch after an automatic switch off of the power tool. The battery can be damaged.

Charging Procedure

The charging procedure starts as soon as the mains plug is plugged into the socket and the battery **8** is inserted into the charging compartment **16**.

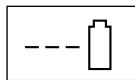
Due to the intelligent charging method, the charging condition of the battery is automatically detected and the battery is charged with the optimum charging current, depending on battery temperature and voltage.

This gives longer life to the battery and always leaves it fully charged when kept in the charger for storage.

Meaning of the Indication Elements

Control of the charging procedure is indicated via the charge control LEDs **18** and **19**:

Rapid-charging Procedure



The rapid-charging procedure is indicated by **flashing** of the **green** charge control LED **19**.

During the charging procedure, the 3 green battery LEDs light up one after the other and briefly go out. The battery is fully charged when the 3 green LEDs light up continuously. Approx. 5 minutes after the battery has been fully charged, the 3 green LEDs go out again.



The rapid-charging procedure is possible only when the temperature of the battery is between 0 °C and 45 °C.

Battery Charged



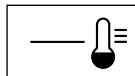
Continuous lighting of the **green** charge control LED **19** signals that the battery is fully charged.

Additionally, a signal tone sounds for approx. 2 seconds, which acoustically indicates that the battery is fully charged.

Afterwards the battery can be removed for immediate use.

With no battery inserted, continuous lighting of the green charge control LED **19** indicates that the mains plug is plugged into the socket and that the battery charger is ready for operation.

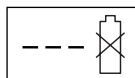
Battery Temperature below 0 °C and above 45 °C



Continuous lighting of the **red** LED **18** indicates that the battery temperature is not within the rapid-charging temperature range of 0 °C – 45 °C. As soon as the allowable temperature range is reached, the battery charger automatically switches to rapid charging.

When the battery is not within the allowable temperature range, the red battery LED lights up when inserting the battery into the battery charger.

No Charging Procedure Possible due to Defective Battery



If a different malfunction of the charging procedure is present, this will be indicated through **flashing** of the **red** charge control LED **18**.

The charging procedure can not be started and the battery cannot be charged. (see for advice Fault Finding)

Charging Advice

- With continuous or several repetitive charging cycles without interruption, the charger can warm up. This is not meaningful and does not indicate a technical defect of the unit.
- A significantly reduced working period after charging indicates that the battery must be replaced.

Battery Cooling (Active Air Cooling)

The fan control integrated in the battery charger controls the temperature of the inserted battery. When the battery temperature is above 30 °C, a fan cools down the battery to the optimal charging temperature. The switched-on fan produces a fan noise.

The battery temperature is within the optimal charging temperature range when the fan is not running, or the fan may possibly be defective. In this case, the charging time of the battery extends.

Assembly



Do not connect the battery and/or the isolator key before product is completely assembled.

A Handle assembly

- ① Insert the handle bottom **6** into the holes provided and
- ② secure with the screws.

Note: The handle top **3** is height adjustable. Fix handles in desired position **I** or **II**.

- ③ Attach the handle top **3** with the bolts and wing nuts **22** to the handle bottom **6**.

Note: Ensure that the cable clips supplied are used to fix the cable to the handle.

Fitting/Removing Battery

B Fitting

- ① Lift the battery cover latch **23**.
 - ② Lift up battery cover **7**.
 - ③ Fit battery **8**, when correctly fitted a „click“ will be heard.
 - ④ Fit the isolator key **24** as shown.
 - ⑤ If the mower is not going to be used immediately fit isolator key **24** as shown in the storage position.
- Close battery cover **7**.

Removing Battery

Lift the battery cover latch **23** and lift up battery cover **7**.

Remove isolator key **24**, refit in storage position.

Lift the battery cover latch **23**.

Remove the battery **8**.

Snap together the grassbox

C Rotak 37 LI:

Snap the grassbox top on the grassbox bottom by pushing all the “snap fits” together around the edges starting at rear and working towards the front.

D Rotak 43 LI:

① Snap the grassbox bottom halves together by pushing all the “snap fits” together around the edges starting at rear and working towards the front.

② Snap together both top and bottom half of the grassbox.

Ensure the cables are not trapped when folding/unfolding top handles. **Do not drop the handles.**

E Grassbox

Fitting

Lift the deflector guard **5** and hold up, fit the grassbox **4**.

Removing/Emptying

Lift the deflector guard **5** and hold up. Remove grassbox **4**.

For non grass collection the mower can be used without the grassbox **4** in position, with the deflector guard **5** in the down position.

Adjusting the Cutting Height



Stop, release switch lever and wait until the motor stops before adjusting height. The blades continue to rotate after the machine is switched off, a rotating blade can cause injury.

Caution – do not touch rotating blades.

For the first cutting of the season, a high cutting adjustment should be selected.

F The lawnmower can be set to 7 cutting heights between 35 mm and 70 mm. For this purpose, press the height of cut lever **12** inwards then lift or push down the mower until required height is selected.

The lawnmower may be used to cut down to 20 mm by removing the blanking plate **25** as shown.



Using the height of cut between 20 – 30 mm will further shorten the battery duration.

G Starting and Stopping



The blade continues to rotate for a few seconds after the machine is switched off. Allow the motor/blade to stop rotating before switching "on" again.

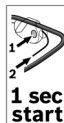
Do not rapidly switch off and on.



To aid starting tilt mower to side.

Fit the isolator key **24**.

Starting:



1 Press and hold the safety button **2**.

2 Squeeze the switch lever **1** towards the handle.

1 sec start

Release the safety button **2**.

Note: There is a short delay in the motor starting after engaging the switch lever.

Stopping:

Release the switch lever **1**.

If the mower is not going to be used immediately fit isolator key **24** as shown in the storage position.

The mower is fitted with a blade brake. This safety feature stops the blade from rotating in a few seconds.

Mowing



When mowing **do not allow the motor to labour** particularly in heavy conditions. When the motor labours the speed of the motor drops and you will hear a change in the motor sound, when this occurs stop mowing, release the switch lever and **raise the height of cut**. Failure to do so will reduce area of cut and could damage the product or battery.

Protect the battery from heat, for example, also the continuous exposure to sun radiation and fire.



Product will not function if temperature is below 0 °C or above 45 °C!

H The grass combs **11** allow a very close cut to the wall or edge. Beware of running combs into objects while cutting close to walls/edges.

Do not leave the battery in the mower in direct sunlight.

Charge-control Indicator (see main figure)

The battery **8** is equipped with a charge-control indicator **14** which indicates its charge condition. The charge-control indicator consists of 3 green LEDs.

Press the button **13** to actuate the charge-control indicator **14**. The charge condition can also be checked when the battery is removed. After approx. 5 seconds, the charge-control indicator goes out automatically.

LED	Battery Capacity
Continuous lighting of 3 green LEDs	$\geq 2/3$
Continuous lighting of 2 green LEDs	$\geq 1/3$
Continuous lighting of 1 green LED	$\leq 1/3$
Flashing of 1 green LED	Reserve

When no LED lights up after actuating the button **13**, the battery is defective and must be replaced.

For safety reasons, the charge condition of the battery can only be checked when the product is at a standstill.

During the charging procedure, the 3 green battery LEDs light up one after the other and briefly go out. The battery is fully charged when the 3 green LEDs light up continuously. Approx. 5 minutes after the battery has been fully charged, the 3 green LEDs go out again.

Temperature Control Indicator (see main figure)

The red LED **15** signals that the battery or the electronics of the product are not within the optimum temperature range. The product will not operate at full capacity.

Temperature Control of the Battery

The red LED **15 flashes** when the battery is not within the optimum temperature range (-10 to +60 °C) and button **13** or the On/Off switch **1** is pressed.

The battery switches off at a temperature above 70 °C until the optimum temperature range is reached again.

Temperature Control of the product Electronics

The red LED **15 lights up continuously** when the temperature of the product electronics are above 75 °C and the On/Off switch **1** is pressed.

At a temperature above 90 °C, the electronics switch off the product until the temperature is within the allowable operating temperature range again.

Area of Cut (Battery Duration)

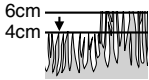
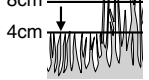
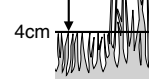
The area of cut (battery duration) depends on lawn conditions, grass density, moisture content, grass length and height of cut.

Switching the product on and off frequently during cutting will also reduce the area of cut (battery duration).

To improve the area of cut (battery duration) it is recommended to cut more frequently, raise the cutting height and walk at a normal pace.


The Example below shows impact of conditions against run time, for one battery.

Cutting Conditions:

Very light, dry grass	Light, dry grass	Medium, dense grass
		
Area of cut (Rotak 37 LI)		
up to 300 m ²	up to 150 m ²	up to 100 m ²
Area of cut (Rotak 43 LI)		
up to 350 m ²	up to 175 m ²	up to 125 m ²

To increase the run time an additional battery can be purchased from an authorised customer service agent for Bosch garden products.

Maintenance

 **Switch off, remove isolator key, battery and grassbox before adjusting or cleaning.**

Note: To ensure long and reliable service, carry out the following maintenance regularly.

Regularly check for obvious defects such as loose, dislodged or damaged blade, loose fixings, and worn or damaged components.

Check that covers and guards are undamaged and correctly fitted. Carry out necessary maintenance or repairs before using.

If the mower should happen to fail despite the care taken in manufacture and testing, repair should be carried out by an authorised customer service agent for Bosch garden products.

For all correspondence and spare parts orders, always include the 10-digit part number (TYP) from the nameplate of the machine!

Blade Maintenance


 **Switch off, remove isolator key, battery and grassbox before adjusting or cleaning.**

Turn the machine on its right side and inspect the blade; if blunt or damaged, replace.


Use the following procedure to remove and replace the blade.

Hold the blade **30** using gardening gloves (not provided) use a spanner (not provided) to remove the blade bolt **29**, blade washer **28** and blade. Fit the blade, blade washer and the blade bolt. Ensure that the blade is the correct way up (so that this ☺ symbol can be seen located as in figure I) and tighten the bolt firmly.

In the event of a blade becoming difficult to remove or fit, insert a screwdriver into hole **26** to lock the drive. Ensure the screwdriver is removed before attempting to turn the machine on.

 **Do not lubricate blade or blade bolt during refitting.**

Battery Maintenance

 **Switch off, remove isolator key, battery and grassbox before adjusting or cleaning.**

Use the following procedures to enable optimum usage of the battery:

- Protect the battery against moisture and water.
- Store the battery only within a temperature range from 0 °C to 45 °C. As an example, do not leave the battery in a vehicle or in the mower in direct sunlight.
- Clean the venting slots of the battery occasionally using a soft, clean and dry brush.

A considerably shortened operating time after charging is an indication that the battery is exhausted and must be replaced.


After Mowing/Storage

Clean the exterior of the machine thoroughly using a soft brush and cloth. Do not use water, solvents or polishes. Remove all grass and debris, especially from the ventilation slots **9**.

Turn the machine on its side and clean the blade area. If grass cuttings are compacted in the blade area, remove with a wooden or plastic implement.

Store the machine in a dry place. Do not place other objects on top of the machine.

To aid storage loosen the wing nuts **22** and fold the handles.

 Ensure cables are not trapped when folding/unfolding top handles, **do not drop the handles.**

Accessories

Blade

Rotak 37 LI..... F016 800 277

Rotak 43 LI..... F016 800 278

Fault Finding

The following table gives checks and actions that you can perform if your machine does not operate correctly. If these do not identify/remedy the problem, contact your service agent.

Warning: Switch off and remove the isolator key before investigating fault.

Symptom	Possible Cause	Remedy
Machine fails to operate	Underside of machine badly clogged Battery not fully charged Battery not fitted correctly Fuse faulty/blown in isolator key Mower in long grass Motor protector has activated Battery too hot/cold Isolator key has not been inserted correctly/ fully There is a short delay in the motor starting after engaging the switch lever	Clean machine (see "After Mowing/Storage") Charging the Battery Fit battery correctly Contact Service Agent Increase height of cut and tilt mower Allow to cool and increase height of cut Allow to cool/warm Fit correctly Hold switch lever for 1 - 3 seconds to start motor
Machine starts and stops immediately	Battery not fully charged Isolator not fully in Battery not fitted correctly Battery too hot/cold	Charging the Battery Fit correctly Fit correctly Allow to cool/warm and increase height of cut
Machine functions intermittently	Machines internal wiring damaged Motor protector has activated	Contact Service Agent Allow to cool and increase height of cut
Machine leaves ragged finish or motor labours	Height of cut too low Cutting blade blunt Underside of machine badly clogged Blade fitted upside down	Increase height of cut (see "Height of Cut Adjustment") Replace blade (see "Blade Maintenance") Clean machine (see "After Mowing/Storage") Refit blade correctly (see "Blade Maintenance")
Area of cut (battery duration) not large enough	Height of cut too low Grass too high Grass wet or damp Grass is dense An additional battery can be purchased from an authorised customer service agent for Bosch garden products	Increase height of cut Increase height of cut Wait until grass is dry Raise height of cut and walk slower, and cut more frequently Contact Service Agent
Cutting blade not rotating while machine switched on	Cutting blade obstructed Blade nut/bolt loose	Clear obstruction Tighten blade nut/bolt
Excessive vibration/noise	Blade nut/bolt loose Cutting blade damaged	Tighten blade nut/bolt Replace blade
No Charging Procedure Possible due to Defective Battery	The contacts of the battery are contaminated The battery is defective, due to a disconnection in the battery (individual cells)	Corrective measure: Clean the contacts (e. g. by inserting and removing the battery several times) or replace the battery, as required Replace the battery
The charge control LEDs 19 and 18 respectively, do not light up after inserting the mains plug into the socket	The charger plug is not inserted (properly) Socket, cable or charger are defective	Insert the plug (fully) into the socket Check the mains voltage and if necessary, have the battery charger checked by an authorized customer service station for Bosch power tools

Transport

The battery is tested in accordance with the UN Handbook ST/SG/AC.10/11/Rev.3 Part III, Sub-section 38.3. It has effective protection against internal overpressure and short circuiting as well as measures for prevention against forced rupture and dangerous reverse current.

The lithium equivalent contents contained in the battery is below the spelling relevant values. Therefore, the battery is not subject to the national and international regulations governing dangerous goods, neither as individual components nor when inserted into a machine. However, the Dangerous Goods Regulations can be relevant when transporting several batteries. In this case, it can be necessary to observe special conditions (e. g. for packaging). For more details, please refer to the instruction sheet under the following Internet address: <http://purchasing.bosch.com/en/start/Allgemeines/Download/index.htm>.

Disposal

Power tools, accessories and packaging should be sorted for environmental-friendly recycling.

Only for EC countries:



Do not dispose of power tools into household waste!

According to the European Directive 2002/96/EC on waste electrical and electronic equipment and its incorporation into national law, products that

are no longer suitable for use must be separately collected and sent for recovery in an environmentally-friendly manner.

Battery packs/batteries:



Li-Ion

Please observe the instructions in the Section "Transport".

Do not dispose of battery packs/batteries into household waste, water or fire. Battery packs/bat-

teries must be collected, recycled or disposed of in an environmentally-friendly way.

Only for EC countries:

Defective or dead batteries must be recycled according to the directive 91/157/EEC.

Batteries no longer suitable for use can be directly returned at:

Great Britain

Robert Bosch Ltd. (B.S.C.)
P.O. Box 98
Broadwater Park

North Orbital Road
Denham-Uxbridge
Middlesex UB 9 5HJ

☎ Service..... +44 (0) 18 95 / 83 87 82
☎ Advice line..... +44 (0) 18 95 / 83 87 91
Fax +44 (0) 18 95 / 83 87 89

After-Sales Service and Customer Assistance

Our after-sales service responds to your questions concerning maintenance and repair of your product as well as spare parts. Exploded views and information on spare parts can also be found under:

www.bosch-pt.com

Our customer consultants answer your questions concerning best buy, application and adjustment of products and accessories.

Great Britain

Robert Bosch Ltd. (B.S.C.)
P.O. Box 98
Broadwater Park
North Orbital Road
Denham
Uxbridge
UB 9 5HJ

Tel. Service: +44 (0844) 736 0109

Fax: +44 (0844) 736 0146

E-Mail: SPT-Technical.de@de.bosch.com

Ireland

Origo Ltd.
Unit 23 Magna Drive
Magna Business Park
City West
Dublin 24

Tel. Service: +353 (01) 4 66 67 00

Fax: +353 (01) 4 66 68 88

Australia, New Zealand and Pacific Islands

Robert Bosch Australia Pty.Ltd.
Power Tools
Locked Bag 66
Clayton South VIC 3169
Customer Contact Center

Inside Australia:

Phone: +61 (01300) 307 044

Fax: + 61 (01300) 307 045

Inside New Zealand:

Phone: +64 (0800) 543 353

Fax: +64 (0800) 428 570

Outside AU and NZ:

Phone: +61 (03) 9541 5555

www.bosch.com.au

Declaration of Conformity

Rotak 37 Li:

Measured values determined according to 2000/14/EC (1.60 m height, 1 m distance away) and EN ISO 5349.

Typically the A-weighted noise levels of the product are: Sound pressure level 81 dB(A); Guaranteed sound power level lower than 94 dB(A). Uncertainty $K = 3$ dB.

The typical hand/arm vibration is below 2.5 m/s^2 .

We declare under our sole responsibility that the product described under „Technical data“ is in conformity with the following standards or standardization documents: EN 50338 (battery powered product) and EN 60335 (battery charger) according to the provisions of the directives 2006/95/EC, 2004/108/EC, 98/37/EC (until 28 Dec 2009), 2006/42/EC (from 29 Dec 2009), 2000/14/EC.

2000/14/EC: Measured sound power level 92 dB(A).

Conformity assessment procedure according to Annex VI.

Notified body: SRL Sudbury, England

Notified body identification number: 1088

Technical file at: Bosch Lawn and Garden Ltd., PT-LG/EAE, Stowmarket, Suffolk IP14 1EY, England

CE 07

Leinfelden, 29.05.2008

Dr. Egbert Schneider
Senior Vice President
Engineering

Dr. Eckerhard Strötgen
Head of Product
Certification



Robert Bosch GmbH, Power Tools Division

Rotak 43 Li:

Measured values determined according to 2000/14/EC (1.60 m height, 1 m distance away) and EN ISO 5349.

Typically the A-weighted noise levels of the product are: Sound pressure level 84 dB(A); Guaranteed sound power level lower than 96 dB(A). Uncertainty $K = 3$ dB.

The typical hand/arm vibration is below 2.5 m/s^2 .

We declare under our sole responsibility that the product described under „Technical data“ is in conformity with the following standards or standardization documents: EN 50338 (battery powered product) and EN 60335 (battery charger) according to the provisions of the directives 2006/95/EC, 2004/108/EC, 98/37/EC (until 28 Dec 2009), 2006/42/EC (from 29 Dec 2009), 2000/14/EC.

2000/14/EC: Measured sound power level 95 dB(A).

Conformity assessment procedure according to Annex VI.

Notified body: SRL Sudbury, England

Notified body identification number: 1088

Technical file at: Bosch Lawn and Garden Ltd., PT-LG/EAE, Stowmarket, Suffolk IP14 1EY, England

CE 07

Leinfelden, 29.05.2008

Dr. Egbert Schneider
Senior Vice President
Engineering

Dr. Eckerhard Strötgen
Head of Product
Certification



Robert Bosch GmbH, Power Tools Division

Subject to change without notice



BOSCH

Robert Bosch GmbH
Power Tools Division
70745 Leinfelden-Echterdingen
www.bosch-pt.com

F016 L70 445 (08.06) O / 16 XXX



3 165140 704458