

2 Version

General

Type	2/2 control valve
Lubrication line connection	Ø 6 mm
Ambient temperature	0 – 55 °C
Filling	Fluid unit
Protection class as per EN60529	IP 65
Weight	225g
Application	bielomatik 2-channel system

Hydraulic system

Operating pressure	max. 20bar
Displacement	5 - 500 ml/h
Operating medium	Non-aggressive oils according to list of approved materials
Range of viscosity	10 - 100 mm ² /s

Drive

Type of drive	Electrical
Supply voltage	24 V DC
Supply current	Valve: 3 A (ED 25%), heating: 1.25 A
Frequency	Max: 25 Hz
Power consumption	Valve: 72 W, heating: 30W
Connection	M12x1 connector, A-coded / 4-pole

Sensor system

Temperature monitoring	
Supply voltage	24 V DC
Connection	M12x1 connector, A-coded / 4-pole

3 Dimensions

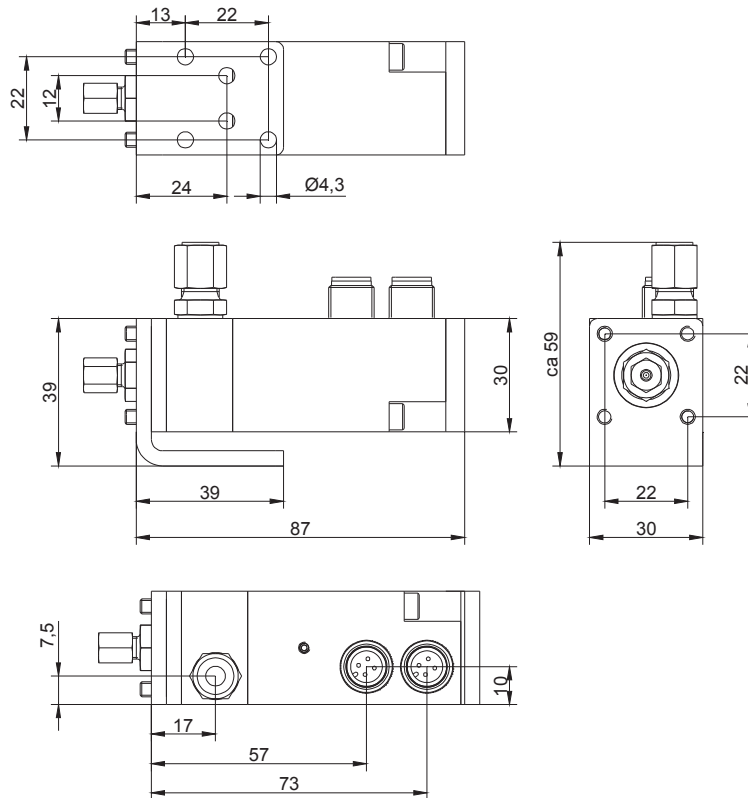
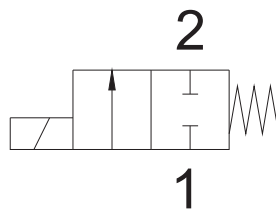


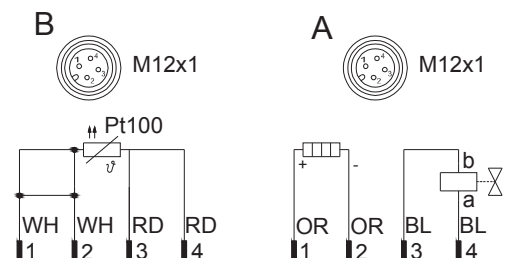
Figure 2: Dimensions

Piping diagram



1. Inflow connection
2. Operating connection

Terminal assignment



1. Valve and heating (A)
2. Temperature sensor (B)

4 Interfaces

Interface Type	Interface Format	Signal
Drive connection	M12x1 connector, A-coded / 4-pole	24 V DC
Sensor system connection	M12x1 connector, A-coded / 4-pole	24 V DC
Oil outlet connection	Ø 2.5 mm	Oil
Oil inflow connection	Ø 6 mm	Oil

5 Accessory parts

Article Number	Designation
67202034	Cable box M12x1, radial, 5 m cable
30040000	Steel pipe Ø 2.5 x 0.5
30040320	Polyamide pipe Ø 2.5 x 0.5
30049400	Insert sleeve for polyamide pipe Ø 2.5 x 0.5
30040002	Steel pipe Ø 6 x 0.7
30040325	Polyamide pipe Ø 6 x 1
30049403	Insert sleeve for polyamide pipe Ø 6 x 1
30045903	Connection panel for rotary union

6 Scope of Application

Article Number	Designation
30022764	Quick valve