

## Lubrication unit MPT 3

### 1 Application

The MPT 3 lubrication unit is a powerful gear pump unit for quick pressure build-up. It is suitable for automated and extensive lubrication, which must be done several times daily to maximum once per minute.



- 1. Level control connection
- 2. Lubrication line connection
- 3. Filler cap
- 4. Rating plate
- 5. Tank

- 6. Drain screw
- 7. Swivel bar fixing
- 8. Motor connection
- 9. Motor

## 2 Version

### General

Type	Lubrication unit
Lubrication line connection	Pipe connection Ø 6 mm
Ambient temperature	0° to 40°C
Filling	manual
Protection class as per EN60529	IP 54
Weight	4.4 kg
Tank volume	3.0 litre
Application	bielomatik single line lubrication systems

### Hydraulic system

Operating pressure	50 bar
Displacement	0.5 l/min
Operating medium	Mineral oil, fluid grease
Range of viscosity	50 to 750 mm <sup>2</sup> /s, NLGI 000-0 ★

★ as per fluid grease release list

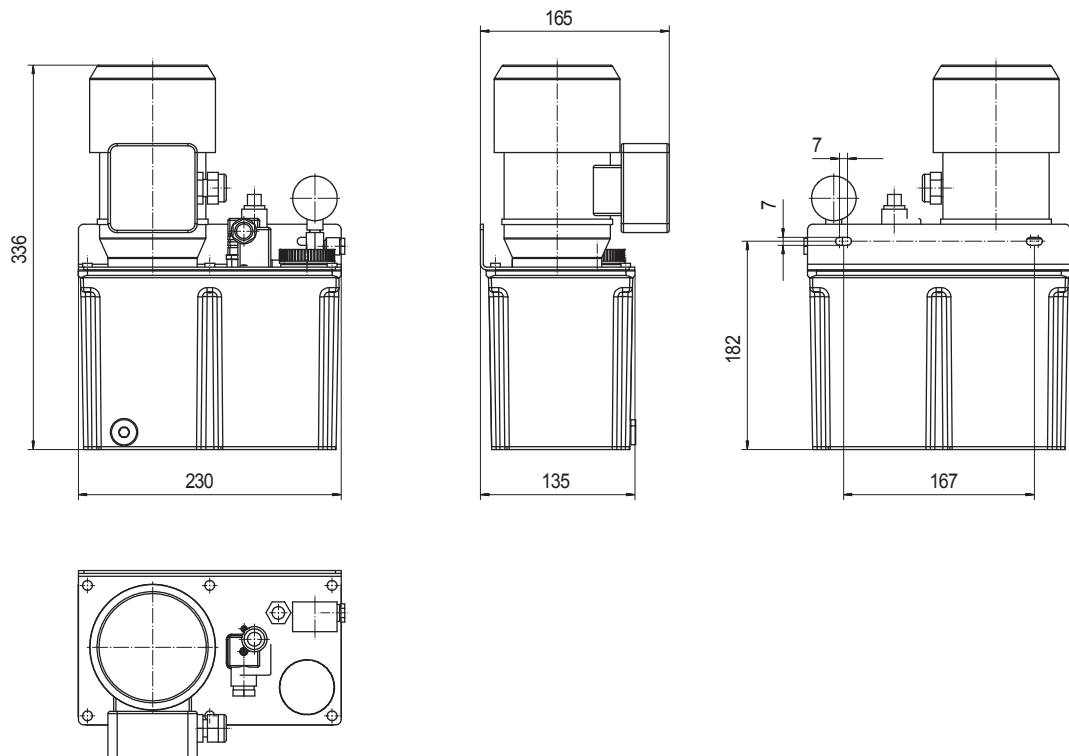
### Drive

Type of drive	Electrical
Supply voltage	420 V
Supply current	0.35 A
Frequency	50 Hz
Power consumption	90 W
Connection	Terminal strip
Speed	1400 min <sup>-1</sup>

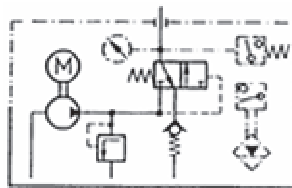
### Sensor system

<b>Level control</b>	
Nominal voltage	24 V DC
Switching current	≤ 100 mA
Connection	Right-angle connector DIN 43650-A
<b>Pressure monitoring</b>	
Nominal voltage	24 V DC
Switching current	≤ 2 A
Connection	Right-angle connector DIN 43650-A

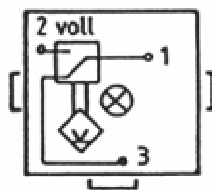
### 3 Dimensions



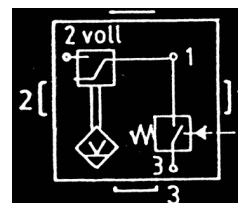
#### Piping diagram



#### Sensor system connection assignment



*Level control*  
 1-2 opens If container empty  
 1-3 closes if container empty



*Level control and pressure switch*  
 1-2 opens If container empty  
 1-3 closes when pressure is achieved

## 4 Interfaces

Interface Type	Interface Format	Signal
Drive connection	Terminal strip	420 V
Level control connection	Right-angle connector DIN 43650-A	24 V
Pump output	Pipe connection Ø 6 mm	Operating medium

## 5 Spare parts

Order number	Designation
300 27 119	Pressure gauge
300 39 660	Filler cap
300 49 232	Clamping ring Ø 6 mm
300 49 109	Union screw Ø 6 mm
300 30 411	Tank

## 6 Accessory parts

Order number	Designation
see catalogue	Polyamide pipe
see catalogue	Insert sleeve
see catalogue	Steel pipe

## 7 Scope of Application

Order number	Level control	Pressure gauge	Pressure
<b>300 16 960</b>	Oil: Normally open	no	yes
<b>300 16 961</b>	Fluid grease:	no	yes
<b>300 16 970</b>	Oil: Normally closed	no	no
<b>300 16 978</b>	Oil: Normally closed	yes	no
<b>300 16 988</b>	Fluid grease:	yes	no