

AVR[®] STK500

STARTER KIT AND DEVELOPMENT SYSTEM



The Atmel AVR STK500 is a starter kit and development system for Atmel's AVR Flash microcontrollers. The STK500 gives designers a quick start to developing code on the AVR, combined with features for developing prototypes and testing new designs. The STK500 interfaces AVR Studio[®], Atmel's Integrated Development Environment (IDE) for code writing and debugging. The STK500 starter kit includes the following:

- AVR Studio Software Interface
- RS-232 Interface to PC for Programming and Configuration
- Power Supply Regulator for 9V - 12V DC Power
- Sockets for 8-, 20-, 28- and 40-pin AVR Devices
- Serial In-System Programming (ISP) of AVR Devices
- In-System Programmer for Programming AVR Devices in External Target Systems
- Parallel and Serial High-voltage Programming of AVR Devices
- 8 Push Buttons and 8 LEDs for General Use
- All AVR I/O Ports Easily Accessible through Pin Header Connectors
- RS232 Port for General Use
- Expansion Connectors for Plug-in Modules and Prototype Area
- On-board 2-megabit DataFlash[®] for Nonvolatile Data Storage
- Software Upgradable from AVR Studio to Support Future AVR Devices
- Flexible Clocking, Voltage and Reset System



Corporate Headquarters

2325 Orchard Parkway
San Jose, CA 95131
Tel: (408) 441-0311
Fax: (408) 487-2600

Europe

Atmel SarL
Route des Arsenaux 41
Casa Postale 80
CH-1705 Fribourg
Switzerland
Tel: (41) 26-426-5555
Fax: (41) 26-426-5500

Asia

Atmel Asia, Ltd
Room 1219
Chinachem Golden Plaza
77 Mody Road
Tsimshatsui East, Kowloon
Hong Kong
Tel: (852) 2721-9778
Fax: (852) 2722-1369

Japan

Atmel Japan K.K.
9F, Tonetsu Shinkawa Bldg.
1-24-8 Shinkawa
Chuo-ku, Tokyo 104-0033
Japan
Tel: (81) 3-3523-3551
Fax: (81) 3-3523-7581

e-mail

literature@atmel.com

Web Site

<http://www.atmel.com>

©Atmel Corporation 2001

Atmel Corporation makes no warranty for the use of its products, other than those expressly contained in the Company's standard warranty which is detailed in Atmel's Terms and Conditions located on the Company's web site. The Company assumes no responsibility for any errors which may appear in this document, reserves the right to change devices or specifications detailed herein at any time without notice, and does not make any commitment to update the information contained herein. No licenses to patents or other intellectual property of Atmel are granted by the Company in connection with the sale of Atmel products, expressly or by implication. Atmel's products are not authorized for use as critical components in life support devices or systems.

Atmel®, AVR®, AVR Studio®, and DataFlash® are registered trademarks of Atmel.

Other terms and product names may be trademarks of others.

1939B-10/01/10M

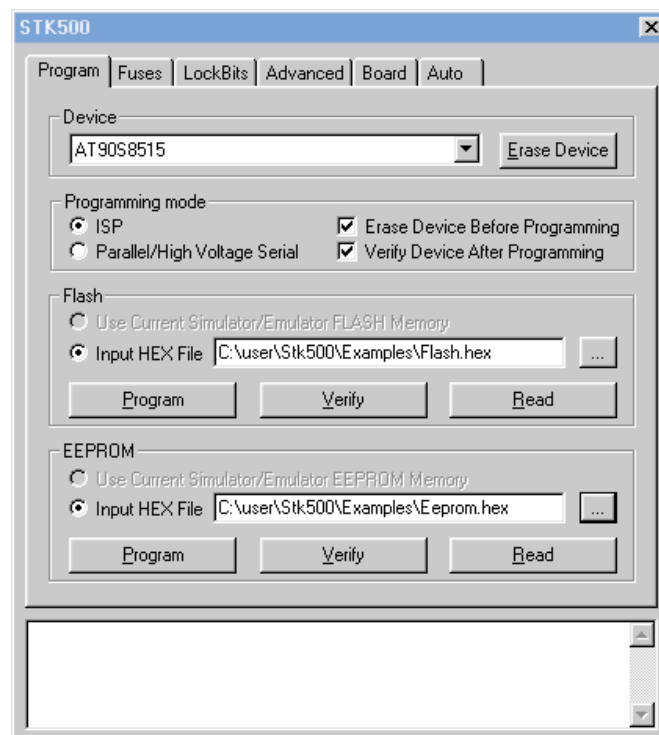
The STK500 is a complete starter kit, programming tool and development system for Atmel's AVR microcontrollers. The STK500 gives AVR users the freedom to develop and test complete AVR designs and prototypes. The STK500 supports the following Atmel AVR devices:

- ATtiny11
- ATtiny12
- ATtiny15
- ATtiny22
- ATtiny28
- AT90S1200
- AT90S2313
- AT90S2323
- AT90S2333
- AT90S2343
- AT90S4414
- AT90S4433
- AT90S4434
- AT90S8515
- AT90S8535
- ATmega161
- ATmega163
- ATmega323
- ATmega103¹
- ATmega128¹

Note 1: The device is supported through ISP programming of external target or through the STK501 expansion module.

The STK500 supports In-System Programming (ISP) of all AVR microcontrollers in the sockets as well as programming of external target systems. The AVR I/O ports are accessible on pin headers that can be used for connecting the on-board LEDs and push buttons, or external signals. The extra RS232 port can be connected to any of the I/O pins.

The STK500 programming interface is integrated in AVR Studio. The Flash, EEPROM and all fuse options can be programmed individually or with the sequential automatic programming option. The DOS programming software is included for efficient batch programming in a production environment. The STK500 clock frequency and supply voltage are controlled from AVR Studio.



The active simulator or emulator code in AVR Studio can easily be programmed into the STK500 with a simple click of the mouse.

Ordering Information for the STK500

The STK500 starter kit and development system is available from Atmel-franchised distributors; the ordering code is ATSTK500. The latest version of AVR Studio is freely available from the Atmel web site (<http://www.atmel.com>).