



Pacific 155

SHOTSHELL RELOADING INSTRUCTIONS

To help you load completely satisfactory ammunition the first time you operate your Pacific 155, this instruction folder contains step-by-step procedures and a list of "Recommended Loads." Consult our brochure, "The Facts and the Fun" for more information (included with your loader). However, this folder is not intended to take the place of a complete loading manual, and it is recommended that you obtain a recently published, reliable guide for loading modern shotshell ammunition.

In addition to empty shell cases, you'll need to obtain powder, shot, wads and primers. Before purchasing these components, note the combination of shot and powder you'll be loading from the identification numbers stamped into the shot and powder bushings. Then you can consult the "Recommended Loads" chart in this folder to select components.

For instance,

IF YOUR 155 HAS:

- 12 gauge 2¾" dies,
- a 1⅞ oz. #7½ shot bushing,
- and a #444 powder bushing;

YOU CAN USE THESE
COMPONENTS FOR
A BALANCED LOAD:

- Winchester AA, RXP, or Champion II shell cases.
- Hercules Red Dot powder (abbreviated "RD")
- shot of size specified on the bushing.
- Pacific Versalite wads (or any other "LTSP" wad).
- and #209 primers correct for your shell case and load (ask your dealer)

Pacific Tool Company cannot assume any liability for damage which may result from use of the products or information given here in, since Pacific has no control over manner in which products or components are used in the reloading operation.

Div. of **Hornady**
Pacific
TOOL COMPANY

P.O. Box 2048
Grand Island, Nebraska 68801

(308) 384-2308

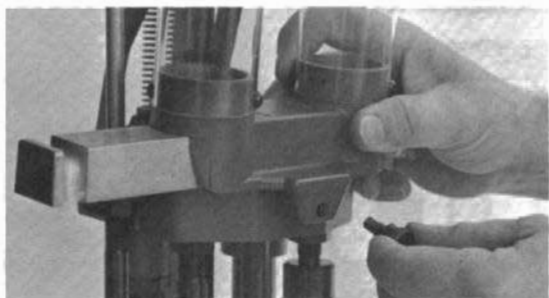
You should always follow loading tables exactly, as they have been carefully developed to deliver maximum performance and safety. Resist the temptation to add a little more shot or a little more powder to "soup up" the load. Not only can pressures rise to dangerous levels upon firing, but the load's ballistics may be upset, resulting in "blown" patterns.

Shotshell loading is a completely safe hobby if common sense prevails. Modern smokeless powder is NOT explosive, but it is highly combustible, so appropriate precautions should be taken. Never mix powders, and never use unidentified powders. Keep new primers in their factory trays until you can use them, and keep your loading area neat.

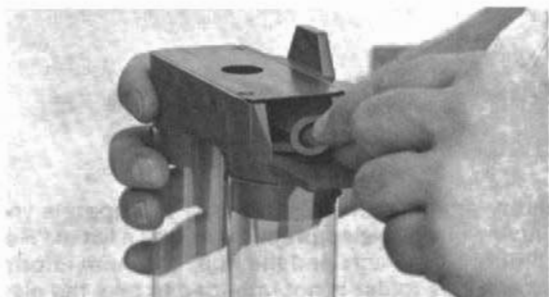
As an additional safety measure, always wear safety glasses while loading.

SETTING UP YOUR 155

1. Mount the 155 on a sturdy bench at a comfortable working distance, allowing plenty of room on both sides of the reloader for components you will be loading and for finished shells. Connect the return spring between the operating lever and the die head casting. Do not fill powder and shot hoppers at this time.



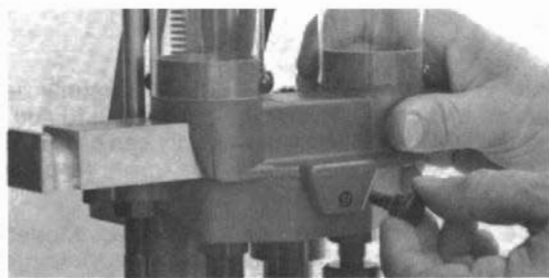
2. Remove bolt at base of measure casting and lift off entire assembly.



3. Turn measure casting assembly upside-down, remove charge bar stop pin, and slide charge bar from casting. Install rubber measure seals (packed separately) into recesses below powder and shot hoppers.



4. Install powder and shot bushings in charge bar as shown. Slide charge bar back into measure casting, making certain that charge bar is not in reversed position. (In the correct position, the shot bushing will be beneath the shot hopper and powder bushing will be beneath powder hopper.) Replace charge bar stop pin. **IMPORTANT: DO NOT ATTEMPT TO LOAD WITHOUT FIRST INSTALLING BUSHINGS. BE SURE THAT CHARGE BAR IS NOT REVERSED.**



5. Replace entire assembly onto the 155 and secure with measure casting bolt. Slide charge bar to full-left position. Now fill hoppers, with powder in left hopper and shot in right hopper.

LOADING THE FIRST SHELL

Sort empty cases as to brand and type. Inspect cases and discard those with cracks, loose base wads, or any other defect. You will find it is best to load only one brand and type shell at a time, so that you may use the same combination of components and loader adjustments without interruption.

The 155 has been factory adjusted, but some slight adjustment may be made necessary by variations in the components you are using.

If you have the APF (Automatic Primer Feed) model, fill the primer tube with primers, using the Pacific Primer Tube Filler.

STATION 1 **1** Resize and deprime.



1. Insert empty shell case into die.



2. Lower operating handle to full stop. This resizes and deprimers the case. Raise handle fully and shell will be ejected from die.

(All reloading operations end on the positive stop that occurs when the resize die touches the base casting. Therefore, adjustment of this die affects the adjustment of all other dies. When properly adjusted, resize die should lightly touch base casting when operating lever is fully lowered.)

STATION 2 **2** Prime.



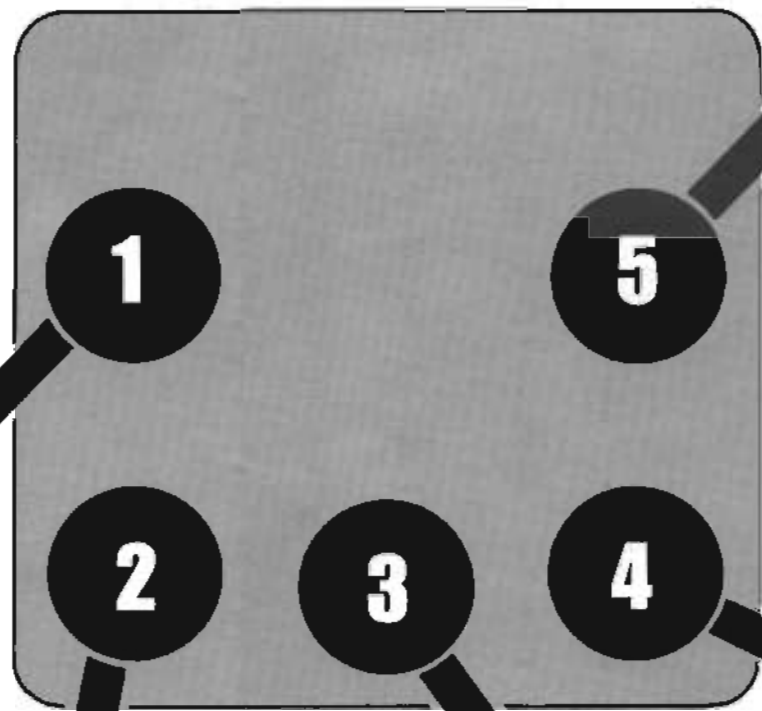
1. If you are loading with the 155 APF, transfer primer to Primer Seating Pad by operating Primer Feed as shown. With standard 155, manually place primer base down in center of Primer Seating Pad.



2. Fit shell over primer seating punch, and



3. lower operating lever to full "down" position. This seats new primer (primer seating pressure may be adjusted by loosening the lock nut and turning the Primer Seating Punch to raise or lower it.)



STATION 3 **3** Drop powder, seat wad & drop shot.



1. Place shell under wad guide and lower operating lever.



2. While holding operating lever down, move charge bar fully to right. This drops measured amount of powder into shell case. Raise operating lever.



3. If you are using one-piece shot protector wads (such as Pacific Versalite wads) fit wad over powder/shot drop tube before lowering handle. If using fiber wads, place directly in wad guide. Seat wad by lowering operating lever to full stop. Wad pressure may be read while operating lever is fully lowered. (Wad pressure may be adjusted by raising or lowering drop tube.)



4. Raise handle slightly and move charge bar fully to left. This drops measured amount of shot into shell case.

(Note: There should be about 1/2" - 3/16" between the shot and the mouth of the case for proper crimping. If measurement is otherwise, you may be using the wrong combination of components.)

STATION 5 **5** Finish crimp and taper.



1. Slide shell into shell holder at station 5.



2. Lower handle to full stop. This completes the crimp, while resizing and tapering the shell to proper dimensions.

(Adjustment may be made by loosening the die body lock nut and threading the entire die up or down to change the amount of taper. Crimp depth can be adjusted by loosening the lock nut on the crimp plunger and threading the crimp plunger up or down.)



3. The finished shell.

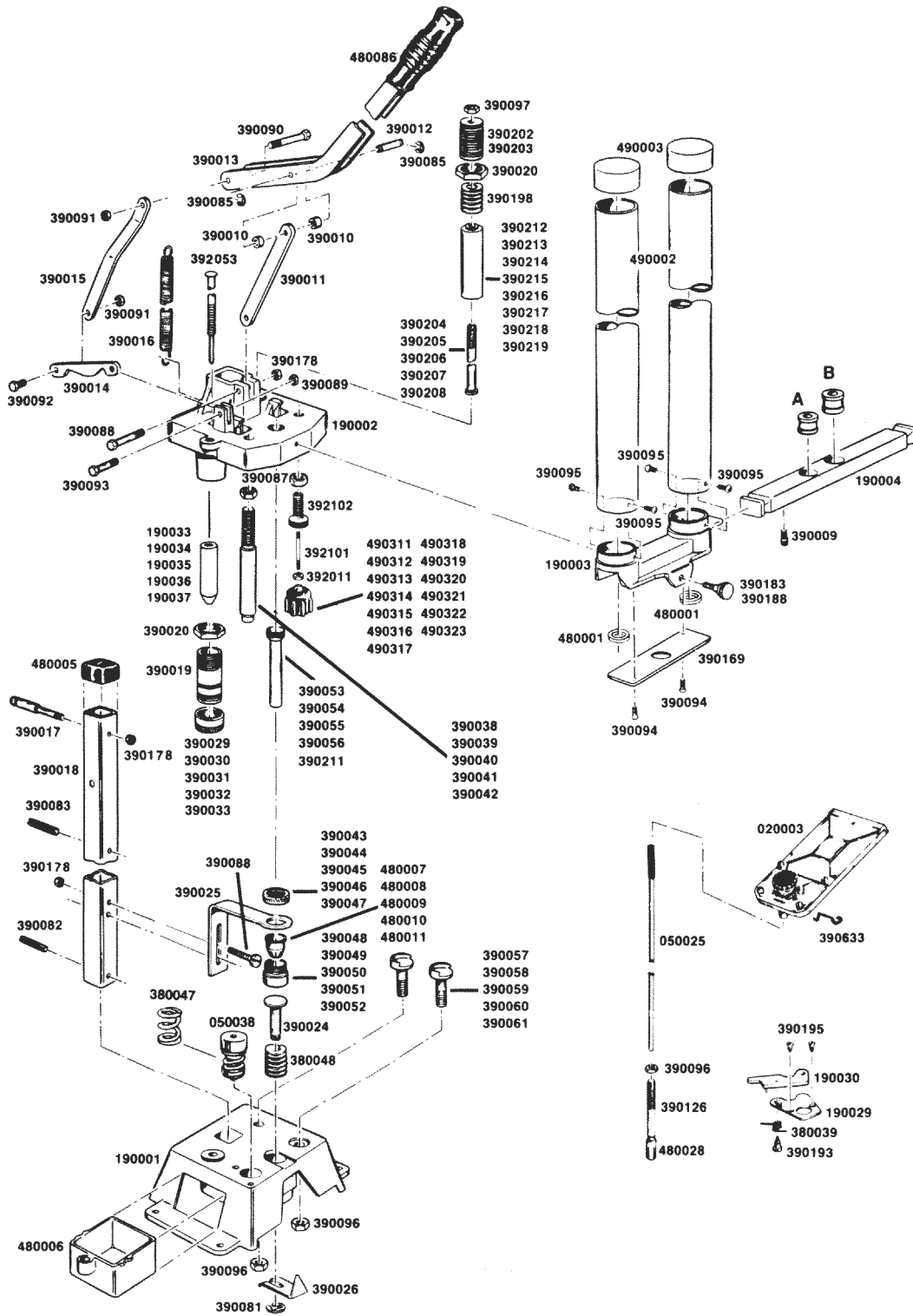
STATION 4 **4** Start crimp.



1. Place shell in shell holder at station 4.



2. Lower operating lever to full stop. This starts the crimp





Pacific 155 Shotshell Reloader

PARTS LISTING

A ...Powder Bushing

B ...Shot Bushing

190001...Base Casting
190002...Die Head Casting
190003...Measure Casting
190004...Charge Bar
190033...Deprime Punch Guide, 12 Ga.
190034...Deprime Punch Guide, 16 Ga.
190035...Deprime Punch Guide, 20 Ga.
190036...Deprime Punch Guide, 28 Ga.
190037...Deprime Punch Guide, 410 Ga.
380047...Primer Seating Spring
380048...Wad Pressure Spring
390009...Charge Bar Stop Pin
390010...Link Spacer
390011...Die Head Link
390012...Handle-Link Pin
390013...Handle
390014...Lower Clevis Link
390015...Upper Clevis Link
390016...Return Spring
390017...Return Spring Standoff Bolt
390018...Main Guide Post
390019...Size Die Body
390020...Die Body Lock Nut
050038...Primer Seater Assembly
380047...(spring sold separately)
390024...Wad Pressure Pad
390025...Wad Guide Bracket
390026...Wad Pressure Indicator
390029...Size Die Ring Cap, 12 Ga.
390030...Size Die Ring Cap, 16 Ga.
390031...Size Die Ring Cap, 20 Ga.
390032...Size Die Ring Cap, 28 Ga.
390033...Size Die Ring Cap, 410 Ga.
390038...Primer Seater Punch, 12 Ga.
390039...Primer Seater Punch, 16 Ga.
390040...Primer Seater Punch, 20 Ga.
390041...Primer Seater Punch, 28 Ga.
390042...Primer Seater Punch, 410 Ga.
390043...Wad Guide Cap, 12 Ga.
390044...Wad Guide Cap, 16 Ga.
390045...Wad Guide Cap, 20 Ga.
390046...Wad Guide, Cap, 28 Ga.
390047...Wad Guide Cap, 410 Ga.
390048...Wad Guide Body, 12 Ga.
390049...Wad Guide Body, 16 Ga.
390050...Wad Guide Body, 20 Ga.
390051...Wad Guide Body, 28 Ga.
390052...Wad Guide Body, 410 Ga.
390053...Drop Tube, 12 Ga.
390054...Drop Tube, 16 Ga.
390055...Drop Tube, 20 Ga.
390056...Drop Tube, 410 Ga.
390057...Shell Holder, 12 Ga.
390058...Shell Holder, 16 Ga.
390059...Shell Holder, 20 Ga.
390060...Shell Holder, 28 Ga.
390061...Shell Holder, 410 Ga.
390081...Wad Pressure Pad Clip
390082...Lower Guide Post Roll Pin
390083...Upper Guide Post Roll Pin
390085...Handle-Link Pin Clip

390087...Crimp Starter & Seater Punch Lock Nut
390088...Die Head Link Attaching Bolt
390089...Clevis Pivot Bolt Nut
390090...Handle & Post Pivot Bolt
390091...Handle & Post Pivot Bolt Nut
390092...1/4x20x3/8" Bolt
390093...Clevis Attaching Bolt
390094...Measure Casting Plate Screw
390095...10x32x3/8" Screw
390096...Shell Holder Nut
390097...3/8 x 16 Lock Nut
390169...Measure Casting Plate
390178...1/4"-20 Nut
390183...Measure Attaching Bolt, 28 & 410 Ga.
390188...Measure Attaching Bolt, 12, 16 & 20 Ga.
390198...Crimp Die Spring
390202...Crimp Die Bushing, 12, 16, 20 Ga.
390203...Crimp Die Bushing, 28 & 410 Ga.
390204...Crimp Plunger, 12 Ga.
390205...Crimp Plunger, 16 Ga.
390206...Crimp Plunger, 20 Ga.
390207...Crimp Plunger, 28 Ga.
390208...Crimp Plunger, 410 Ga.
390211...Drop Tube, 28 Ga.
390212...Crimp Die Body, 12 Ga. 2 3/4"
390213...Crimp Die Body, 12 Ga. 3"
390214...Crimp Die Body, 16 Ga. 2 3/4"
390215...Crimp Die Body, 20 Ga. 2 3/4"
390216...Crimp Die Body, 20 Ga. 3"
390217...Crimp Die Body, 28 Ga.
390218...Crimp Die Body, 410 Ga. 2 1/2"
390219...Crimp Die Body, 410 Ga. 3"
392011...10x32 Nut
392053...Eject Bolt
392101...Crimp Starter Rod
392102...Crimp Starter Bushing
480001...Measure Seal
480005...Post Cap
480006...Primer Catcher
480007...Spring Fingers, 12 Ga.
480008...Spring Fingers, 16 Ga.
480009...Spring Fingers, 20 Ga.
480010...Spring Fingers, 28 Ga.
480011...Spring Fingers, 410 Ga.
480086...Handle Grip
490002...Powder-Shot Hopper
490003...Hopper Cap
490311...Crimp Starter, 12 Ga. 8 Pt.
490312...Crimp Starter, 12 Ga. 6 Pt.
490313...Crimp Starter, 12 Ga. Paper
490314...Crimp Starter, 16 Ga. 8 Pt.
490315...Crimp Starter, 16 Ga. 6 Pt.
490316...Crimp Starter, 16 Ga. Paper
490317...Crimp Starter, 20 Ga. 8 Pt.
490318...Crimp Starter, 20 Ga. 6 Pt.
490319...Crimp Starter, 20 Ga. Paper
490320...Crimp Starter, 28 Ga. 6 Pt.
490321...Crimp Starter, 28 Ga. Paper
490322...Crimp Starter, 410 Ga. 6 Pt.
490323...Crimp Starter, 310 Ga. Paper

AUTOMATIC PRIMER FEED PARTS LIST

020003...Primer Tube Filler
050025...Primer Tube Assembly
190029...Stationary Plate
190030...Moveable Plate
380039...Return Spring
390096...Primer Feed Body Lock Nut
390126...Primer Feed Body
390193...Shoulder Bolt
390195...Flat Head Screw 10x32x1/2"
390633...Primer Tube Filler Spring
480028...Primer Feed Stop Unit

Prices and/or specifications subject to change without notice.

NOTICE: Prices and/or specifications are subject to change without notice. Discontinued products may or may not have replacement parts available. Call for availability 800-338-3220.

For parts inquiries, call 1-800-338-3220

RECOMMENDED SHOTSHELL LOADS

12 GAUGE

Drum Equiv.	Shot Dz.	Case Type	Case Length	Powder Grains	Powder Type	Wad Type	155 Powder Bushing
(TARGET LOADS)							
2 1/4	1 1/4	LC Plastic	2 3/4"	17	700X	LTSP	417
2 1/4	1 1/4	SC Plastic	2 3/4"	17	700X	STSP	417
2 1/4	1 1/4	LC Paper	2 3/4"	18	700X	LTSP	426
2 1/4	1 1/4	LC Plastic	2 3/4"	17	RD	LTSP	429
2 1/4	1 1/4	SC Plastic	2 3/4"	17	RD	STSP	429
2 1/4	1 1/4	LC Paper	2 3/4"	18	RD	LTSP	444
2 1/4	1 1/4	LC Plastic	2 3/4"	19.5	452AA	LTSP	408
2 1/4	1 1/4	SC Plastic	2 3/4"	19.5	452AA	STSP	408
2 1/4	1 1/4	LC Paper	2 3/4"	20.5	452AA	LTSP	420
3	1 1/2	LC Plastic	2 3/4"	18	700X	LTSP	426
3	1 1/2	SC Plastic	2 3/4"	18	700X	STSP	426
3	1 1/2	LC Paper	2 3/4"	19	700X	LTSP	435
3	1 1/2	LC Plastic	2 3/4"	18	RD	LTSP	444
3	1 1/2	SC Plastic	2 3/4"	18	RD	STSP	444
3	1 1/2	LC Paper	2 3/4"	19	RD	LTSP	458
3	1 1/2	LC Plastic	2 3/4"	23.5	473AA	LTSP	414
3	1 1/2	SC Plastic	2 3/4"	23.5	473AA	STSP	414
3	1 1/2	LC Paper	2 3/4"	24.5	473AA	LTSP	423

(FIELD LOADS)

3 1/4	1 1/4	LC Plastic	2 3/4"	23	Unique	SFSP	438
3 1/4	1 1/4	LC Plastic	2 3/4"	30	AL5	SFSP	477
3 1/4	1 1/4	LC Plastic	2 3/4"	21	GD	SFSP	459
3 1/4	1 1/4	LC Plastic	2 3/4"	25	473AA	LTSP	426
3 1/4	1 1/4	LC Paper	2 3/4"	26	473AA	LTSP	435
3 1/4	1 1/4	LC Plastic	2 3/4"	24	PB	SFSP	462
3 1/4	1 1/4	LC Paper	2 3/4"	25	PB	SFSP	471
3 1/2	1 1/4	LC Plastic	2 3/4"	31	AL5	SFSP	488
3 1/2	1 1/4	LC Paper	2 3/4"	32	AL5	SFSP	495
3 1/2	1 1/4	LC Plastic	2 3/4"	35	540	SFSP	423
3 1/2	1 1/4	LC Paper	2 3/4"	38	540	LTSP	429
3 1/2	1 1/4	LC Plastic	2 3/4"	25	Unique	SFSP	456
3 1/2	1 1/4	LC Paper	2 3/4"	26	Unique	SFSP	468
4	1 1/2	LC Plastic	2 3/4"	25	SR7625	SFSP	447
4	1 1/2	LC Paper	2 3/4"	30	SR7625	SFSP	492

(SHORT MAGNUM)

3 1/2	1 1/2	LC Plastic	2 3/4"	36.5	571	SFSP	432
4	1 1/2	LC Plastic	2 3/4"	30	AL7	POFF	465
4	1 1/2	LC Paper	2 3/4"	34	AL7	POFF	495
4	1 1/2	LC Plastic	2 3/4"	23	SR7625	POFF	429

(3" MAGNUM)

4	1 3/4	Plastic	3"	38	571	SFSP	429
4 1/4	1 3/4	Plastic	3"	39	AL8	STSP	558
4 1/4	1 3/4	Plastic	3"	38	AL8	FM#3	549
4 1/4	1 3/4	Plastic	3"	30	SR7625	STSP	492
4 1/2	1 3/4	Plastic	3"	39	AL8	FM#3	549
4	1 3/4	Plastic	3"	33.5	571	STSP	414
4 1/2	1 3/4	Plastic	3"	35	AL8	FM#1	525

16 GAUGE

(TARGET AND FIELD LOADS)

2 1/2	1	Plastic	2 3/4"	15	700X	POFF	390
2 1/4	1	Plastic	2 3/4"	14	Red Dot	SP	380
2 1/4	1	Plastic	2 3/4"	16	700X	SP	405
2 1/4	1	Plastic	2 3/4"	23	AL5	POFF	417
3	1 1/4	Plastic	2 3/4"	22	Herco	SP	438
3	1 1/4	Plastic	2 3/4"	18	Unique	SP	390
3	1 1/4	Plastic	2 3/4"	18	Green Dot	SP	429
3	1 1/4	Plastic	2 3/4"	23	AL7	POFF	411
Max	1 1/4	Plastic	2 3/4"	26	SR4756	POFF	465
Max	1 1/4	Plastic	2 3/4"	30.5	571	SP	396

20 GAUGE

(TARGET AND FIELD LOADS)

2 1/2	3/4	Plastic	2 3/4"	18	AL5	SP	375
2 1/2	3/4	Plastic	2 3/4"	16	Unique	SP	369
2 1/2	3/4	Plastic	2 3/4"	18	473AA	SP	383
2 1/2	3/4	Plastic	2 3/4"	14	Green Dot	SP	381

Drum Equiv.	Shot Dz.	Case Type	Case Length	Powder Grains	Powder Type	Wad Type	155 Powder Bushing
-------------	----------	-----------	-------------	---------------	-------------	----------	--------------------

(20 GA. TARGET AND FIELD LOADS continued)

2 1/2	3/4	Plastic	2 3/4"	13	PB	SP	339
2 1/2	3/4	Plastic	2 3/4"	21	SR4756	SP	417
2 1/2	3/4	Plastic	2 3/4"	18	Herco	SP	399
2 1/2	3/4	Plastic	2 3/4"	17	SR7625	SP	389
2 1/4	3/4	Paper	2 3/4"	18	Green Dot	SP	405
2 1/4	1	Plastic	2 3/4"	20	AL7	POFF	381
2 1/4	1	Plastic	2 3/4"	16	Unique	SP	389
2 1/4	1	Plastic	2 3/4"	19	Herco	SP	414
2 1/4	1	Paper	2 3/4"	24	SR4756	SP	447
2 1/4	1	Plastic	2 3/4"	22	SR4756	SP	429
3	1 1/4	Plastic	2 3/4"	20	Herco	SP	426
3	1 1/4	Plastic	2 3/4"	27	AL8	POFF	459
3	1 1/4	Plastic	2 3/4"	22	SR4756	SP	429

(3" FIELD LOADS)

Max.	1 1/2	Plastic	3"	24	SR4756	SP	447
Max.	1 1/2	Plastic	3"	35	IMR4227	SP	453
Max.	1 1/2	Plastic	3"	38	IMR4227	POFF	459
Max.	1 1/4	Plastic	3"	26	AL8	POFF	447
Max.	1 1/4	Plastic	3"	24	571	SP	351
Max.	1 1/4	Plastic	3"	21	SR4756	SP	417

28 GAUGE

(TARGET AND FIELD LOADS)

2 1/4	3/4	Plastic	2 3/4"	23	AL8	NCFF	423
2 1/4	3/4	Plastic	2 3/4"	14.5	SR7625	SP	342
2 1/4	3/4	Plastic	2 3/4"	14	Unique	NCFF	345
2 1/4	3/4	Plastic	2 3/4"	17.5	540	SP	297
2 1/4	3/4	Plastic	2 3/4"	19.0	571	SP	312

.410

(TARGET LOADS)

Max.	1/2	Paper	2 1/2"	16	2400	SP	303
Max.	1/2	Paper	2 1/2"	14	H110	NCFF	268
Max.	1/2	Plastic	2 1/2"	15	2400	SP	297
Max.	1/2	Plastic	2 1/2"	15	IMR4227	SP	300
Max.	1/2	Plastic	2 1/2"	14	H110	SP	286
Max.	1/2	Plastic	2 1/2"	14	296	SP	259

(FIELD LOADS)

Max.	1/2	Plastic	3"	16	IMR4227	NCFF	312
Max.	1/2	Plastic	3"	13.5	296	SP	256
Max.	1/2	Plastic	3"	13	H110	NCFF	256
Max.	1/2	Paper	3"	18	2400	NCFF	303

*Requires Special Small Gauge Primers

RECOMMENDED WAD PRESSURE: 10-50 lbs. Not critical, may be varied for proper crimp. Wad pressure MUST be at least 10 lbs. to ensure proper wad sealing.

12 GAUGE CASES

LC Plastic: Remington/Peters RXP, Winchester/Western AA, Federal Gold Medal, Remington/Peters high brass, Winchester/Western high brass, Federal high brass. LC Paper: Federal paper Champion. SC Plastic: Remington/Peters All American. SC Paper: Winchester Ranger, Western Expert, Peters Victor, Remington Shur Shot. 3" Magnum: Remington/Peters 3" Hi Velocity, Winchester/Western 3" Super X.

16 GA., 20 GA., 28 GA., .410 CASES

Remington/Peters paper and plastic. Winchester/Western paper and plastic. Federal paper and plastic.

WADS

LTSP (Long Target Shot Protector) Pacific Red Versalite, Winchester/Western WAA12, Remington/Peters W29930, Federal Champion, Alcan "D".

STSP (Short Target Shot Protector) Pacific Green Versalite, Winchester/Western WAA12R, Remington/Peters W23694, Alcan "C".

SFSP (Short Field Shot Protector) Pacific Blue Versalite, Remington/Peters W29928.

POFF Plastic over powder and fiber filler.

NCFF Nitro card and fiber filler.

FM (#1 & #3) Alcan Flite Max.

SP (Shot Protector) Pacific White Versalite, Remington Power Piston, Winchester AA, Federal Pushin' Cushion (20 ga. only), Federal Shot Cup (.410 only).