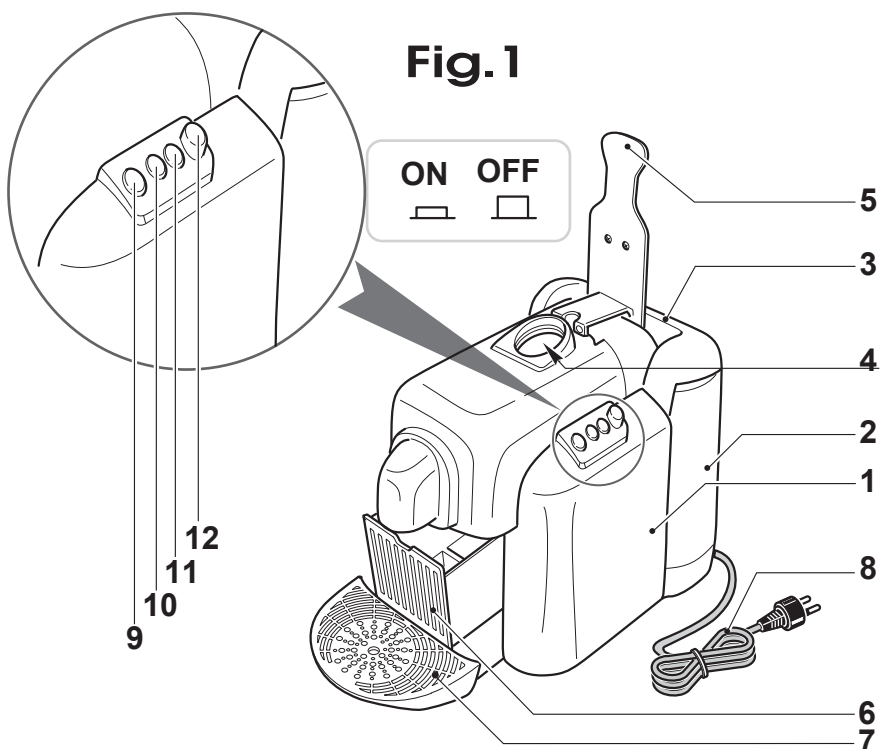


# Maki

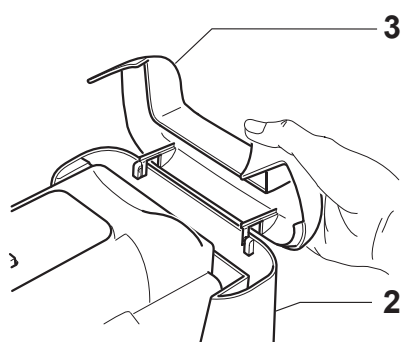
胶囊咖啡机使用说明书



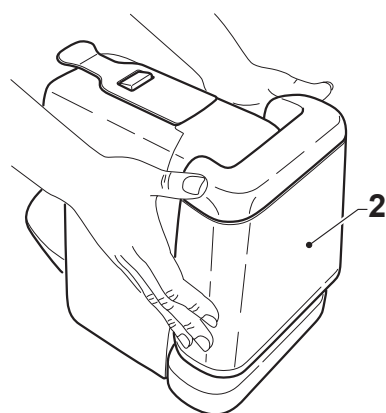
胶囊咖啡机使用说明书  
Espresso Coffee Machine Instructions



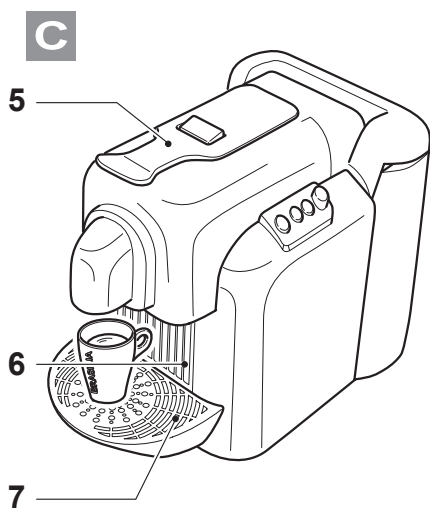
### Fig.2



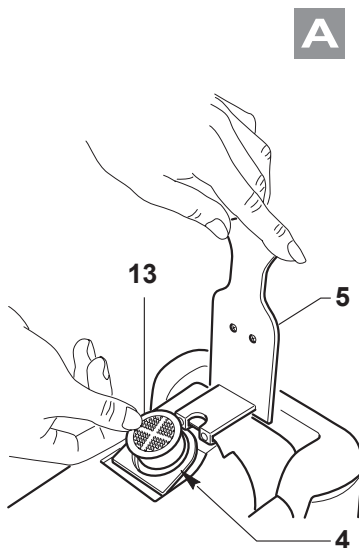
### Fig.3



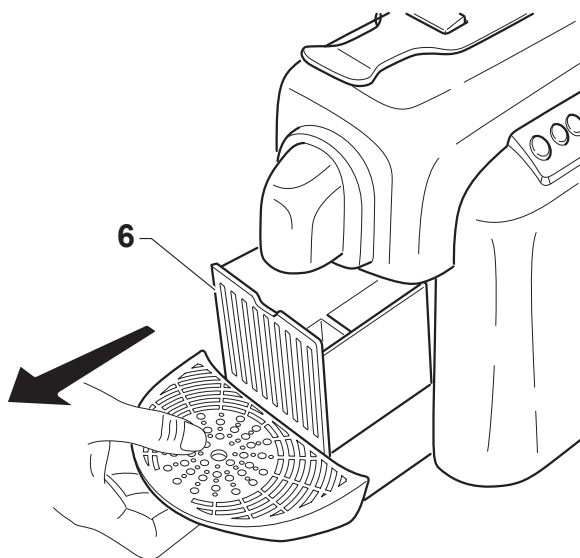
**Fig.4**



**Fig.5**



**Fig.6**



Instructions For Espresso coffee machine for capsule

EN

Instructions For Espresso coffee machine for capsule



## Technical Specifications

-Voltage .....	220-240 V
-Frequency.....	50 Hz
-Input power .....	1200 W
-Dimension (LxPxH).....	205x307x265 mm
-Rated capacity of tank.....	1,1 l
-Weight (approximately) .....	3,4 Kg

## Instructions For Use



*Read these instructions carefully, because they contain important information about safety of installation, use and maintenance. Keep this booklet carefully for consulting when you need it.*

1. Before using, check that the mechanical and other parts of the machine are intact. The body of the machine, tank lid, tank and cartridge-holder unit must never be broken or cracked.  
The sheath and plug of the power cord must never be cracked or broken. If this should occur, disconnect the plug immediately and take the machine to an authorised dealer for checking.
2. It is advisable to power the machine using a contact breaker (RCD) with operating current not higher than 30 mA.
3. Keep the power cord out of the reach of children.
4. Make sure the machine is turned off before plugging it into the wall outlet.
5. The electrical safety of this machine is only assured when it is connected to **an efficient earth system**, in accordance with the safety regulations in force.  
Have this important requirement checked by a qualified person.  
The manufacturer cannot be held responsible for damage caused by lack of an earth.
6. Before plugging in the machine, make sure that the electric power supply is the same as that of the machine.
7. Flying leads or non-approved extensions must not be used for supplying electricity to the machine.
8. Before using the machine, remove all protective films from the outside walls of its body.

9. The first time the machine is used there might be some smell caused by the insulating materials and the heating elements. This disappears after a few minutes.



**Do not leave the machine without water in the tank.**

10. Never immerse the machine, power cord and plug in water or other liquids.
11. Keep the power cord away from the hot parts of the machine.
12. While in operation, the power plug must always be easy to get at in case the machine has to be disconnected.
13. Do not disconnect the machine by pulling the power cord.  
Do not move the machine while it is working.  
Do not use or put the machine out of doors or near water.
14. Always unplug the machine each time after using it.
15. Never remove the guards from the machine for any reason.



**Do not leave the machine in rooms where the temperature is 0°C or lower. If you are planning not to use the machine for a fairly long time, leave no water in the tank**

16. This machine must never be used by children, invalids etc. except under strict supervision, nor in any case by people that have not been properly instructed about how to use it and about the dangers of improper use.
17. Do not use the machine with bare feet and wet hands.
18. Always unplug the power plug before cleaning the machine and before doing any kind of work on it.

## User Safety



- Do not touch the hot parts (cartridge-holder group etc.) immediately after using the machine. Danger of burns.
- While dispensing the drink, beware of possible splashes of hot liquid.
- Do not raise the capsule-holder compartment while dispensing the drink.

## Unpacking And Placement

1. Remove the machine from its packing and check that all the parts are there and are not broken.



**Packing materials (cardboard, cellophane, metal staples etc.) could cut or cause injury if not handled carefully or if used incorrectly; keep them out of the reach of children or unskilled persons.**

2. Place the machine on a flat, even, stable, heat-resistant surface, strong enough to bear its weight.
3. Do not install or use the machine near curtains or other flammable material and do not place anything on top of it during use.
4. Do not place the machine on top of, or close to, additional oven or other equipment that generates heat (for instance, radiators etc.)
5. Make sure there is enough space around the machine for proper ventilation.

## How To Use The Machine

This machine is designed for making espresso coffee (using capsules), solely for household use.

It must not be used for other purposes and must not be altered or tampered with for any reason.

Use for any other purpose is considered improper and therefore dangerous.

The manufacturer cannot be held responsible for any damages resulting from improper, erroneous or unreasonable use.

## Regulations

The manufacture states that the product referred to in this booklet was manufactured in compliance with the Community Directives as shown in the declaration of conformity attached to this booklet.

## Names Of Parts (Fig. 1)



1. Machine body
2. Water tank
3. Tank lid
4. Capsule-holder compartment
5. Lever for opening capsule-holder compartment
6. Drip basin and capsule drawer
7. Removable cup-grid
8. Power plug

## Machine Controls (Fig. 1)

9. Coffee dispensing switch
10. Water heating light
11. Line light
12. ON/OFF switch

## Preparing The Machine

### 1. Water filling

Open the tank lid (3 Fig. 2) and pour cold water into the tank (2 Fig. 2) (maximum 1l), then put back the lid (3 Fig. 2).

### 2. Electric connection



*Before connecting the machine to the electricity make sure that the switch (12 Fig. 1) is in the "OFF" position.*

Connect the machine to the electricity by inserting the plug (8 Fig. 1) in the socket.

### 3. Starting up for the first time

**The first time you use the machine, or if it has not been used for a long time, the following must be done:**

- Remove the tank (2 Fig. 3) from the machine, wash it well with water and put it back in the machine making sure it is fitted in properly.
- Make sure the lever (5 Fig. 4) is down, and then place a cup on the grid (7 Fig. 4).
- Press the switch (12 Fig. 1) and bring it to "ON"; the light (11 Fig. 1) goes on.
- Press the switch (9 Fig. 1) and wait until water starts coming out of the dispensing wand, then press the switch again (9 Fig. 1) again.



**This operation is necessary to make sure the tank is filled.**

#### 4. Starting up the machine

- Make sure there is enough water in the tank (2 Fig. 1); if not, fill in water as explained in section "Water filling".
- Press the switch (12 Fig. 1) to "ON"; light 11 comes on to indicate line switched on.
- Heating of the water in the tank starts automatically
- Wait the reaching of water temperature signalled by the switching-on of warning light (10 Fig.1).

## Making Coffee

1. Open the capsule-holder compartment (4 Fig. 1) by raising the lever (5 Fig. 5).
2. Place a capsule (13 Fig. 5) in the capsule holder (4 Fig. 5).
3. Lower the lever (5 Fig. 5) to "C".
4. Wait the reaching of water temperature signalled by the switching-on of warning light.
5. Place a cup on the grid (7 Fig.4) and press the switch (9 Fig. 1) to "ON" to start dispensing coffee. When the desired amount has been obtained press the switch (9 Fig. 1) to "OFF" to stop dispensing.
6. When dispensing is finished, if you want to dispense more raise the handle (5 Fig. 5) to "A", the capsule is automatically unloaded into the drawer (6 Fig. 4).

***N.B.: After dispensing coffee always leave the capsule-holder compartment (4 Fig.5) open, lever (5 Fig.4) in position "C".***



- The capsule drawer (6 Fig. 6) can hold a maximum of 10 capsules, after which it absolutely must be emptied, pulling it outwards.
- It is advisable to empty the capsules from the drawer (6 Fig. 1) after making 5-6 coffees.

## Cleaning



*Before doing any cleaning, ALWAYS disconnect the plug (8 Fig. 1) from the power socket.*

1. Use a damp cloth to clean the body of the machine (1 Fig. 1) and do not use abrasive detergents.



- *Never immerse the machine body (1 Fig. 1) in water or other liquids.*  
- *Never wash the machine body (1 Fig. 1) in the dishwasher.*

2. Remove the grid (7 Fig. 1) and the basin (6 Fig. 1), empty any capsules and wash them with an ordinary dishwashing detergent.
3. Periodically remove the water tank (2 Fig. 3) and rinse it with clean water then put it back properly in its place.

## Descaling

1. Descale the machine periodically.



**The frequency of this operation depends on the hardness of the water used.**

2. Pour a measure of descaling liquid into the tank (2 Fig. 1) (follow the manufacturer's instructions).



**Only use solutions suited for espresso coffee machines.**

3. Make sure that there is no capsule in the capsule-holder compartment (4 Fig. 1).
4. Lower the lever (5 Fig. 1).
5. Start the machine as explained in the section "Starting up the machine".
6. Place a vessel with a capacity of about 500 cc on the grid (7 Fig. 1).
7. Dispense hot water 3-4 times by pressing button (9 Fig. 1).



**After doing this, repeat the operations described above, using clean water only, to remove residues of the solution from the circuit.**  
**Rinse the tank (2 Fig. 1) well and dry it before using the machine again.**

## Troubleshooting

If the machine is not working properly make the simple checks set out below.  
If the problem is not among those listed or if it still persists, even if you follow the

advice given, contact an authorised dealer.

Problem	Possible Cause	Possible Solution
Machine won't start	Not properly plugged into the power socket.	Make sure it is properly plugged in.
The coffee is too cold.	The machine is not ready.	Wait until the temperature is reached, shown by the indicator light.
Coffee is not being dispensed or it is being done too slowly.	Not enough water in the tank	Make sure that the level of the water in the tank is right and, if necessary, add cold natural water

## Dismantling

1. Taking the machine out of use must be done by authorised staff. The pressure of the water circuit must be fully lowered, the power cord disconnected and any substances potentially harmful to the environment must be disposed of legally and properly.
2. Do not dispose of electrical appliances as unsorted municipal waste, use separate collection facilities.
3. Contact you local government for information regarding the collection systems available.
4. If electrical appliances are disposed of in landfills or dumps, hazardous substances can leak into the groundwater and get into the food chain, damaging your health and well-being.
5. When replacing old appliances with new ones, the retailer is legally obligated to take back your old appliance for disposals at least free of charge.
6. Keep the machine out of the reach of children or unqualified persons.
7. **If the machine is to be disposed as waste, it must be taken to a centre authorised for recycling electrical and electronic equipment (\*). This is to protect the environment and humans from any possible harm. For more information about recycling please contact the offices of the municipality**

concerned, the domestic waste disposal service or the retailer.

**8. Do not dispose of the material in the environment.**



***Label affixed to the machine as identification according to Directive WEEE (2002/96/EC) on Waste Electrical and Electronic Equipment, designed for the European Market.***

## Additional Warnings

1. If the plug of the machine does not fit into the socket have the plug changed by a qualified person who should also make sure that the section of the wires of the plug are suitable for the power absorbed by the machine.  
The use of adaptors, multiple sockets and/or extension cords is not advised.  
If they have to be used it is necessary to use only simple or multiple adaptors and extension cords compliant with the safety regulations in force and to make sure the capacity limit is not exceeded.
2. There are basic rules to be observed when using electrical equipment.  
In particular:
  - Do not touch or use the equipment with wet or damp hands or in bare feet;
  - Children should be supervised to ensure that they do not play with the appliance;
  - Do not pull on the power lead or the equipment itself for unplugging it;
  - Do not allow the equipment be used by children or unskilled persons without supervision.
3. If the machine is broken or not working properly, shut it off and do not tamper with it.  
If repairs are needed, only go to an authorised dealer.  
Non-compliance with the foregoing could affect the safety of the machine.
4. If you decide not to use the machine any more, you must put it out of commission by cutting the power cord, after unplugging the plug from the socket.  
It is also advisable to make safe any parts of the machine that could be a danger, especially for children who might play with the unused machine.
5. **Installation must be done according to the manufacturer's instructions. Improper installation can cause harm to persons, animals or things, for which the manufacturer cannot be held responsible.**

6. To avoid dangerous overheating, it is advisable to unwind the whole power cord and only to use the machine as advised in the "Instructions for Use" section.
7. If the power cord of the machine is damaged it must only be replaced by the authorised dealer.
8. The manufacturer cannot be held responsible for any harm to persons, animals or things arising from improper and unreasonable use of the machine and for repairs done by unqualified persons.

Espresso 胶囊咖啡机使用说明书



Espresso 胶囊咖啡机使用说明书





## 技术规范

-额定电压: .....	220-240V
-额定频率: .....	50Hz
-额定功率: .....	1200W
-水箱容量: .....	1.1 L
-净重: .....	3.4 kg
-尺寸: .....	307*205*265 mm

## 使用说明

1. 在使用前，检查机器和零部件完好无损。机身，水箱盖，水箱和底座装置没有被损坏过，或者有裂缝。电源线护套与插头不得出现裂缝或破损。如果出现这种现象，应该立即断开插头，把机器拿到指定经销商进行检查
2. 建议使用一个触断器（RCD）启动机器，工作电流不超过30mA
3. 电源线应远离孩子
4. 确保在插入壁式电源插座前机器是关闭状态
5. 安全用电时则仅在连接有效的接地系统时确保。这个重要要求是由有特定人员审核的。因未接地造成的损坏，制造商不承担责任
6. 在接通机器前，确保电源适用于机器
7. 机器供电不得使用跨线或未经批准的延长线
8. 在使用该机器前，移走机器外面所有的保护膜
9. 第一次使用该机器时，可能会有一点气味，这是由绝缘材料和发热器引起的，将会在几分钟后消失



**切勿使机器水箱处于无水状态**

10. 切勿把机器，电源线和电源插头浸入水中或其他液体中
11. 保持电源线远离机器热部件
12. 机器运行时，电源插头必须置于易触及的部位便与断开机器
13. 断开电源时候，切勿拔电源线
14. 在使用机器后切断电源
15. 不要以任何理由移掉机器的保护



**切勿在户外或近水区使用或放置机器**

**不要把机器放置于温度在0度或者0下的室内。如果你打算很长时间不使用机器，  
则需清除水箱中的水**

16. 在缺乏严格监督的情况下，此机器不得由儿童或残疾人操作，另外在没有适当的使用方法指导下，不得操作机器
17. 切勿在赤脚和手湿时使用机器
18. 在清理机器前拔掉电源和没有任何操作下才可拔去电源线



**- 请勿在使用结束后立即触摸机器发热部分，有烧伤危险。**

**- 在泡制饮料时请注意液体喷溅可能造成的危险。**

**- 切勿在泡制饮料时抬起酿造组手柄。**

## 安全拆包及放置

1. 从包装中拿出机器，检查所有部件都在以及是否破损
2. 把机器置于平坦、均匀，能够承受其重量的耐热表面
3. 切勿在靠近窗帘或者别的易燃材料边安装或者使用机器；使用过程中，在机器上面不要放任何东西
4. 切勿把机器置于（或靠近）烤箱或其它发热设备（如散热器）顶部
5. 确保机器周围空气的流通

## 机器的使用

机器适用于意式特浓咖啡（胶囊），仅供家庭使用。

不能用做其他用途，用做其他用途时候可能导致危险。

不能以任何理由改变或损坏。

生产商对于不当、错误或过分使用所造成的危险不承担责任。

## 规则

制造商声明，本手册所述产品均依据本手册所符合性声明所示的欧盟指令进行生产

## 部件名称 (Fig. 1)

- |        |           |
|--------|-----------|
| 1. 机身  | 7. 积水盒盖   |
| 2. 水箱  | 8. 电源线    |
| 3. 水箱盖 | 9. 工作开关   |
| 4. 胶囊槽 | 10. 预热指示灯 |
| 5. 手柄  | 11. 工作指示灯 |
| 6. 丢弃盒 | 12. 电源开关  |

## 准备使用

### 1. 加水

打开水箱盖(3 Fig. 2)，加入冷水（最多1.5升）(2 Fig. 2),盖上盖子(3 Fig. 2)

### 2. 通电



- 在通电之前请确保电源开关（12 Fig. 1）在关闭位置

机器插头插入插座后接上电（8 Fig. 1）

### 3. 初次启动

初次使用机器时或是很长一段时间没有使用，操作如下：

- 从机器中移出水箱(2 Fig. 3)，用水洗净然后放回到适当位置
- 确保手柄放下(5 Fig. 4)，把杯子放到积水盒盖(7 Fig. 4)
- 按下电源开关(12 Fig. 1)，显示“ON”亮灯(11 Fig. 1)
- 按下工作开关(9 Fig. 1)等待水从调配杆出来，再次按下工作开关(9 Fig. 1)



**此操作是确保水箱有足够的水**

### 4. 启动机器

- 确保水箱(2 Fig. 1)有足够的水，如果没有，灌水参见章节“加水”的说明
- 按下开关键(12 Fig. 1)显示“ON”；指示灯开启
- 自动加热水箱中的水；指示灯亮(10 Fig. 1)
- 等到水到达一定温度；指示灯亮(10 Fig. 1)

## 煮咖啡

1. 用手柄（5 Fig. 5）打开胶囊槽(4 Fig. 5)
2. 把咖啡胶囊(13 Fig. 5)装入胶囊槽(4 Fig. 5)中
3. 把手柄（5 Fig. 5）降到到水平位置

4. 等水温达到一定值时，工作指示灯(10)（绿灯）亮，表示可以煮咖啡了。
5. 把杯子放到积水盒上（7Fig.4）按下开关（9Fig.5）泡制咖啡，当到达一定量时按下开关（9Fig.5）停止泡制
6. 当咖啡煮好后，扳起手柄（5Fig.5）到一定高度，煮过的咖啡胶囊就会掉到丢弃盒（6Fig.4）中。

**注：泡制之后确保胶囊槽(4Fig.5)是开着的**



- 丢弃盒(6Fig.4)最多可以装下10个胶囊,当其快装满的时候请往外拉，并倒掉。
- 建议在泡制5~6杯咖啡后清空丢弃盒。

## 清洗



- 在清洗之前请把电源切断

1. 用湿抹布清理机身(1Fig.1)，不要用洗涤剂。



- 不要把机器浸在水里或者其它液体里清洗
- 不要把机器放在洗碗碟机里清洗

2. 移出积水盒盖(7Fig.1)和积水盒(6Fig.1)，清空胶囊，用清水洗净
3. 如果近段时间不煮咖啡,可以把水箱(2Fig.3)中的水倒出，把水箱擦拭干净，并放回原来位置。

## 清洗

1. 要定期清除水垢



**此项操作的频率取决于您所在地区水的硬度**

2. 把除垢剂倒入水箱(2Fig.1)中（按照制造商的说明）



**请使用适合本机器的除垢剂**

3. 确保胶囊槽(4Fig.1)里没有胶囊
4. 手柄放平(5Fig.1)
5. 按照“启动机器”章节的说明开启机器
6. 在积水盒盖(7Fig.1)上放置可以容纳500cc的容器

7. 按下开关(9Fig.1)3-4次，释放热水



- 完成之后，请重复以上步骤，使用清水洗净机器内部回路所残留的除垢剂以及污水。
- 擦干水箱 (2 Fig.1)

## 故障及解决

如果机器不能正常工作，请参照以下列表做简单的检查。

如果您遇到的问题不在以下列表中或者故障仍然存在，请联系我们的授权经销商。

故障	可能的原因	解决方案
机器不能正常启动	未插紧电源插头	确保插头与电源充分接触
咖啡温度太低	指示灯绿灯未亮起就开始煮咖啡	请在指示灯绿灯亮起，表示水温达到之后煮咖啡
不能正常出咖啡或者咖啡流出来速度过慢	水箱中水量不足	请确保水箱中有足够的水，如果需要请加水

## 拆除

1. 必须由专职人员拆卸不用的机器。需要切断电源并释放机器内部回路的压力
2. 请不要直接处理未分类的的电器垃圾，请参照当地政府的垃圾分类处理信息
3. 对于更多再循环信息，请联系当地政府
4. 如果电器元件被处理，一些有害物质会渗入地下水，有害健康
5. 替换新的电器元件，零售商会把旧的回收
6. 保持机器在小孩或非正常人员够不到的地方
7. 如果机器要做报废处理，必须到授权部门做电力循环。这是为了保护周围的人和 environment 不受伤害。关于更多的循环信息，请与制造商联系



该标签表示机器符合WEEE规定 (2002/96/EC)，该认证是为欧洲市场设计的电子电器回收环保指令。

## 附加警告

1. 如果插头不适合插座，应由专职人员变换插头，并确保插头电线部分适用于机器电源。不建议使用适配器、复式插头和延长线。若必须使用，则仅能选用符合现行安全法规的简式或复式配器和延长线，并确保不超出能力极限。
2. 当使用电器设备时应遵循基本的规则。特别是：
  - 不要在湿的状况下，湿手或者赤脚使用机器。
  - 切断电源时，切勿拉拔电源线或者设备本身
  - 不允许小孩和非正常人员在没有监管下使用设备。
3. 如果机器破掉或不能正常使用，关掉电源，不要擅自处理。如果有必要修理，应去委托处修理。如违反上述操作会影响机器的安全。
4. 如果你决定不再使用该机器，在从插座上拔掉插头后，使任何有危险的机器部件保持安全是明智的，特别是对于孩子有可能会玩不使用的机器。
5. 安装必须遵照制造商的说明。不正确的安装会伤害人，动物或其它事物，对于这些制造商是不承担责任的。
6. 为了避免温度过高的危险，应展开整个电源线并按照“使用说明”使用
7. 已损坏的机器电源线仅能由指定经销商进行更换
8. 制造商对于由不正确操作或过分操作引起的对人员，动物或其它事物造成的伤害以及有非正常人员修理所导致的不承担任何责任

