

The logo features the word "Kodak" in red, followed by "Personal Picture Maker" in blue. A stylized blue and yellow swoosh with a starburst is positioned above the text. Below this, "200" is in blue, followed by "by LEXMARK" in black, with a red diamond shape under the "A" in "MARK" and a small "TM" trademark symbol.

Kodak **Personal Picture Maker** **200** *by* **LEXMARK**TM

User's Guide for Windows 98/Me

September 2000

Edition: September 2000

The following paragraph does not apply to any country where such provisions are inconsistent with local law: LEXMARK INTERNATIONAL, INC., PROVIDES THIS PUBLICATION "AS IS" WITHOUT WARRANTY OF ANY KIND, EITHER EXPRESS OR IMPLIED, INCLUDING, BUT NOT LIMITED TO, THE IMPLIED WARRANTIES OF MERCHANTABILITY OR FITNESS FOR A PARTICULAR PURPOSE. Some states do not allow disclaimer of express or implied warranties in certain transactions; therefore, this statement may not apply to you.

This publication could include technical inaccuracies or typographical errors. Changes are periodically made to the information herein; these changes will be incorporated in later editions. Improvements or changes in the products or the programs described may be made at any time.

Comments about this publication may be addressed to Lexmark International, Inc., Department F95/032-2, 740 West New Circle Road, Lexington, Kentucky 40550, U.S.A. In the United Kingdom and Eire, send to Lexmark International Ltd., Marketing and Services Department, Westhorpe House, Westhorpe, Marlow Bucks SL7 3RQ. Lexmark may use or distribute any of the information you supply in any way it believes appropriate without incurring any obligation to you. You can purchase additional copies of publications related to this product by calling 1-800-553-9727. In the United Kingdom and Eire, call 0628-481500. In other countries, contact your point of purchase.

References in this publication to products, programs, or services do not imply that the manufacturer intends to make these available in all countries in which it operates. Any reference to a product, program, or service is not intended to state or imply that only that product, program, or service may be used. Any functionally equivalent product, program, or service that does not infringe any existing intellectual property right may be used instead. Evaluation and verification of operation in conjunction with other products, programs, or services, except those expressly designated by the manufacturer, are the user's responsibility.

Lexmark and Lexmark with diamond design are trademarks of Lexmark International, Inc. registered in the United States and/or other countries.

Kodak is a trademark of Eastman Kodak Company.

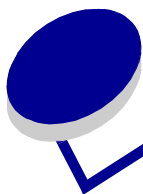
Iomega and Zip are trademarks of Iomega Corporation registered in the U.S. Patent and Trademark Office and in other countries and the Zip 100 brand block is a trademark of Iomega Corporation.

Other trademarks are the property of their respective owners.

**© Copyright 2000 Lexmark International, Inc. and Eastman Kodak Company.
All rights reserved.**

UNITED STATES GOVERNMENT RESTRICTED RIGHTS

This software and documentation are provided with RESTRICTED RIGHTS. Use, duplication or disclosure by the Government is subject to restrictions as set forth in subparagraph (c)(1)(ii) of the Rights in Technical Data and Computer Software clause at DFARS 252.227-7013 and in applicable FAR provisions: Lexmark International, Inc., Lexington, KY 40550.



Contents

Chapter 1: Getting started 1

| | |
|---|----|
| Setting up your printer | 1 |
| Installing the print cartridges | 2 |
| Loading paper | 4 |
| Aligning the print cartridges | 5 |
| Printing a test page | 6 |
| Setting up your printer with Windows 98 | 6 |
| Setting up your printer with Windows Me | 8 |
| Setting up your printer with Windows 2000 | 9 |
| Setting up your printer with a Macintosh | 10 |

Chapter 2: Understanding your printer 13

| | |
|---|----|
| Identifying the parts of your printer | 13 |
| Using the operator panel | 15 |
| Verifying camera compatibility | 15 |
| Inserting a camera card | 16 |
| Using the Quickstart screen | 17 |
| Using Photo and Print Preview | 18 |
| Understanding the Idle Screen | 18 |
| Changing Languages | 18 |

| | |
|--|---------------|
| Chapter 3: Printing photos without a computer | 21 |
| Understanding the Printer Menus | 21 |
| Choosing a paper type from the operator panel | 22 |
| Choosing a paper size | 23 |
| Changing print quality | 24 |
| Choosing the page layout | 24 |
| Selecting photos to print | 26 |
| Using the Photos to Print option | 26 |
| Choosing the number of sets to print | 27 |
| Photo Editing Selections | 27 |
| Cropping photos | 28 |
| Rotating a photo | 28 |
| Selecting a border for your photo | 29 |
| Adding text to your photo | 29 |
| Brightness feature | 31 |
| Auto Enhance | 31 |
| Resetting Defaults | 32 |
| Chapter 4: Using an external Zip drive | 33 |
| Connecting your external Zip drive | 33 |
| Attaching your printer to the Zip drive | 33 |
| Copying photos to your Zip drive | 34 |
| Erasing photos from your camera card | 35 |
| Printing from your Zip disk | 35 |

| | |
|---|---------------|
| Chapter 5: Using your printer with a PC | 37 |
| Step 1: Load the paper | 38 |
| Step 2: Customize the printer settings | 39 |
| Step 3: Print your document | 42 |
| Understanding the Card Reader | 42 |
| KODAK Picture Page Software | 43 |
| Chapter 6: Printing beyond the basics | 45 |
| Printing on both sides of a sheet of paper | 45 |
| Printing handouts | 47 |
| Printing booklets | 48 |
| Printing posters | 50 |
| Chapter 7: Caring for your cartridges | 53 |
| Using your computer for cartridge maintenance | 53 |
| Using your operator panel for cartridge maintenance | 58 |
| Cleaning and preserving print cartridges | 59 |
| Chapter 8: Troubleshooting | 63 |
| Understanding the operator panel error messages | 63 |
| Printing problems without a computer | 65 |
| Printing problems with your computer | 67 |
| General printing problems with or without your computer | 69 |
| KODAK Customer Support Center | 71 |
| Appendix | 73 |
| Installing printer software | 73 |
| Uninstalling printer software for Windows | 73 |
| Uninstalling printer software for Macintosh | 73 |

| | |
|---|-----------|
| Statement of Limited Warranty | 74 |
| Electronic emission notices | 75 |
| Notices | 76 |
| European Community (EC) directives conformity | 76 |
| Energy Star | 76 |
| Power Supply information | 77 |
| Safety information | 77 |
| Index | 79 |

1

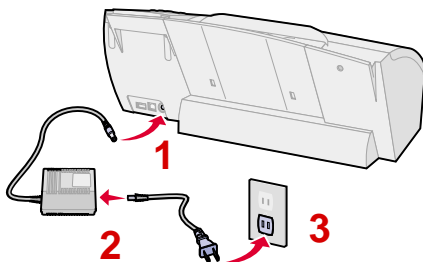
Getting started

Your printer is a general purpose color inkjet printer that provides high quality text and photos. You can use your printer by itself to print photos or connect it to a computer for other printing needs. The following sections will tell you how to set up your printer for Windows 98, Windows Me, Windows 2000 and Macintosh.

Note: To access the on-line User's Guide for **Windows 2000** or **Macintosh**, click on **Read User's Guide** under **Learn** on the CD front end prior to installing your software. This will let you copy and/or view the User's Guide from your computer. After setting up your printer, this hard copy User's Guide applies only to Windows98/Me.

Setting up your printer

- 1 Connect the power supply.



Note: Connection 2, above may not be required in some countries.

Select Language appears on the operator panel display to indicate the power is on.

Note: If you need help identifying the operator panel buttons, see page 15.

2 Press ▲ or ▼ on the operator panel to scroll through the languages.

3 Press **Select** when you see the language you want.

Select Paper Size appears on the operator panel display.

4 Press ▲ or ▼ on the operator panel to scroll through the paper sizes.

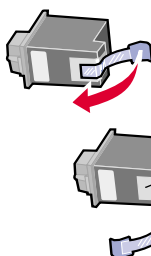
5 Press **Select** when you see the paper size you want.

6 Continue with “Installing the print cartridges” in the following section.

Installing the print cartridges

1 Remove the sticker and transparent tape from the bottom of the print cartridge.

Note: Be sure to remove the tape and install the cartridges one at a time to prevent leaking.

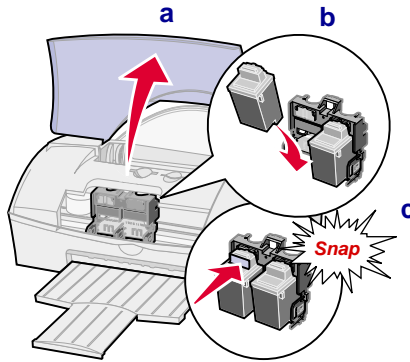


Warning: DO NOT touch the gold contact area of the print cartridges.

- 2 Insert the color cartridge in the left slot and the photo cartridge in the right slot.

Note: To replace the photo cartridge with a black cartridge, see page 54.

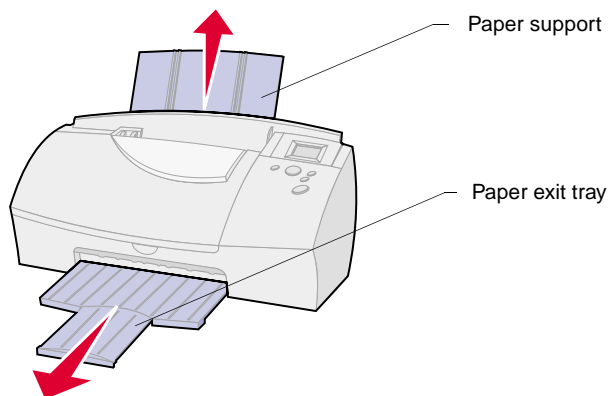
- a Raise the front cover.
- b Insert the cartridges into the print cartridge carrier.
- c Push back firmly on the cartridge until it snaps securely into place.



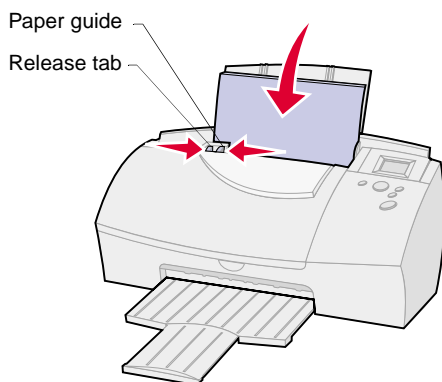
- 3 Close the front cover.

Loading paper

- 1 Pull out the paper support and paper exit tray.



- 2 Place paper against the right side of the sheet feeder with the print side facing you.



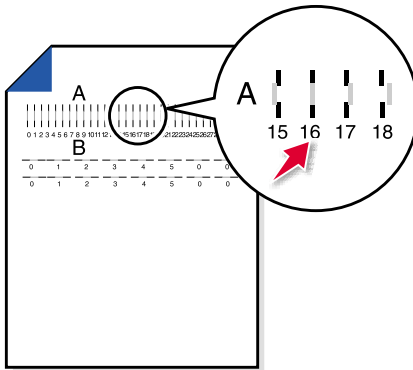
- 3 Squeeze the release tab and the paper guide together, and then slide the paper guide to the left edge of the paper.

Aligning the print cartridges

- 1 Load plain paper in the printer. For help loading paper, see the previous section.
- 2 Press **Menu**.
- 3 Press ▼ until **Utilities** is highlighted, and then press **Select**.
The **Utilities** menu appears.
- 4 Press ▼ until **Align Cartridges** is highlighted, and then press **Select**.
- 5 Press ▼ until **Yes** is highlighted, and then press **Select**.

“Printing Page, Please Wait” message appears.

The test page prints several alignment patterns, depending on the cartridge combination installed. Each pattern has a number under it. The test page that prints is similar to the one shown:



Note: If you have a color and black cartridge combination installed, you will have two more alignment values, C and D. Follow the same instructions as you would for the color and photo cartridge combinations.

- 6 **Choose Values With Straightest Lines** message appears, press **Select** to continue.
- 7 From each alignment group on the test page, find the number under the alignment pattern that comes closest to forming a straight line.

For example, in sample group **A**, the arrow points to the pattern that comes closest to forming a straight line.

The **Align Cartridge Choose Values** screen appears.

- 8** In the **Align Cartridge** dialog box, press ◀ or ▶ to select the numbers from the printed test page that come closest to forming a straight line.
- 9** Press ▼ to highlight **Continue** and press **Select**.
- 10** Press **Menu** to exit the printer menus.

Printing a test page

- 1** Make sure no camera card is inserted.
- 2** Press **Print** to print a test page.

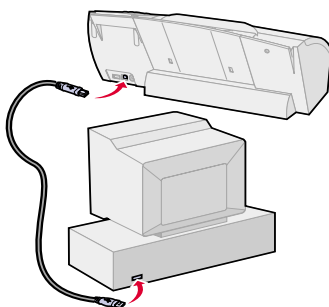
Setting up your printer with Windows 98

Before you begin:

- Prepare your printer for printing. For help, see page 1.
- Make sure you have a USB cable.
- Make sure Microsoft Windows 98 is running on your PC.

To install the KODAK PPM200 printer software:

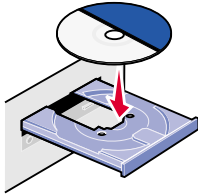
- 1** Connect the USB cable to the computer and printer.



- 2 Click **Next** when the first screen appears.

Note: When you connect your printer to a computer, the Microsoft Windows software on your computer detects new hardware and asks you to navigate through the “Add New Hardware Wizard” with a series of dialog boxes. Complete the following steps to finish this process and reach the **KODAK PPM200 Install Printer Software** screen.

- 3 Place the **KODAK PPM200 Printer Software CD** into your computer's CD-ROM drive.



- 4 Make sure the first option is selected on the second screen, and then click **Next**.
- 5 Select the CD-ROM option on the next screen, and then click **Next**.
- 6 Click **Next** or **Finish** on any subsequent screens.

The **KODAK PPM200** software installation screen appears.

Note: Prior to installing the **KODAK PPM200** software, you can choose other options such as Learn, Registering online or Browse (KODAK Web Site, Technical Support or Personal Picture Maker Supplies).

- 7 Choose from the following install options:
 - **Personal Picture Maker Driver**
 - **KODAK Picture Page Software**
 - **Install All Software**

Note: You must choose **Personal Picture Maker Driver** or **Install All Software** to enable PC printing.

- 8 Follow the on-screen instructions.

Note: If the **KODAK PPM200** screen does not appear, click **Start**, **Run**. Type the letter of your CD-ROM drive followed by **:\\setup** and then click **OK**.

Congratulations!

You have successfully set up your printer for Windows 98.

Setting up your printer with Windows Me

Before you begin:

- Prepare your printer for printing. For help, see page 1.
- Make sure you have a USB cable.
- Make sure Windows Me is running.

- 1 Connect the USB cable to the computer and the printer. For help, see page 6.

Note: When you connect your printer to a computer, the Microsoft Windows software on your computer detects new hardware and asks you to navigate through the “Add New Hardware Wizard” with a series of dialog boxes. Complete the following steps to finish this process and reach the **KODAK PPM200 Install Printer Software** screen.

- 2 Place the **KODAK PPM200 Printer Software CD** into your computer’s CD-ROM drive.
- 3 Make sure the first option, **Automatic search for a better driver**, is selected, and then click **Next**.

Note: **Skip steps 4 and 5 if the following screen does not appear.**

The **Select Other Driver** screen appears.

- 4 Select the **Inkjet Color Printer LEXUSB.INF** file, and then click **OK**.

- 5** Click **Next** or **Finish** on any subsequent screens.

The **KODAK PPM200** software installation screen appears.

Note: Prior to installing the **KODAK PPM200** software, you can choose other options such as Learn, Registering online or Browse (KODAK Web Site, Technical Support or Personal Picture Maker Supplies).

- 6** Choose from the following install options:

- **Personal Picture Maker Driver**
- **KODAK Picture Page Software**
- **Install All Software**

Note: You must choose **Personal Picture Maker Driver** or **Install All Software** to enable PC printing.

- 7** Follow the on-screen instructions.

- 8** If the **KODAK PPM200** screen does not appear, click **Start, Run**. Type the letter of your CD-ROM drive followed by **:\\setup** and then click **OK**.

Congratulations!

You have successfully set up your printer for Windows Me.

Setting up your printer with Windows 2000

Before you begin:

- Prepare your printer for printing. For help, see page 1.
- Make sure you have a USB cable.
- Make sure Windows 2000 is running.

- 1** Connect the USB cable to the computer and the printer. For help, see page 6.

The Microsoft Windows software appears on your computer to detect new hardware.

- 2 Click **CANCEL**.
- 3 Place the **KODAK PPM200 Printer Software CD** into your computer's CD-ROM drive.

The **KODAK PPM200** software installation screen appears.

Note: Prior to installing the **KODAK PPM200** software, you can choose other options such as Learn, Registering online or Browse (KODAK Web Site, Technical Support or Personal Picture Maker Supplies).

- 4 Choose from the following install options:

- **Personal Picture Maker Driver**
- **KODAK Picture Page Software**
- **Install All Software**

Note: You must choose **Personal Picture Maker Driver** or **Install All Software** to enable PC printing.

- 5 Follow the on-screen instructions.
- 6 If the **KODAK PPM200** screen does not appear, click **Start, Run**. Type the letter of your CD-ROM drive followed by **:\\setup** and then click **OK**.

Congratulations!

You have successfully set up your printer for Windows 2000.

Setting up your printer with a Macintosh

Before you begin:

- Prepare your printer for printing. For help, see page 1.
- Make sure you have a USB cable.
- Make sure Mac OS 8.6 or Mac OS 9 is running on your Macintosh computer.

To install the KODAK PPM200 printer software:

- 1 Connect the USB cable to the computer and the printer.
- 2 Place the **KODAK PPM200 Printer Software CD** into your computer's CD-ROM drive.

The **KODAK PPM200 Installer** main screen appears.

- 3 Click **Install** and **Agree**.

The **KODAK License Agreement** screen appears.

- 4 Click **Accept**.

The **KODAK PPM200 Installer** screen appears.

- 5 Click **Install**.

The **KODAK PPM200 Printer Selection** screen appears.

- 6 Follow the on-screen instructions.

Note: Prior to installing the **KODAK PPM200** software, you can choose other options such as Learn, Registering online or Browse (KODAK Web Site, Technical Support or Personal Picture Maker Supplies).

Congratulations!

You have successfully set up your printer on a Macintosh computer.

Note for Macintosh Users:

If your Macintosh computer locks up or freezes while printing, you may need to unplug the printer and turn off your computer. After a few seconds, plug the printer back in and turn your computer back on. The printer driver's spooler may attempt to start printing the job that was in the queue before the computer locked up. This could cause your system to lock up again. To recover from this problem:

- 1 Unplug the printer and turn off your computer.
- 2 Hold down the Shift key and turn on the computer.

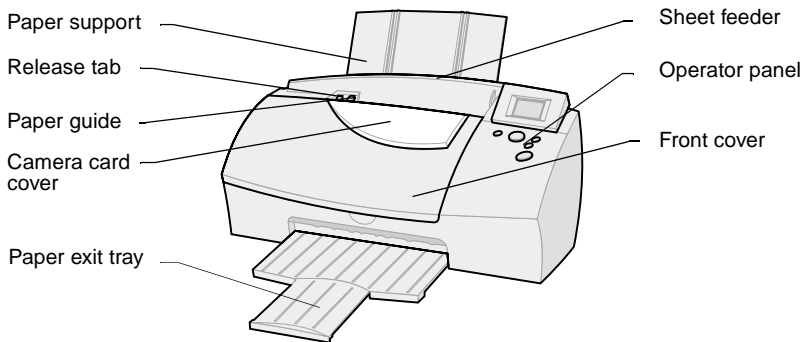
- 3 Press and hold the Shift key until you see the Mac OS screen and the words “Extensions Off”.
- 4 Release the Shift key.
- 5 Locate the **KODAK PPM200** printer icon on your desktop. The inactive printer spooler has an X over it.
- 6 Double-click the icon to open the **KODAK PPM200** dialog box.
- 7 Drag your print jobs to the trash can.
- 8 Restart the computer to enable extensions.
- 9 Plug your printer back in.

2

Understanding your printer

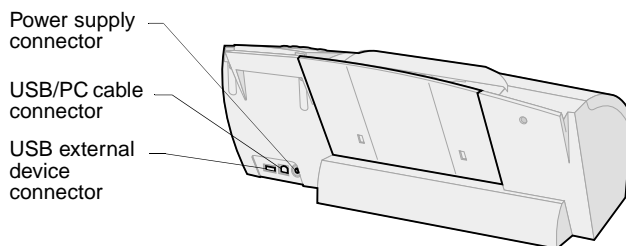
This chapter describes the parts of your printer and their functions.

Identifying the parts of your printer



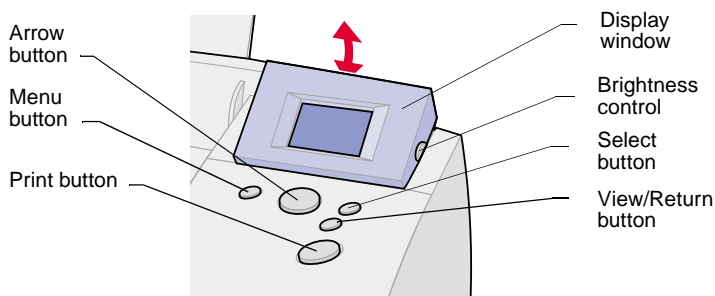
| Use this... | When you want to... |
|-----------------------------|--|
| Paper support | Keep paper straight in the sheet feeder. |
| Release tab, Paper guide | Make sure the paper feeds correctly into your printer. |
| Sheet feeder | Load paper. |
| Front cover | Install or change print cartridges, or clear paper jams. |
| Paper exit tray | Keep paper together after printing. |
| Camera card cover | Insert or remove a camera card. |

| Use this... | When you want to... |
|----------------|--|
| Operator panel | <ul style="list-style-type: none"> • Select setup options. • Select photos for printing. • Select special printing options. • Select photo storage options. • Display and clear status or error messages. |



| Use this... | When you want to... |
|-------------------------------|---|
| Power supply connector | Plug the power supply into the printer. |
| USB/PC cable connector | Attach the printer to a computer. |
| USB external device connector | Attach a Zip drive to the printer. |

Using the operator panel



| Use this... | When you want to... |
|--------------------|---|
| Menu button | Enter and exit the menus. |
| Arrow button | Navigate through the menus and view your photos. |
| Display window | Raise or lower the display to view the menus and your photos. |
| Brightness control | Adjust the brightness or contrast of the display. |
| Select button | Select or cancel a photo, enter a submenu, or accept menu settings. |
| View/Return button | Change from one view to another or return to a previous menu level without saving changes from the current menu option. |
| Print button | Begin printing. |

Verifying camera compatibility

Your printer is compatible with most types of digital cameras that use CompactFlash or SmartMedia camera cards. Visit our Web site at www.kodak.com/go/homeprinting for the latest camera compatibility list.

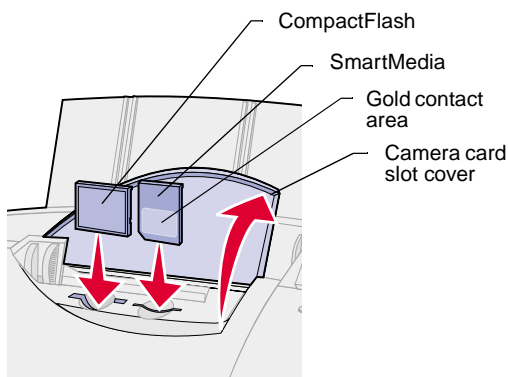
Inserting a camera card

Before inserting a camera card into its card slot, lift the protective cover located on the top of your printer.

Choosing a camera card slot

Your printer recognizes one source for photos at a time and searches for photos in the following order:

- Left slot (CompactFlash)
- Right slot (SmartMedia)
- Optional external devices (see page 33)



Consider the following information before inserting a camera card:

- If the camera card has a gold contact area, make sure the contact area faces the front of your printer.
- If you are inserting a CompactFlash card, make sure the name label faces the back of your printer.
- If you are inserting the SmartMedia card, make sure you do not place it in the CompactFlash card slot.
- If your camera card or storage disk contains photo images, a **Reading Card** message appears in the display window. The number of photos contained on the card is also displayed.

Using the Quickstart screen

When you insert your camera card into your printer or if you are printing photos from an external device, a **Quickstart** screen appears that gives you easy print options. You do not need to enter the **Main Menu** of the printer.

The following table lists the start-up screen options:

| Use the up and down arrows to select... | When you want to... |
|---|---|
| Print All | Print all the photos from your camera card or external device. |
| Print Camera Order | Print the photo selections chosen in your camera. Note: This option is only visible when you have selected photos for printing using your camera. |
| View Photos | View and select photos for printing. |
| Print Index | Print thumbnail size photos. |
| PC Card Reader | View or copy photos to your computer. Note: This option is only visible if you are connected to your computer. See page 42. |
| Change Layout | Change the way your photos are printed on paper. |

To use the **Quickstart** screen:

- 1 Insert the appropriate camera card or connect your external device containing photo images.
The **Quickstart** screen appears.
- 2 Press **▲** or **▼** to scroll through the options until the selection you want is highlighted.
- 3 Press **Select**.

Note: To return to the **Quickstart** screen, remove and reinsert your camera card. This resets or clears all current photo selections.

Using Photo and Print Preview

These screens let you select photos and review them before printing.

To use Photo and Print Preview:

- 1** Press ▼ to highlight **View Photos** from the **Quickstart** screen and then ◀ or ▶ to view and scroll through your photos.
- 2** Press **Select** to choose the photos you want to print.
- 3** Press **View/Return** to preview your selections.

Note: Pressing **View/Return** changes between photo and page preview screens.

- 4** Press **Print**.

Note: The **Page Preview** screens show what your selections will look like, the current settings, and the number of pages to be printed.

Understanding the Idle Screen

An idle screen appears on the display if there is no camera card in the printer. This screen provides you with the current photo printer settings. The display goes blank after approximately 30 minutes. Press any key on the operator panel, or open the printer's front cover to activate the display.

Changing Languages

Choose the **Language** option to change the language that appears on the operator panel display.

To change the Language Default:

- 1 Press **Menu** until you see the **Main Menu**.
- 2 Press ▼ until **Preferences** is highlighted, and then press **Select**.
The **Preferences** menu appears.
- 3 Make sure **Language** is highlighted and press **Select**.
- 4 Press ▲ or ▼ on the operator panel to scroll through and select the language you want.

3

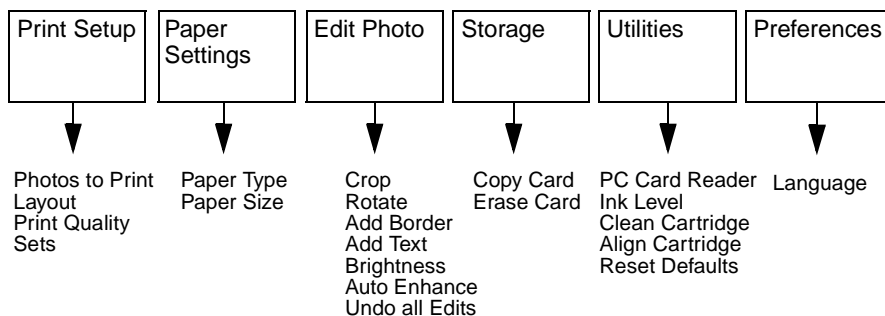
Printing photos without a computer

This chapter describes how to print and edit photos using the printer menus.

Understanding the Printer Menus

If you want to print photos using more detailed options, change print settings, or access other printer functions, go to the printer menu by pressing the **Menu** button.

Menu Categories



To use the Menu:

- 1 Press the **Menu** button.
- 2 Press **▲** or **▼** to scroll and highlight the menu category you want.

- 3 Press **Select**.
- 4 Press **▲** and **▼** to navigate through the sub-menus and choose the option you want.
- 5 Press **Select**.

Notes: The current setting is identified with a check mark next to it. Press **View/Return** to go back one menu level or you can press **Menu** at anytime to return to **Photo and Print Preview**.

The current settings for the highlighted category appear in the bottom right corner of the display.

Choosing a paper type from the operator panel

- 1 Press **Menu** until you see the **Main Menu**.
- 2 Press **▼** to highlight **Paper Settings**, and then press **Select**.
The **Paper Settings** menu appears showing your current selections.
- 3 Make sure **Paper Type** is highlighted, and then press **Select**.
The **Paper Type** menu appears.
Press **▲** and **▼** to select a paper type.

| Choose this Paper Type... | For making... | For best results, use... |
|---------------------------|--|--|
| Photo | <ul style="list-style-type: none">• Ultra glossy photo prints. | <ul style="list-style-type: none">• KODAK Premium Picture Paper. |
| Plain | <ul style="list-style-type: none">• Economical photo prints. | <ul style="list-style-type: none">• Typical xerographic paper. |

| Choose this Paper Type... | For making... | For best results, use... |
|---|--|--|
| Kodak Templates Note: After selecting this option, you will need to select the template number you are using. For a list of Kodak templates, see page 25. | <ul style="list-style-type: none"> Multiple photo layouts on pre-perforated sheets. | <ul style="list-style-type: none"> KODAK Premium Picture Kit for borderless prints. |
| Iron-on transfer (or T-Shirt) | <ul style="list-style-type: none"> Photo prints for iron-on transfer to fabric. | <ul style="list-style-type: none"> Iron-on media. |
| Transparencies | <ul style="list-style-type: none"> Transparencies for overhead projectors. | <ul style="list-style-type: none"> Transparency media. |

We recommend KODAK Premium Picture Paper for the best print quality.

For information about ordering paper, visit the World Wide Web at www.kodak.com/go/inkjet.

Choosing a paper size

- 1 Press **Menu** until you see the **Main Menu**.
- 2 Press ▼ to highlight **Paper Settings**, and then press **Select**.

The **Paper Settings** menu appears showing your current selections.

- 3 Press ▼ to highlight **Paper Size**, and then press **Select**.

The **Paper Size** menu appears.

- 4 Press ▲ and ▼ to select a paper size.

| Select this option... | To choose... |
|-----------------------|---|
| Paper Size | <ul style="list-style-type: none"> • 8.5 x 11 • A4 • 4 x 6 • A6 • Hagaki |

Changing print quality

- 1 Press **Menu** until you see the **Main Menu**.
- 2 Make sure **Print Setup** is highlighted, and then press **Select**.
The **Print Setup** menu appears.
- 3 Press ▼ until **Print Quality** is highlighted, and then press **Select**.
- 4 Press ▲ and ▼ to choose from the following print quality options:
 - Best
 - Better (default setting)
 - Good

Note: Increasing print quality reduces print speed.

- 5 Press **Select**.

Choosing the page layout

- 1 Press **Menu** until you see the **Main Menu**.
- 2 Make sure **Print Setup** is highlighted, and then press **Select**.
The **Print Setup** menu appears.
- 3 Press ▼ until **Layout** is highlighted, and then press **Select**.

The **Page Layout** menu appears. (See the following table for an overview of the page layout options.)

| Press the left or right arrow to scroll and choose... | Then, press the down arrow and then use the left and right arrows to scroll and choose from the following layout options: |
|---|---|
| Print Sizes. | <ul style="list-style-type: none"> • 8 x10 -1 per page • 4 x 6 - 2 per page • 5 x 7 - 2 per page • 3.5 x 5 - 4 per page • 2 x 3 - 8 per page • 1.75 x 2 - 16 per page |
| Kodak Templates. | <ul style="list-style-type: none"> • EK-PH-001 - (1) 8" x 10" (letter size paper) • EK-PH-002 - (2) 5 x 7 prints on letter size paper • EK-PH-003 - (2) 4 x 6 prints on letter size paper • EK-PH-004 - (4) 3.5 x 5 prints on letter size paper • EK-PH-005 - (6) 2.5 x 3.5 prints on letter size paper • EK-PH-009 - (3) 3.5 x 8.5 prints on letter size paper • EK-PH-010 - (1) 4 x 6 on 8.25" x 4.5" paper • EK-PH-011 - (1) 100 x 150 mm on A5 size paper • EK-PH-102 - (2) 127 x 177 mm on A4 size paper • EK-PH-103 - (2) 102 x 152 mm on A4 size paper • EK-PH-104 -(4) 90 x 130 mm on A4 size paper • EK-PH-105 - (6) 57 x 89 mm on A4 size paper |
| Panoramic (only supported in letter and A4 size papers). | <ul style="list-style-type: none"> • Center • Lower Center • Lower • Top • Upper Center |

- 4 Press **Select** to save your selection or **View/Return** to exit the menu without changing the settings.

Notes: The panoramic and border options on your printer are not available when you use Kodak Templates.

You can also use the **Kodak Template** menu settings with regular photo paper. Cut the photos to fit your frame to create standard size, borderless prints.

Selecting photos to print

- 1 Insert the appropriate camera card.
- 2 Press ▼ to highlight **View Photos**.
- 3 Press **Select**.
- 4 Press ◀ or ▶ to scroll through your photos.
- 5 Press **Select** for each photo you want to print.
- 6 Press ▲ or ▼ to increase or decrease the number of copies for each selected photo.

Note: A check mark appears in the lower left corner indicating the photo is chosen. To remove the selection, press **Select** again.

- 7 Press **View/Return**, and then press ◀ or ▶ to review the selections you have chosen.
- 8 Press **Print** to begin printing or **Menu** to select or change other print settings.

Using the Photos to Print option

- 1 Press **Menu** until you see the **Main Menu**.
- 2 Make sure **Print Setup** is highlighted, and then press **Select**.
The **Print Setup** menu appears.
- 3 Make sure **Photos to Print** is highlighted, and then press **Select**.
The **Photos to Print** menu appears.
- 4 Press ▲ or ▼ to choose from the following options:

- **Selected Photo** - Prints photos selected from the operator panel in the full photo view.
- **Print Camera Order** - Prints photos you selected on your digital camera.

Note: **Print Camera Order** only appears if you have selected photos within the camera.

- **Print All** - Prints all photos.
- **Print Index** - Prints small numbered photos with file names.

5 Press **Select**.

Printing starts immediately.

Choosing the number of sets to print

Select **Sets** to print more than one copy of your photo grouping.

- 1** Press **Menu** until you see the **Main Menu**.
- 2** Make sure **Print Setup** is highlighted, and then press **Select**.
The **Print Setup** menu appears.
- 3** Press ▼ until **Sets** is highlighted, and then press **Select**.
- 4** Press ◀ or ▶ to scroll and select the number of sets you want to print.
- 5** Press **Select**.

Photo Editing Selections

To edit photos currently shown on the display, select:

- Crop
- Rotate
- Add Border

- Add Text (You can also modify text when choosing this option, for help, see page 30.)
- Brightness
- Auto Enhance
- Undo All Edits

Notes: Edits are applied only to the current photo displayed in the photo view.

After you edit a photo, **Edited** will appear in the lower right corner of the display in photo view. You will only see the changes you made to your photo when it is printed.

Cropping photos

To crop or select specific areas of photos:

- 1 Press **Menu** until you see the **Main Menu**.
- 2 Press ▼ to highlight **Edit Photo**, and then press **Select**.
The **Edit** menu appears.
- 3 Make sure **Crop** is highlighted, and then press **Select**.
- 4 Press ◀ and ▶ or ▲ and ▼ to move the crop window around the photo.
- 5 Use arrows to position the crop box.
- 6 Press **Select**.

Notes: To undo a previous crop, return to the **Crop** menu and press **Select**. To redo a previous crop, return to the **Crop** menu and use the arrows to reposition the crop box.

You cannot use crop and panoramic view on a photo at the same time.

Rotating a photo

- 1 Press **Menu** until you see the **Main Menu**.

- 2 Press ▼ to highlight **Edit Photo**, and then press **Select**.

The **Edit** menu appears.

- 3 Press ▼ to highlight **Rotate**, and then press **Select**.

The **Rotate** menu appears.

- 4 Press ◀ or ▶ to scroll and select an angle, and then press **Select**.

Notes: Depending on the photo size chosen, the rotated photo may print smaller than the selected size.

Text added to your photo will not rotate with the image.

Rotating TIFF images can take a very long time and is not recommended.

Selecting a border for your photo

- 1 Press **Menu** until you see the **Main Menu**.

- 2 Press ▼ until **Edit Photo** is highlighted, and then press **Select**.

The **Edit** menu appears.

- 3 Press ▲ or ▼ until **Add Border** is highlighted, and then press **Select**.

The **Add Border** menu appears.

- 4 Press ◀ or ▶ to scroll and choose a border selection.

- 5 Press **Select**.

Note: Borders are not printed when using Kodak Templates.

Adding text to your photo

- 1 Press **Menu** until you see the **Main Menu**.

- 2 Press ▼ until **Edit Photo** is highlighted, and then press **Select**.

The **Edit** menu appears.

- 3** Press ▼ until **Add Text** is highlighted, and then press **Select**.

The **Add Text** menu appears.

- 4** Press ◀ or ▶ to scroll and choose a text selection.

- 5** Press **Select**.

Note: Use the **Modify Text** option described in the following section to change the text selections.

Modifying text for your photo

- 1** Press **Menu** until you see the **Main Menu**.

- 2** Press ▼ until **Edit Photo** is highlighted, and then press **Select**.

The **Edit** menu appears.

- 3** Press ▼ until **Add Text** is highlighted, and then press **Select**.

The **Add Text** menu appears.

- 4** Press ◀ or ▶ to scroll and choose **Modify Text**.

The **Modify Text** menu appears.

- 5** Press ▲ or ▼ to highlight and select the text you want to modify.

- 6** Press **Select**.

- 7** Press ◀ or ▶, and then press **Select** to choose each letter or symbol you want.

Note: Press ▼ until **Erase Last** is highlighted, and then press **Select** to erase characters, numbers, or symbols.

- 8** Press ▼ to highlight **Space**, and then press **Select** to add spaces between text.

- 9** Press **Done** to save your text.

Notes: The letters and symbols selected appear in the text bar located at the bottom of the menu screen.

Very long text messages may not print.

To set the text back to its original default settings, select **Reset Text**.

Brightness feature

To adjust the contrast of a photo, choose the Brightness feature from the operator panel.

- 1** Press **Menu** until you see the **Main Menu**.
- 2** Press ▼ to highlight **Edit Photo**, and then press **Select**.
The **Edit** menu appears.
- 3** Press ▼ to highlight **Brightness**, and then press **Select**.
- 4** Press ▲ or ▼ to adjust the level of brightness for your photo, and then press **Select**.

Note: Selecting the **Brightness** option will deactivate the **Auto Enhance** feature if previously chosen.

Auto Enhance

Use Auto Enhance to automatically improve the appearance or quality of your photos.

- 1** Press **Menu** until you see the **Main Menu**.
- 2** Press ▼ to highlight **Edit Photo**, and then press **Select**.

The **Edit** menu appears.

Note: Selecting **Auto Enhance** will deactivate the **Brightness** feature if previously chosen.

- 3 Press ▼ to highlight **Auto Enhance**, and then press **Select**.
- 4 Press ▲ or ▼ to choose from **Off** or **On**, and then press **Select**.

Note: Changes are applied to prints, but are not applied to the display image.

Resetting Defaults

Use Reset Defaults to return to your printer's original factory settings.

- 1 Press **Menu** until you see the **Main Menu**.
- 2 Press ▼ until **Utilities** is highlighted, and then press **Select**.
The **Utility** menu appears.
- 3 Press ▼ until **Reset Defaults** is highlighted, and then press **Select**.
The **Reset Defaults** menu appears.
- 4 Press ▼ until **Yes** is highlighted, and then press **Select**.

4

Using an external Zip drive

Connecting your external Zip drive

You can copy photos from your camera card directly to a Zip drive, which is purchased separately. This lets you reuse your camera card and take more pictures. You can read photo images from these storage devices (with no camera card inserted).

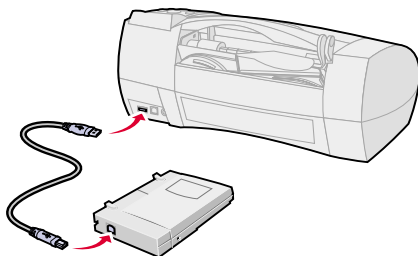
The following external storage device is supported with your printer:

Iomega Zip™ USB attached (100 and 250MB)

To attach a Zip drive directly to your printer, see the following instructions.

Attaching your printer to the Zip drive

- 1 Connect the USB cable to the back of your printer and the external storage device.

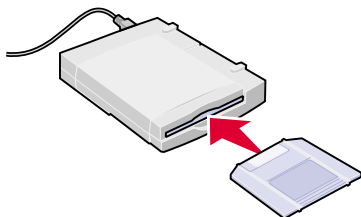


- 2 Connect the power supply to the external storage device, and then plug it into an electrical outlet.

Copying photos to your Zip drive

To copy photos from the camera card to the external storage disk:

- 1 Insert your camera card into the appropriate slot on your printer.
For help, see page 16.
- 2 Insert the storage disk into your Zip drive.



Note: Your printer recognizes one camera card at a time. If two camera cards are installed, only the photos stored on the CompactFlash card are available.

- 3 Press **Menu**.
- 4 Press the ▼ until you see **Storage**, and then press **Select**.

The **Copy and Erase** options appear on the **Storage** menu screen.

- 5 Make sure **Copy** is highlighted, and then press **Select**.

The **Copy Card** menu appears.

- 6 Make sure **Yes** is highlighted, and then press **Select**.

Copying Card appears with a progress bar indicating the status of the copy process. When the progress bar is filled, your photos have been copied to your external storage disk and the Storage menu returns.

Note: Select **Cancel** to stop the copy process.

- 7 Select **View/Return** to go to the Main Menu.

Erasing photos from your camera card

After you copy your photos to an external storage disk, you can erase the photos from your camera card and reuse it.

- 1 Insert the appropriate camera card into your printer. For help, see page 16.
- 2 Press **Menu**.
- 3 Press ▼ until you see **Storage**, and then press **Select**.

Two options, **Copy Card** and **Erase Card** appear on the Storage menu screen.

- 4 Press ▼ to highlight **Erase Card**, and then press **Select**.

The **Erase Card** menu appears

- 5 Press ▼ to highlight **Yes**, and then press **Select**.

The **Erase Card Are You Sure** menu appears.

WARNING: This process erases **all** photos from your camera card.

- 6 Make sure **Yes** is highlighted and press **Select**.

Printing from your Zip disk

Remove all camera cards from your printer before printing from the external storage drive. The printer searches for images on the external storage disk only when no camera cards are installed.

To print photos from your external storage disk:

- 1 Load paper against the right side of the sheet feeder. For help, see page 4.

Note: For best print quality, use KODAK Premium Picture Paper.

- 2 Insert your storage disk into your Zip drive.

The **Quick Start** menu appears.

- 3** Select your print options, and then press **Print**.

Note: For the best print quality, remove each printed photo from the paper exit tray before the next one prints.

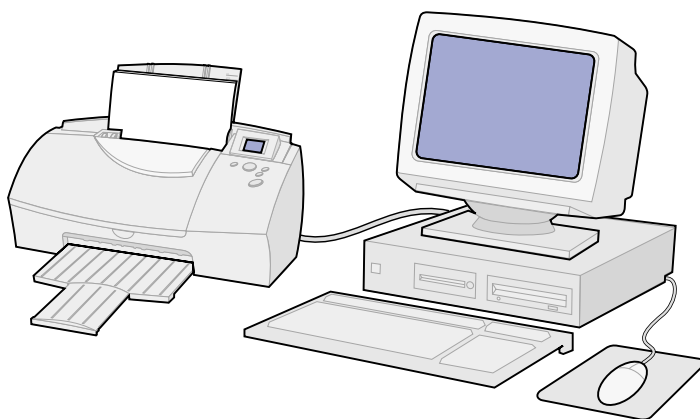
5

Using your printer with a PC

This chapter describes how to use your printer with Windows 98/Me.

Follow these basic steps for printing:

- 1 Load the paper (see page 4).
- 2 Customize the printer settings (see page 39).
- 3 Print your document (see page 42).



Step 1: Load the paper

Load paper against the right side of the sheet feeder. For help, see page 4.

Loading other paper types

| Load up to... | Make sure... |
|---------------------------------------|--|
| 10 photo cards | <ul style="list-style-type: none">• The print side is facing you.• The cards are loaded vertically against the right side of the sheet feeder.• The paper guide is against the side of the cards. |
| 25 sheets of photo papers | <ul style="list-style-type: none">• The glossy side is facing you.• The paper guide is against the side of the photo paper. |
| 10 transparencies | <ul style="list-style-type: none">• The rough side of the transparency is facing you (smooth side down).• The paper guide is against the side of the transparencies. |
| 100 sheets of custom size plain paper | <ul style="list-style-type: none">• The print side is facing you and the paper guide is against the side of the paper.• Your paper size fits within these dimensions:<ul style="list-style-type: none">- Width: 76 - 215.9 mm 3 - 8.5 in.- Length: 127 - 432 mm 5 - 17.0 in. |
| 25 iron-on transfers | <ul style="list-style-type: none">• You follow the instructions on the packaging to load the iron-on transfers.• The paper guide is against the side of the iron-on transfers. |

Step 2: Customize the printer settings

Your printer software includes several applications that help you perform printing tasks easily. One of these applications is called **Printer Properties**.

The **Printer Properties** application has three tabs: **Job Finishing**, **Paper**, and **Document/Quality**. Each tab contains settings related to the operation of your printer and its software.

Opening Printer Properties from an application

You can open **Printer Properties** from almost any application. This lets you change printer settings only for the document you are currently working on in the application. To open **Printer Properties** from an application:

- 1** Open the application's **File** menu.
- 2** Choose **Print** (or **Printer**) **Setup**.
- 3** In the Printer Setup dialog box, click the **Properties**, **Option**, or **Setup** button (depending on the application).
- 4** Change settings as needed. For help, see page 40.

Opening Printer Properties from Windows

When you open **Printer Properties** from Windows, the settings you change apply to all documents, unless you also change them from the application.

- 1** From the Start menu, select **Settings**, and then select **Printers**.
- 2** From the **Printers** folder, right-click the printer icon for your printer.
- 3** Select **Properties** from the sidebar menu.

Note: To help you identify **Printer Properties** and its associated tabs and functions, see page 40.

Kodak PPM200 Printer Properties

| Click the... | When you want to... |
|----------------------|--|
| Job Finishing tab | <ul style="list-style-type: none">• Print handouts.• Print posters.• Print booklets.• Print two-sided documents. |
| Paper tab | <ul style="list-style-type: none">• Select a paper size• Select portrait or landscape orientation.• Set the number of copies to print.• Reverse the printing order of your document pages. (The first page of your document is on top of the stack in the paper exit tray.) |
| Document Quality tab | <ul style="list-style-type: none">• Select color settings for the document type you are printing.• Choose a paper type.• Choose a print quality setting.• Select Web Smoothing when you are printing from the Internet.• Select the default settings. |
| Help button | <ul style="list-style-type: none">• Access the printer driver Help on any tab in the Printer Properties. |

Choosing a Paper Type in Printer Properties

For best print quality, specify the type of paper you are using in your printer.

- 1 Open **Printer Properties**. For help, page 39.
- 2 Select the **Document/Quality** tab.
- 3 Select a **Paper Type** from the following table:

| Select this Paper Type: | To print on this kind of paper: |
|-----------------------------|---------------------------------|
| KODAK Premium Picture Paper | Ultra glossy photo paper |
| Plain Paper | Typical xerographic paper |
| Transparency | Transparencies |
| Iron-On Transfer | T-shirt transfer |

Printing tips

- For best print quality, print with a color and photo cartridge combination.
- When printing photos or transparencies, remove each page as it exits the printer and allow it to dry before stacking.
- When printing iron-on transfers, first verify your image by printing on plain paper.

Printing on custom size sheets

You can print on non-standard size sheets.

- 1 Open **Printer Properties**. For help, see page 39.
- 2 Select the **Paper** tab.
- 3 From the list of Paper Sizes, scroll to select **Custom**.
- 4 Enter the dimensions for your custom paper. For help, see page 38.

Step 3: Print your document

- 1 From your application's **File** menu, click **Print**.
- 2 From the **Print** dialog box, click **OK** or **Print** (depending on the application).

Understanding the Card Reader

You can use your printer to load the pictures on your camera card directly to your hard disk drive.

To use the card reader from the Start-up screen:

- 1 Insert your camera card into the appropriate camera card slot.
- 2 Press ▼ until **PC Card Reader** is highlighted, and then press **Select**.
- 3 Press ▼ until **Yes** is highlighted and press **Select**.

The **PC Card Reader Active** screen appears.

To use the card reader from the Main Menu:

- 1 Press **Menu** until you see the **Main Menu**.
- 2 Press ▼ until **Utilities** is highlighted, and then press **Select**.
- 3 Make sure **PC Card Reader** is highlighted, and then press **Select**.
- 4 Press ▼ until **Yes** appears, and then press **Select**.

The **PC Card Reader Active** screen appears.

Notes: When you activate your card reader for the first time, your computer software detects new hardware.

The card slots on the printer are visible as removable drives on your computer until you exit the card reader

mode from the operator panel. To exit the **PC Card Reader** mode, press **Select**.

The printer cannot print while in PC Card Reader mode. To print a photo that is on your camera card, you must first copy it to another location on your PC.

KODAK Picture Page Software

To install the KODAK Picture Page Software:

- 1** Place the CD into your computer's CD-ROM drive.
- 2** Click install **KODAK Picture Page Software**, and then follow the on-screen instructions.
- 3** After installation is complete, restart your computer.

To open KODAK's Picture Page Software from the **Start menu, click:**

- 1** **Programs**
- 2** **KODAK Picture Page Software**
- 3** **Start Control Center**
- 4** The **Control Center** icon in the system tray, located in the lower right corner of the Windows screen.

Note: All of the folders on your computer that contain pictures are displayed.

- 5** Select the **Help/About tab**, and then select **Help** to learn how to view, edit, and print your pictures.

6

Printing beyond the basics

You can use your printer to print:

- Both sides of a sheet of paper (on this page)
- Handouts (see page 47)
- Booklets (see page 48)
- Posters (see page 50)

Printing on both sides of a sheet of paper

Your Kodak printer lets you print on both sides of a sheet of paper. Besides saving paper, this feature is helpful when you want to print booklets or tablets.

Note: This feature does not work with all paper types. Be sure to check if your paper supports two-sided printing.

Step 1: Load the paper

Load paper against the right side of the sheet feeder. For help, see page 4.

Step 2: Customize Printer Properties for your two-sided print job

- 1 Open **Printer Properties**. For help, see page 39.
- 2 Select the page orientation and size:
 - a Click the **Paper** tab.
 - b Select the appropriate **Paper Size**.

- c Select **Portrait** or **Landscape** orientation.
- 3 Customize the **Printer Properties** for two-sided printing:
 - a Click the **Job Finishing** tab.
 - b Select **Two-sided printing**.
 - c Select a **binding edge**.

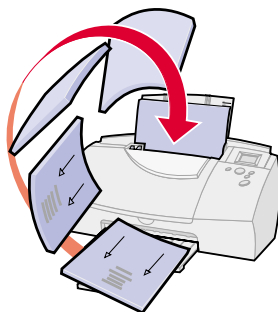
Note: To print paper reloading instructions, select **Print reloading instructions after the first side prints**.

- 4 Click **OK**.

Step 3: *Print your two-sided document*

- 1 From your application's **File** menu, select **Print**. The odd-numbered pages print first.
- 2 When the first side of all your two-sided document is finished printing, your printer software prompts you to reload the paper.

- a Remove the stack of paper from the exit tray.
- b Flip the stack.
- c Insert the stack of paper and instruction page with the printed side facing **away** from you and the arrows pointing down.



- 3 Click **OK**. The even-numbered pages print on the other side of the stack.

To return to single-sided printing:

- 1 From the **Printer Properties**, click the **Job Finishing** tab.
- 2 Make sure **Two-sided printing** is not selected.
- 3 Click **OK**.

Printing handouts

You can conserve paper by printing handouts or multiple page images on a single sheet of paper.

Step 1: Load the paper

Load paper against the right side of the sheet feeder. For help, see page 4.

Step 2: Customize Printer Properties for handouts

You can print your handouts on one side of the paper or on both sides.

- 1 Open **Printer Properties**. For help, see page 39.
- 2 Select the page orientation for the page images.

The page orientation you select in the **Paper** tab reflects the orientation of the page image and **not** the sheet of paper the page image prints on.

 - a Click the **Paper** tab.
 - b From the **Orientation** area, select **Portrait** or **Landscape**.
- 3 From the **Paper Size** area, select a paper size.
- 4 Click the **Job Finishing** tab and select the following options:
 - a Select **Handout**.
 - b Select the **Number of Prints** (page images) to print on a single sheet.
 - c To print a representation of the paper edges for each page image, select **Print Page Borders**.
- 5 To print your handout on one side of the paper, click **OK**. To print your handout on both sides of the paper:
 - a Select **Two-sided printing**.

- b** To print paper reloading instructions, select **Print reloading instructions after the first side prints**.
- c** Click **Long Edge Binding** or **Short Edge Binding**.
- d** Click **OK**.

Step 3: Print your handouts

- 1** From your application's **File** menu, select **Print**.
- 2** From the Print dialog box, click **OK** or **Print** (depending on the application).
 - If you formatted your handouts to print on one side of each page, go to step 3.
 - If you formatted your handouts for two-sided printing, continue with printing the second side of your handouts.
- 3** When the first side of all your handouts is finished printing, your printer software prompts you to reload the paper.

Note: For help reloading and printing two-sided pages for your booklet, see page 46.

To return to normal printing:

- 1** From the **Job Finishing** tab, select **Normal**.
- 2** Make sure **Two-sided printing** is not selected.
- 3** Click **OK**.

Printing booklets

You can print and bundle your document together to make a booklet.

Step 1: Load the paper

Load paper against the right side of the sheet feeder. For help, see page 4.

Step 2: Customize Printer Properties for booklets

- 1 Select the correct paper size in your software application.
You can select from these paper sizes when printing booklets:

- Statement
- Letter
- A4
- A5

- 2 Open the **Printer Properties**. For help, see page 39.
- 3 Click the **Job Finishing** tab.
- 4 Select **Booklet**.
- 5 To print paper reloading instructions, click **Print reloading instructions after the first side prints**.
- 6 Select the number of **Sheets Per Bundle**.

Note: A bundle is any number of sheets of paper folded together. When printing with a heavier paper stock, select a smaller number of **Sheets Per Bundle** to allow for binding considerations.

- 7 Click **OK**.

Step 3: Print and assemble your booklet

- 1 From your application's **File** menu, select **Print**.
- 2 From the Print dialog box, click **OK** or **Print** (depending on the application).
- 3 When the first side of your booklet is finished printing, your printer software prompts you to reload the paper.

Note: For help reloading and printing two-sided pages for your booklet, see page 46.

- 4 Click **OK**. The even-numbered pages print on the other side.

To return to normal printing:

- 1 From the **Job Finishing** tab, select **Normal**.
- 2 Click **OK**.
- 3 Assemble your booklet. For help, see the following section.

Building a booklet

- 1 Take the first bundle from the paper exit tray, fold it in half, and set it aside.
- 2 Fold and stack the rest of your bundles, one on top of the other, until your booklet is complete.



- 3 Bind the bundles together.



Printing posters

You can use the printer software to enlarge your printout to a 4, 9, or 16 page poster.

Note: The poster finishing option is designed to print a single-page as a 4, 9, or 16 page poster.

Step 1: Load the paper

Load paper against the right side of the sheet feeder. For help, page 4.

Note: For the best print quality, use a heavy paper.

Step 2: Customize Printer Properties for your poster

- 1** Open **Printer Properties**. For help, see page 39.
- 2** Click the **Job Finishing** tab.
- 3** Select **Poster**.
- 4** Select your poster size.

The number you select represents the number of pages that make up the height and width of your poster. For example, if you select 4 x 4, your printed poster is four pages high and four pages wide.

- 5** Select **Show Crop Marks** if you want to print markers that show you where to easily trim (crop) the unprinted white space from the edges of the paper.
- 6** Click **OK**.

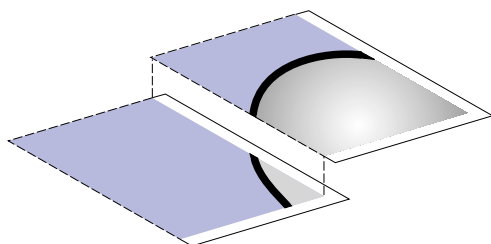
Step 3: Print and assemble your poster

- 1** From your application's **File** menu, select **Print**.
- 2** From the Print dialog box, click **OK** or **Print** (depending on the application).

Note: If you need to reprint a specific page of your poster, see page 52.

- 3** On each printed page, trim the white edges from two adjacent sides.

For example, trim the white edge from the top and left sides of each page.



- 4 Arrange the pages so that every trimmed edge overlaps an untrimmed white edge.
- 5 Tape the backs of the pages together.
- 6 To complete your poster, trim any remaining white edges.

Selecting specific pages to print

You can reprint specific pages of your poster without having to reprint all of them.

- 1 From the **Job Finishing** tab, click **Select Pages to Print**.
- 2 From the **Select Pages to Print** screen:
 - a Click **Select All** to select all the tiles, and then click the tiles you do not want to print.
 - b To quickly select a few tiles to print, click **Remove All** to remove all the tiles, and then click the tiles you want to print.
 - c Click **OK**.
- 3 Print your poster pages.
- 4 Assemble your poster. For help, see page 51.
- 5 To return to regular printing:
 - a From the **Job Finishing** tab, select **Normal**.
 - b Click **OK**.



Caring for your cartridges

This chapter describes how to perform cartridge maintenance. You can install or replace cartridges, view ink levels, clean and align cartridges using your computer, or printer's operator panel. If your printer is connected to a computer, it may be more convenient to do these operations from your computer.

Using your computer for cartridge maintenance

To perform cartridge maintenance from your computer, you must access the **Control Program**.

To open the **Control Program** from the **Start** menu, click:

- 1 **Programs**
- 2 **KODAK PPM200**
- 3 **KODAK PPM200 Control Program**

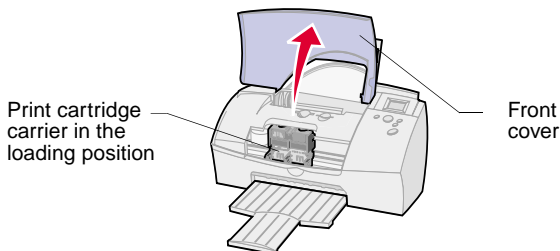
KODAK PPM200 Control Program

| Click the... | When you want to... |
|----------------|---|
| Status tab | <ul style="list-style-type: none">• Monitor the status of your print job.• Cancel your print job.• Print a test page.• View your ink levels. |
| Options tab | Enable/disable various printer software functions, such as Sound Effects and Buffer Mode . |
| Cartridges tab | <ul style="list-style-type: none">• Install or replace print cartridges.• Clean the print nozzles.• Align print cartridges for best print quality.• View cartridge part numbers and order supplies directly from Kodak's Web site. |
| About tab | Find the printer software version and copyright notice. |
| Help button | Access the printer driver Help on any tab in the Control Program . |

Note: You can also access the **Control Program** by double-clicking the **KODAK PPM200** icon on your desktop.

Installing or replacing print cartridges

- 1 Raise the front cover. The print cartridge carrier moves to the loading position unless the printer is busy.

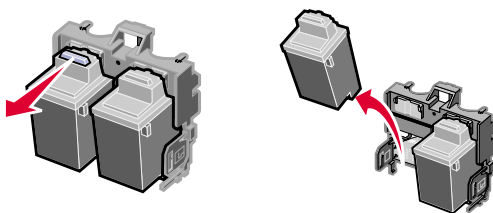


- 2 Remove the old print cartridge. Store it in an air-tight container or dispose of it.

Photo cartridge
CAT 175 4852

Color cartridge
CAT 195 1730

Black cartridge
CAT 136 9511



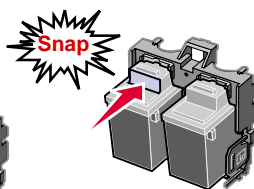
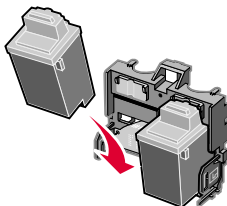
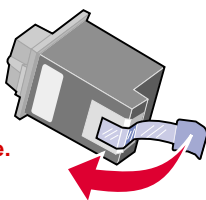
- 3 Match the cartridge cap color to the cartridge carrier color and install the cartridge in the printer:

- a If you are installing a new cartridge, remove only the sticker and the transparent tape from the bottom of the print cartridge.

- b Insert the print cartridge into the print cartridge carrier.

- c Push back firmly on the cartridge until it snaps securely into place.

WARNING:
DO NOT
touch the
gold contact
area of the
print cartridge.



Note: For the best possible photo quality, replace the black cartridge with a photo cartridge and print with a photo and color cartridge combination.

- 4 Close the front cover.
- 5 From the Control Program's **Cartridges** tab, select **Install/Change Cartridge**.
- 6 Select the type of cartridge you installed and click **OK**.
- 7 If you installed a new cartridge, the **Alignment** dialog box displays. Follow the instructions on the **Alignment** screen to complete the cartridge installation. For help, see the next section.

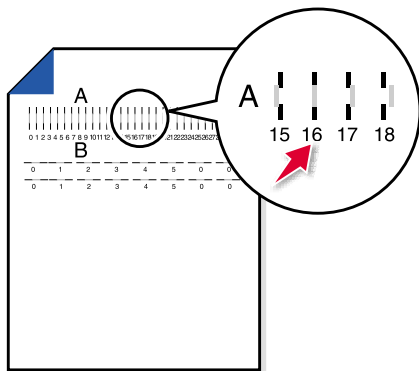
Aligning print cartridges

If the print quality is not satisfactory, a simple cartridge alignment may improve print quality. If print quality is still not satisfactory after aligning the print cartridges, you may need to clean the print nozzles.

- 1 Load plain paper in the printer. For help loading paper, see page 4.
- 2 From the Control Program's **Cartridges** tab, select **Align Cartridges**.

Your printer prints an alignment test page and the **Align Cartridge** dialog box is displayed.

The test page prints several alignment patterns, depending on the cartridge combination installed. Each pattern has a number under it. The test page that prints is similar to the one shown:



Note: If you have a color and black cartridge combination installed, you will have two more alignment values, C and D. Follow the same instructions as you would for the color and photo cartridge combinations.

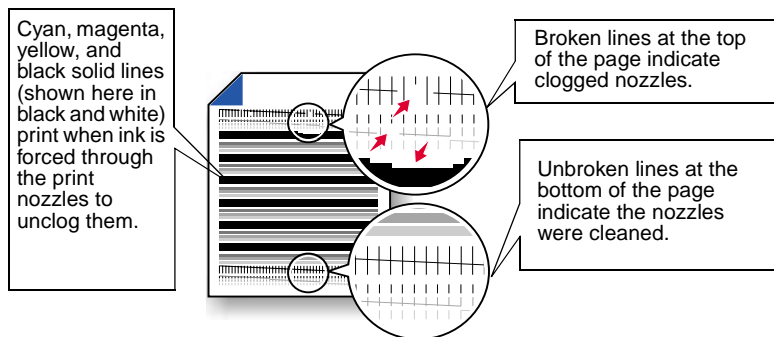
- 3 From each alignment group on the test page, find the number under the alignment pattern that comes closest to forming a straight line.

For example, in sample group **A**, the arrow points to the pattern that comes closest to forming a straight line.
- 4 In the **Align Cartridges** dialog box, enter the pattern numbers from the printed test page that come closest to forming a straight line.
- 5 After you have entered a number for all of the patterns, click **OK**.

Cleaning print nozzles

- 1 Load plain paper in the printer.
- 2 From the Control Program's **Cartridges** tab, select **Clean Print Nozzles**.

The printer feeds a sheet of paper and prints a nozzle test pattern similar to the one shown:



- 3 Compare the diagonal line above the printed bars to the diagonal line below the printed bars.

Look for a break in the diagonal lines above the printed bars. A broken line indicates clogged nozzles.

If the bottom line still has breaks, run the test up to two more times.

- If the print quality is satisfactory after running the test three times, the print nozzles are clean. You do not need to complete the remaining steps.
- If the print quality of both lines is not satisfactory after running the test three times, continue with step 4.

- 4 Remove and reinstall the print cartridge.
- 5 Repeat the nozzle test.
- 6 If the lines are still broken, wipe the print cartridge nozzles. For help, see "Wiping print nozzles and contacts" on page 59.

Using your operator panel for cartridge maintenance

Installing or Replacing Print Cartridges

- 1 Install or replace your print cartridges. For help, follow steps 1 through 4, beginning on page 54.

When you begin a print job, the printer will ask you to select the type of cartridges installed.

- 2 Select the correct option and press **Select**.

Note: If you installed new cartridges, the printer will ask if you want to align them. To align the print cartridges, insert a sheet of plain paper, choose **Yes** from the operator panel, and then press **Select**.

- 3 Follow the alignment process on page 5.

Aligning the Print Cartridges

See page 5.

Cleaning print nozzles

- 1 Press **Menu** until you see the **Main Menu**.
- 2 Press ▼ until **Utilities** is highlighted, and then press **Select**.
The **Utilities** menu appears.
- 3 Press ▼ until **Clean Cartridge** is highlighted, and then press **Select**.
The **Clean Cartridge** menu appears.
- 4 Press ▼ until **Yes** is highlighted, and then press **Select**.

The **Cleaning Cartridge** menu appears with a progress bar showing the status of the cleaning process. When the progress bar is complete, the **Utilities** menu returns.

Note: The printer feeds a sheet of paper and prints a nozzle test pattern similar to the one shown on page 57.

- 5 Follow steps 3 through 5 on page 57.
- 6 If the lines are still broken, wipe the print cartridge nozzles. For help, see “Wiping print nozzles and contacts” on page 59.
- 7 Press **Print** to begin printing or use the **View/Return** button to go to other menu options.

Viewing ink levels from the operator panel

- 1 Press **Menu** until you see the **Main Menu**.
- 2 Press ▼ until **Utilities** is highlighted, and then press **Select**.
The **Utilities** menu appears.
- 3 Make sure **Ink Level** is highlighted, and then press **Select**.
The **Ink Level** menu appears.
- 4 View the ink level.
- 5 Select **Done** when you are finished checking the ink level.

Cleaning and preserving print cartridges

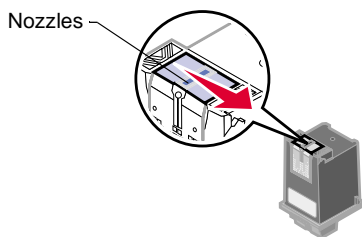
Wiping print nozzles and contacts

If print quality does not improve after cleaning the print nozzles, there may be dried ink on the print cartridge nozzles or the print cartridge contacts.

To wipe the print cartridge nozzles and contacts:

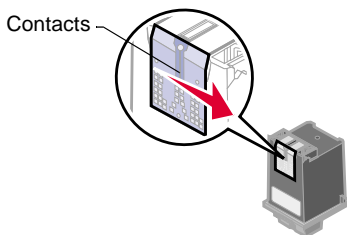
- 1 Remove the print cartridge from your printer. For help, see page 54.

- 2 Dampen a clean lint-free cloth with water and gently wipe the entire gold-colored area, including the nozzles.



WARNING: Wipe the nozzles in one direction so the colors do not mix.

- 3 To dissolve dried ink, hold the damp cloth against the nozzles for about three seconds. Gently blot and wipe dry.
- 4 Dampen another section of clean, lint-free cloth with water and gently wipe the entire gold-colored area, including the contacts.



WARNING: When cleaning the print cartridge, wipe the contacts in one direction.

- 5 To dissolve dried ink, hold the damp cloth against the contacts for about three seconds. Gently blot and wipe dry. Allow the gold-colored areas to dry before you reinsert the cartridge into your printer.

Reinstall the print cartridge and repeat the nozzle test. For help, see page 57.

Preserving print cartridges

To ensure the longest life from your print cartridge and optimum performance from your printer:

- Keep a new print cartridge in its packaging until you are ready to install it.
- If a print cartridge runs out of ink, leave the empty cartridge in the printer until you are ready to replace it. Printing with one of the print cartridge carriers empty may cause printer problems.
- Do not remove a print cartridge from the printer except to replace, clean, or store it in an air-tight container. The print cartridge does not print correctly if removed from the printer and left exposed for an extended period of time.

The printer warranty does not cover repair of failures or damage caused by a refilled cartridge. Kodak does not recommend use of refilled cartridges. Refilling cartridges can affect print quality and cause damage to the printer. For best results, use Kodak supplies.



Troubleshooting

Understanding the operator panel error messages

Cannot read Card

Check your camera card. The card may not have photos on it or it may be damaged.

Carrier Stall

The cartridge carrier inside your printer has stalled. Unplug your printer, clear the paper jam, and then plug your printer back in. For help clearing paper jams, see page 65.

Copy Failed Disk Full

Your external storage disk is full. Insert a new disk to store additional photos.

Copy Failed, Write Protected

The external storage disk you are using is write protected. You must remove write protect from your disk before you copy photos.

Copy Failed No Disk

Your printer does not recognize your external storage drive. Check your external storage drive cable connections to make sure they are secure.

Decode Error

Your printer can't read your camera card. This is often caused by removing your camera card from your camera before it has finished storing the image. It can also be caused by photos that have been previously uploaded to a computer and modified.

Note: If the printer is connected to a computer, try viewing your photos from the card reader mode. For help using the card reader, see page 42.

Erase Failed

The photos cannot be erased from your disk. Make sure your disk is not write protected.

Insert Paper, Press Print

The printer is out of paper. For help loading paper, see page 4.

Install Cartridge

Install a cartridge. For more information, see page 2.

Low Ink

Check your ink levels, it may be time to replace a cartridge. To check your ink levels from your computer, see page 54. To view your ink levels from your printer's display, see page 59.

No PC is Connected

This error message appears when you choose the **Card Reader** option from the operator panel and no computer is connected. **Card Reader** is a function that interacts with your computer. For help, see “Understanding the Card Reader” on page 42.

Paper Jam

Try removing the paper from the sheet feeder. If the paper is lodged too far into the printer and can't be removed:

- 1** Unplug your printer.
- 2** Pull firmly on the paper to remove it. If you cannot reach the paper because it is too far into the printer, raise the front cover and pull the paper out.
- 3** Close the front cover.
- 4** Plug your printer into an electrical outlet.

Resend your document to print.

Printing problems without a computer

My printer will not read my camera card

- Remove your camera card for 15 seconds, and then reinsert.
- There may not be any photos on your camera card.
- Your camera card may not be supported by your printer.

The colors on my printed photos do not appear correctly

- Your cartridge may be running out of ink and you may need to replace your print cartridge. For help, see page 54.
- Check your paper. Photos can print with color variations depending upon the type of paper you have loaded in your printer. For the best print results, use KODAK Premium Picture Paper.

Printed pages have alternating bands of light and dark print (intermittent printing)

Select **Best** print quality setting from your printer's operator panel. For help, see page 24.

My photo prints, but there is too much white space on the paper

- Make sure the paper size selected under **PRINT OPTIONS** matches the paper size loaded in your printer. For help selecting the correct paper size, see page 23.
- You may not have selected enough photos to print on one page. For help, see "Choosing the page layout" on page 24.

Printer prints very slowly

Select a lower print quality setting.

Note: If you are printing photos or your document contains graphics, it may take longer to print than regular text.

Printing problems with your computer

When your printer has a problem, first make sure that:

- The power supply is plugged into the printer and a properly grounded electrical outlet.
- The printer USB cable is securely attached to your computer and printer.

Printer prints very slowly

- Close any open applications not in use.
- Select a lower print quality setting.
- Consider purchasing more memory, or increasing the virtual memory for your computer.

Note: If you are printing photos or your document contains graphics, it may take longer to print than regular text.

Printer is plugged in but doesn't print, or you get a Printer Offline message

Make sure:

- The printer is on and the paper is loaded correctly.
- The USB cable is completely plugged into the printer.
- The printer is set as the default printer.
- The printer is not set up as a card reader. For help, see page 42.
- The print job is not being held or paused in the print queue.

To check the printer status in Windows:

- 1 From the **Printers** folder, double-click the **KODAK PPM200** icon.
- 2 Click the **Printer** menu and make sure no check mark appears next to the **Pause Printing** option.

If these steps have not corrected the problem:

- 1 Turn off your computer.

- 2** Unplug the USB cable from the back of your printer.
- 3** Unplug your printer from the electrical outlet and wait approximately 15 seconds
- 4** Plug your printer back in.
- 5** Reconnect the USB cable to the back of your printer.
- 6** Turn your computer back on.

Test page does not print

Make sure:

- You have removed the tape from the cartridges. For help, see page 2.
- Your print cartridges are properly installed. For help, see page 2.
- The printer is set as the default printer.

Printed pages have alternating bands of light and dark print (intermittent printing)

- Make sure **Enable Buffer Mode** is checked on the **Options** tab of the **Control Program** for Windows.
- Select the **High 1200 x 1200 dpi Print Quality** setting on the **Document Quality** tab of the **Printer Properties**.

The printer settings I selected changed

When you change printer settings from your application, the settings apply only to the specific document you opened with that application. To make the settings apply to all documents, see page 39.

Transparencies or photos contain white lines

- Select the **High Quality 1200dpi** setting.
- Your print nozzles may need cleaning. For help, see page 57.

General printing problems with or without your computer

Printer ejects a blank page after appearing to print

Make sure you have removed the sticker and transparent tape covering the gold area on the print cartridges. For help, see page 2.

Paper misfeeds or pulls multiple sheets through the printer

Make sure:

- You are using a paper recommended for inkjet printers.
- You do not force the paper down into the printer when you load it.
- You do not load too much paper in the sheet feeder. Depending on the thickness of your paper, the sheet feeder can hold up to 100 sheets of plain paper or 25 sheets of **KODAK's Premium Picture Paper**.
- The left paper guide does not cause the paper to bow in the sheet feeder.
- The printer is on a flat, level surface.

Printer has a paper jam

See page 65.

Vertical straight lines are not smooth

To improve the print quality of vertical straight lines in tables, borders, and graphs:

- Test the cartridge alignment. For help, see page 5 or 56.
- Select a higher **Print Quality** setting. For help, see page 24 and 40.
- Clean the print nozzles. For help, see page 57 or 58.

Print is too dark or smudged

Make sure:

- You let the ink dry before handling the paper.
- The **Paper Type** setting matches the paper type loaded in the printer.
- The paper is straight and unwrinkled.
- The print quality setting is appropriate for the paper type. If you are printing on regular paper and have a color and black cartridge combination installed, select the **Draft 300 x 600 dpi** Print Quality setting.

Notes: The **Draft 300 x 600 dpi** Print Quality option will not be available when you install a color and photo cartridge combination.

If print quality still has not improved, you may need to clean the print nozzles. For help, see page 57 or 58.

Colors are not printing correctly

- Your print cartridge may be low on ink. Check the ink level graphic on the **Cartridges** tab of your printer's **Control Program**, or the printer's operator panel menu. For help, see pages 54 and 59.
- Use a different brand of paper. Every paper brand accepts ink differently and prints with slight color variations. For best print results, use **KODAK Premium Picture Paper**.
- Clean the print nozzles. For help, see page 57 or 58.

Glossy photo papers or transparencies stick together

- Remove each page as it exits the printer and allow it to dry before stacking.
- Use a transparency or photo paper designed for an inkjet printer.

KODAK Customer Support Center

Prior to contacting Kodak, please have the following information available so we may serve you faster. **(Located on the back of the printer.)**

Machine Type number _____
Serial number _____
Date purchased _____
Store where purchased _____

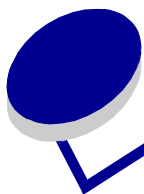
United States and Canada

1-877-774-6837

Or you may contact Kodak through our Web site:**www.kodak.com/go/homeprinting**

Support Center Hours of Operation:

9 AM-9 PM Monday through Friday and
12 PM-6 PM Saturday and Sunday (Eastern Time).



Appendix

In this section, you can find information about:

- Installing printer software
- Uninstalling printer software
- Warranty
- Notices
- Safety

Installing printer software

You can obtain the printer software using the:

- Compact disc (CD-ROM) that came with your printer
- World Wide Web

If your printer software does not install properly, a communications error message appears when you try to print. You may need to uninstall, and then reinstall the printer software. For help see Uninstalling printer software. For help installing your software, see page 6.

Using the World Wide Web

If your computer does not have a CD-ROM drive, you can download the printer software from the World

Wide Web at <http://www.kodak.com/go/ppm200>.

- 1 At KODAK's Web site, select the appropriate driver for your operating system.
- 2 Select **Save to Disk**.
- 3 Download according to your operating system requirements.

Uninstalling printer software for Windows

If your printer software does not install properly, or your printer is not installed to the correct port, you may need to uninstall, and then reinstall the software.

To uninstall the printer software:

- 1 From the **Start** menu, select **Programs**.
- 2 Select **KODAK PPM200**.
- 3 Select **KODAK PPM200 Uninstall**.
- 4 Follow the instructions on your screen.

To reinstall the printer software, follow the appropriate set of instructions from "Installing printer software."

Uninstalling printer software for Macintosh

If your printer software does not install properly, you may need to uninstall and reinstall the software.

To uninstall the printer software:

- 1 Drag the printer icon to the trash can on the desktop.
- 2 Insert the software CD.
The KODAK PPM200 Installer screen appears.
- 3 Click **Install and Agree**.
- 4 From the Easy Install pop-up menu, choose **Uninstall**.
- 5 Select **Complete Uninstall**.
- 6 Click **Uninstall**.

Statement of Limited Warranty

Lexmark International, Inc.,
Lexington, KY

This warranty applies to the United States and Canada. For customers outside the U.S. and Canada, refer to the country-specific warranty information that came with your printer.

KODAK Personal Picture
Maker 200by Lexmark

This Statement of Limited Warranty applies to this product if it was originally purchased for your use, and not for resale, from Lexmark or a Lexmark remarketer including KODAK, referred to in this statement as "Remarketer."

Warranty

Lexmark warrants that this product:

- Is manufactured from new parts, or new and serviceable used parts, which perform like new parts,
- Is free from defects in material and workmanship,
- Conforms to Lexmark's official published specifications, and
- Is in good working order.

If this product does not function as warranted during the warranty period, contact a Remarketer or Lexmark for repair without charge.

If you transfer this product to another user, warranty service under the terms of

this statement is available to that user for the remainder of the warranty period. You should transfer proof of original purchase and this statement to that user.

Warranty Service

The warranty period is 12 months and starts on the date of original purchase as shown on the purchase receipt.

To obtain warranty service you may be required to present proof of original purchase. Warranty service will be provided at a Lexmark designated location.

When warranty service involves the exchange of a product or part, the item replaced becomes the property of the Remarketer or Lexmark. The replacement may be a new or repaired item. The replacement item assumes the remaining warranty period of the original product.

Replacement is not available to you if the product you present for exchange is defaced, altered, in need of a repair not included in warranty service, or damaged beyond repair. Also, such product must be free of any legal obligation or restrictions that prevent its exchange.

Before you present this product for warranty service, remove all programs, data, and removable storage media.

For further explanation of your warranty alternatives and the nearest Lexmark authorized servicer in your area, please call 1-888-774-6837.

Free remote technical support is provided for this product throughout its warranty period. Lexmark offers a variety of extended warranty programs that include an extension of technical support. For products no longer covered by a Lexmark warranty, technical support may only be available for a fee.

Extent of Warranty

Lexmark does not warrant uninterrupted or error-free operation of a product.

Warranty service does not include repair of failures caused by:

- Modification or attachments
- Accidents or misuse
- Unsuitable physical or operating environment
- Maintenance by anyone other than Lexmark or a Lexmark authorized servicer
- Operation of a product beyond the limit of its duty cycle
- Failure to have installed a maintenance kit as specified (if applicable)
- Use of printing media outside of Lexmark's published specifications

- Use of other than KODAK's inkjet cartridges manufactured by Lexmark
- Use of other than Lexmark provided product or component

ALL EXPRESS AND IMPLIED WARRANTIES, INCLUDING THE IMPLIED WARRANTIES OF MERCHANTABILITY AND FITNESS FOR A PARTICULAR PURPOSE, ARE LIMITED IN DURATION TO THE WARRANTY PERIOD. NO WARRANTIES, EXPRESS OR IMPLIED, WILL APPLY AFTER THIS PERIOD.

KODAK DISCLAIMS ALL WARRANTIES, EITHER EXPRESSED OR IMPLIED.

Limitation of Liability

Your sole remedy under this Statement of Limited Warranty is set forth in this section. For any claim concerning performance or nonperformance of Lexmark or a Remarketer for this product under this Statement of Limited Warranty, you may recover actual damages up to the limit set forth in the following paragraph.

Lexmark's liability for actual damages from any cause whatsoever will be limited to the greater of 1) \$5,000 or 2) the amount you paid for the product that caused the damages. This limitation of liability will not apply to claims by you for bodily injury or damage to real property or tangible personal property for which Lexmark

is legally liable. **IN NO EVENT WILL LEXMARK OR REMARKETER BE LIABLE FOR ANY LOST PROFITS, LOST SAVINGS, INDIRECT OR INCIDENTAL DAMAGES, OR OTHER ECONOMIC CONSEQUENTIAL DAMAGES.** This is true even if you advise Lexmark or a Remarketer of the possibility of such damages. Lexmark is not liable for any claim by you based on a third party claim.

This limitation of remedies also applies to any developer of materials supplied to Lexmark. Lexmark's and the developer's limitations of remedies are not cumulative. Such developer is an intended beneficiary of this limitation.

Additional Rights

Some states do not allow limitations on how long an implied warranty lasts, or do not allow the exclusion or limitation of incidental or consequential damages. If such laws apply, the limitations or exclusions contained in this statement may not apply to you.

This warranty gives you specific legal rights. You may also have other rights which vary from state to state.

Electronic emission notices

Federal Communications Commission (FCC) Compliance Information Statement

The KODAK Personal Picture Maker 200 by Lexmark, Type 4103-P01 has been tested and found to comply with the limits for a Class B digital device, pursuant to Part 15 of the FCC Rules. Operation is subject to the following two conditions: (1) this device may not cause harmful interference, and (2) this device must accept any interference received, including interference that may cause undesired operation.

The FCC Class B limits are designed to provide reasonable protection against harmful interference in a residential installation. This equipment generates, uses and can radiate radio frequency energy and, if not installed and used in accordance with the instructions, may cause harmful interference to radio communications. However, there is no guarantee that interference will not occur in a particular installation. If this equipment does cause harmful interference to radio or television reception, which can be determined by turning the equipment off

and on, the user is encouraged to try to correct the interference by one or more of the following measures:

- Reorient or relocate the receiving antenna.
- Increase the separation between the equipment and receiver.
- Connect the equipment into an outlet on a circuit different from that to which the receiver is connected.
- Consult your point of purchase or service representative for additional suggestions.

The manufacturer is not responsible for any radio or television interference caused by using other than recommended cables or by unauthorized changes or modifications to this equipment. Unauthorized changes or modifications could void the user's authority to operate this equipment.

To assure compliance with FCC regulations on electromagnetic interference for a Class B computing device, use a properly shielded and grounded cable such as Lexmark part number 43H5856 for USB attach. Use of a substitute cable not properly shielded and grounded may result in a violation of FCC regulations.

Any questions regarding this compliance information statement should be directed to:

Director of Lab Operations
Lexmark International, Inc.
740 West New Circle Road
Lexington, KY 40550
(859) 232-3000

Notices

Industry Canada Compliance Statement

This Class B digital apparatus meets all requirements of the Canadian Interference-Causing Equipment Regulations.

Avis de conformité aux normes d'Industrie Canada

Cet appareil numérique de la classe B respecte toutes les exigences du Règlement sur le matériel brouilleur du Canada.

European Community (EC) directives conformity

This product is in conformity with the protection requirements of EC Council directives 89/336/EEC and 73/23/EEC on the approximation and harmonization of the laws of the Member States relating to electromagnetic compatibility and safety of

electrical equipment designed for use within certain voltage limits.

A declaration of conformity with the requirements of the Directive has been signed by the Director of Manufacturing and Technical Support, Lexmark International, S.A., Boigny, France.

This product satisfies the Class B limits of EN 55022 and safety requirements of EN 60950.

Japanese VCCI notice

この装置は、情報処理装置等電磁障害防止規制協議会（VCCI）の基準に基きクラスBの電磁気的干渉対策です。この装置は、家庭環境で使用することを目的としています。この装置がうるさくまたはビデオ・テレビ機に近接して使用されると、受信障害を引き起こすことがあります。
取扱説明書に従って正しい取り扱いをして下さい。

The United Kingdom Telecommunications Act 1984

This apparatus is approved under the approval number NS/G/1234/J/100003 for the indirect connections to the public telecommunications systems in the United Kingdom.

Energy Star

The EPA ENERGY STAR Computers program is a partnership effort with computer manufacturers to promote the introduction of energy-efficient products and to reduce air pollution caused by power generation.

Companies participating in this program introduce personal computers,

printers, monitors, or fax machines that power down when they are not being used. This feature will cut the energy used by up to 50 percent. Lexmark is proud to be a participant in this program.


As an Energy Star Partner, Lexmark International, Inc. has determined that this product meets the Energy Star guidelines for energy efficiency.

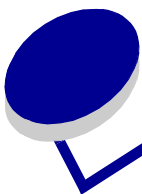
- This product is designed, tested and approved to meet strict global safety standards with the use of specific Lexmark components. The safety features of some parts may not always be obvious. Lexmark is not responsible for the use of other replacement parts.

Power Supply information

If your power supply fails, replace it with the Lexmark replacement part.

Safety information

- If your product is NOT marked with this symbol , it MUST be connected to an electrical outlet that is properly grounded.
- The power supply must be connected to an electrical outlet that is near the product and easily accessible.
- Refer service or repairs, other than those described in the operating instructions, to a professional service person.



Index

A

- About tab 54
- aligning print cartridges 5, 56
- Arrow button
 - locating 15
 - using 15
- Auto Enhance 31

B

- banding 66, 68
- binding options
 - long edge 48
 - short edge 48
- booklets
 - building 50
 - bundling 50
 - printing 48
- borderless prints 26
- borders, adding 29
- brightness control
 - locating 15
 - using 15
- brightness feature 31
- buttons, operator panel 15

C

- cable
 - connections 14
 - USB 14

- camera card
 - choosing 16
 - cover 13
 - erasing photos 35
 - inserting 16
 - slot, locating 16
- camera compatibility, verifying 15
- camera order, print 17, 27
- camera, compatibility list 15
- captions, adding 29
- card reader, PC 17, 42
- Cartridges tab 54
- cartridges, print
 - aligning 5, 56
 - cleaning 59
 - gold contact area 2
 - installing 2, 54
 - preserving 61
 - removing 54
 - replacing 54
- colors, wrong 65
- compatibility list, camera 15
- connecting
 - external device 14
 - Power supply 14
 - USB cable 6
 - USB/PC 14
- Control Program 54
 - About tab 54
 - Cartridges tab 54

- Help button 54
- Options tab 54
- Status tab 54
- Copy Failed Disk Full 63
- Copy Failed Write Protected 63
- copying photos 34
- cover, camera card 13
- crop marks, selecting 51
- crop photos, using 27
- custom size paper, loading 38
- customer support 71

D

- Decode Error 64
- defaults
 - factory, resetting 32
- Display window
 - locating 15
 - using 15
- Document Quality tab 40
- downloaded printer driver, installing 73
- duplexing 45

E

- electronic emission notices 75
- erasing photos 35
- error messages
 - Cannot read Card 63
 - Carrier Stall 63

Copy Failed Disk Full 63
 Copy Failed No Disk 64
 Copy Failed, Write Protected 63
 Decode Error 64
 Erase Failed 64
 Printer Offline 67
 exit tray
 locating 13
 using 13
 external storage device
 connecting 14, 33

F

factory defaults, resetting 32
 FCC statement 75
 frames, adding to a photo 29
 front cover
 locating 13
 using 13

H

handouts, printing 47
 Help button 40, 54
 help, technical support 71

I

idle screen 18
 index, printing 17, 27
 Industry Canada
 Compliance Statement 76
 ink levels, viewing 54, 59
 installing
 print cartridge 54
 printer software 6, 9, 10, 11, 43, 73

installing, KODAK Picture
 Page Software 43
 intermittent printing 66, 68
 iron-on transfers, loading 38

J

Japanese VCCI notice 76
 Job Finishing tab 40

K

KODAK Picture Page
 Software, installing 43
 Kodak templates 25

L

languages, changing 18
 layout
 changing 17
 choosing 24
 loading paper 4
 long edge binding 48

M

Macintosh, printer setup 10
 main menu
 understanding 21
 using 21
 Menu buttons
 locating 15
 using 15
 messages, error
 Cannot read Card 63
 Carrier Stall 63
 Copy Failed Disk Full 63
 Copy Failed No Disk 64
 Copy Failed, Write

Protected 63
 Decode Error 64
 Erase Failed 64
 Printer Offline 67

N

notices
 electronic emission 75
 European Community
 directives conformity 76
 FCC 75
 Industry Canada
 Compliance Statement 76
 Japanese VCCI notice 76
 United Kingdom
 Telecommunications
 Act 1984 76
 nozzles, print
 cleaning 57, 58
 wiping 59

O

operator panel
 buttons 13
 error messages 63
 using 13
 Options tab 54
 ordering replacement,
 power supply 77

P

page layout, choosing 24
 Panoramic 25
 paper
 choosing 22
 loading 4
 size, choosing 23
 types 22

- paper exit tray
 - locating 4, 13
 - using 4, 13
- paper feeder
 - See sheet feeder
- paper guide 13
- paper support 13
- Paper tab 40
- part number, USB cable 76
- PC card reader 17, 42
- photo and print preview, using 18
- photo cards, loading 38
- photo paper, problems 70
- photo papers, loading 38
- photos
 - adding frames 29
 - adding text 29
 - auto enhance 31
 - brightness 31
 - colors wrong 65
 - copying to zip drive 34
 - cropping 28
 - editing 27
 - erasing from the
 - camera card 35
 - layout, choosing 17, 24
 - modifying text 30
 - rotating 28
 - selecting 26
 - storing 34
 - viewing 17
- photos to print option, using 26
- poster
 - assembling 51
 - printing 50
 - selecting specific pages 52
- power connection 14
- power supply 77
 - connecting 1
 - ordering replacement 77
- print all photos 17
- Print button
 - locating 15
 - using 15
- print cartridges
 - aligning 5, 56
 - contacts, cleaning 59
 - gold contact area 2
 - installing 2, 54
 - preserving 61
 - removing 54
 - replacing 54
- print nozzles 59
 - cleaning 57, 58
 - wiping 59
- print quality
 - banding 66, 68
 - changing 24
 - different colors 70
 - missing colors 70
 - smudged 70
 - too dark 70
- Print Sizes 25
- printer driver
 - downloading 73
 - installing 73
 - uninstalling 73
- printer driver Help, accessing 40, 54
- printer parts
 - locating 13
 - using 13
- Printer Properties
 - customizing 39
 - for booklets 49
 - for handouts 47
 - for poster 51
 - for two-sided printing 45
- Document Quality tab 40
- Help button 40
- Job Finishing tab 40
- opening
 - from an application 39
 - from Windows 39
- Paper tab 40
- tabs 39
- printer setup
 - Macintosh 10
 - Windows 2000 9
 - Windows 98 6
 - Windows Me 8
- printer software
 - Control Program 53
 - installing 6, 9, 10, 11, 43
 - Printer Properties 39
 - uninstalling 73
- printer, setting up 1
- printing
 - all photos 27
 - booklets 48
 - camera card order 27
 - from zip drive 35
 - handouts 47
 - index 27
 - on both sides of the
 - paper 45
 - photos 21
 - posters 50
 - selected photos 27
 - sets 27
 - test page 6
 - text on photos 29
 - with a computer 37
- printing problems
 - color quality 70
 - error messages 63
 - intermittent 66, 68
 - missing colors 70
 - paper jam 65
 - paper misfeeds 69
 - with computer 67
 - without computer 65

R

release tab 13
 reloading instructions,
 two-sided printing 46
 removing print cartridge
 54

S

safety information 77
 screen, idle 18
 Select button
 locating 15
 using 15
 select pages to print 52
 selected photos, printing
 27
 sets, printing 27
 setting recommendations
 poster 51
 two-sided printing 45
 setting up, printer 1
 sheet feeder 13
 Sheets Per Bundle,
 selecting 49
 short edge binding 48
 software applications
 Control Program 54
 software applications,
 Printer Properties 39
 software, printer
 installing 6, 9, 10, 11,
 43
 uninstalling 73
 specialty papers
 custom size paper 38
 iron-on transfers 38
 photo cards 38
 photo paper 38
 transparencies 38
 start-up screen, using 17
 Status tab 54
 storage device,
 connecting 33
 storing photos 34

supplies, ordering
 power supply 77

T

technical support 71
 templates, Kodak 25
 test page
 alignment 5, 56
 does not print 68
 nozzle test pattern 57,
 59
 printing 6
 text
 adding to a photo 29
 modifying 30
 transparencies
 loading 38
 problems 70
 troubleshooting
 blank pages 69
 color quality 65, 70
 general 69
 missing colors 57, 70
 operator panel error
 messages,
 understanding 63
 paper sticks together
 70
 printer settings 68
 printing problems 65,
 67
 problems, computer
 67
 two-sided printing
 reloading instructions
 46
 setting
 recommendations
 45

U

uninstalling printer
 software 73

United Kingdom
 Telecommunications
 Act 1984 76
 USB cable
 connecting 6
 part number 76
 USB/PC connection 14

V

View/Return button
 locating 15
 using 15

W

Warranty 74
 Web site, KODAK 15, 71
 Windows 2000, printer
 setup 9
 Windows 98, printer setup
 6
 Windows Me, printer
 setup 8

Z

zip drive
 connecting 14, 33
 copying to 34
 printing from 35
 storing photos 34
 using 34