

## **Siemens Regional Offices (branches )in China**

### **Siemens Ltd., China**

No.7 Wangjing Zhonghuan Nanlu,Chaoyang District, Beijing 100102  
Tel: 0086-010-6476 8888 Fax:0086-010-6472 4912

### **Shenyang Branch**

5F, Kempinski Hotel, No.109, Qing Nian Street,Shen He District, Shenyang 110014, Liaoning  
Tel: 0086-024-2334 1110 Fax:0086-024-2295 0722

### **Jinan Rep. Office**

5F, Shun Hua Yuan Commerical Club, No. 28 Shun Geng Rd. Jinan 250014, Shandong  
Tel: 0086-0531-8266 6088 Fax:0086-0531-8266 0836

### **Qingdao Rep. Office**

Room 705-706, Crown Plaza,Qing Dao, No. 76,Xiang Gang Zhong Rd.,Qingdao, 266071, Shandong  
Tel: 0086-0532-8573 5888 Fax:0086-0532-8576 9963

### **Chengdu Branch**

18/17F,Chuanxin Mansion 18,Sec.2,Renmin South Rd, Chengdu 610016, Sichuan  
Tel: 0086-028-8619 9499 Fax:0086-028-8619 9352

### **Wuhan Branch**

19-20F,Jian Yin Tower No.709 Jianshe Avenue, Hankou 430015, Hubei  
Tel: 0086-027-8548 6688 Fax:0086-027-8548 6777

### **Xi'an Rep. Office**

28F,Hi-Tech International Business Center No.33,Keji Rd.,Gaoxin District, Xi'an 710075, Shanxi  
Tel: 0086-029-8831 9898 Fax:0086-029-8833 8818

### **Shenzhen Branch**

9F Han Tang Building OCT(overseas Chinese Town), Shenzhen 518053, Guangdong  
Tel: 0086-0755-2693 5188 Fax:0086-0755-2693 4476

### **Guangzhou Branch**

16-17F,Dongshan Plaza 69,Xianlie Zhonglu, Guangzhou 510095, Guangdong  
Tel: 0086-020-8732 0088 Fax:0086-020-8732 0077

### **Nanning Rep. Office**

No.109,Min Zu Rd.Investment Building,Room 908, Nanning 530022, Guangxi  
Tel: 0086-0771-552 0700 Fax:0086-0771-552 0701

### **Fuzhou Rep. Office**

21F,China Bank Building, No.136,Wu Si Rd. Fuzhou 350003, Fujian  
Tel: 0086-0591-8750 0888 Fax:0086-0591-8750 0333

### **Kunming Rep. Office**

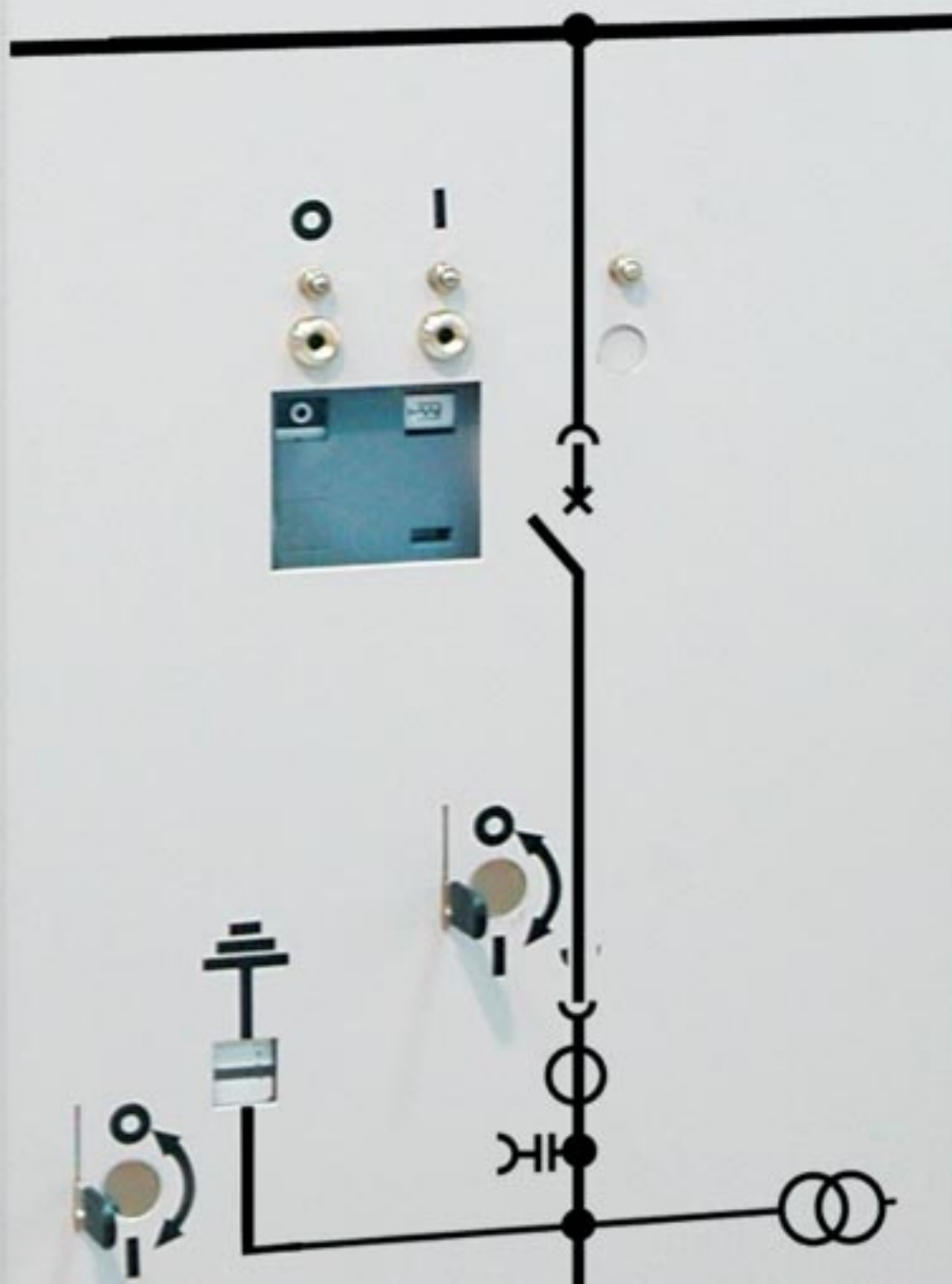
27F,Bank Building, No.395, Youth Rd. Kunming 650011, Yunnan  
Tel: 0086-0871-315 8080 Fax:0086-0871-315 8093

### **Chongqing Rep. Office**

Rm. 08A-11,18F, Metropolitan Business Mansion 68, Zourong Rd. Yuzhong District, Chongqing 400010  
Tel: 0086-023-6382 8919 Fax:0086-023-6370 2886

## **Siemens Switchgear Ltd., Shanghai (SSLS)**

No.298, Tianning Rd.,Minhang, Shanghai,China  
Post Code: 200245  
Tel: 0086-021-2403 0000  
Fax:0086-021-6492 4606  
Order Number: JS016  
Print Quantity: 2000  
Print Date: 2006.10  
SSLS-JS016-A



## Air-Insulated Medium-Voltage Switchgear NXAIR S

Compact and Reliable in accordance with GB3906, DL404 (insulation), IEC 62271-200

# New Standards for the Market

Since the introduction of the type series NXAIR in 1998, Siemens has redefined the performance features of switchgear. Their extraordinary operational reliability due to modular design, their personal safety thanks to arc-fault tested construction, and the optimal operating symbols have set a standard on the market. Therefore, power supply utilities as well as industrial enterprises trust in NXAIR family when maximum reliability and quality is requested. And they are in best company, as proved by a basis of approx. 18,000 panels installed world-wide in power distribution systems - sometimes in most adverse operating conditions. To continue with this success also in the future, the complete NXAIR family has been revised and adjusted to today's requirements.



# Prepared for the Future with IEC 62271-200

In autumn 2004, the existing switchgear standards for factory-assembled, metal-enclosed switchgear were redefined and documented in IEC 62271-200. Siemens has reacted to these changes by developing the SION vacuum circuit-breaker - one of twelve awarded corporate "inventions of the year" 2005.

Compact design in combination with high reliability predestined this circuit-breaker to application in NXAIR S switchgear. This made it possible not only to introduce one of the first switchgear types certified to the new standards on the market, but also to make them more compact in order to obtain e.g. lower building costs for the user, thus making the building more cost-efficient.

Air-insulated medium-voltage switchgear NXAIR S is factory-assembled, type-tested, metal-enclosed switchgear for indoor installation according to GB3906, DL404 (insulation), IEC 62271-200(former IEC 60298).

## Technical specs

Service continuity category	LSC 2B (metal-clad)
Partition class	PM (metal)
Internal arc classification	IAC A FLR, $I_{sc}$ , t
IAC	Internal arc classification
A	300 mm distance of indicators for test
F	Indicators for test at the front
L	Indicators for test at the side
R	Indicators for test at the rear
$I_{sc}$	40kA
t =	1 s

In this way, NXAIR S switchgear is applicable without restrictions for wall-standing or free-standing arrangement in electrical service locations up to the maximum short-circuit current

# With NXAIR-Family, You Are on the Safe Side

## Peace of Mind

For power supply companies and industrial enterprises, the certification of the NXAIR family to the new standard offers very practical advantages: Smooth operation, exemplary availability and optimal security.

- Factory-assembled, type-tested switchgear to GB3906, DL404 (insulation) and IEC 62271-200
- Modular construction with pressure-resistant partitions (switching-device, connection, busbar and low-voltage compartments are exchangeable)
- Principle of bushing-type current transformers (combination of post insulator, current measurement, partition)
- More than 300,000 air-insulated switchgear panels of Siemens in operation world-wide
- Use of maintenance-free vacuum circuit-breakers
- Vacuum circuit-breaker and earthing switch type-tested in the panel
- Pressure-resistant partitions
- Use of standard components available world-wide
- Quality assurance to DIN EN ISO-9001



## Saves Lives

All switchgear types of the NXAIR family are approved for the internal arc classification IAC A FLR, service continuity category LSC 2B, partition class PM. Thus they are universally applicable, meeting the highest requirements regarding personal safety.

- All operations behind closed high-voltage door
- Metal enclosure and compartmentalization
- High-voltage door locked
- Switchgear with internal arc classification IAC A FLR (accessible from front, side and rear) for all short-circuit currents and arc-fault duration of 1s
- Service continuity category LSC 2B (separate compartments for busbar, connection and switching device)
- Partition class PM (metal-clad) in pressure-resistant design
- Unambiguous switch position indicators and control elements on the high-voltage door
- Use of vacuum circuit-breakers
- Standard degree of protection IP4X
- Positively driven shutters
- Logical mechanical interlocking system

Technical data		NXAIR S	
Rated			
-voltage	kV	7.2	12
-frequency	Hz	50	50
-short-duration power-frequency withstand voltage	kV	32	42
-lightning impulse withstand voltage	kV	60	75
-short-circuit breaking current.max	kA	40	40
-short-time withstand current, 4s.max	kA	40	40
-short-circuit making current.max	kA	100	100
-peak withstand current.max	kA	100	100
-normal current of busbar .max	A	3150	3150
-normal current of feeders.max	A	3150	3150
Width			
≤630 A, ≤31.5 kA	mm	600	600
1250 A	mm	800	800
2000 A	mm	800	800
2500 A	mm	800	800
3150 A	mm	1000	1000
Height	mm	2150	2150
Depth	mm	1350 <sup>1)</sup>	1350 <sup>1)</sup>
	mm	1450 <sup>2)</sup>	1450 <sup>2)</sup>

1) ≤31.5 kA, ≤2500 A

2) 3150 A, 40 kA

Product range	NXAIR S
Circuit-breaker panel	
Disconnecter panel	
Metering panel	
Contactor panel	
Fixed-mounted switch-disconnector panel	
Bus sectionalizer	

# With NXAIR-Family, You Are on the Economic Side

## Increases Productivity

Functions such as modular construction, type tests of the circuit-breaker inside the switch-gear, selective shutdown of a possible arc fault, confinement of an internal arc to the respective compartment, and therefore maximum operational reliability provide for uninterrupted operation and a considerable increase of productivity.

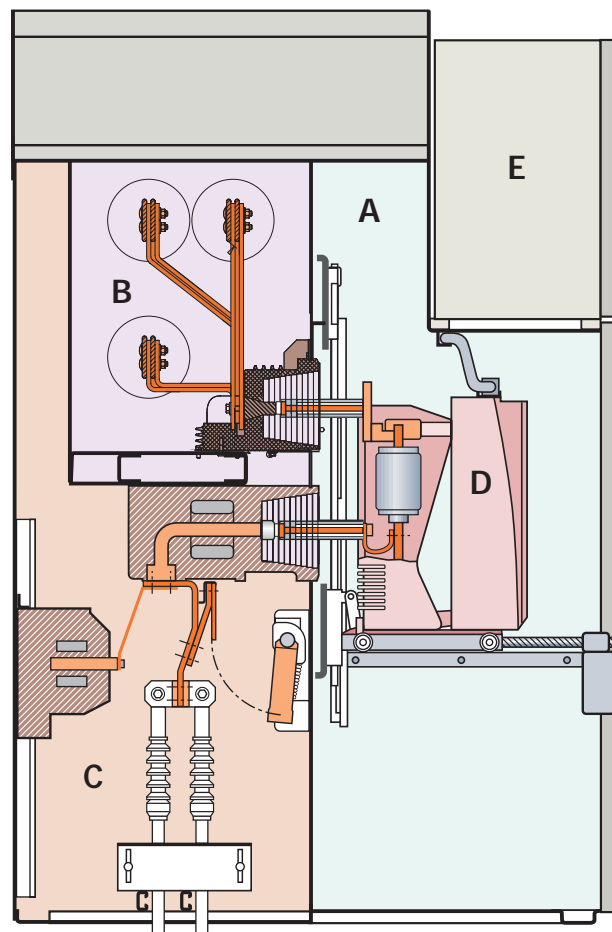
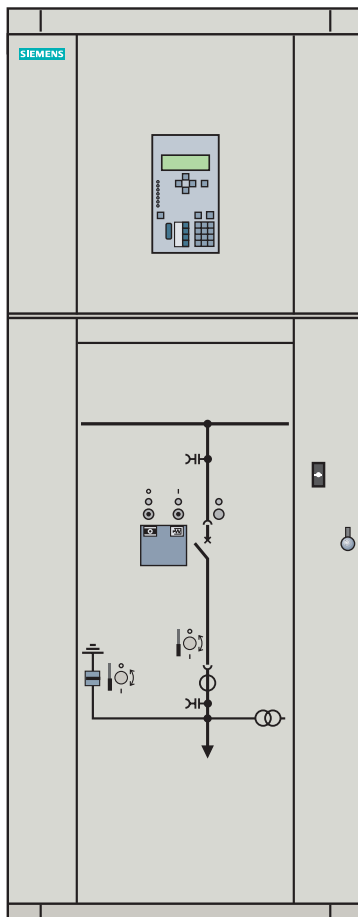
- Modular panel design enables fast replacement of the respective compartments
- Selective shutdown of an arc fault possible
- Service continuity category LSC 2B (separate compartments for busbar, connection and switching device)
- Cable testing without isolating the busbar
- Principle of bushing-type current transformer
- Confinement of internal arc to respective compartment
- Use of maintenance-free vacuum circuit-breakers
- Control cables in metallic wiring ducts



## Customer Orientation

The compact design of the NXAIR family by using the new circuit-breaker series SION pays off twice for the operator. On the one hand, the building costs can be reduced, and on the other hand, the maintenance-free circuit-breakers and the modular design enable continuous operation to a large extent without expensive shutdown times.

- Maintenance-free vacuum circuit-breakers
- Maintenance intervals of the switchgear > 10 years under normal conditions
- Interruption of operation reduced to a minimum by modular design and logical mechanical interlocking system
- Selective shutdown of a possible arc fault is possible
- Minimum space requirements due to compact design



A: Switching-device compartment  
B: Busbar compartment  
C: Connection compartment

D: Withdrawable circuit-breaker  
E: Low-voltage compartment