

S-250 电脑扫描灯说明书

Instructional Manual of S-250 Moving Head

- ◆ 特强光效-德利亚 S-250 的光效远远超出同功率的其它灯具 30%
- ◆ Super strong light effect – Deliya S-250 has light effect 30% higher than the same power

它的光学系统经过重新改进设计，采用了计算机设计技术及先进的光学计算方法。特殊透镜经过专门处理严格挑选，以确保光束的精确投射。通过两块高质量的透镜，将光源发出的光集中：增强并全部发挥利用，比其它厂家电脑灯的光输出量提高了 30%，德利亚 S-250 电脑灯光源选用 Osram HMI1200 汽泡，该型灯泡为灯光设计者及检测人员所称道，并在全中国多家电视台使用，高效的光学系统将灯泡的光效提高了近 6 倍，灯泡寿命超过 750 小时，为用户节省了经费。除了高光效外，专业的光学系统还使得光照度十分均匀，在被照面上每一点都相同，不存在亮斑或暗区的现象。

Its optical system has undergone further improvement and design, and adopts computer design technology and advanced optical computing method. The special lens has been strictly treated and selected in order to ensure the accurate projection of light beam. By means of two high quality lens, the lamp gathers, increases and fully utilizes the light from light source, producing light output 30% higher than the same kind of products made by other manufacturers. The light source of Deliya S-250 moving head adopts PHILIPS MSD discharge lamp. The type of lamp, acclaimed by lighting designers and detectors, and the high efficient optical system enables the lamp to have 6 times light effect and service life to exceed 2000 hours, saving energy. Apart from high light efficiency, the professional optical system is able to produce quite uniform illuminance, and all the points on the lighted surface have the same effect, without phenomenon of luminous spots or dark zones.

- ◆ 专业功能
- ◆ Professional functions

德利亚 S-250 电脑灯的色彩和图形变化万千，为国际灯光设计师提供了全新的应用领域。

1、150 种颜色

1. Plentiful colors

德利亚 S-250 特共有 150 种颜色。颜色盘上有 7 种不同颜色的高效镀膜色片和一个空缺（为白光），颜色丰满，色温准确。十分注意镀膜色片的质量，每一块都经过精心挑选，严格控制误差，以确保不同灯具同时使用时，颜色仍保持一致。除去白光外，基本色为黄、红、橙、绿、蓝、紫 和粉色。叠加矫正色片后，还可获得另外 100 种以上不同颜色光。还为广大用户提供丰富的镀膜色片选择，满足他们的创作、使用要求。更突出的是色片盘可以任意速度旋转，产生美妙的颜色旋转效果，高速旋转色盘时，为绚丽的彩虹效果。

Deliya S-250 has 4 kinds of super coated color chips and 1 white light, and they are

plentiful in color and precise in color temperature. Quality of coated color chips is especially highlighted, each one is carefully selected, and error is strictly under control so as to maintain consistent color while using different lamps at the same time. What is most prominent is that a color chip plate can rotate at a random speed, generating wonderful effect of color rotation. When the plate is rotating at high speed, the effect of colorful rainbow can be demonstrated.

2、独有双图形板（可调换）

2. Exclusive gobos

德利亚 S-250 使用旋转图形板加固定图形板，产生令人惊叹的空间几何图形效果。共有 25 种图形效果变化，4 块旋转图形板每块均可静止不动或沿两个方向旋转（顺时针或逆时针方向），旋转速度可由用户任意设定。比如：图形板在一个固定的水平位置，镜片可在全范围内转动形成一种效果。同时，图形板标准尺寸（M-型）直径 66mm。全部可以替换。更换图形板十分简便，无需特殊技巧。由于使用标准尺寸的图形板，因此用户有广泛的选择余地。我公司也可为用户“订制图形板”。

Deliya S-250 has 4 exclusive graphic board in the gobo wheel, The gobo wheel can rotate at a random speed. the normal size of a graphic board (M Model) is 23mm in diameter. All of them can be replaced. It is very easy to replace a graphic board, and no special technique is required. They have standard sizes, so users have a wide of choices. Our company can also customize graphic boards according to user requirements.

5、高速频闪

5. High speed strobe

德利亚 S-250 还具有光束频闪效果，频闪速度为 1—7 次/秒，频闪效果由内部两块挡板同时切到中央完成的，只需 0.070 秒，即可完成快速遮光（一般的时间为 0.120 秒）。

Deliya S-250 create strobe effect by shutter, with the strobe speed of 16 times/second, much higher than the average moving heads.

2、精确及平稳的运动

2. Precise and steady movement

镜片转动的速度可在一系列数值中任意选定，从最慢速度到水平最快速度 0.45 秒/150 度和垂直最大速度 0.3 秒/110 度。德利亚 S-250 电脑灯的运动效果在慢速时尤为显著。水平转动时精度为 0.60（150 度/256），垂直转动时精度为 0.4 度（110 度/256）。即使在最坏情形，精度也可达 0.3 度或 0.2 度。

Deliya S-250's movement operating with stepper motors controlled by a PWN microprocessor, which makes the movement precision, quick speed and steady. What is most vital part in the moving head is movement steady, we adopt the synchronic transmission belt and the spring steady system to adjust strength., which make the movement more quiet and lower the noise.

Special introduction

No need of controller is the exclusive function of S-250, 4 previous procedure (include dance floor 360 degree cover and wall 180 degree cover effect), fully display S-250 moving head's feature, the prompt time when carrying out is optional, swing at the most 32 moving heads simultaneously. This function is appreciated by the users who was not familiar with DMX control.

◆ 高度可靠性，耐用性

◆ High reliability and durability

1、 高可靠性

1.High reliability

德利亚 S-250 的高可靠性首先归功于灯体部件、组件. 均都经过精心设计, 材料都经过精心选用, 以保证灯体功能的完美发挥。德利亚 S-250 电脑灯中多数部件都原厂制造, 经过先进的技术加工而成, 保障了灯体的质量。

The high reliability of Deliya S-250 derives from lamp body parts and components, all of which have undergone elaborate design and materials are selected meticulously to guarantee the lamp functions to the greatest extent, secondary, due to the advanced electronic technique, our engineers gather the experience of developing intelligent light and study high precise of electronic control system, which make S-250 has perfect display.

2、 安全性

2. Safety

德利亚 S-250 中的灯体结构,电子和机械部都有极高的安全标准!

In Deliya S-250, the lamp body structure, electronic and mechanic parts are in accordance with extremely high safety standard!

*安全标准: IP20, 电源线使用 IEC 标准 20/22 三芯电缆

* Safety standard: IP 20, power line tallying with IEC Standard 20/22 Triple-Core Cable

*转向风扇强制风冷, 特殊的风道优化了空气循环

* Steering fans adopt air blast cooling, and special air channels optimize air circulation

*遇过热或冷却系统故障时, 电源自动切断

* In the case overheat takes place or there is something wrong the cooling system, power supply can be disconnected automatically

*打开外盖时, 电源自动切断保护

* When the outer cover is opened, power supply can be disconnected automatically for protection

*信号输入有保险及静态放电误接保护

I When signal is input, protection against the fuse and static discharger misconnection is provided

3.Practicability

a. Unified channel

All the functions can be controlled by 12 channels respectively, the sequences of these channels are completely the same so that it is very simple to control and program when different lights are used together.

b. Internationally universal signal

Deliya S-250 has the interfaces able to receive internationally universal standard transmission signals: DMX 512 digital signal, the light functions are finished through two internal micro-program processing units. A user can use any console or computer to realize multiple functions of the lamp. An operator can utilize any control system or the consoles available in the markets.

3、 维修方便

c.Convenient to maintain

德利亚 S-250 电脑灯灯体及内部构造都经过精心设计,十分便于日常灯体外部、内

部的维修，尤其在巡回演出使用时。

Because the lamp body and internal construction of Deliya S-250 computer lamp are designed elaborately, it is easy to carry out routine external and internal maintenances, especially on the occasion of touring performance.

*自检程序 *外盖很容易打开 *部件（单元）结构

*Self-inspection program *Easy to open the outer cover * Part (unit) structure

*容易更换的机械单元和电子插片*机械单元可迅速移动及安装

*Easy to place mechanic units and electronic plug-ins * Mechanical units can be moved and installed quickly

*双面印刷板电子线路用于电子连接

*The electronic circuits of double-sided printing circuit board are used for electronic connection

*多种接口以保证用户方便操作使用

* Multiple interfaces can ensure simple operation

◆ 技术指标: 电源:200-240V, 50/60Hz 灯泡:MSD250W MSD200W

◆ Technical indices: Power supply:200-240V, 50/60Hz Bulb: MSD250W MSD200W

Bulb model	Power consumption (VA) @220Vac		
	With (PFC)		Without PFC
	VA	uF	(V*A)
MSD250W	350	35	700

马达:

Motor:

*n1.8 高精度步进电机，由内部微程序处理器控制光路单元:

I n1.8 high precision stepping motor, optical circuit units controlled by internal micro-program processors:

Light unit:

*模压铝制成，高效的抛物面反光杯及双透镜，透镜有多层镀膜以减低光反射损失.

*Made of moulded aluminum, high efficiency reflector cup and double lens. The lens is equipped with multi-layer filming to reduce reflection loss

电子线路:

Electronic circuitry:

*两个微程序处理单元,用于信号接收及按真实时间精确控制所有功能物镜:

* Two micro-program processing units used to receive signals and control all functional object lens precisely according to the real time:

控制信号:

Control signal:

*RS 232/423(PMX)串行数字信号输入 *DMX 512 数字信号

*RS 232/423(PMX) serial digital signal input *DMX 512 digital input

控制通道:

control channel:

-----speed adjustment

—— 光圈

——color selection, rainbow effect

—— 可变色片

——gobo selection, streamline effect

—— 色片

——strobe

—— 频闪调光

—— 水平运动

—— horizontal movement

—— 垂直运动

—— vertical movement

—— 色温雾化

安全标准:

Safety standard:

*德利亚 S-250 灯体完全按照最新安全标准来设计

* The lamp body of Deliya S-250 is designed in complete accordance with the latest safety standard

*IP20 等级保护

*IP20 Class protection

*IEC20/22 三芯电源线电缆

*IEC20/22 triple-core power line cable

安全装置:

Safety device:

*过热或冷却系统故障时，电源自动切断

* In the case overheat takes place or there is something wrong the cooling system, power supply can be disconnected automatically

*外盖打开时，自动断电

* When the outer cover is opened, power supply can be disconnected automatically

*保险及静态放电器误使用时，全部输入保护

* When the fuse and static discharger are misused, complete input protection can be provided.

冷却系统:

Cooling system:

*转向强制风冷，并优化了内部空气循环

* Steering air blast cooling adopted, and internal air circulation optimized

灯体:

Lamp body:

*印模压铝灯体

* Aluminum – molding lamp body

*环氧喷漆

* Epoxy spray coating

体积规格: 340X315X360cm

Dimensions: 340X315X360cm

重量: 12kg

Weight: 12kg

附件:

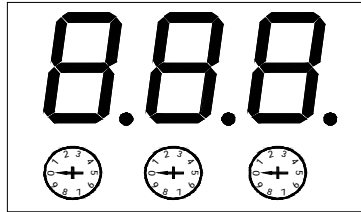
Accessories:

信号线 说明书 保修卡
Signal line Instructional Manual Warranty card

◆ 灯具的编码调整

◆ Lamp code regulation

S-250 adopts decimal system dialed number, as follows:



From left to right the LED display third, second and one place, at the bottom of LED there has 3 digital switch accordingly, when the arrow in the switch points to the number, the LED will display this number. For example:

1. 编码开关为 1-9，相对应的码数为 1-256。

1. The address code are 169, with the corresponding code number 1.6.9

Attention; when .dials 6 or 7 or 8 or 9 in the second place, there's no need to dial the one and second place, then four inner program 6,7,8,9 goes automatically.

◆ 注意事项

◆ Cautions

1: 灯泡点亮时，尽量避免直接目视。

1: When the bulb is bright, avoid seeing it directly

2: 灯泡不可连续启动。熄灭后需冷却才能重新启动。

2: The bulb must not be started repeatedly. Restarting is allowed only after it goes out and cools down.

3: 装卸或更换灯泡时，请打开灯具的活动盖，（注意在使用时，需让灯泡熄灭，继续让风扇冷却，待充分冷却后方可更换）拧松固定锁扣螺丝，拆卸时需左右稍微摇动后慢慢拨出。

3: To assemble or disassemble or replace a bulb, please open the movable cover (It is shall be noted that, when in use, replacement can be conducted after the bulb goes out and cools down sufficiently) and then get loose the fixed latch screws. During the removal, shake the bulb slightly and pull it out slowly.

4: 任何时候，手指都不可触摸灯泡的玻璃部分。开灯后先确认冷却风扇运转是否正常。禁止在冷却系统不正常下使用灯具。

4: Never have your hands to touch the glass part at any time. After lighting the lamp, first confirm whether the cooling fan operates normally. It is prohibited to use a lamp when the cooling system is abnormal.

5: 电源必须确定工作电压为 220V/50HZ，使用时电压不得低于 200V 或高于 240V，否则易造成灯泡损坏或不正常工作及缩短灯泡之正常使用寿命。

5: Be sure the power supply has working voltage of 220V/50HZ. In normal use, voltage shall not be lower than 200V or higher than 240V, otherwise the bulb may be damaged or fail to work properly and its normal service life is shortened.

6: 更换镜片时, 只需松开压片的螺丝即可。

6: To replace the lens, simply loosen the screws of the tablet.

7: 操作过程中, 如发现某灯故障, 请暂停使用此灯, 避免长时间不正常状态下运转。

7: If failure happens to a lamp during operation, please stop using it temporarily, avoiding long time operation under abnormal condition.

8: 在使用过程中如有发现控制信号紊乱或不受控, 首要的是检查灯具控制信号是否错接或短接。如以上都不是, 则需检修灯具。

8: If control signal is found to be disorderly or out of control in use, first inspect whether the lamp control signal is misconnected or in short circuit. If not the above reasons, inspect and repair the lamp.

9: 为抗信号的干扰, 各灯具的电源以及控制器之接地必需良好, 可靠。

9: To prevent signal disturbance, power supplies and controls of all lamps must be well grounded.

10: 定期进行设备的三级保养。

10: Make regular three-level service for equipment.

(包括检测各运转部件的紧固螺丝的松紧, 灯具清洁等)。

(including the inspection whether fastening screws of operating parts are tightened and whether lamps are clean).

◆ 安全作业

◆ Safety operation

* 本使用说明书上所记载的操作方法、维护指南, 注意要点等都是简单内容, 因此在使用本产品之前必须仔细阅读。

* The methods of operation, guides to maintenance and cautions described in this instructional manual must be read carefully before using this product.

* 操作方法不明白时不要依自己的判断自行操作, 必须详读该资料, 以正确的方法操作。

* When not sure of the method of operation, do not operate according to your own judgment. Read this manual in detail to realize operation in a proper way.

* 非专业人员请勿擅自拆卸或更换灯具内之零件 (机械零件和 PCB 板电子原件)。疑难的技术问题和维护, 请与本公司的“售后技术服务部”联络。

* Disassembly or replacement of internal parts (mechanical parts and PCB electronic units) shall be conducted by a qualified person. For any doubted technical problems and maintenance, please contact the “After-Sale Technical Service Department” of this company.

* 如不遵守而擅自造成的事故, 或发生的故障, 本公司概不负责。

* This company is not liable for any accidents or malfunctions due to incompliance.

◆ 保养

◆ Maintenance

* 定期进行设备的三级保养

- * Make regular three-level service for equipment
 - * 检查灯具内各运转部件的紧固螺丝松紧度（色盘的固定螺丝）。
- * Inspect whether fastening screws of operating parts are loose (fastening screws of color table).
 - * 清理灯内的灰尘与碎屑，保持灯具内的清洁与干净。
- * Clean up dust and debris in the lamp, keeping the lamp inside clean.
 - * 灯内玻璃片的清洁（反光罩，色片，波纹镜等）。
- * Clean up the glass plate in the lamp (reflector, color chip, corrugated mirror, etc.).