

SHB1300–User Manual (English–T Chinese) – **UK**

Back Cover (封底)



Specifications are subject to change without notice.
Trademarks are the property of Koninklijke Philips Electronics N.V.
or their respective owners.
2006 © Koninklijke Philips Electronics N.V. All rights reserved.

www.philips.com

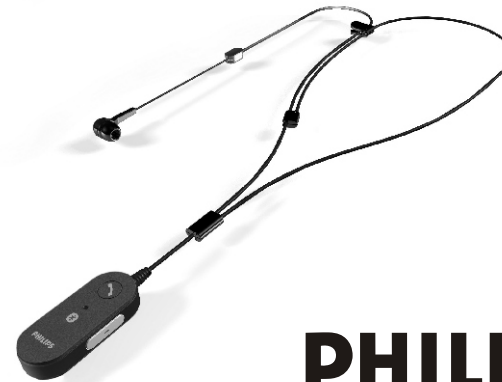
Size: 100x135mm

Cover (封面)

Bluetooth headset

SHB1300

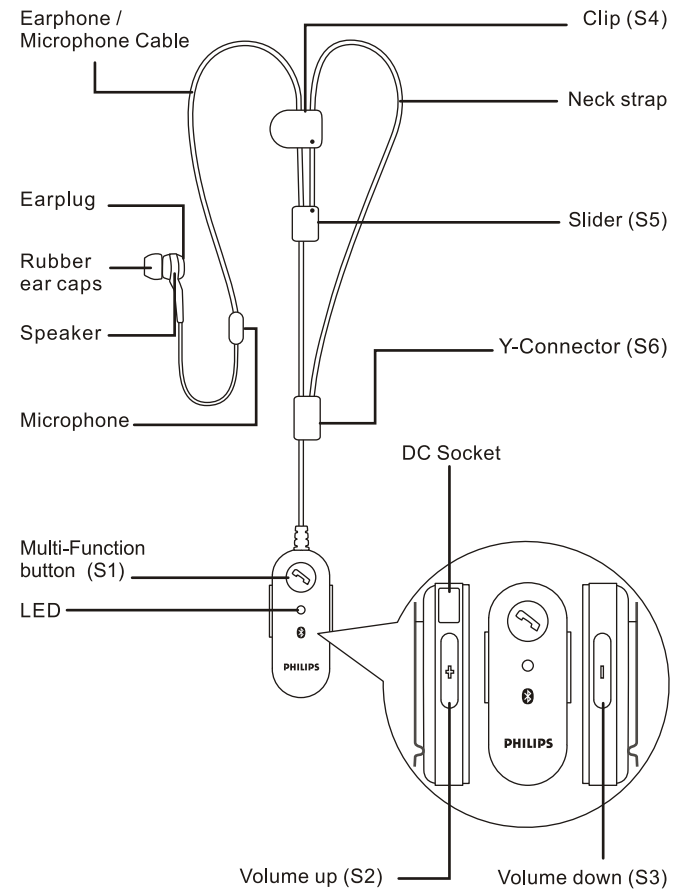
GB	User manual	2
TC	用戶手冊	11



PHILIPS

Contents

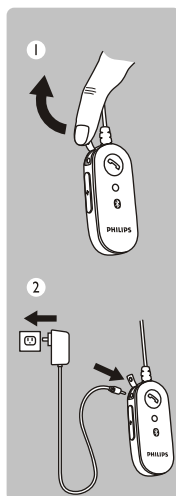
- 4 Getting started**
 - 4 Charging your headset
 - 4 Pair your headset to your mobile phone
 - 5 Turn your headset on
 - 5 Turn your headset off
 - 5 Connecting your Bluetooth headset
- 6 Using your headset**
 - 6 Answering incoming calls
 - 6 Transferring calls
 - 6 Muting the microphone
 - 6 Ending calls
 - 6 Voice dialing
 - 7 Redial last dialed number
 - 7 Reject incoming calls
 - 7 Adjusting speaker volume
- 7 Wearing your Bluetooth headset**
 - Wearing options
- 8 Troubleshooting**
- 8 Specifications**
- 9 Certifications, approvals, statements**



Bluetooth mono headset SHB1300

Congratulations! You have just bought a state-of-the-art Philips Bluetooth headset. With the Philips SHB1300 you can enjoy convenient hands-free communication with your Bluetooth enabled phone. This instruction manual will help you to get started quickly and achieve the best performance from your headset.

Getting started



Charging your headset

Before you use your headset for the first time charge the battery for 6 hours for optimum battery capacity and lifetime.

Use only the original charger (5V) for charging the headset. Using another charger may damage or destroy your headset!

Plug the AC adapter into the power outlet and connect the charger cable to the headset's DC socket. During recharging the LED indicator will show a steady red light. Charging is completed once the LED will switch off. Typically a full charge will take 3 hours.

The headset LED will flash red instead of green when the battery is low and you will hear a short beep every few minutes. Finish your call before re-charging as connecting the charger to the headset will put your headset in charging mode and could cut an ongoing call. Once the battery has run out of power you cannot power the headset on unless the charger is connected.

Pair your headset to your mobile phone

Your Bluetooth headset must be paired to your mobile phone before using it for the first time with your phone. "Pairing" will establish a unique encrypted link between your mobile phone and your headset.

1. Make sure the headset (HS) is turned off, charged and disconnected from the charging cable before you start pairing.

2. To activate pairing mode press and hold the multi function button S1 until the LED starts flashing red and green alternately. The HS will remain in pairing mode for 4 minutes, to resume pairing after 4 minutes repeat the steps above.
3. Follow the operating instructions for your mobile phone to start the pairing process. Typically this involves accessing a menu called "Setup", "Bluetooth" or "Connectivity" and selecting the option to discover or search for Bluetooth devices. After several seconds search time your phone should indicate that it has found the "Philips SHB1300".
4. Upon selecting the headset on your mobile phone typically you will need to confirm the pairing and enter a passkey or PIN. Please enter the headset's PIN "0000" (4 zeros).

The headset LED will flash green every 3 seconds, indicating successful pairing. If your phone asks whether you want to change the headset's name, you may confirm the "Philips SHB1300" name or change it. You are now ready to talk!

If pairing does not occur as expected turn the headset and phone off and wait for 10 seconds. Turn the headset and phone on again and repeat Steps 1-4.

Turn your headset on

While the headset (HS) is turned off, press and hold the multi function button until a green LED signal for 1 second and a low tone followed by a high tone will indicate that the HS is powered up. Once the HS is powered up a green LED will flash every 3 seconds.

Turn your headset off

While the HS is powered up, press and hold the multi function button S1 for 3 seconds. A high tone followed by a low tone will indicate that the HS is powered down. The LED indicator will remain red until S1 is released.

Connecting your Bluetooth headset

Pairing needs to be done only once for the initial setup. After the initial pairing follow these simple steps to connect your Bluetooth headset to your mobile phone:

- Make sure Bluetooth is enabled on your mobile phone.
- Turn on the headset

After a few seconds the connection between your headset and mobile phone will be established. If prompted by your mobile phone whether to accept the connection with the headset please confirm in order to establish the Bluetooth link. You are now ready to talk!

Using your headset

Answering incoming calls

The HS will ring when a call comes in. Press the multi function button S1 to answer the call. The green LED will flash fast (once a second) while the call is in progress.

Transferring calls (Available if supported by your mobile phone)

During your call, calls can be transferred from the Bluetooth phone to the HS and from the HS to the Bluetooth phone.

To transfer a call from HS to the Bluetooth phone, please follow the operating instructions of your phone.

To transfer a call from the Bluetooth phone to the HS: press S1 once; the call will be transferred to the HS.

Muting the microphone

To mute the microphone during an active call:

- Press the volume control buttons S2 and S3 simultaneously for about a second. A periodic beep tone will be heard while the mute function is active.

To end the mute function:

- Press the volume control buttons S2 and S3 simultaneously. The periodic beep tone will stop.

Ending calls

Press S1 to end an ongoing call. After the call is disconnected, the green LED will flash once every three seconds.

Voice dialing (Available if supported by your mobile phone)

1. Make sure the voice dialing function is properly set up in your mobile phone.
2. Press the multi function button S1 on the HS shortly.
3. After hearing the voice dial signal (four tones low to high pitch), say the name of the person as recorded in your mobile phone. The call will be connected within a few seconds.

Redialing the last dialed number (Available if supported by your mobile phone)

To redial the last dialed number, press and hold the volume down key S3 for 2 seconds. A short low tone will indicate an attempt to redial.

Rejecting incoming calls (Available if supported by your mobile phone)

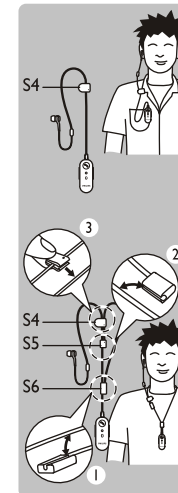
To reject an incoming call, press the multi function button S1 and hold it until you hear a long beep tone, then release it.

Adjusting speaker volume

During a call:

- Press and release S2 to increase the speaker volume and
 - Press and release S3 to decrease the speaker volume.
- A key tone will indicate any increase or decrease of the volume. A higher pitch signal tone will alert you when the volume level reaches its maximum or minimum.

Wearing your Bluetooth headset



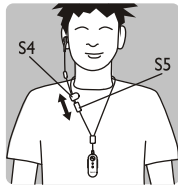
Wearing options

The Bluetooth headset can be attached to your garment with the metal clip or be worn around the neck.

To change from clip on style to necklace style, attach the neck strap in three steps:

1. Attach the Y-connector (S6) to the earplug cable close to Bluetooth device.
2. Attach the slider (S5) to the earplug cable beneath the clip (S4).
3. Fix the slider position by attaching the clip (S4) to the earplug cable.

You can detach the neck strap from the earplug cable at any time.



To adjust the neckband in size:

- Open the clip (S4)
- Move the slider (S5) up or downward on the earplug cable
- Fix your preferred length with the clip (S4)

For optimal wearing comfort choose one of the three included rubber ear caps that best fits your ear and place it on the earplug.

Troubleshooting

Problem	Possible cause	Solution
Bluetooth headset does not switch on.	Battery is very low.	Charge the battery.
No connection to mobile phone.	Bluetooth disabled.	Enable Bluetooth on your mobile phone and turn the HS on.
Mobile phone cannot find headset	Headset may not be in pairing mode. (HS stays in pairing mode for 4 min.)	Put HS in pairing mode as described above.
	Pairings may have been reset.	Start the pairing process as describe above.
Redialing does not work.	Your mobile phone may not support this feature.	
Voice dialing does not work.	Your mobile phone may not support this feature.	

*Please visit www.philips.com/support for additional support.

Specifications

Rechargeable Lithium-Ion battery
 Bluetooth 1.2 compliant, HSP, HFP
 Range: Up to 33 feet / 10 meters
 Typical standby time: 200 hours
 Typical talk time: 7 hours
 Typical charging time: 3 hours

Design and specifications are subject to change without notice. Talk time and stand-by time may vary.

Certifications, approvals, statements



PHILIPS

AQ95-56F-767KR
(report No.)

EC DECLARATION OF CONFORMITY

We, Philips Consumer Electronics .B.V., P&A: Building SFF6
(manufacturer's name)

P.O.Box 80002, 5600 JB Eindhoven, The Netherlands
(manufacturer's address)

declare under our responsibility that the product:

Philips SHB1300 -/00 -/05
(name) (type or model)

Bluetooth headset
(product description)

to which this declaration relates is in conformity with the following standards:

EN60950-1:2001
 EN301 489-1 V1.4.1 (2002-08)
 EN301 489-17 V1.2.1 (2002-08)
 EN300 328 V1.6.1 (2004-11)
 EN50371:2002 ; IEEE C95.1 ; CR 1999/519/EC
(title and/or number and date of issue of the standards)

following the provisions of 1999/5/EC (R&TTE Directives)
 and is produced by a manufacturing organisation on ISO 9000 level.

Eindhoven, 24/10/2006
(place, date)

K.Rysman
 Approbation manager
(signature, name and function)

WEEE marking into the DFU: "Customer information"

Disposal of your old product.

Your product is designed and manufactured with high quality materials and components, which can be recycled and reused.



When this crossed-out wheeled bin symbol is attached to a product it means the product is covered by the European Directive 2002/96/EC

Please inform yourself about the local separate collection system for electrical and electronic products.

Please act according to your local rules and do not dispose of your old products with your normal household waste. The correct disposal of your old product will help prevent potential negative consequences for the environment and human health.



Hereby, Philips Consumer Electronics, BG P&A, declares that this Philips Bluetooth headset SHB1300 is in compliance with the essential requirements and other relevant provisions of Directive 1999/5/EC.

Trademarks

The Bluetooth word mark and logos are owned by the Bluetooth SIG, Inc. and any use of such marks by Koninklijke Philips Electronics N.V. is under license. Other trademarks and trade names are those of their respective owners.

內容

- 13 開始
- 13 替耳機充電
- 13 將耳機與流動電話配對
- 14 啟動耳機
- 14 關閉耳機
- 14 連接藍牙耳機

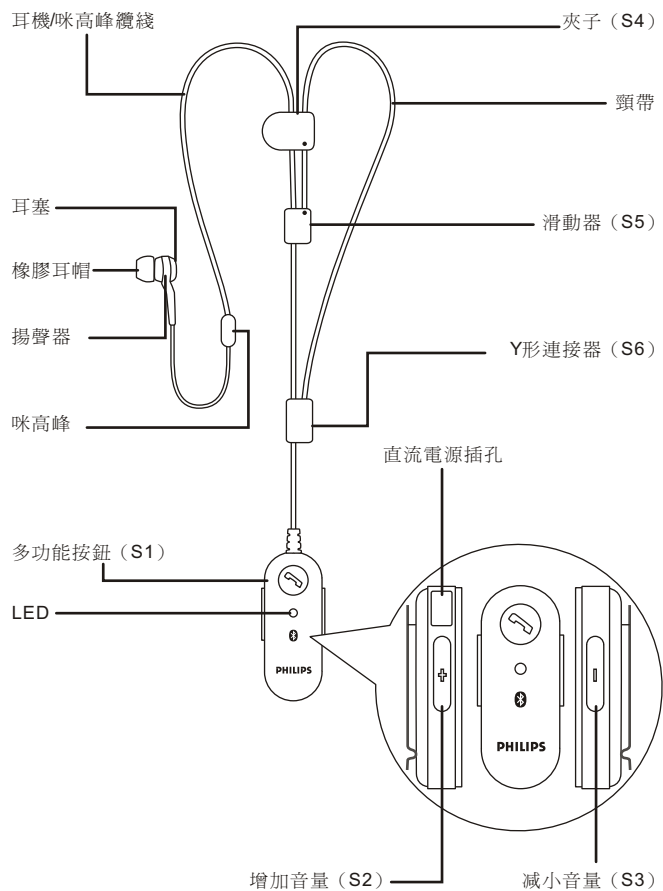
- 15 使用耳機
- 15 接聽來電
- 15 轉駁電話
- 15 將咪高風靜音
- 15 結束通話
- 15 語音撥號
- 16 重撥最後撥出的電話號碼
- 16 拒絕來電
- 16 調校揚聲器音量

- 16 佩戴耳機
- 佩戴選項

- 17 問題解答與支援

- 17 規格

- 18 證書、批准、聲明



12

單聲道藍牙耳機

SHB1300型

感謝閣下購買飛利浦最先進的藍牙耳機。使用SHB1300型耳機，閣下便可以使用具備支援藍牙功能的手提電話，進行通訊無間的免提通話功能。本使用手冊將協助您快速啟動耳機，並獲取最佳的性能。

開始

替耳機充電

在首次使用耳機之前，請將電池充電6小時，以達到最佳的電池容量及使用壽命。

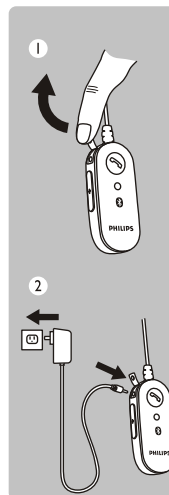
只可使用原裝充電器 (5V) 替耳機充電。使用其它充電器，可能會損壞或破壞耳機！

將交流電配接器插入電源插座，將充電器的纜線，連接到耳機的直流電插孔。在充電期間，LED指示燈將會持續亮起紅色。一旦指示燈熄滅，即表示充電完畢。標準的充電時間是3小時。

如果電量降低，耳機的LED指示燈，便會閃現紅色，同時每隔數分鐘，您便會聽到一次嗶嗶聲。請您在通話結束後，再次為耳機充電，因為一旦連接了充電器，耳機便會進入充電模式，可能中斷正在進行的通話。一旦電量耗盡，只有連接充電器，才能啟動耳機。

將耳機與流動電話進行配對

在首次使用流動電話前，必須將藍牙耳機與流動電話進行配對。通過“配對”過程，便可在流動電話與耳機之間，建立獨一無二的加密連接。



13

- 1.在開始配對前，確保已關閉耳機、充電完畢和與充電纜分離。
- 2.如需啓動配對模式，請持續按下多功能按鈕S1，直到LED燈開始紅、綠交替閃動。耳機將會在配對模式維持4分鐘。在4分鐘過後，如需恢復配對模式，請重複上述步驟。
- 3.根據流動電話的操作說明，開始配對過程。該過程將會涉及進入一個名為“Setup”、“Bluetooth”或“Connectivity”的功能表，請揀選該選項以發現或搜索藍牙設備。當數秒鐘的搜索時間過後，閣下的流動電話，應顯示已找到“Philips SHB1300”的字樣。
- 4.在流動電話選擇耳機時，必須確認配對過程，和輸入一個密碼或PIN碼。請輸入“0000”（4個零）作為耳機的PIN碼。

耳機的LED燈，將會每3秒鐘呈現綠色閃燈，這表示配對成功。如果您的電話提示您，是否想改變耳機的名稱，您可以確認“Philips SHB1300”或進行更改。現在，您便可以隨時通話了！

如果配對過程沒有按照預期實行，請關閉耳機和電話，並等待10秒鐘。然後再次啓動耳機和電話，以及重複1-4的步驟。

啓動耳機

當耳機關閉時，請持續按下多功能按鈕，直至綠色LED燈亮起1秒鐘，你便會先聽到一聲低音，接著便是一聲高音信號，這表明耳機已經啓動。當耳機啓動，綠色LED燈便會每隔3秒閃動一次。

關閉耳機

當耳機處於啓動狀態時，持續按下S1按鈕3秒，你會先聽到一聲高音，隨後會聽到一聲低音，這表明耳機已被關閉。在鬆開S1按鈕之前，LED燈會一直保持紅色。

連接藍牙耳機

在初始設定時，只須進行一次配對操作。在進行初始配對後，請按照這些簡單的步驟，將藍牙耳機與流動電話連接：

- 確保已啓動流動電話的藍牙功能。
- 啓動耳機。

幾秒鐘後，便會建立耳機與流動電話之間的連接。如果流動電話提示您是否接受與耳機的連接，請確認此指令，以便建立藍牙的連結。現在，您可以隨時進行通話了！

使用耳機

接聽來電

當有來電時，耳機便會響起。按下多功能按鈕S1，便可接聽電話。在通話過程中，綠色LED指示燈，將會快速閃動（每秒一次）。

轉駁電話（如閣下的無線電話能支援此功能）

在通話期間，你可以從藍牙電話轉駁來電到耳機上，也可以從耳機轉駁來電到藍牙電話中。

如需將來電從耳機轉駁到藍牙電話，請根據電話的使用說明，進行操作。

如需將來電從藍牙電話轉駁到耳機：請按S1按鈕一次，便可將來電轉駁到耳機上。

將咪高峰靜音

如需在通話期間，將咪高峰靜音：

- 請同時按下S2和S3音量控制按鈕約1秒。在靜音功能啓動期間，您將會聽到定期的嗶嗶聲。

如要結束靜音功能：

- 請同時按下S2和S3音量控制按鈕，定期的嗶嗶聲便會停止。

結束通話

按下S1按鈕，便可結束正在進行的通話。通話完畢後，綠色LED指示燈，便會每3秒鐘閃動一次。

語音撥號

1. 請確保流動電話的語音撥號功能，已經適當設定。
2. 短暫按下耳機上的S1多功能按鈕。
3. 當聽到語言撥號訊號後（4個音調—從低音到高音），請讀出記錄在流動電話的人名，只須幾秒，便會接通電話。

重撥最後撥出的號碼（如閣下的無線電話能支援此功能）

如需重撥最後撥出的電話號碼，請持續按下S3音量減低按鈕兩秒，你會聽到一聲低音，表明正在進行重撥。

拒絕接聽來電（如閣下的無線電話能支援此功能）

如要拒絕接聽來電，請按下S1多功能按鈕，直至聽到一聲長的嗶嗶聲，然後鬆開該按鈕。

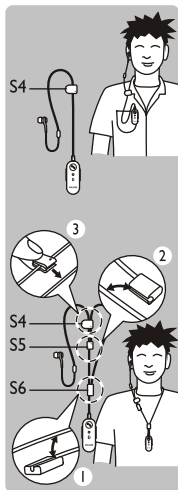
調校揚聲器音量

在通話過程中：

- 按下並鬆開S2按鈕，便可增加揚聲器的音量。
- 按下並鬆開S3按鈕，便可減小揚聲器的音量。

如果您聽到按鍵音調，這表明音量已經增加或減小。如果音量已達至其最高或最低級別，便會有一個較高的訊號音調提醒你。

佩戴藍牙設備



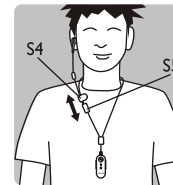
佩戴選項

閣下可以用金屬夾子，將藍牙耳機附在衣服上，也可以掛在頸項上。

如需從夾子的固定方式，改變至頸鏈的佩戴方式，可按以下三種步驟，佩戴頸帶：

1. 將Y形連接器（S6）連接到耳塞纜線上靠近藍牙器材的位置。
2. 將滑動開關（S5）連接到耳塞纜線上夾子（S4）的下方。
3. 將夾子（S4）固定到耳塞纜線上，以便固定滑動器的位置。

在任何時候，您也可以把頸帶從耳塞纜線上拆下來。



如需調校頸帶的鬆緊：

- 開啓夾子（S4）
- 將耳塞纜線上的滑動器（S5）往上或往下移動
- 用夾子（S4）固定您須要的長度

要想佩戴舒適自然，請從隨機附送的那三個橡膠耳帽中，選擇最貼合耳朵形狀的一個，并將其固定在耳塞纜線上。

疑難解答和支援

疑難	可能原因	解決方法
藍牙耳機沒有啓動。	電量過低。	替藍牙耳機充電。
與流動電話之間沒有連接。	藍牙功能被取消。	啓動流動電話上的藍牙功能，然後開啓耳機。
流動電話找不到耳機	耳機可能不是在配對模式。（耳機只在配對模式約4分鐘）。	按照上述的步驟，將耳機設定為配對模式。
	配對功能被重新設定。	按照上述的步驟，啓動配對操作。
重撥功能不能操作。	閣下的流動電話，可能不支持本功能。	
語音撥號無效。	閣下的流動電話，可能不支持本功能。	

*請瀏覽www.philips.com/support 網址，以獲得更多支援訊息。

規格

可充電鋰離子電池
符合藍牙1.2、HSP、HFP
範圍：達33英尺 / 10米
標準備用時間：7小時
標準通話時間：長達200小時
標準充電時間：3小時

如果設計和規格有任何改變，恕不另行通知。通話時間和備用時間，可能有改變。

證書、批准、聲明

商標

藍牙文字標記和圖標是Bluetooth SIG所擁有。荷蘭皇家飛利浦電子股份有限公司對此等標記的任何使用，都是根據牌照條例進行。其它商標和商用名稱，是其相關的所有者所擁有。