

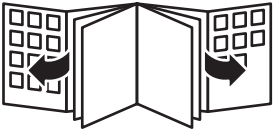
Register your product and get support at

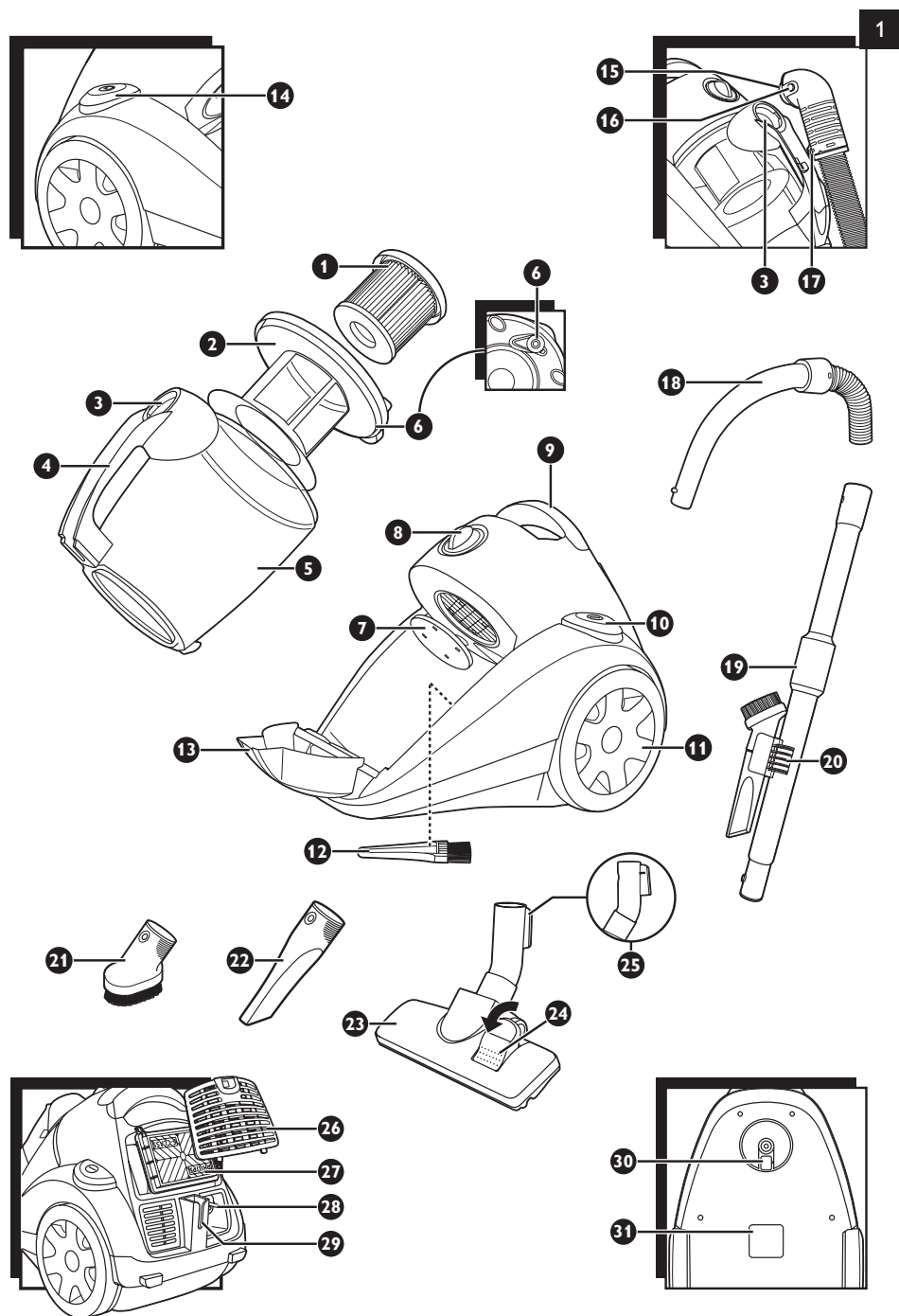
[www.philips.com/welcome](http://www.philips.com/welcome)

FC8732



**PHILIPS**







**ENGLISH 6**

简体中文 11

## Introduction

Congratulations on your purchase and welcome to Philips! To fully benefit from the support that Philips offers, register your product at [www.philips.com/welcome](http://www.philips.com/welcome).

## General description (Fig. 1)

- 1 Filter cylinder
- 2 Filter cylinder case
- 3 Hose connection opening
- 4 Dust bucket handle
- 5 Dust bucket
- 6 Filter cylinder lock
- 7 Motor protection filter
- 8 Suction power knob
- 9 Top handle
- 10 On/off button
- 11 Rear wheel
- 12 Cleaning brush
- 13 Hinged dust bucket retainer
- 14 Cord rewind button
- 15 Hose connector
- 16 Hose connector release buttons
- 17 Hose fastening hook
- 18 Hose with handgrip
- 19 Telescopic tube
- 20 Accessory clip
- 21 Small brush
- 22 Crevice tool
- 23 Combination nozzle
- 24 Rocker switch
- 25 Parking ridge
- 26 Filter grille
- 27 Super Clean Air HEPA 12 filter
- 28 Mains plug
- 29 Parking slot
- 30 Swivel wheel
- 31 Type plate

## Important

Read this user manual carefully before you use the appliance and save it for future reference.

### Danger

- Never suck up water or any other liquid. Never suck up flammable substances and do not suck up ashes until they are cold.

### Warning

- Check if the voltage indicated on the appliance corresponds to the local mains voltage before you connect the appliance.
- Do not use the appliance if the plug, the cord or the appliance itself is damaged.
- If the mains cord is damaged, you must have it replaced by Philips, a service centre authorised by Philips or similarly qualified persons in order to avoid a hazard.
- This appliance is not intended for use by persons (including children) with reduced physical, sensory or mental capabilities, or lack of experience and knowledge, unless they have been given

supervision or instruction concerning use of the appliance by a person responsible for their safety.

- Children should be supervised to ensure that they do not play with the appliance.
- Do not point the hose, the tube or any other accessory at the eyes or ears nor put it in your mouth when it is connected to the vacuum cleaner and the vacuum cleaner is switched on.

### **Caution**

- Keep the appliance out of the reach of children.
- Do not suck up large objects as this may cause the air passage in the tube or hose to become obstructed.
- Never use the appliance without the motor protection filter. This could damage the motor and shorten the life of the appliance.
- Only use the Philips filter cylinder supplied with the appliance.

## **Electromagnetic fields (EMF)**

This Philips appliance complies with all standards regarding electromagnetic fields (EMF). If handled properly and according to the instructions in this user manual, the appliance is safe to use based on scientific evidence available today.

## **Preparing for use**

Connecting accessories

### **Hose**

- 1** To connect the hose, insert the hose fastening hook into the opening (1) and then push the hose connector downwards ('click') (2) (Fig. 2).
- 2** To disconnect the hose, press the release buttons (1) and pull the hose connector out of the hose connection opening (2). (Fig. 3)

### **Telescopic tube**

- 1** To connect the tube to the handgrip of the hose, press the spring-loaded lock button on the handgrip and insert the handgrip into the tube. Fit the spring-loaded lock button into the opening in the tube ('click') (Fig. 4).
- 2** To disconnect the tube from the handgrip, press the spring-loaded lock button and pull the handgrip out of the tube.

Use the same method to connect and disconnect the nozzles.

- 3** Adjust the tube to the length you find most comfortable during vacuum cleaning. Push the slide downwards (1) with one hand and pull the upper part of the tube upwards or push it downwards (2) with the other hand (Fig. 5).

### **Combination nozzle**

You can use the combination nozzle on carpets (with the brush strips folded in) or on hard floors (with the brush strips folded out).

- 1** (Fig. 6)  
To clean hard floors, push the rocker switch on top of the combination nozzle with your foot. The brush strips come out of the nozzle housing.
- 2** To clean carpets, push the rocker switch again to make the brush strips disappear into the nozzle housing again. (Fig. 7)

### **Crevice tool and small brush**

- You can connect the crevice tool (1) or the small brush (2) directly to the handgrip or to the tube (Fig. 8).

### **Accessory clip**

- The accessory clip can simply be snapped onto the tube.
- You can snap the crevice tool and the small brush onto the clip (Fig. 9).

## **Using the appliance**

- 1** Pull the cord out of the appliance and put the mains plug in the wall socket.
- 2** Press the on/off button to switch on the appliance (Fig. 10).
  - During vacuuming, you can adjust the suction power with the suction power knob (Fig. 11).
  - Use maximum suction power to vacuum very dirty carpets and hard floors.
  - Use minimum suction power to vacuum curtains, table carpets, etc.
  - If you want to pause for a moment, insert the ridge on the nozzle into the parking slot to park the tube in a convenient position (Fig. 12).

## **Cleaning and maintenance**

Do not clean any parts of the appliance in the dishwasher.

Always switch the appliance off and unplug it before you remove and clean any parts.

### **Emptying the dust bucket**

- Empty the dust bucket as soon as the dust level has reached the round disc of the filter cylinder case (Fig. 13).

- 1** Disconnect the hose from the appliance.
- 2** Pull the dust bucket retainer downwards to release the dust bucket (Fig. 14).
- 3** Grab the dust bucket handle and lift the dust bucket out of the appliance (Fig. 15).
- 4** Hold the dust bucket over a dustbin and lift the filter cylinder case out of it. (Fig. 16)
- 5** Empty the dust bucket into the dustbin (Fig. 17).

You can clean the dust bucket with cold tap water and some washing-up liquid.

- 6** Put the filter cylinder case back into the dust bucket and put the bucket back into the appliance.

Make sure you have inserted the filter cylinder into the filter cylinder case, otherwise it is not possible to close the dust bucket retainer.

## **Cleaning and maintenance of filters**

### **Filter cylinder**

Clean the filter cylinder every week.

- 1** Remove the dust bucket from the appliance, unlock the filter cylinder lock (1) and lift the filter cylinder out of the filter cylinder case (2) (Fig. 18).
- 2** Clean the filter cylinder with the brush supplied. Brush from the top of the filter cylinder downwards along the ribs (Fig. 19).

Only use the brush supplied! Other brushes may damage the filter cylinder.

- 3** Remove the filter cylinder case from the dust bucket.

- 4** If there is any dirt on the inside of the case, empty the case over a dustbin.
- 5** If necessary, clean the filter cylinder case with cold tap water and some washing-up liquid (Fig. 20).
- 6** If you want to wash the filter cylinder, wash it thoroughly with only water.  
Do not use any soap, washing-up liquid or other detergent to clean the filter cylinder. Let the filter cylinder dry completely before you reinsert it into the case.
- 7** Unlock the filter cylinder lock and put the filter cylinder back into the filter cylinder case.
- 8** Put the filter cylinder case back into the dust bucket and put the dust bucket back into the appliance.

### Motor protection filter

Clean the motor protection filter every time you clean the filter cylinder case.

- 1** Take the motor protection filter out of the appliance (Fig. 21).

Clean the filter by tapping the dust out of it over a dustbin.

- 2** Tap the dust out of the filter over a dustbin.

If the motor protection filter is very dirty, you can also rinse it with cold tap water.

Do not use washing-up liquid or any other cleaning agent to clean the motor protection filter!

- 3** Press the clean filter firmly back into the filter compartment to ensure that it is properly placed. (Fig. 22)

### Super Clean Air HEPA 12 filter

This appliance is equipped with the Super Clean Air HEPA 12 filter. This filter is able to remove 99.9% of all particles down to 0.0003mm in size from the outlet air. This not only includes normal household dust, but also harmful microscopic vermin such as dust mites and their excrements, which are well-known causes of respiratory allergies.

- Replace the Super Clean Air HEPA 12 filter every six months.

- 1** Open the filter grille (Fig. 23).
- 2** Remove the old filter (Fig. 24)
- 3** Insert the new filter into the appliance (Fig. 25).
- 4** Close the filter grille ('click') (Fig. 26).

### Storage

- 1** Switch off the appliance and remove the mains plug from the wall socket.
- 2** Press the cord rewind button to rewind the mains cord (Fig. 27).
- 3** Insert the ridge on the nozzle into the parking slot to attach the nozzle to the appliance.  
Store the appliance in horizontal position, with all wheels touching the floor. (Fig. 12)

### Ordering accessories and filters

If you have any difficulties obtaining filters or other accessories for this appliance, contact the Philips Consumer Care Centre in your country or consult the worldwide guarantee leaflet.

- Philips filter cylinders are available under type number FC8047/02.
- Super Clean Air HEPA 12 filters are available under type number FC8044.

**Environment**

- Do not throw away the appliance with the normal household waste at the end of its life, but hand it in at an official collection point for recycling. By doing this, you help to preserve the environment (Fig. 28).

**Guarantee & service**

If you need service or information or if you have a problem, please visit the Philips website at [www.philips.com](http://www.philips.com) or contact the Philips Consumer Care Centre in your country (you find its phone number in the worldwide guarantee leaflet). If there is no Consumer Care Centre in your country, go to your local Philips dealer.

**Troubleshooting**

- 1 The suction power is insufficient.
  - Make sure the suction power knob is in maximum position.
  - Perhaps the filter cylinder is dirty. Clean the filter cylinder.
  - Perhaps the other filters are dirty. Clean or replace the other filters.
  - The nozzle, tube or hose may be blocked up. To remove the obstruction, disconnect the blocked-up item and connect it (as far as possible) the other way around. Switch the vacuum cleaner on to force the air through the blocked-up item in opposite direction (Fig. 29).
- 2 The dust bucket retainer cannot be closed.
  - Make sure you have inserted the filter cylinder properly into the filter cylinder case.

## 产品简介

感谢您的惠顾，欢迎光临飞利浦！为了您能充分享受飞利浦提供的支持，请注册您的产品，网址为 [www.philips.com/welcome](http://www.philips.com/welcome)。

## 一般说明 (图 1)

- 1 滤芯
- 2 滤芯罩
- 3 软管连接孔
- 4 集尘桶把手
- 5 集尘桶
- 6 滤芯锁
- 7 马达保护滤网
- 8 吸力控制旋钮
- 9 顶部把手
- 10 开/关钮
- 11 后轮
- 12 清洁刷
- 13 翻动式集尘桶固定盖板
- 14 电源线回卷按钮
- 15 软管接口
- 16 软管接口释放钮
- 17 软管挂钩
- 18 带握把软管
- 19 伸缩管
- 20 附件夹
- 21 小号毛刷
- 22 缝隙工具
- 23 组合吸嘴
- 24 转换开关
- 25 摆放夹片
- 26 过滤器栅格
- 27 超洁空气 HEPA 12 过滤网
- 28 电源插头
- 29 摆放固定槽
- 30 转轮
- 31 型号牌

## 注意事项

使用产品之前，请仔细阅读本使用说明书，并妥善保管以备日后参考。

### 危险

- 切勿吸取水或其它液体。切勿吸取易燃物质，并且不要吸取未冷却的灰烬。

### 警告

- 在将产品连接电源之前，请先检查产品所标电压与当地的供电电压是否相符。
- 如果插头、电源线或产品本身受损，请勿再使用本产品。

- 如果电源软线损坏，为避免危险，必须由制造厂或其维修部或类似的专职人员来更换。
- 本产品不打算由肢体不健全、感觉或精神上有障碍或缺乏相关经验和知识的人（包括儿童）使用，除非有负责他们安全的人对他们使用本产品进行监督或指导。
- 应照看好儿童，确保他们不玩耍这些产品。
- 当连接到真空吸尘器并且真空吸尘器已打开时，请勿将软管、硬管或任何其它附件指向眼睛或耳朵，也不要放在口中。

### 注意

- 请将产品放置在儿童接触不到的地方。
- 切勿吸取大型物体，否则可能阻塞硬管或软管中的空气通道。
- 切勿在未安装马达保护滤网的情况下使用产品。这将会使马达受损，并缩短产品的使用寿命。
- 只能使用本产品随附的飞利浦滤芯。

### 电磁场 (EMF)

这款飞利浦产品符合关于电磁场 (EMF) 的所有相关标准。据目前的科学证明，如果正确使用并按照本用户手册中的说明进行操作，本产品是安全的。

## 使用准备

连接附件

### 软管

- 1 连接软管时，先将软管挂钩插入软管连接孔 (1)，然后向下推软管接口（听到喀哒一声）(2)。(图 2)
- 2 要拔出软管，请按释放钮 (1)，然后将软管接口拉出软管连接孔 (2)。(图 3)

### 伸缩管

- 1 将伸缩管与软管的握把连结时，按下握把上的弹簧锁按钮，将握把插入吸管。将弹簧锁按钮对准，插入硬管的开口（听到喀哒一声）。(图 4)
- 2 要将握把从硬管中拉出，按下弹簧式锁定钮，将握把从硬管中拔出。  
请通过同样的方法来连接及拆卸吸嘴。
- 3 在吸尘过程中，您可以调节硬管以找到最舒适的长度。用一只手向下推滑杆 (1)，用另一只手向上拉或向下推硬管的上半部分 (2)。(图 5)

### 组合吸嘴

您可以在地毯（刷条内翻）或硬地板（刷条外翻）上使用组合吸嘴。

- 1 (图 6)  
要清洁硬地板，请用脚推动组合吸嘴上的刷毛转换块。刷条即从吸嘴外壳中伸出来。
- 2 要清洁地毯，请再次推动吸尘嘴上刷毛转换块，让刷条重新没入到吸尘嘴外壳中。(图 7)

## 缝隙吸嘴和小型毛刷

- 您可以将缝隙吸嘴 (1) 或小型毛刷 (2) 直接连接到握把或硬管。(图 8)

### 附件夹

- 附件夹可简单地扣合在硬管上。
- 您可以将缝隙吸嘴和小型毛刷扣合在附件夹上。(图 9)

## 使用本产品

- 1 将电源线从吸尘器中拉出，并将电源插头插入插座。
- 2 按 on/off 开关按钮打开产品。(图 10)
  - 在吸尘期间可用吸力控制旋钮来调节吸力。(图 11)
  - 对于特别脏的地毯和硬地板，可用最大吸力吸尘。
  - 清洁门帘、台布或其他物品时，可用最小吸力。
  - 如要暂停使用吸尘器，可通过将吸嘴上的夹片插入摆放固定槽以将硬管放妥。(图 12)

## 清洁和维护

请勿将本产品的任何部件放入洗碗机中清洗。

在拆卸和清洗任何部件前都请关闭产品电源并拔出电源插头。

### 倒空集尘桶

- 当灰尘累积到达滤芯罩的圆盘处，就应立即倒空集尘桶。(图 13)

- 1 从产品中拔出软管。
- 2 向下拉集尘桶固定盖板，释放集尘桶。(图 14)
- 3 抓住集尘桶把手，将集尘桶从产品中拉出。(图 15)
- 4 将集尘桶置于垃圾箱上方，提起滤芯罩。(图 16)
- 5 将集尘桶倒空至垃圾箱中。(图 17)  
您可以使用冷水和一些洗涤剂清洁集尘桶。
- 6 将滤芯罩放回集尘桶，并将集尘桶放回吸尘器。

确保您将滤芯插入了滤芯罩，否则将无法合上集尘桶固定盖板。

## 过滤器的清洁和保养

### 滤芯

每个星期清洗一次滤芯。

- 1 从产品中取出集尘桶，解除滤芯锁锁定 (1)，将滤芯从滤芯罩中提出 (2)。(图 18)
- 2 用随附的刷子清洁滤芯。沿着滤芯的纹路，从上往下刷。(图 19)  
**只能使用随附的刷子！其他刷子可能损坏滤芯。**

- 3 从集尘桶中取出滤芯罩。
- 4 如果滤芯罩内有灰尘，应在垃圾桶的上方将其倒空。
- 5 如有必要，可用洗涤剂清洗滤芯罩，并在自来水龙头下用冷水冲洗。(图 20)
- 6 清洗滤芯时，只能用水将其彻底清洗。

## 14 简体中文

切勿使用任何肥皂、洗涤剂或其它清洁剂清洗滤芯。在装入滤芯罩之前，应让其完全干燥。

**7** 解除滤芯锁锁定，然后将滤芯装回滤芯罩。

**8** 将滤芯罩放回集尘桶，并将集尘桶放回吸尘器。

### 马达保护滤网

每次清洁滤芯罩时，应清洗马达保护滤网。

**1** 从产品中取出马达保护滤网。(图 21)

在垃圾箱上方将滤网上的灰尘拍掉。

**2** 在垃圾箱上方拍掉滤网上的灰尘。

如果马达保护滤网已经很脏，也可以在水龙头下用冷水冲洗。

**请勿使用洗涤剂或任何其它清洁剂清洗马达保护滤网！**

**3** 将清洁的过滤器放回过滤器仓，确保安装得当。(图 22)

### 超洁空气 HEPA 12 过滤网

本产品安装了 HEPA 12 高效能过滤网。这种滤网可以从排出空气中过滤 99.5% 的最小为 0.0003 毫米的颗粒。这不仅能过滤普通的室内灰尘，而且还能过滤显微级别的寄生虫，如尘螨及其排泄物。众所周知，这些都是呼吸道过敏源。

- 每 6 个月更换一次超洁空气 HEPA 12 过滤网。

**1** 打开过滤器栅格。(图 23)

**2** 拆下旧的滤网。(图 24)

**3** 将新的滤网插入吸尘器。(图 25)

**4** 关闭滤网栅格（发出喀哒一声）。(图 26)

### 存放

**1** 关闭吸尘器的电源，从插座中拔下电源插头。

**2** 按下电源线回卷按钮将电线回卷到吸尘器中。(图 27)

**3** 将吸嘴上的夹片插入摆放固定槽，将吸嘴固定在产品上。水平放置产品，使所有轮子着地。(图 12)

### 订购附件和滤网

如果您购买本产品的滤网或其它附件有困难，请与您所在国家/地区的飞利浦客户服务中心联系，或参阅全球保修卡。

- 可提供适用于 FC8047/02 型号的飞利浦滤芯。
- 超洁空气 HEPA 12 过滤网的型号是 FC8044。

### 环保

- 弃置产品时，请不要将其与一般生活垃圾堆放在一起；应将其交给官方指定的回收中心。这样做有利于环保。(图 28)

### 保修与服务

如果您需要服务或信息，或者有任何疑问，请访问飞利浦网站：[www.philips.com](http://www.philips.com)。您也可与您所在地的飞利浦顾客服务中心联系（可从全球保修卡中找到其电话号码）。如果您的所在地没有飞利浦顾客服务中心，则可以与当地的飞利浦经销商联系。

## 故障排除

- 1 吸力不足。
  - 确保吸力控制旋钮在最大位置。
  - 滤芯可能不干净。清洁滤芯。
  - 其它过滤器可能不干净。清洁或更换其它过滤器。
  - 检查吸嘴、硬管、软管是否被阻塞。要清除阻塞物，请将阻塞的部分拆下，并将它反向连接（尽可能离远一些）。打开吸尘器的电源，强迫气流反方向通过阻塞的部位。（图 29）
- 2 无法合上集尘桶固定盖板。
  - 确保滤芯正确插入了滤芯罩。

# PHILIPS

产品 : 飞利浦家用  
真空卧式吸尘器

型号 : FC8732

额定电压 : 220V~

额定频率 : 50Hz

额定输入功率: 1600 W

生产日期 : 请见产品底部

产地 : 中国



珠海经济特区飞利浦家庭电器有限公司  
中国珠海市三灶镇琴石工业区  
邮政编码: 519040  
电话: 0756-7621898

全国顾客服务热线: 4008 800 008

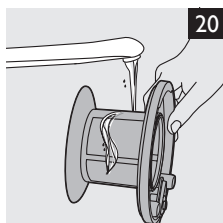
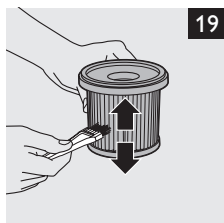
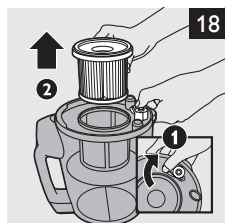
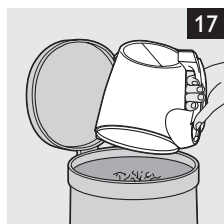
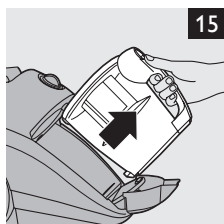
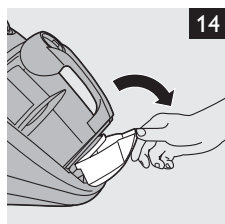
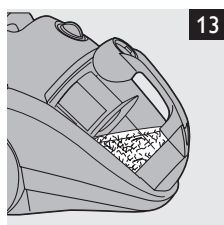
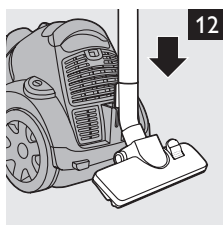
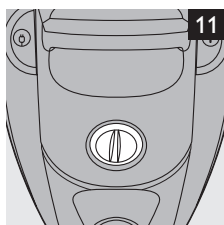
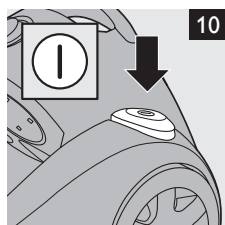
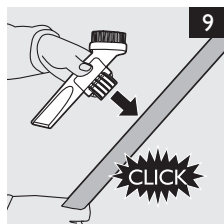
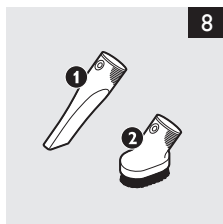
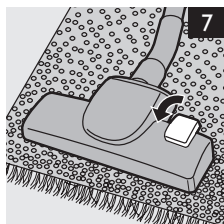
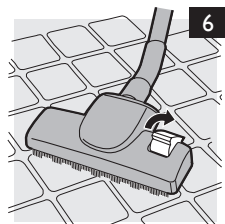
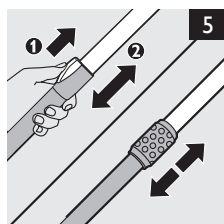
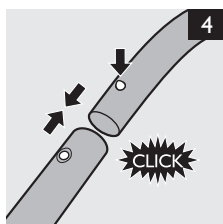
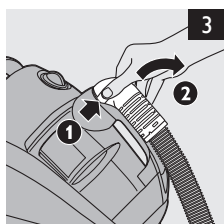
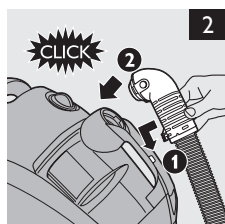
本产品根据国标GB4706.1-2005, GB4706.7-2004,  
GB4343.1-2003及GB17625.1-2003制造

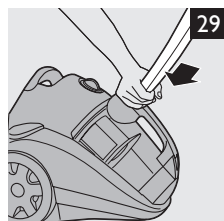
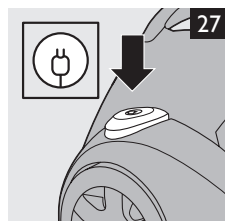
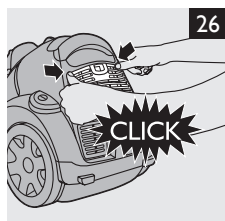
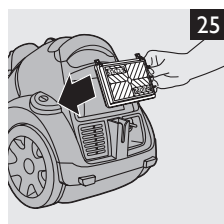
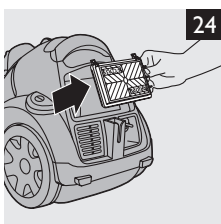
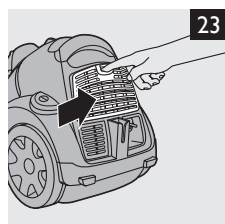
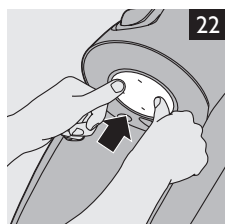
请妥善保管本使用说明书

发行日期: 2008/02/21



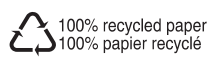








[www.philips.com](http://www.philips.com)



4222.003.3387.1