

Panasonic®

AC/Rechargeable Shaver

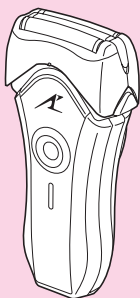
交流/充电式电动剃须刀

Operating Instructions

使用说明书

Model No. ES8801

型号 ES8801



Before operating this unit, please read these instructions completely.
Thank you for purchasing the Panasonic Rechargeable Shaver
Model No. ES8801.

在使用前，请仔细阅读此说明书

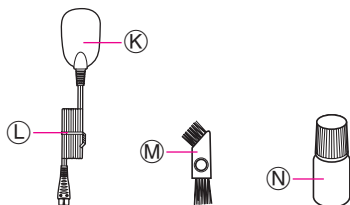
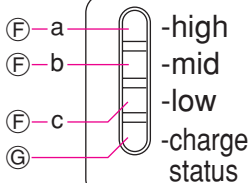
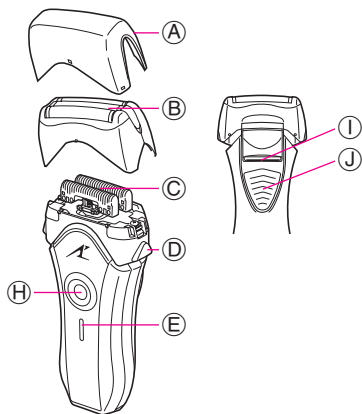
承蒙选购Panasonic ES8801 型电动剃须刀，在此谨致谢意。

Caution

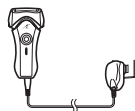
注意书

- The outer foil is very thin and should not be exposed to excessive pressure or impact which may deform or damage it.
外刀网薄而精密，使用不当容易引起变形或损坏。
- If the outer foil is deformed or damaged, do not shave with it, because skin irritation can result.
外刀网若变形或损坏，请勿继续使用，以免损伤皮肤。
- Both the foil and the blade have a limited service life. To keep a better result, we suggest you to replace the outer foil and the inner blade at regular intervals.
外刀网和内刀头是有使用期限的，为保持良好的效果，我们建议您定期进行更换。
- Both the foil and the blade are available in the department store or Panasonic service station.
所需更换的外刀网和内刀头，可到附近百货店或特约维修中心购买。

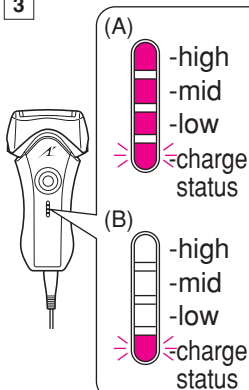
1



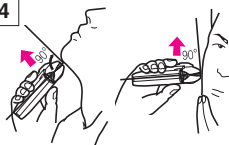
2



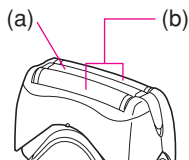
3



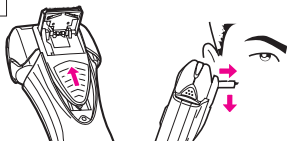
4



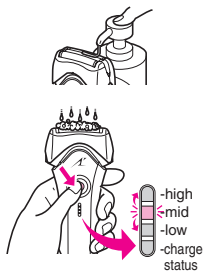
5



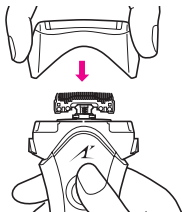
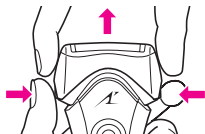
6



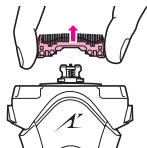
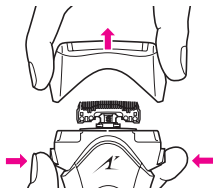
7



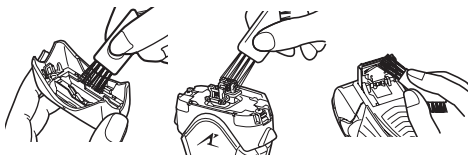
8



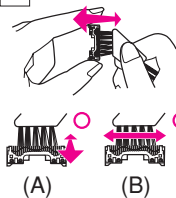
9



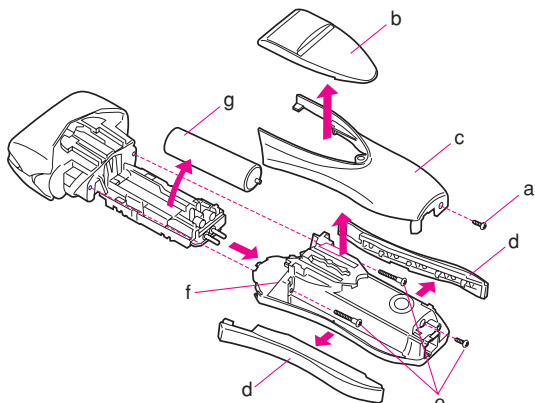
10



11



12



13



Index

ENGLISH
CHINESE

Page 6
Page 12

英文
中文

页数 6
页数 12

Parts identification

(see fig. 1)

- (A) Protective cap**
- (B) System outer foil**
- (C) Inner blades**
- (D) System outer foil release buttons**
- (E) LED display**
- (F) Battery capacity monitor**
 - (F-a) high**
 - (F-b) mid**
 - (F-c) low**
- (G) Charge status lamp**
- (H) 0/1 switch**
- (I) Trimmer**
- (J) Trimmer handle**
- (K) Adaptor**
- (L) Power cord**
- (M) Cleaning brush**
- (N) Oil**

**READ ALL INSTRUCTIONS
BEFORE USE.**

Charging

Connect the power cord to the shaver, and plug the adaptor to an AC outlet. (see fig. 2)

The shaver will be adjusted automatically to voltages between 100-240V AC.

In some areas, a special plug adaptor may be required.

- When charging the shaver for the first time or when it has not been in use for more than 6 months, the charge status lamp may not illuminate for a few minutes after operation. It will eventually illuminate if kept connected.

Adequate ambient temperature for charging is between 15 to 35°C.

- If it is far below or over the appropriate temperature, the charging time may extend, or the adaptor may not function.
- In particular, low temperature may shorten the life span of the rechargeable battery. In this case, the charge status lamp blinks twice in 1 second.

The charge status lamp will glow when the shaver is being charged.

The battery capacity monitor will all illuminate and the charge status lamp will blink after charging is completed (see fig. 3 (A)).

10 minutes after charging is completed, the battery capacity monitor will extinguish and the charge status lamp will continue to blink (see fig. 3 (B)).

You can fully charge the shaver in 1 hour if the LED display shows "low" (low).

The battery capacity monitor indicates the charge remaining in the battery in 3 levels (high/mid/low). The unit can be used once or twice more after the "low" (low)

starts to blink. (Differs depending on the use situation.)

A full charge will supply enough power for approx. 14 shaves (3 minutes per shave for a normal beard). Before travelling, charge it fully for 1 hour if you will not be taking the adaptor with you.

In case your shaver is without charge, you may quick charge it for 1 shave in about 5 minutes.

Cord shaving

Connect the shaver to the power cord and plug the adaptor to the AC outlet, then turn the shaver on.

If the shaver does not run, charge it for approx. 1 minute.

Using your shaver

Caution – The system outer foil is very thin and can be damaged if handled improperly. Before each use, always check the foil for damage. To avoid personal injury, do not use if the foil or other parts of the shaving head is damaged.

Push the 0/1 switch to turn the shaver on.

If you push and hold the 0/1 switch for more than 2 seconds, it will activate the turbo mode for “sonic” vibration cleaning.

(see “Cleaning your shaver”)

Caution:

Shaving with “sonic” vibration may damage your skin. Please turn it off and on again to deactivate the turbo mode.

Do not place fingers on the 0/1 switch during use.

This may cause the shaver to stop during use or change it to the “sonic” vibration cleaning mode.

Hold the shaver at a right angle (90°) to your skin (see fig. 4). Start out shaving by applying gentle pressure to your face. Stretch your skin with your free hand and move the shaver back and forth in the direction of your beard. You may gently increase the amount of pressure as your skin becomes accustomed to this shaver. Applying excessive pressure does not provide a closer shave.

System outer foil

(see fig. 5)

System outer foil has a slit blade (a) between 2 foils (b). They move up and down independently to follow the contours of your face.

The slit blade catches and cuts longer and lying hairs easily.

Using the trimmer

(see fig. 6)

Slide the trimmer handle up to open the trimmer.

Place the trimmer at a right angle to your skin and move it downward to trim sideburns.

Cleaning your shaver

(see fig. 7)

Warning – To prevent electric shock or personal injury, disconnect the power cord from the shaver before cleaning with water.

The following is the symbol of washable shaver.



The symbol means that the handheld part may be cleaned under water.

For cleanliness and convenience, we recommend that you clean your shaver with water and a liquid hand soap. Regular cleaning will keep your shaver in good condition while preventing odors or bacteria from developing, and maintain the cutting performance.

With the system outer foil in place, apply some hand soap onto the outer foil.

Push and hold the 0/1 switch for more than 2 seconds to activate the

turbo mode for “sonic” vibration cleaning.

At the same time, the lamps of the Battery capacity monitor will flash around randomly.

Pour some water over the outer foil. After about 20 seconds, it will be automatically turned off, or you can turn it off by pushing the 0/1 switch.

Remove the system outer foil and push the 0/1 switch for more than 2 seconds to activate the turbo mode for “sonic” vibration cleaning and clean it with running water.

The “sonic” vibration cleaning does not work while cord shaving.

Wipe off any moisture from the shaver with a dry cloth and dry it without the system outer foil.

Lubrication

(see fig. 13)

To maintain shaving comfort for a long time, it is recommended that the oil provided with the shaver is used.

1. Switch off the shaver.
2. Apply one drop of oil to each of the outer foils.
3. Raise the trimmer and apply a drop of oil.
4. Switch the shaver on, and run it for approximately five seconds.
5. Switch off the shaver, and wipe off any excess oil from the outer foils with a soft cloth.

Brush cleaning

Squeeze the foil frame release buttons and lift the foil frame upward to remove it (see fig. 9). Remove the inner blades one at a time by grasping it firmly at both ends and pulling it straight away from the shaver. Clean the outer foils, the shaver body and the trimmer with the long brush (see fig. 10). Clean the inner blades with the short brush by moving it in the direction in fig. 11 (A). Do not move the brush in the direction in fig. 11 (B), as it will damage the inner blade, and its cutting performance. Do not use the short brush to clean the outer foils.

Replacing shaving head components

It is recommended that you replace the system outer foil at least once a year and the inner blade at least once every 2 years to maintain your shaver's cutting performance.

Replacing the system outer foil (see fig. 8)

Squeeze the system outer foil release buttons and lift the system outer foil upward to remove it. To insert the new system outer foil, press down until it snaps into place.

Replacing the inner blades (see fig. 9)

Squeeze the system outer foil release buttons and lift the foil frame

upward to remove it. Remove the inner blade one at a time by grasping it firmly at both ends and pulling straight away from the shaver.

Do not touch the metal parts of inner blades.

To insert the new inner blade, hold the blade one at a time at both ends and press downward until it snaps into the shaver.

For environmental protection and recycling of materials

This shaver contains a Lithium-ion battery.

Please make sure that the battery is disposed of at an officially assigned location, if there is one in your country.

How to remove the built-in rechargeable battery before disposal of the shaver (see fig. 12)

WARNING:

Do not attempt to replace the battery for the purpose of reusing the shaver. This could result in the risk of fire or electric shock.

The battery in this shaver is not intended to be replaced by consumers. However, the battery may be replaced at an authorized service center. The procedure described below is intended only for removal of

the rechargeable battery for the purpose of proper disposal.

1. Disconnect the power cord from the shaver when removing the battery.
2. Remove the back panel screw (a).
3. Remove the trimmer (b).
4. Slide the back panel (c) and remove it.
5. Remove the side panels (d).
6. Remove the three housing screws (e).
7. Remove the housing (f).
8. Lift the battery (g) and remove it.

Caution

- Do not charge the shaver, where it will be exposed to direct sunlight or a heat source, or where there is a lot of moisture.
- Use only the included adaptor RE7-27 to charge the ES8801 shaver.
- Dry the shaver completely before charging it.
- The shaver and adaptor will become slightly hot during use or charging, however this is not a malfunction.
- Keep the adaptor away from water and handle it only with dry hands.
- Grip the adaptor when disconnecting it from an AC outlet; tugging on the power cord may damage it.
- Store the adaptor in a dry area where it will be protected from damage.

- Do not pull, twist, or severely bend the power cord.
- Do not wrap the power cord tightly around the appliance.
- If the power cord gets damaged, it alone can not be replaced. Contact an authorized service center.
- In cases where static noise is emitted from the television during use or recharging, connect the adaptor to a different outlet.
- Do not touch the edge (metal part) of the inner blade. Failure to observe this may lead to hand injuries.
- Wash the shaver in tap water. Do not use salt water or boiling water. Also, do not use cleaning products that are designed for toilets, bathrooms or kitchen appliances. Do not submerge the shaver for a long time.
- Do not wipe any part of the shaver with thinner, benzine or alcohol. Clean it by using a cloth dampened with soapy water.
- Do not take the housing apart as this can affect the watertight construction.
- Do not clean with water when the shaver is connected to the power cord.
- When cleaning the shaver with water, do so with both the inner blades attached. (Doing so with only one of the inner blades attached makes an abnormal noise and may damage the shaver.)

- Keep the unit away from children.
- Keep instructions in a safe place.
- The unit is applied to the Chinese standard GB4706.1 appendix B and GB4706.9.
- Contact an authorized service center if you have any questions about maintenance service, inquiry, etc.

Specifications

Power source: 100-240V AC, 50-60Hz (Automatic voltage conversion)

Motor voltage: 3.6 V DC

Charging time: 1 hour

This product is intended for household use only.

各部分名称

(见图1)

- Ⓐ 保护盖
- Ⓑ 外刀网
- Ⓒ 内刀头
- Ⓓ 外刀网释放按钮
- Ⓔ LED显示灯
- Ⓕ 电池电量显示灯
 - Ⓕ-a High (高)
 - Ⓕ-b Mid (中)
 - Ⓕ-c Low (低)
- Ⓖ 充电状态指示灯
- Ⓗ 0 / 1开关
- Ⓘ 修剪刀
- Ⓢ 修剪刀操纵杆
- Ⓚ 充电器
- Ⓛ 充电器连接线
- Ⓜ 清洁刷
- Ⓝ 油

使用前请阅读全部说明。

充电

将充电器连接线连接到剃须刀上，然后将充电器插头插入交流电源插座（见图2）。

剃须刀可在AC100至240V之间自动调节电压。
在某些地区，可能需要特殊插头转换器。

- 当首次给剃须刀充电或剃须刀已经超过6个月未使用时，在完成操作数分

钟内，充电状态指示灯可能不点亮。继续保持连接的话，过段时间就会点亮。

- 充电时，周围温度宜在15—35℃之间。
- 如充电时的周围温度与适宜温度相差较大，可能使充电时间延长或导致充电器不工作。
 - 尤其是低温会缩短充电电池的使用寿命。此种情况下，充电状态指示灯1秒钟内闪烁两次。

当剃须刀正在充电时，充电状态指示灯亮灯。充电结束时电池电量显示灯全部点亮，充电状态指示灯开始闪烁（见图3(A)）。

充电结束10分钟后，电池电量显示灯熄灭，充电状态指示灯继续闪烁（见图3(B)）。

LED显示灯显示“low”（低）时，可在1小时内给剃须刀充足电。

电池电量显示灯有高、中、低三档显示电池剩余电量。在“low”（低）电量显示开始闪烁后，剃须刀还能使用1至2次。（根据使用情况而变化）。

充足电后大约可提供14次剃须所需的电量（一次剃须约为3分钟）。

旅行前，若不想随身携带充电器，请充电1小时，将电充足。

如剃须刀无电，充电5分钟可供1次使用。

交流电剃须

将剃须刀通过充电器连接至交流插座，并开启剃须刀开关。

如果剃须刀不运转，请先充电约1分钟。

使用电动剃须刀

注意—剃须刀的外刀网非常薄，若操作不当可能会损坏。每次使用之前，请务必确认外刀网是否损坏。为了避免人身伤害，若外刀网或剃须刀头已损坏，请不要使用。

按0 / 1开关打开剃须刀电源。

若按住0 / 1开关并保持2秒钟以上，将启动涡轮模式进行“sonic”（声波）振动清洗。

（见“清洁剃须刀”）

注意：

在“sonic”（声波）振动时剃须可能会弄伤皮肤。请按0 / 1开关关闭电源然后再打开，取消涡轮模式。

使用过程中请不要将手指放在0 / 1切换开关上。

否则可能会使剃须刀在使用过程中停止或切换到“sonic”（声波）振动清洁模式。

将剃须刀与皮肤成直角（90度）位置（见图4），适度用力于脸颊并开始剃须。请用另一只手绷紧脸上的皮肤并将剃须刀逆着胡子的生长方向前后移动。当您的皮肤开始习惯此剃须刀时，您可以稍微增加下压的力量。但施加过分的压力不能为您带来更服帖的剃须效果。相反，对初次使用者可能会造成皮肤伤害。

外刀网

（见图5）

外刀网由两侧刀网（b）和中间的切割

刀刃（a）构成。它们都能按照您面部轮廓独立地上下浮动。

切割刀刃能轻易地捕捉并剃除较长的胡子。

使用修剪刀

（见图6）

将修剪刀操纵杆向上推，推出修剪刀。将修剪刀与皮肤成直角（90度）的位置向下移动以修剪鬓角。

清洁剃须刀

（见图7）

警告—为防止电击或使用者遭受体伤，用水清洁剃须刀前请务必将充电器连接线和剃须刀完全分离。

下面符号表示可清洗剃须刀。



这个符号表示手持部分可以在水中进行清洗。

为了保持清洁与功效，我们建议您使用清水或洗手液清洗剃须刀。定期清洗可以让剃须刀处于良好的工作状态，防止异味或滋生细菌，并保持剃须功效。

外刀网安装完毕后，滴少许洗手液在其上面。

若按住0 / 1开关并保持2秒钟以上，将启动涡轮模式进行“sonic”（声波）振动清洗。此时，电池电量显示灯会随机闪烁。

在外刀网上倒些水。声波清洗持续20秒左右会自动停止，也可以按0 / 1开关将其关闭。

拆下外刀网并按住0/1开关2秒钟以上，以启动涡轮模式进行“sonic”（声波）振动清洗，然后用流动的水清洗。

用交流电剃须时“sonic”（声波）振动清洗不工作。

用干布拭去剃须刀机身上的水分，在不装外刀网的状态下使其干燥。

润滑油

(见图13),

为了保持长时间的剃须舒适，建议使用随剃须刀一起提供的油。

1. 关掉剃须刀。
2. 在每一个外刀网上加一滴油。
3. 提起修剪刀，加一滴油。
4. 启动剃须刀，然后运行约5秒钟。
5. 关掉剃须刀，然后用软布擦去外刀网上多余的油。

刷子清洁

按下外刀网释放按钮，将其向上提起并拆下（见图9）。握住内刀头两端并向上从剃须刀拉出，将内刀头卸下。使用长毛刷子清洁外刀网、剃须刀机身与修剪刀（见图10）。使用短毛刷子依照图11(A)的移动方向清洁内刀头。请勿按图11(B)所示方向移动清洁刷，否则可能会损伤内刀头及其锋利程度。切勿使用短毛刷子清洁外刀网。

更换剃须刀头零件

建议外刀网每年更换一次，内刀头每二年更换一次，以维持剃须刀切割性能。

更换外刀网

(见图8)

按下外刀网释放按钮，将外刀网向上拉

出。插入新的外刀网时，按下直至固定位置为止。

更换内刀头

(见图9)

按下外刀网释放按钮，将外刀网向上取出。用力握住内刀头的两端，并逐一将内刀头从剃须刀内拉出，以取下内刀头。请勿触摸内刀头的金属部分。

要插入新的内刀头时，握住内刀头两端并逐一将内刀头按下，直至固定位置为止。

环境保护与资源回收

本电动剃须刀使用锂电池。

如果您的国家有相关规定，则旧电池一定要在指定处理的地方统一处理。

在弃置剃须刀之前，如何拆除内置的蓄电池

(见图12)

警告—请不要为了重新使用剃须刀而擅自更换电池。否则可能会导致火灾或触电。

消费者不应自行更换本剃须刀内的蓄电池。如需更换，请到松下电器授权之服务中心更换。以下所述程序仅供拆除该蓄电池之用，并请妥善处理。

拆除电池之前，剃须刀应处于关闭状态。

1. 拆卸电池时，要将电源线从剃须刀上拔下。
2. 卸下背面面板螺丝 (a)。
3. 卸下修剪刀 (b)。
4. 滑动背面面板 (c) 并卸下。
5. 卸下侧面面板 (d)。

6. 卸下3个外壳螺丝 (e)。
7. 卸下外壳 (f)。
8. 提起电池 (g) 并卸下。

注意事项

- 切勿在受阳光直射、接近热源以及湿气重的地方进行充电。
- 限使用所附的充电器RE7-27给ES8801剃须刀充电。
- 充电之前，必须将剃须刀完全晾干。
- 在使用或充电时，剃须刀和充电器可能会稍有发热，这并不是故障。
- 充电器应远离潮湿的地点，使用时手必须是干的。
- 欲自交流插座拔下充电器时，请握紧充电器。拉扯充电器连接线可能会损毁连接线。
- 请将充电器放置在干燥区域以免受到损毁。
- 勿拉扯、扭转或过度弯曲充电器连接线。
- 勿用充电器连接线紧紧缠绕在电器四周。
- 若电源线被损坏，不能单独更换电源线。请与授权的维修服务中心联系。
- 如果使用或充电时从电视机发出静电噪音，请将充电器插头转接至其它插座。
- 请不要触摸内刀头的刀刃(金属部分)。

忽视该注意事项可能会导致手受伤。

- 只可用自来水清洗剃须刀，切勿使用盐水或沸水清洗剃须刀，同时请勿使用厕所、浴室或厨房专用的清洁剂用品来清洗。
- 切勿以稀释剂、挥发油或酒精擦拭剃须刀任何部位，请使用沾有肥皂水的湿布清洗。
- 请勿拆解机体，否则会影响防水构造。
- 清洗剃须刀时请务必断开交流电源，使充电器连接线和剃须刀完全分离。
- 当用水清洗剃须刀时，请在装有两个内刀头的状态进行清洗。(若在仅装有一个内刀头的状态进行清洗，可能会发出异常噪音并损坏剃须刀)。
- 请勿让儿童接触本剃须刀。
- 请把说明书放在安全的地方。
- 本剃须刀适用中国标准GB4706.1附录B和GB4706.9。
- 有关维修服务、咨询方面的任何问题，请联系经授权的服务中心。

规格

电源：100-240V AC，50-60Hz（自动电压转换）

电机电压：3.6V DC

充电时间：1小时

本产品限家庭使用。

制造厂商: 松下电工株式会社
地 址: 日本大阪府门真市门真1048
Matsushita Electric Works, Ltd.
1048, Kadoma, Osaka 571-8686, Japan