

Panasonic®

Card Sized Shaver

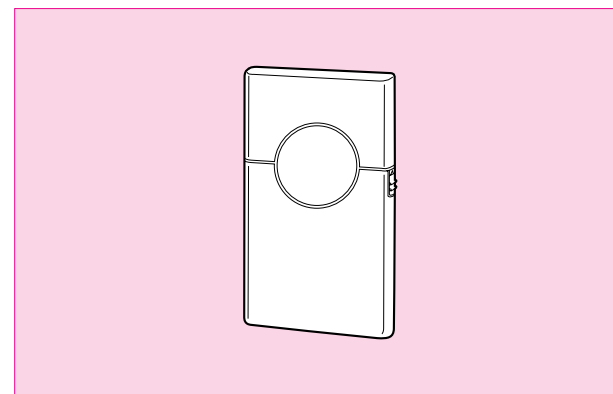
卡片式电动剃须刀

Operating Instructions

使用说明书

Model No. ES5801

型号 ES5801



制造厂商: 松下电工株式会社
地 址: 日本大阪府门真市门真1048

Matsushita Electric Works, Ltd.
1048, Kadoma, Osaka 571-8686, Japan

No.1 EN, CH (中国)

Printed in Japan

Before operating this unit, please read these instructions completely.
Thank you for purchasing the Panasonic Card Sized Shaver Model No. ES5801.

在使用前, 请仔细阅读此说明书。

承蒙选购Panasonic ES5801型电动剃须刀, 在此谨致谢意。

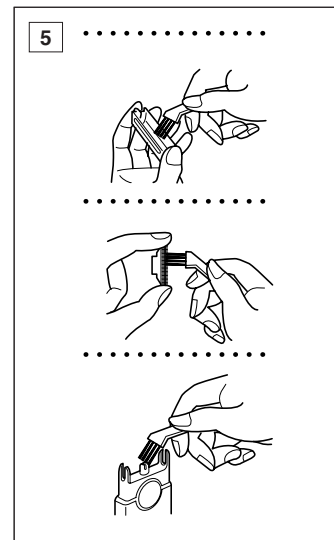
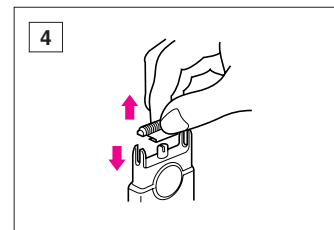
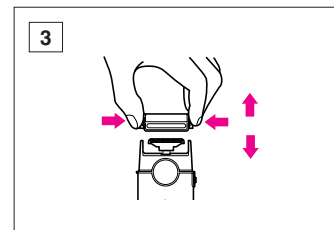
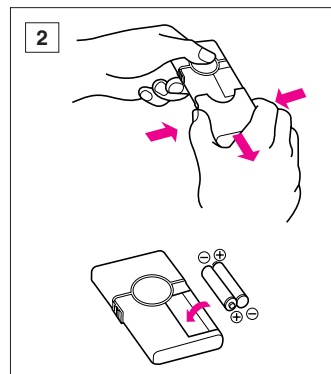
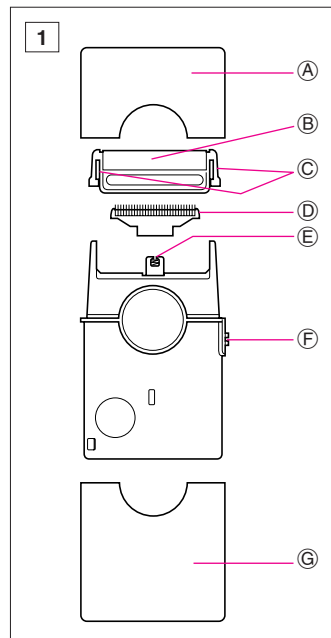
Caution

注意书



- The outer foil is very thin and should not be exposed to excessive pressure or impact which may deform or damage it.
外刀网薄而精密，使用不当容易引起变形或损坏。
- If the outer foil is deformed or damaged, do not shave with it, because skin irritation can result.
外刀网若变形或损坏，请勿继续使用，以免损伤皮肤。
- Both the foil and the blade have a limited service life. To keep a better result, we suggest you to replace the outer foil and the inner blade as the following standard.
刀具是有使用期限的，为保持良好的效果，我们建议您按下列标准进行更换。
Standard life. (based on use for 3 minutes. once a day)
刀具更换标准：（每天 1 次，每次使用 3 分钟）
Outer foil approximate 1 year
外刀网 约 1 年
Inner Blade approximate 2 year
内刀头 约 2 年
- Both the foil and the blade are available in the department store or Panasonic service station.
所需更换的 Panasonic 刀具可到附近百货店或特约维修店购买。

Panasonic
电动剃须刀



Specifications

Power source : Two DC 3V LR-3 (AAA/UM-4) alkaline batteries (not included)

Attachment : clean brush, soft case

规格

电源 : DC3.0V AAA,LR3 UM-4(7号)碱性干电池 2 节
(不包括)

附件 : 小刷子、软袋

Before use

This unit will give you excellent service over a long period if you follow a few simple suggestions. This booklet is designed to help you get the best possible use from this unit.

READ ALL INSTRUCTIONS BEFORE USE.

Parts identification

(See Fig. 1)

A Protective cap

Keep it on the shaver when the shaver is not in use. To remove it, put upward.

B Outer foil

This is a precision foil. Do not handle it roughly. Dropping the shaver can result in damage to this delicate foil.

C Foil cassette release button

D Inner blade

E Inner blade mount

F Switch

Slide the switch upward to turn the shaver on.

G Bottom cover

Replacing batteries

(See Fig.2)

When the blade speed decreases, this indicates that the batteries should be replaced with new ones. Do not use this shaver with weak batteries.

Turn the shaver so the bottom is facing up and remove the bottom cover.

Insert two LR-3 alkaline (AAA/UM-4) batteries observing the Positive (+) and Negative (-) positions indicated beside the battery compartment.

Attach the bottom cover.

- Do not press the razor area when attaching the cover.

Do not combine an old battery with a new one, or use different types of batteries together.

- LR-3 alkaline (AAA/UM-4) batteries allow one month of usage, assuming one two-minute shave each day.

- Remove the batteries when not using the appliance for a long time.

Using your shaver

Remove the protective cap then switch the shaver on. Using light pressure, move the shaver against the direction of beard growth.

Maintenance Cleaning

Push the foil cassette release button and detach the foil frame as shown. (See Fig. 3)

Grasp inner blade firmly at each side, and pull straight up. (See Fig. 4)

Clean away the clippings with the cleaning brush provided. (See Fig. 5)

Reassemble the shaver parts in the reverse order.

Replace the outer foil

(See Fig. 3)

Squeeze the foil cassette release buttons and lift the outer foil upward to remove it.

Insert the new outer foil

(See Fig. 3)

Press down until the outer foil snaps into place.

Replace the inner blade

(See Fig. 4)

Remove the inner blade by grasping it firmly at both sides and pulling straight away from the shaver.

Insert the new inner blade

(See Fig. 4)

Hold the inner blade at both sides and guide it onto the inner blade mount. Press it firmly into the mount until it snaps in place.

Caution

Do not wash with water.

- It may damage the shaver.

Do not leave the shaver where the temperature is below 0°C (32°F) or above 40°C (104°F), where it will be exposed to direct sunlight or a heat source, or where there is much moisture.

Do not wipe the shaver body using anything other than mild soapy water.

- It may alter the color of the shaver.

Do not use the shaver if it has a damaged foil and/or blade, as injury can result.

Use this shaver for its intended use, as described in this manual.

使用前

只要您能根据一些简单的建议来使用本机的话，那么本机将会给您带来很好的服务，而且能延长使用寿命。本说明书就是为了使您能正确地使用本机而编制的。

请在使用前仔细阅读本说明。

各部分的名称

(参见图1)

Ⓐ 保护盖

不使用时请勿取下保护盖。使用时，将其往前推并取下。

Ⓑ 外刀网

这是很精致的罩网，请仔细使用。切勿将剃须刀掉落地上或敲打剃须刀均会损坏罩网。

Ⓒ 外刀网释放按钮

Ⓓ 内刀头

Ⓔ 内刀头安装基座

Ⓕ 开关

将开关往上推，即可启动剃须刀。

Ⓖ 底盖

更换电池

(参见图2)

如果剃须刀转速慢，则说明应该更换新的电池。请不要在电池微弱的情况下使用本剃须刀。

从本体背面卸下底盖。

根据电池盒边上所标注的正 (+)、负 (-) 位置，装入两节 AAA，LR3 UM-4 (7号) 碱性电池。

装上底盖

- 装上时请不要压住刀网部分。请不要将新电池和旧电池混合使用，也不要使用不同型号的电池。
- 如果每天使用1次每次2分钟的话，碱性干电池大约可以使用1个月。
- 如果长时间不使用剃须刀时，请取出电池。

使用剃须刀

取下保护盖，然后打开剃须刀的开关。使用时请轻而有力地将剃须刀与皮肤垂直地进行移动剃须。

保养

清洁

按下外刀网释放按钮，然后按图3所示取下刀网。

紧紧捏住内刀头的两端往外拉（参见图4）。然后用配备的清洁刷将刀头的脏物刷去（参见图5）。清洁完后，按照与卸下时相反的步骤装上各部件。

更换外刀网

（参见图3）

按下外刀网释放按钮，然后往上取下外刀网。

装入新的外刀网

（参见图3）

请注意务必使外刀网固定在基座上。

更换内刀头

（参见图4）

紧紧捏住内刀头的两端然后将其往外拔出。

装入新的内刀头

（参见图4）

捏住内刀头的两端，然后将其装入内刀头安装基座上。注意请将其牢固地安装在基座上。

注意

不要用水冲洗，否则会引起故障。请不要在以下情况下放置剃须刀干电池，即温度低于0℃（32°F）或高于40℃（104°F）时、或将剃须刀直接处于太阳的照射下或接近热源之处、以及潮湿的地方。只可使用稀释后的肥皂液擦洗本体。

如果使用浓厚肥皂液或其它洗涤剂的话，会使本体变色。

若外刀网或内刀头损坏时，切勿使用剃须刀，因为有可能引起伤害事故。

请按照本说明书所述的方法使用本剃须刀，切勿用于其它方面。