

User's Guide of VGA Card

(nVidia4104 V1.0)

Catalogue

I. Driver installation	1
1)Installing DirectX	1
2)Installing VGA card's driver	1
II. Display setup	3
III. Precautions	3
Declaration	4

I. Driver installation

1) Installing DirectX

If your operation system is Windows98 SE or Windows2000, we strongly recommend you install DirectX 8.1 or higher version before installing VGA card's driver to get a better performance of the VGA card. DirectX8.1 is supplied in "legend computer driver" CD. Please choose the respond directory to install DirectX8.1. Taking Windows 98SE as an example, the detailed procedure is as the following:

1. Insert "Legend computer driver" CD into the CD-ROM , click "Start" on the task bar at the left down corner of the screen, then click "Run";
2. click "Browse" and open the directory "?:\DX81eng\Win98_ME" in the CD(? Represents the driver letter of your computer's CD-ROM), select DX81eng.exe and click "open";
3. "?:\DX81eng\Win98_ME\DX81eng.exe" displays in the "open" bar. (? Represents the driver letter of your computer's CD-ROM).
4. single click "Ok" and click "yes", then another "yes" by the screen prompt. Restart the computer to finish the setup.

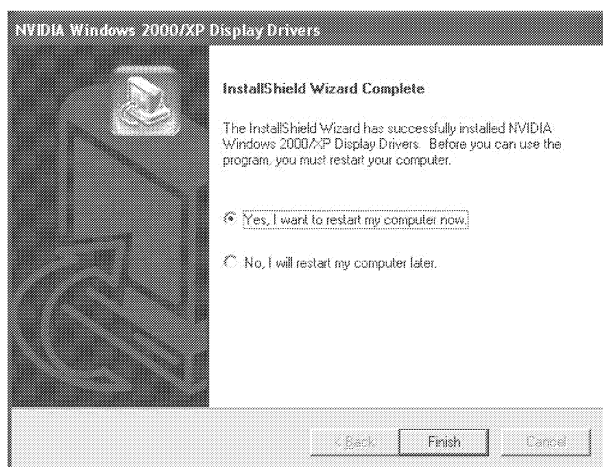
2) Installing VGA card's driver

If your system is Windows98 SE, please open the directory "Lx_vga\nVidia4104\win98" in the CD and run setup.exe; if your system is Windows2000 or WindowsXP, please open the directory "Lx_vga\nVidia4104\winXP_2000" in the CD and run setup.exe; if your system is WindowsNT, please open "Lx_vga\nVidia4104\WinNT" in the CD and run setup.exe.

Taking Windows XP as an example. After running Setup.exe, the window "NVIDIA Windows 2000/XP Display Driver" appear.




Single click "next" button to start installing.



After copying the files, please select "Yes, I want to restart my computer now" then click "Finish", the system will reboot automatically and the driver's installation will complete.

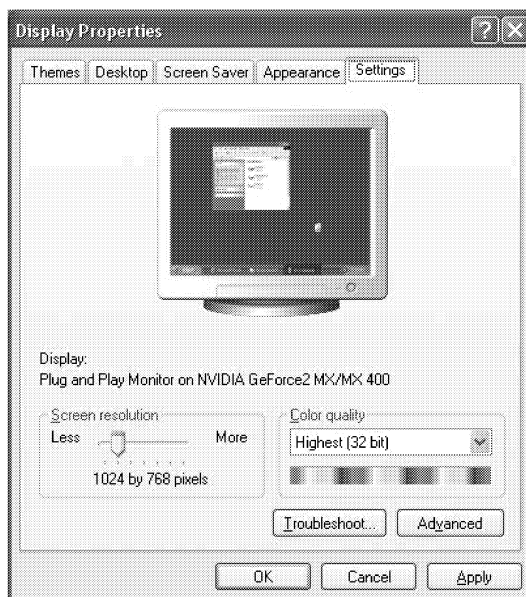
If your system is Windows98 SE, Windows2000 or WindowsNT, the installing procedures are similar with the procedures under WindowsXP.

 **Notices:** When installing VGA card under Windows NT 4.0, you need to install NT 4.0 Service Pack 3 or higher version before the driver's installation.

II. Display setup

Taking Windows XP as an example:

Single click the right key of the mouse at the desktop's blank area; select "properties" from the popped menu; enter the interface of "setting"; adjust resolution in the "screen area"; adjust color in the "colors" area. Click "advanced" and adjust refresh rate in the "adapter".



Display Card

III. Precautions

1. This VGA card BIOS is specifically designed for Legend computers and please do not use any other VGA card BIOS to upgrade this BIOS, otherwise this VGA card may not be able to work properly and give you unnecessary troubles.
2. We strongly recommend you read the monitor guide well before adjusting the display mode, confirm the refresh rate and resolution your monitor supports before adjusting in order to prevent any possible damages caused

by over refresh rate or too high resolution. If you are not sure the display mode your monitor supports, please inquire the technical service department of Legend.

Declaration

If you find the content of this manual different from previous manuals or your actual operations, it is because of the improvement of our system's hardware and software. There will not be prior notifications.