

User's Guide of GeForce2 MX400 VGA Card
(nVidia Ver2832 V1.1)

Catalogue

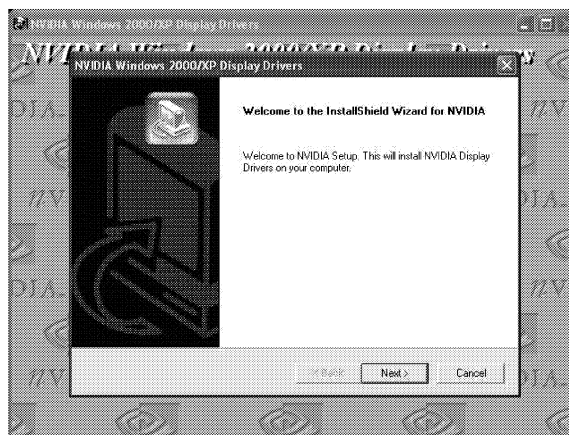
I. Driver installation	1
1. Windows XP	1
2. Windows 9X	2
3. Windows2000	3
4. Windows NT 4.0	3
II. Display setup	4
III. Precautions	4
Declaration	5

I. Driver installation

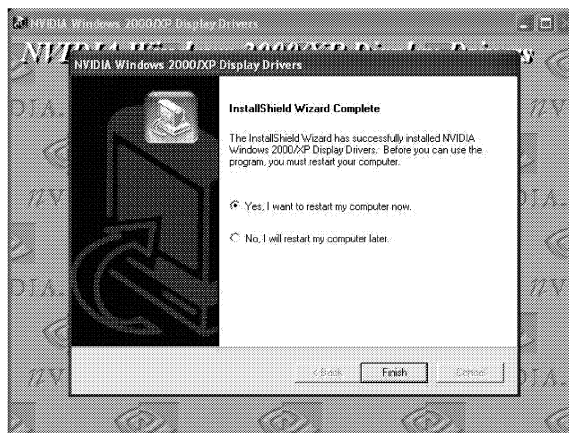
1. Windows XP

Taking Windows XP as an example. Boot up Windows XP and insert "Legend computer driver" CD into the CD-ROM.

- 1) Please open the directory "?:\Lx_vga\nVidia2832\Winxp_2000" in the CD (? Represents the driver letter of your computer's CD-ROM), double click the file "setup.exe", then click "next" button;



- 2) After copying the files, please select "Yes, I want to restart my computer now" then click "Finish", the system will reboot automatically and the driver's installation will complete.



2. Windows 9X

Boot up Windows98SE and insert "Legend computer driver" CD into the CD-ROM.

2.1 Installing DirectX

To get a better performance of the VGA card, you need to install DirectX 8.1 or higher version before installing VGA card's driver. Please install DX81eng.EXE file, the detailed procedure is as the following:

- 1) click "Start" on the task bar at the left down corner of the screen , then click "Run";
- 2) click "Browse" and open the directory "?:\DX81eng\Win98_ME" in the CD (? Represents the driver letter of your computer's CD-ROM), select DX81eng.exe and click "open";
- 3) "?:\DX81eng\Win98_ME\DX81eng.exe" displays in the "open" bar. (? Represents the driver letter of your computer's CD-ROM).
- 4) single click "Ok" and click "yes", then another "yes" by the screen prompt. Restart the computer to finish the setup.

2.2 Installing VGA card's driver

- 1) Please open the directory "Lx_vga\nVidia2832\Win98" in the CD, double click the file "setup.exe",then click "next" button
- 2) After copying the files, please select "Yes, I want to restart my computer now" then click "Finish" , the system will reboot automatically and the driver's installation will complete.



Notices: Under Windows95, the process is the following:

- a. install the motherboard's USB device driver(this can be downloaded from Microsoft web site);
- b. install motherboard's driver;
- c. install VGA card driver (which is similar with the procedures under


Windows98).

3. Windows2000

Boot up Windows2000, insert "Legend computer driver" CD into the CD-ROM and install by the following procedures:

- 1) Please open the directory "Lx_vga\nVidia2832\Winxp_2000" in the CD, double click the file "setup.exe", then click "next" button;
- 2) After copying the files, please select "Yes, I want to restart my computer now" then click "Finish" , the system will reboot automatically and the driver's installation will complete.

4. Windows NT 4.0

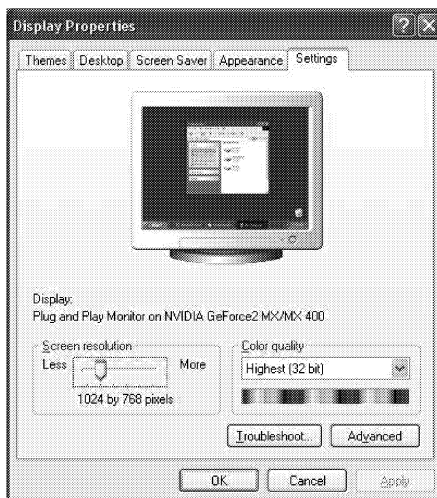
 Notices: When installing VGA card under Windows NT 4.0, you need to install NT 4.0 Service Pack 3 or higher version before the driver's installation.

Boot up the Windows NT 4.0, insert "Legend computer driver" CD into the CD-ROM and install as follows:

- 1) Please open the directory "Lx_vga\nVidia2832\WinNT" in the CD, double click the file "setup.exe", then click "next" button;
- 2) After copying the files, please select "Yes, I want to restart my computer now" then click "Finish" , the system will reboot automatically and the driver's installation will complete.
- 3) When entering Windows NT 4.0, there will be the window of "invalid display settings" (please note that this window will only come up when the first time you boot up the system after driver's installation); select "ok" and then you can adjust resolution, color and refresh rate.

II. Display setup

Taking Windows XP as an example. Single click the right key of the mouse at the desktop's blank area; select "properties" from the popped menu; enter the interface of "setting"; adjust resolution in the "screen area"; adjust color in the "colors" area. Click "advanced" and adjust refresh rate in the "adapter".



The display setup of Windows98SE , Windows2000 and Windows NT 4.0 is similar with Windows XP.

III. Precautions

1. This VGA card BIOS is specifically designed for Legend computers and please do not use any other VGA card BIOS to upgrade this BIOS, otherwise this VGA card may not be able to work properly and give you unnecessary troubles.
2. We strongly recommend you read the monitor guide well before adjusting the display mode, confirm the refresh rate and resolution your monitor supports before adjusting in order to prevent any possible damages caused by over refresh rate or too high resolution. If you are not sure the display

mode your monitor supports, please inquire the technical service department of Legend.

Declaration

If you find the content of this manual different from previous manuals or your actual operations, it is because of the improvement of our system's hardware and software. There will not be prior notifications.

Display Card

