

多功能一体机 M710 快速安装指南

安全信息

- 请只使用随同此产品提供的电源，或者使用经过厂家认证的电源作为替代。
- 电源线要连接在距离此产品尽量近电源插座上，以便于使用。
- 如果需要服务或维修，除参考操作说明书以外，也可以向专业的服务人员请教。

当心：请不要在雷雨天气时使用传真功能。请不要在雷雨天气时安装此产品，或者进行任何的电线 / 电缆连接（电源线，电话线等）。

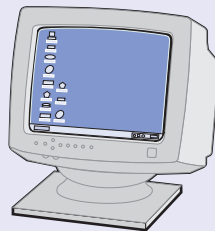
Safety information

- Use only the power supply provided with this product or the manufacturer's authorized replacement power supply.
- Connect the power supply cord to an electrical outlet that is near the product and easily accessible.
- Refer service or repairs, other than those described in the user documentation, to a professional service person.

CAUTION: Do not use the fax feature during a lightning storm. Do not set up this product or make any electrical or cabling connections, such as the power supply cord or telephone, during a lightning storm.

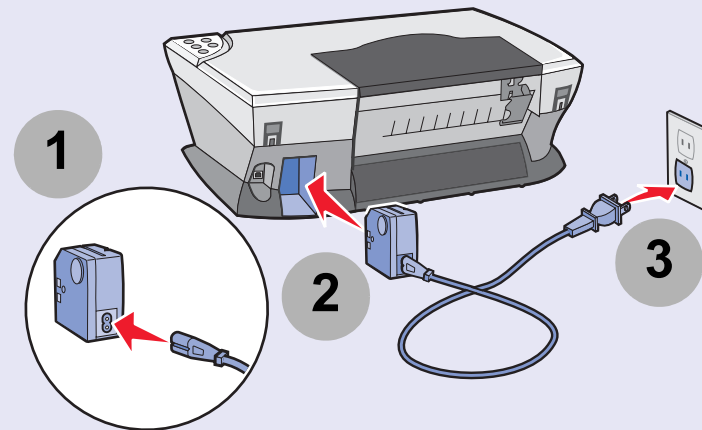
1

打开您的计算机。
Turn your computer on.



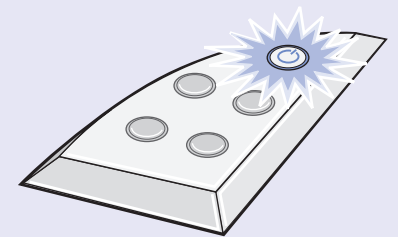
2

连接多功能一体机的电源。
Connect the power supply.



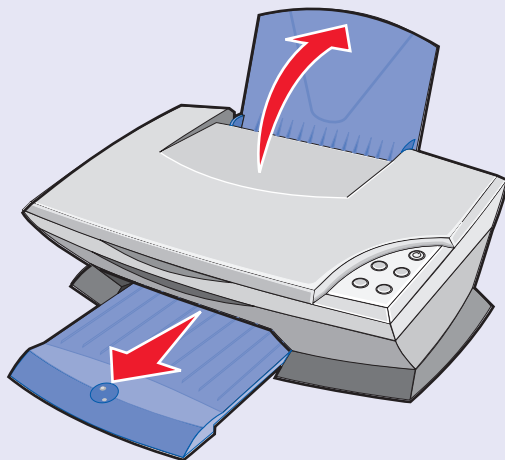
3

请确认电源指示灯亮着。
Make sure the power light is on.



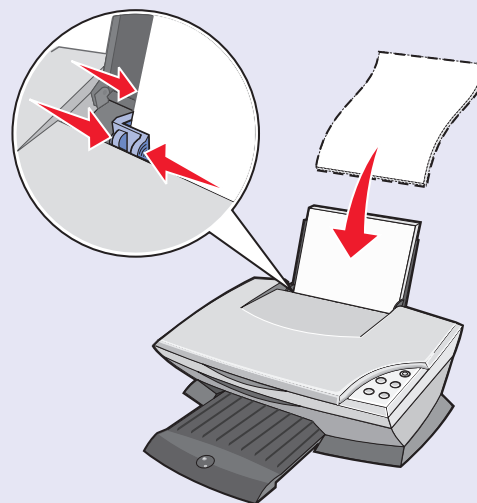
4

打开纸张支架并拉出纸托盘。
Lift the paper support, and extend the paper exit tray.



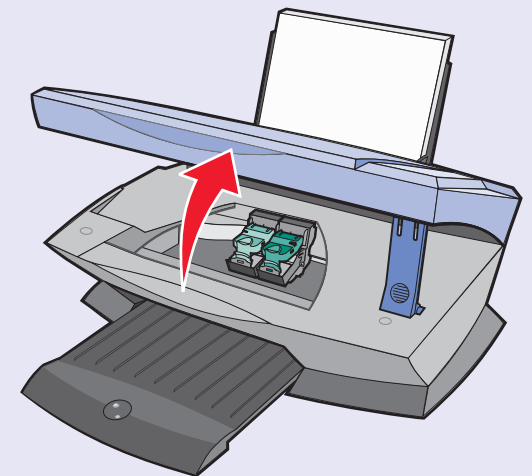
5

装入纸张并调节进纸导轨到适当的位置。
Load paper and adjust the paper guide.

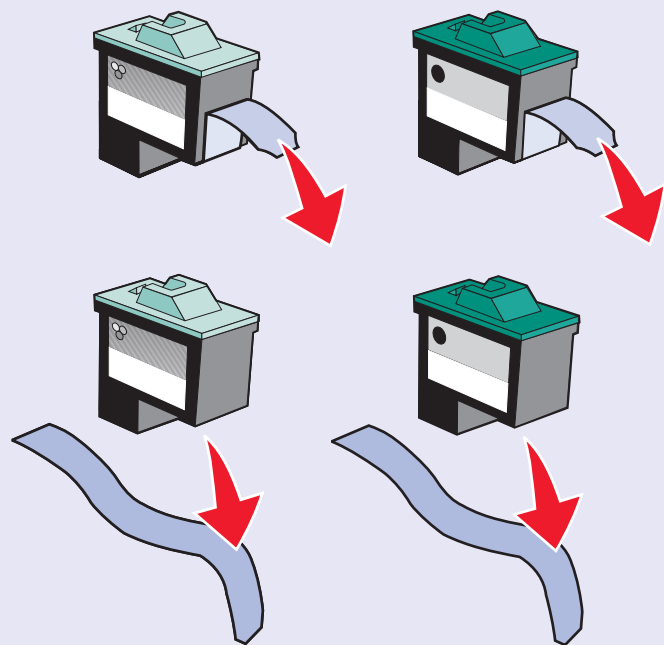


6

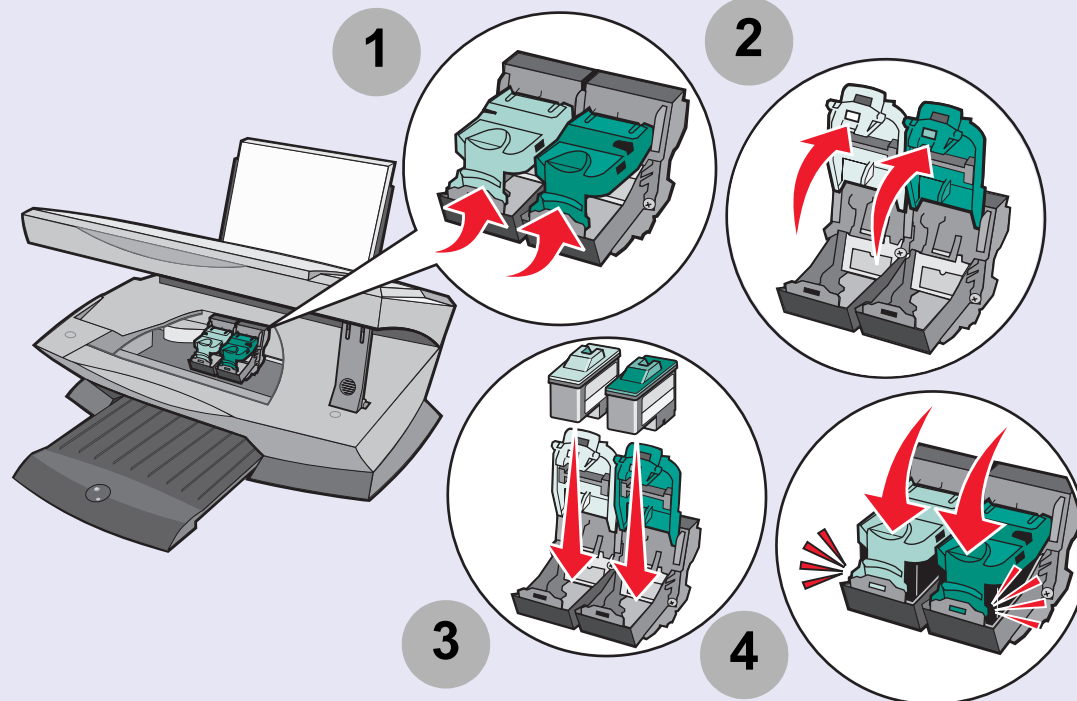
抬起扫描仪部分。
Lift the scanner unit.



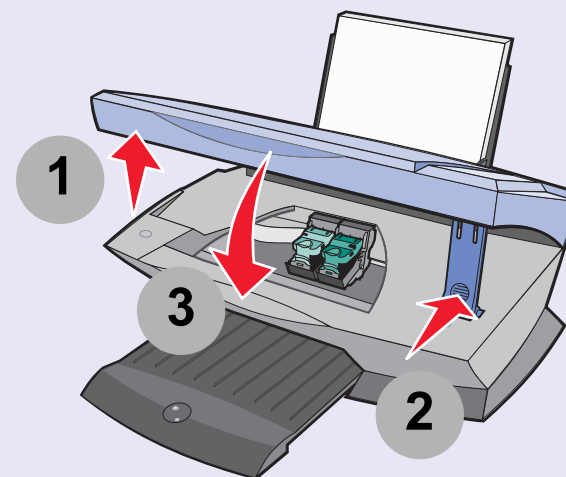
7 撕掉打印墨盒底部的透明封条。
Remove the tape.



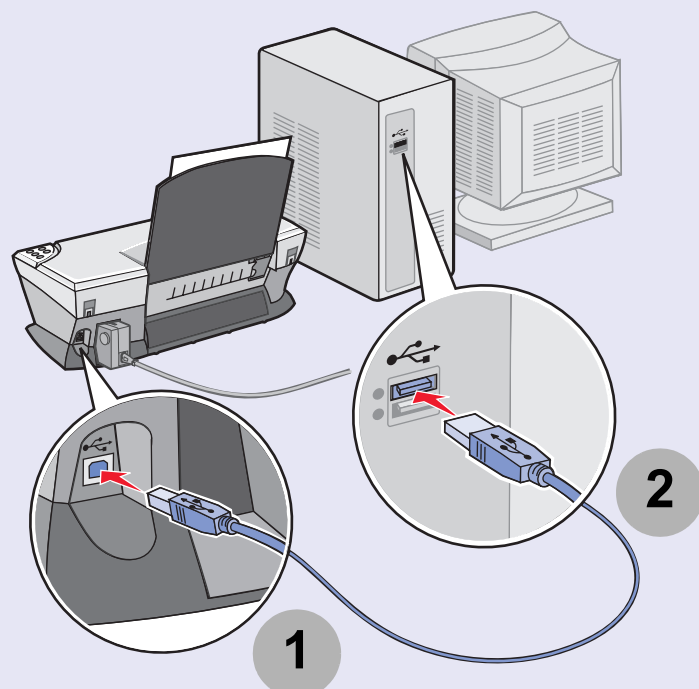
8 装入打印墨盒。
Insert the print cartridges.



9 关闭扫描仪部分。
Close the scanner unit.



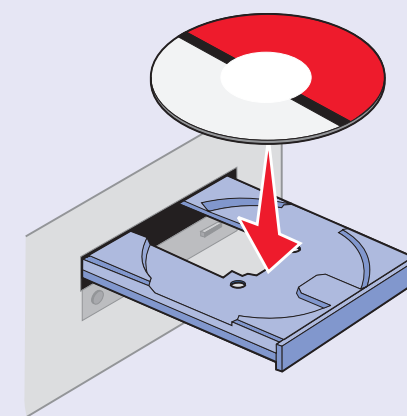
10 连接 USB 电缆。
Connect the USB cable.



11 在所有的“添加新硬件”界面中点击“取消”。
Click **Cancel** on all Add New Hardware screens.



12 插入软件光盘。
Insert the CD.



按照计算机屏幕上的提示进行操作。
Follow the instructions on your computer screen.