

## User's Guide of Legend LXB-TG2131(HW) Keyboard

## Catalogue

User's Guide of Legend LXB-TG2131(HW) Keyboard .....	1
1. General Overview .....	1
2. Driver Installation .....	1
3. Configuration of Hotkeys .....	2
4. Uninstall the Keyboard Driver .....	3

# User's Guide of Legend LXB-TG2131(HW) Keyboard

## 1. General Overview

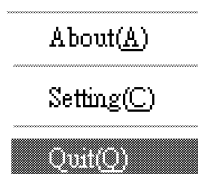
Welcome to use Legend Keyboard. It's composed of a standard keyboard (up to 104 keys) and 5 hotkeys. The hotkeys are programmed to some default functions, but you can customize them to suit your specific needs.

## 2. Driver Installation

To use the hotkeys properly, you should install Legend keyboard driver firstly. Run the setup.exe file, which is located in the Lx\_Keyboard directory of the Legend Driver CDROM. Following the instruction on the screen, click Next and Finished to complete the installation. The Legend keyboard driver is launched automatically when Windows starts up. While Legend keyboard driver is running, the Legend Special Keyboard icon is displayed in the Windows taskbar. (See picture 1)



Picture 1 Legend Special Keyboard Icon

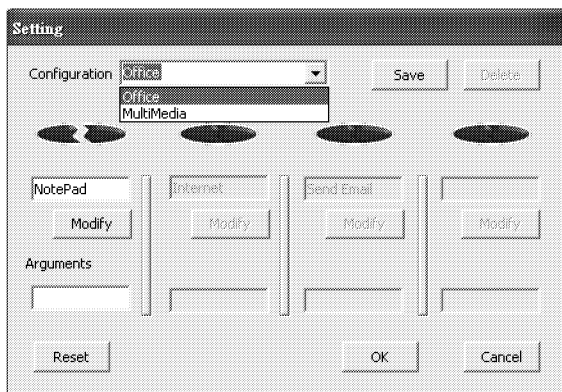


Picture 2 Popup Menu of Legend Keyboard

To disable the hotkeys, right-click the icon and select Quit from the menu (see picture 2), the keyboard driver quits from Windows, and the icon is no longer displayed in the Windows taskbar. If you want to restart the Legend Keyboard driver, select Windows Start->Programs->Startup->Legend Special Keyboard.

### 3. Configuration of Hotkeys

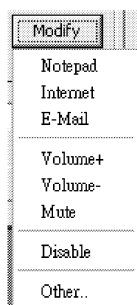
There are two default configuration, but you can modify them, add new configurations or remove them to meet your special needs.



Picture 3 Window of Hotkey Configuration

- 1) Check default functions: Right-click the Legend Special Keyboard icon in the Windows taskbar and select Setting to show the configuration window. (See picture 3). Click the Configuration ComboBox, you can see the two default configurations, one is Office configuration, in this configuration, the icons on top of the hotkeys of your keyboard indicate the function of the hotkeys. The left 3 hotkeys are defined as Notepad, Internet Explorer, Outlook Express respectively. The fourth hotkey is defined by user. The other is Multi-Media configuration, in this configuration; the icons below the hotkeys on your keyboard indicate the function of the hotkeys. The left 3 hotkeys are defined as Volume decrease, Volume increase, Mute, the fourth is defined by user.
- 2) Modify default functions: To modify the function of a hotkey, click the corresponding icon on the hotkey configuration window (see picture 3). The icon splits, and then you can modify the default function of the hotkey. Click Modify and select the function listed in picture 4. If the function that you want to define the hotkey is not listed here, click Other..., and select an executable file. Input the arguments in the Arguments textbox if needed.

Then click OK to finish the configuration. Select Office or Multi-media from the Configuration ComboBox and click Reset to restore their default configuration.



Picture 4 Menu of Hotkeys Re-configuration

- 3) Add and remove new configurations: Input the new configuration name in the configuration ComboBox, define the hotkeys respectively and click Save to create a user-defined configuration. More than one configuration can be added. Select the configuration name and click Delete to remove it, but Office and Multi-Media configuration can't be deleted.
- 4) Use the hotkeys: Pressing the hotkeys will launch the corresponding program defined in the configuration you select. For examples, when office configuration is selected, pressing the hotkeys will launch Notepad, Internet Explorer, Outlook Express and user defined program. Respectively pressing the power key will put your computer in Standby mode or shut it down. The precise behavior depends on your Windows' settings.

## 4. Uninstall the Keyboard Driver

Be sure to disable the keyboard driver before you uninstall it. Right-click the Legend Special Keyboard icon in the Windows taskbar and select Quit. Then you can use the Add or Remove Programs tool in the Control Panel to uninstall the keyboard driver.

