

STANDARDIZED
SIMPLIFIED
DOCUMENTED
TLC

TOXI-LAB[®]

YOU CAN SPOT THE DIFFERENCE

The changing colors of drug identification



NOTICE: This document contains references to Varian. Please note that Varian, Inc. is now part of Agilent Technologies. For more information, go to www.agilent.com/chem.

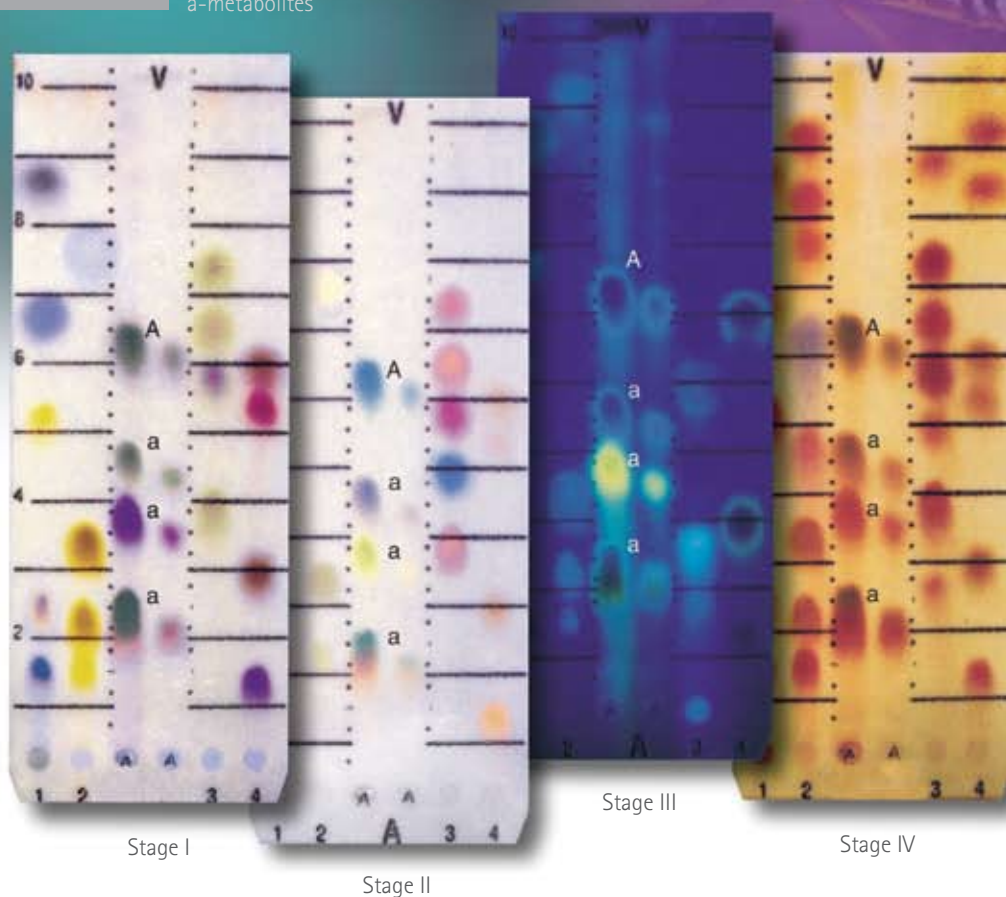
 Agilent Technologies

TOXI•LAB®

Quick and easy drug identification

TOXI•LAB A

A-Tramadol
a-metabolites



For over 30 years, the TOXI•LAB family of products has been the reliable choice for customers in the medical, industrial, forensic, and veterinary fields. Only TOXI•LAB has simplified and standardized thin layer chromatography (TLC), allowing you to quickly and easily identify specific analytes in a specimen, not just the drug class.

TOXI•LAB combines R_f with four stages of color reactions providing greater identification power than many other drug detection methods. You get reproducible results every time with TOXI•LAB's built-in quality control and extensive drug photo-documented database.

Whether your lab is new to toxicology, upgrading from classical thin layer, or looking to supplement your current methodologies, TOXI•LAB is your clear choice for simplified and standardized thin layer chromatography (TLC).

TOXI•LAB[®] Drug Detection System

It's easy to spot hundreds of

Screen for over 700 drugs—with reliable results in less than one hour.

TOXI•LAB AB

Test for over 700 illicit, prescription, and O-T-C drugs with just one analysis. The TOXI•LAB AB Drug Detection System gives you all the supplies you need—including pre-made extraction tubes, chromatograms, standards, and reagent concentrates—to get reproducible results in just one hour.

- **Comprehensive:** One simple screening method for polydrug specimens.
- **Information-rich:** Features a database with extensive US and international drug photodocumentation.
- **Cost-effective:** Low startup costs with no expensive instrument maintenance or maintenance contracts.
- **Environmentally friendly:** No spraying of reagents

The TOXI•LAB AB Procedure

TOXI•LAB AB consists of simple steps using specially modified reagents, materials, standards, and procedures. These special products and procedures significantly speed up the analysis and make results far more reproducible.



① Extraction

Pipet the sample into the extraction tube. Mix and centrifuge.



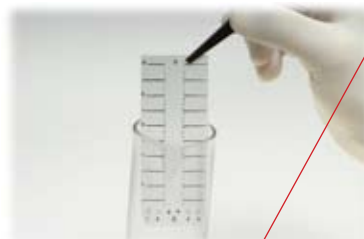
② Concentration

Place a blank disc in a concentration cup for each sample. Transfer the upper (organic) layer from the extraction tube into the cup. Evaporate the organic layer to concentrate the analyte onto the disc.



③ Inoculation

Insert the dry disc into one of the center spaces (sample channels) of the TOXI•GRAM.



④ Development

Develop the TOXI•GRAM in developing solution. Pink dye markers will migrate with the solvent front. Remove the TOXI•GRAM and dry it briefly.



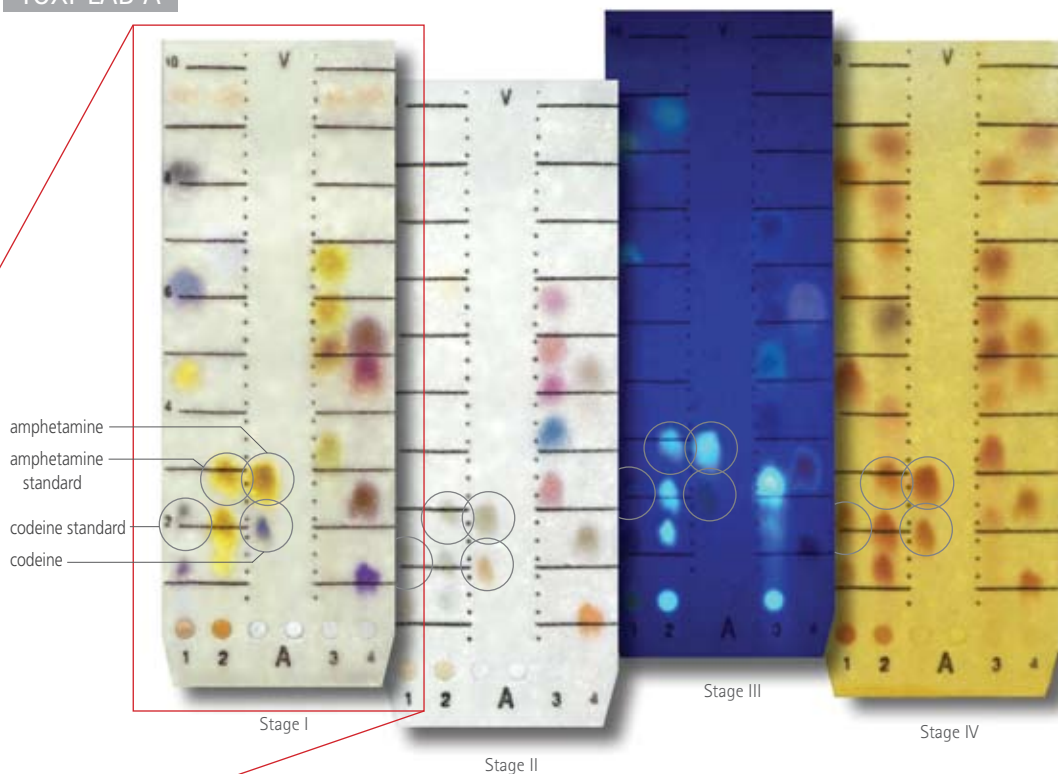
⑤ Detection

A broad spectrum of analytes can be detected and differentiated by position (R_f) and color reaction through the detection stages.

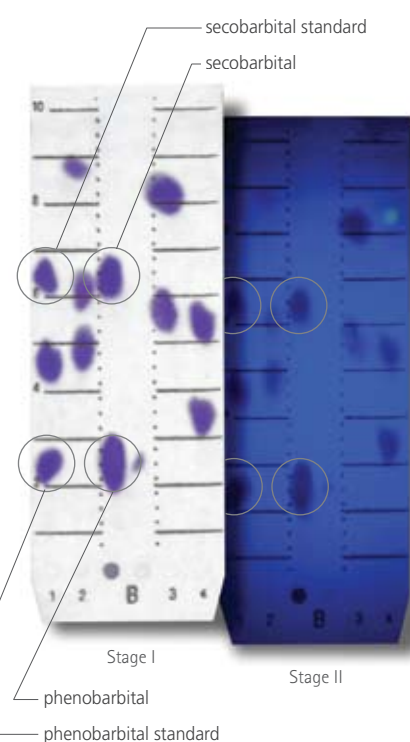


drugs with TOXI•LAB's unique system of color

TOXI•LAB A



TOXI•LAB B

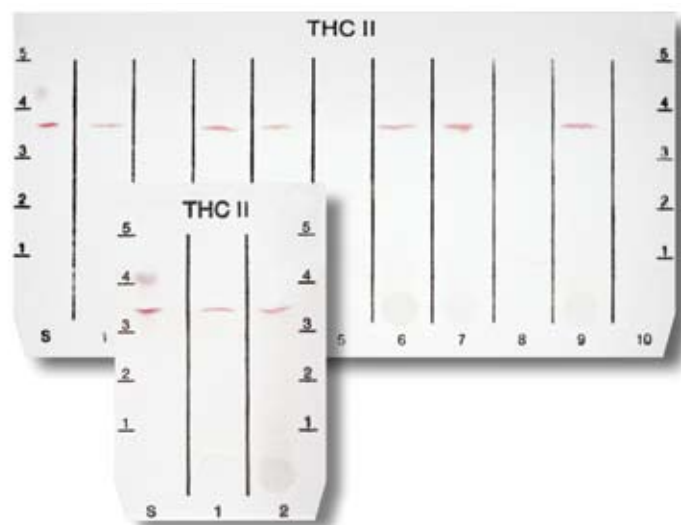


Confirm marijuana metabolite at the same cutoff recommended for GC/MS

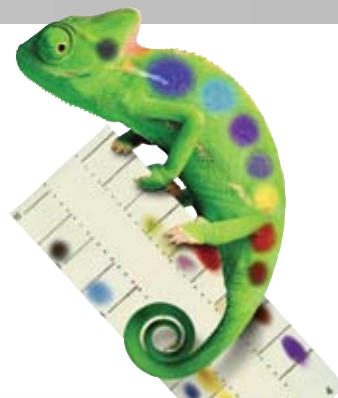
THC II and THC II Plus

Now you can screen or confirm for Δ^9 -THC-COOH in urine and get results in 20 minutes. TOXI•LAB THC II gives you a sensitivity of 15 ng/mL for both screening and confirmation—the same cutoff recommended for GC/MS by US SAMHSA guidelines. Additionally, this off-line analysis provides more GC/MS availability.

- **Quick:** Results in 20 minutes.
- **Specific:** No interfering substances.
- **Cost-effective:** Low startup cost and no capital investment. No expensive instrument maintenance or maintenance contracts.



reactions



Differentiate individual opiates

LTD™ Opiate

When you need to know exactly which analyte produced a positive opiate class drug screen result, turn to the TOXI•LAB LTD Opiate system. With TOXI•LAB LTD, you can distinguish between morphine, normorphine, 6-monoacetylmorphine (6-MAM), hydromorphone, codeine, norcodeine, hydrocodone, dihydrocodeine, and oxycodone.

- **Quick:** Analyzes 10 to 20 specimens in 60 minutes.
- **Specific:** Differentiates individual drugs in the Opiate class.
- **Sensitive:** Limit of detection is 200 ng/mL.

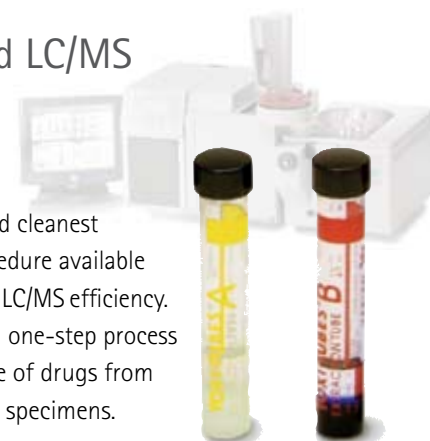


Boost GC/MS and LC/MS efficiency

TOXI•TUBES®

Use the quickest, easiest, and cleanest liquid/liquid extraction procedure available to increase your GC/MS and LC/MS efficiency. TOXI•TUBES give you a clean one-step process for extracting a broad range of drugs from biological or non-biological specimens.

- **Boost** GC/MS and LC/MS efficiency with fast simple drug extractions.
- **Reduce** risk of system downtime and increase throughput by reducing column changes.
- **Quickly**, easily, cleanly extract drugs from samples.



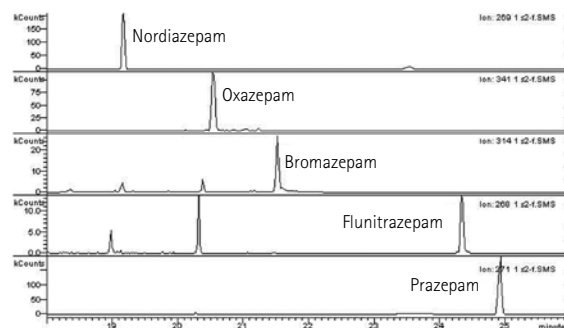
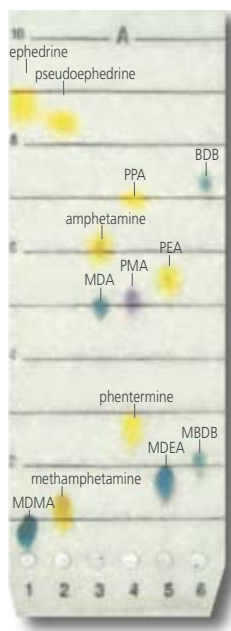
Pinpoint "Rave" party drugs with ease.

Sympathomimetic Amine (SMA)

Differentiation Special Procedures

From ecstasy to methamphetamine, the TOXI•LAB Sympathomimetic Amine (Amphetamines) Special Procedures can help you quickly detect and differentiate SMAs—up to 10 specimens in 45 minutes.

- **Quick:** Analyzes 10 specimens in 45 minutes.
- **Specific:** Differentiates MDMA, MDA, MDEA, amphetamine, methamphetamine, PMA, MBDB and BDB, ephedrine/pseudoephedrine, phentermine, phenylpropanolamine, and phenethylamine.
- **Sensitive:** Limit of detection is 250-500 ng/mL for most SMAs.



Selected profiles of five benzodiazepines extracted from a whole blood sample using TOXI•TUBES A. Each drug was spiked at 50 ng/mL in blood.

Benzodiazepine	Recovery ratio (%)	
	Whole Blood	Urine
Nordiazepam	75.5	88.2
Oxazepam	72.0	85.9
Bromazepam	67.8	91.2
Flunitrazepam	72.7	89.8
Prazepam	74.7	93.2

TOXI·LAB®

YOU CAN SPOT THE DIFFERENCE

Varian, Inc. is committed to a process of continuous improvement, driving us to exceed customer expectations in everything we do.

ISO 13485:2003
CERTIFIED

Varian, Inc.
www.varianinc.com

**TOXI·LAB Customer Service and
Technical Support:**

email: toxilab@varianinc.com
800.854.0277, Option 1 (US only)
949.770.9381, Option 1
fax: 949.770.0863



VARIAN

International customers please contact your local
Varian office or distributor.