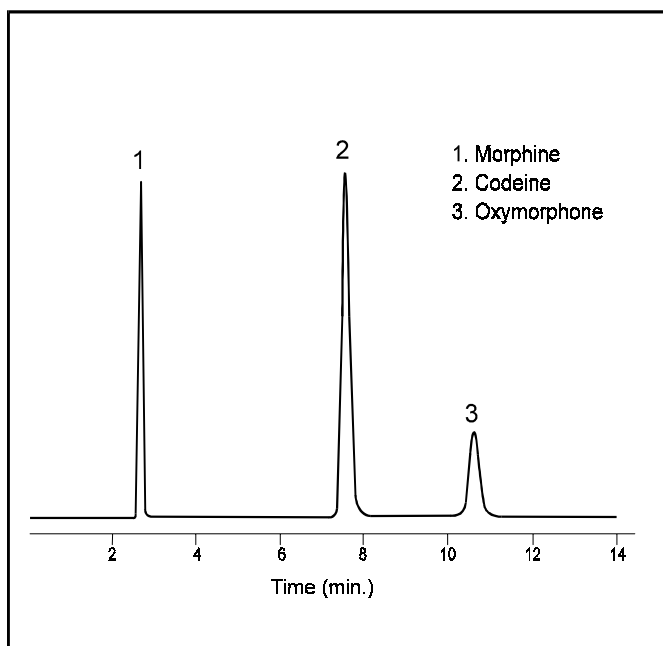


# Opiate Drugs

## Basic Compounds Show Good Peak Shape on Rx-Silica

Application  
Pharmaceutical  
Robert Ricker



**Conditions:**  
ZORBAX Rx/SB-C8 (4.6 x 150 mm) (Agilent P/N: 883967-901)/(883975-906)  
7% ACN, 93% 25mM,  $\text{KH}_2\text{PO}_4$ , pH 3.5  
1.5 mL/min, 25°C, Detect. UV(214 nm)

### Highlights

- *These basic compounds are known to have poor peak shape on many reversed-phase columns.*
- *ZORBAX Rx-SIL has an extremely homogeneous silica surface with uniform associated silanols and low acidity.*
- *ZORBAX Rx and StableBond columns show significantly reduced band tailing and improved column efficiency when analyzing basic compounds.*



**Agilent Technologies**

*Robert Ricker is an application chemist  
based at Agilent Technologies, Wilmington,  
Delaware.*

For more information on our products and  
services, visit our website at:  
[www.agilent.com/chem](http://www.agilent.com/chem)

Copyright© 2002 Agilent Technologies, Inc.  
All Rights Reserved. Reproduction,  
adaptation or translation without prior  
written permission is prohibited, except as  
allowed under the copyright laws.

Agilent shall not be liable for errors  
contained herein or for incidental or  
consequential damages in connection with  
the furnishing, performance, or use of this  
material.

Information, descriptions, and specifications  
in this publication are subject to change  
without notice.

Printed in the USA  
April 25, 2002  
5988-6413EN



**Agilent Technologies**