

Supporting Dionex Chromeleon Data With OpenLAB Enterprise Content Manager

Data Sheet

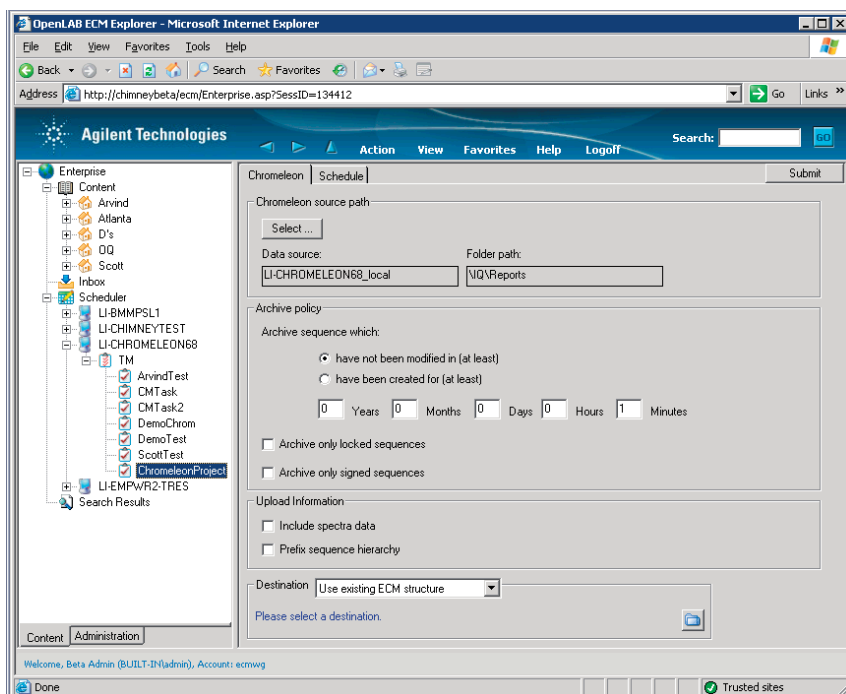


Figure1. Search the Chromeleon database with OpenLAB ECM's scheduled import service for data that matches user defined criteria

Key Benefits

- Reduce the time from data to decision making, by ensuring information is immediately available and easy to find - even after it has been archived.
- Increase the useful life time of data by providing tools for reviewing archives without requiring a restore process.
- Reduce implementation and training costs with a web based application that provides users with a familiar user interface based on industry standards.
- Increase efficiency with tools that are capable of archiving data with no end user interaction.

Chromatography data systems that have a database backend rather than producing flat files, such as Dionex Chromeleon, present an interesting data management dilemma. Database products such as Oracle and SQL Server produce an archive file that is compressed and can be easily stored for long term data archive. However, in that archive format the data can not be viewed, indexed, or searched.

Agilent's OpenLAB Enterprise Content Management (ECM) system has specialized support for Dionex Chromeleon data. Using this Chromeleon specific interface, users can schedule automated data transfer into OpenLAB ECM. OpenLAB ECM allows users to query Chromeleon for data that meets user defined archive criteria including: Locked and/or signed sequences or sequences older than a user defined time period. When stored in OpenLAB ECM, the data can be indexed, searched, and reviewed without a complex restore procedure.



Agilent Technologies

OpenLAB ECM Dionex Chromeleon Support

OpenLAB ECM offers a specialized interface for archiving Dionex Chromeleon data (revision 6.8). With this scheduler agent add-in, a user can define which sequence data should be uploaded, based on any or all of the following criteria:

- Sequence Name
- Source Path
- Time of creation
- Time of last modification
- Age

Spectral data can also be included in the upload if desired.

The user can also specify when the data should be uploaded:

- Immediately upon creation
- After a certain period of time
- Every time it is modified

When the scheduled task executes, the add-in uses the search criteria to find data suitable for archive to ECM. Before generating the Chromeleon database archive file, the information is exported into an XML (or technology neutral) file.

The technology neutral representation of the data is packaged with the archive file and uploaded to OpenLAB ECM.

The Technology Neutral File (TNF) is indexed and searchable metadata is associated with the archive.

Using the Technology Neutral File (TNF) viewer, the archived data can be reviewed, annotated, and even reused without a lengthy restore procedure – keeping the Chromeleon data useful throughout its entire life cycle.

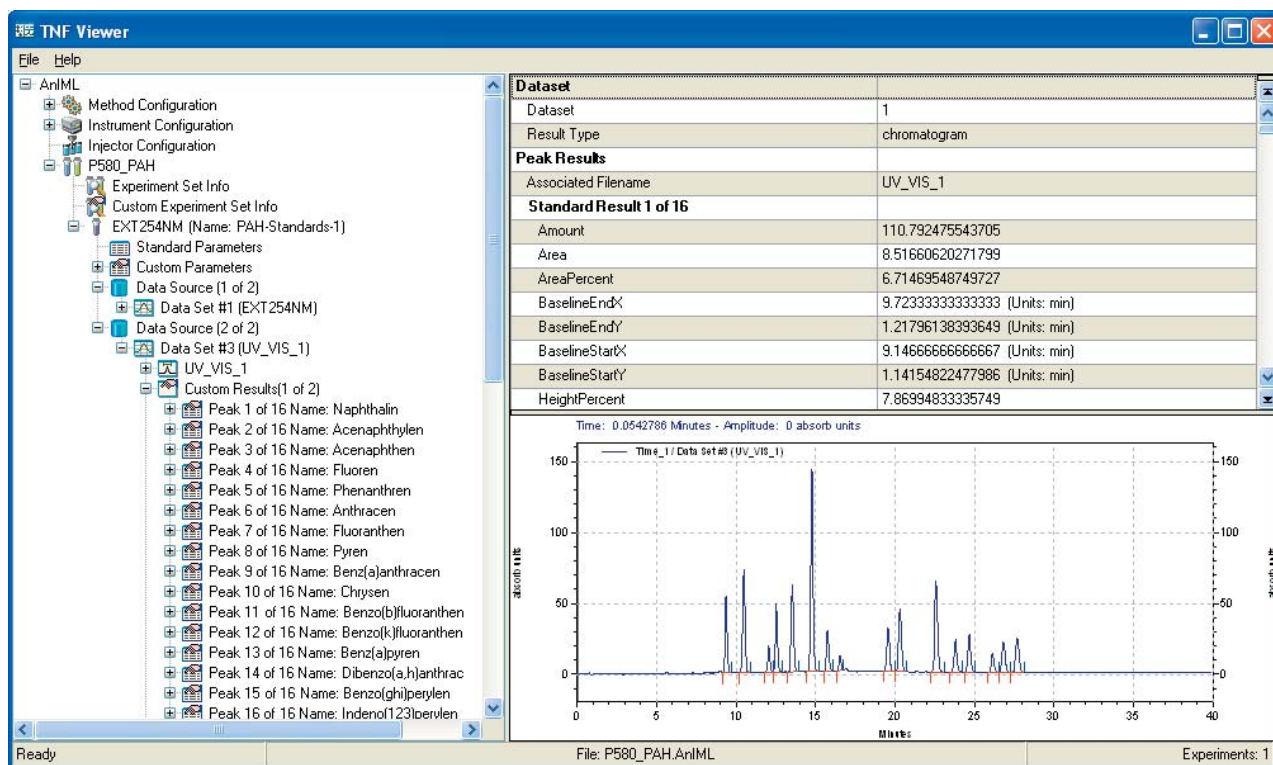


Figure 2. Chromeleon data viewed from OpenLAB ECM.

OpenLAB Enterprise Content Manager (ECM)

OpenLAB ECM is a software solution that helps you make better decisions faster than ever. By providing a secure, central repository and rich content services, ECM allows you to create, manage, collaborate, archive, and re-use all of your business critical information with ease. ECM manages raw data and human readable documents of any data, in any form, from any supplier, and its web-based user interface drastically reduces the learning curve for new users.

OpenLAB ECM has a modular architecture that allows you to tailor the system topography to your corporate environment. As your business needs grow, OpenLAB ECM can grow with you; start small and add additional servers when necessary.

Because it was born in the life sciences laboratory environment, OpenLAB ECM has the unique ability to manage data generated from analytical instruments and measurement devices (e.g. chromatography systems, mass spectrometry, NMR, imaging systems) as well as any document type. OpenLAB ECM also has a complete set of features designed to aid in regulatory compliance.

OpenLAB ECM is a proven solution that has helped organizations across a number of industries get control of their business critical information while improving regulatory compliance, reducing operational costs, boosting productivity levels, and increasing customer satisfaction.

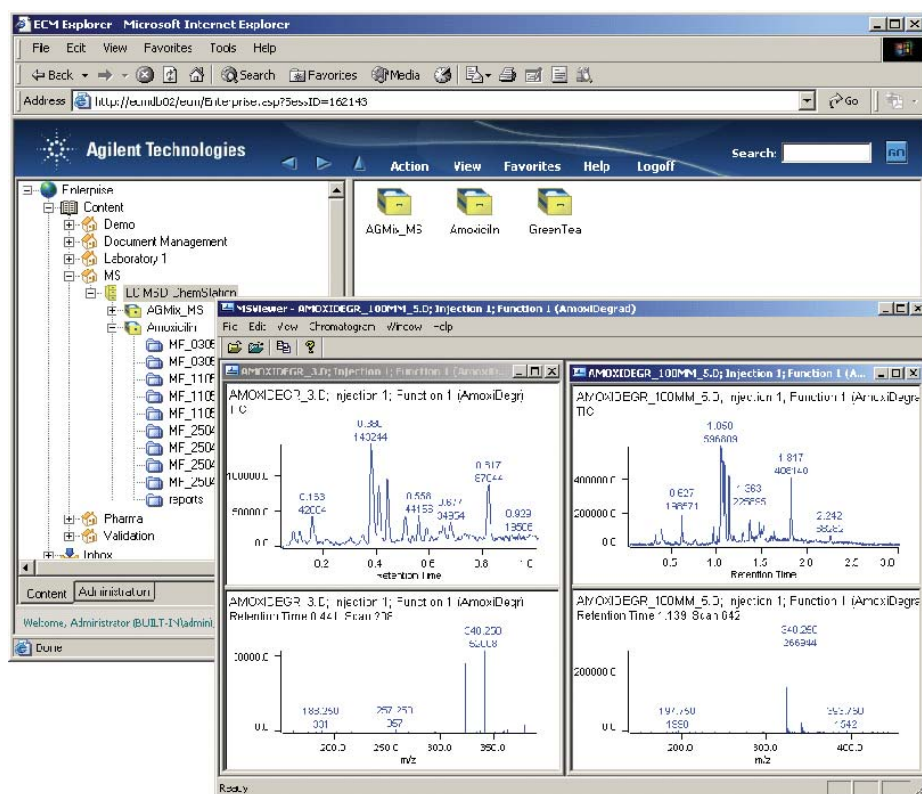


Figure 3.
Agilent's OpenLAB Enterprise
Content Manager (ECM)

Visit www.agilent.com/chem/software
or call toll free 1-800-227-9770
(U.S. and Canada).

In other countries, please call your local
Agilent Technologies analytical sales office or
Authorized Agilent Technologies Distributor.

This information is subject to change without notice.
© Agilent Technologies, Inc. 2006-2009
Printed in U.S.A. March 5, 2009
5990-3655EN