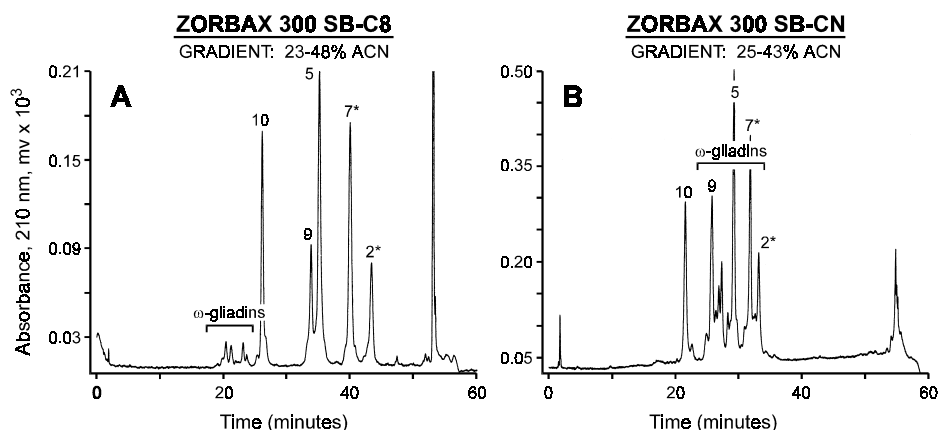


# Stationary-Phase Selectivity Comparison: High-Molecular-Weight, Alkylated, Wheat Glutenin, Protein Subunits

Application  
Food Analysis  
Robert Ricker



**Conditions:**  
ZORBAX 300SB-C8, 300SB-CN (4.6 x 150 mm) Agilent P/N: (883995-906) (883995-905)  
Gradient: 60 min., Mobile Phase (as above) with 0.1% TFA, 1.0 mL/min., 50°C

## Highlights

- Improved separations are achieved by taking advantage of different bonded-phase chemistries.
- Sterically protected SB bonded phases are hydrolytically stable, especially at low pH, and can be relied upon for stable, reproducible separations.



Agilent Technologies

*Robert Ricker is an application chemist  
based at Agilent Technologies, Wilmington,  
Delaware.*

For more information on our products and  
services, visit our website at:  
[www.agilent.com/chem](http://www.agilent.com/chem)

Copyright© 2002 Agilent Technologies, Inc.  
All Rights Reserved. Reproduction,  
adaptation or translation without prior  
written permission is prohibited, except as  
allowed under the copyright laws.

Agilent shall not be liable for errors  
contained herein or for incidental or  
consequential damages in connection with  
the furnishing, performance, or use of this  
material.

Information, descriptions, and specifications  
in this publication are subject to change  
without notice.

Printed in the USA  
April 25, 2002  
5988-6358EN



**Agilent Technologies**