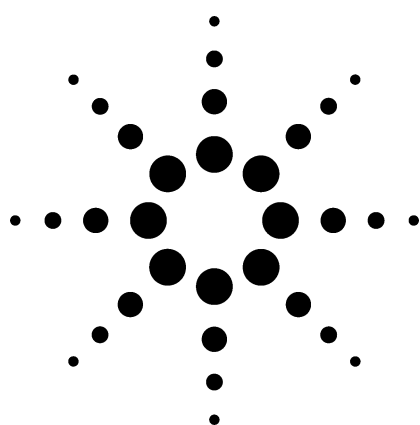


TOGA Analyzer SP1 2310-0047

Technical Overview



Application Highlights

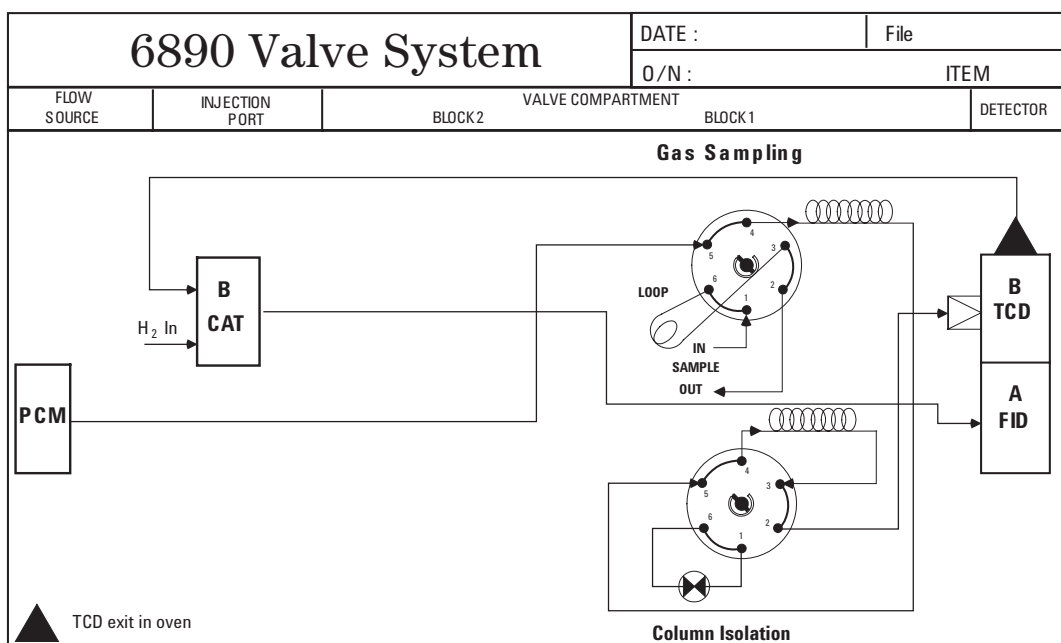
- A Thermal Conductivity Detector (TCD) and a Flame Ionization Detector (FID) working with a methanizer to identify hydrogen, oxygen, nitrogen, carbon monoxide, carbon dioxide, ethane, ethylene, acetylene, 1-Butene, and propane/propylene.
- Analysis time is approximately 20 minutes.

Configurations

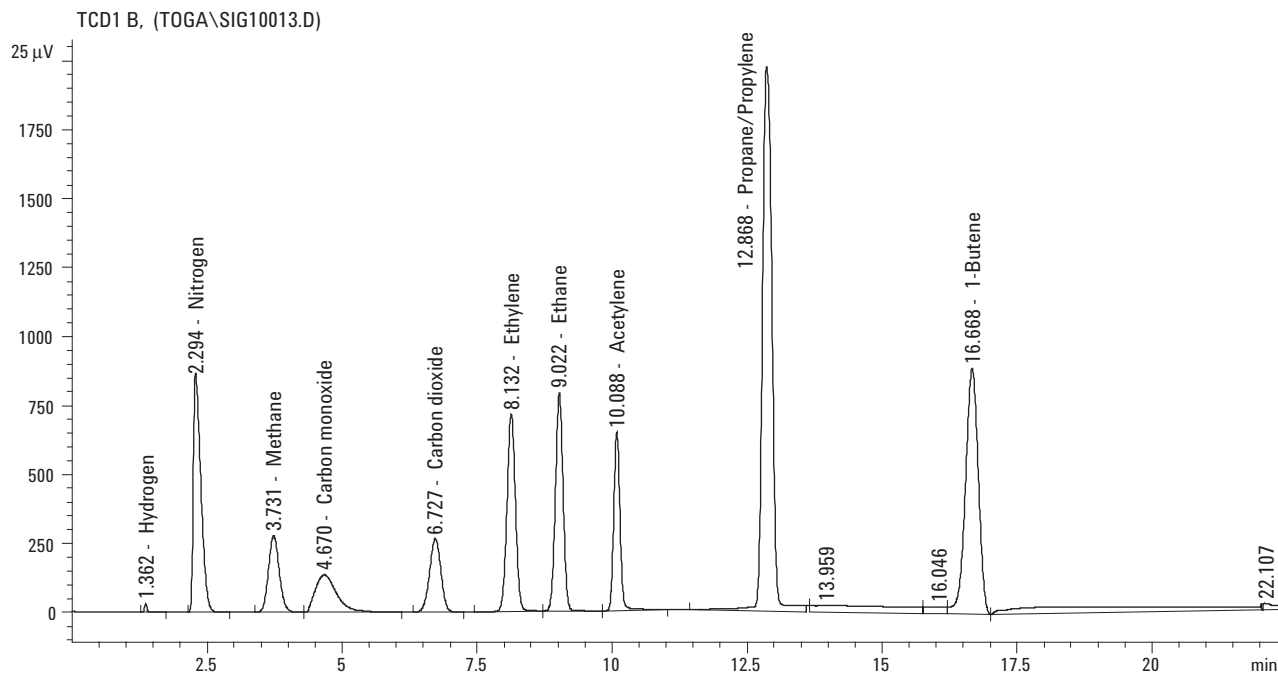
- GC must have options packed inlet (102) or pneumatics control module (PCM) (309), FID (210), TCD (220), methanizer (307), 1-mL sample loop (504), valve box (752), 6-port valve (701) and 6-port valve (702).
- Special includes columns, checkout sample for valve timing, factory checkout with chromatograms, method supplied on disk for ChemStation and user manual.

For More Information

For more information on our products and services, visit our Web site at www.agilent.com/chem.



Agilent Technologies



Agilent shall not be liable for errors contained herein or for incidental or consequential damages in connection with the furnishing, performance, or use of this material.

Information, descriptions, and specifications in this publication are subject to change without notice.

© Agilent Technologies, Inc. 2003

Printed in the USA
May 9, 2003
5988-9300EN



Agilent Technologies