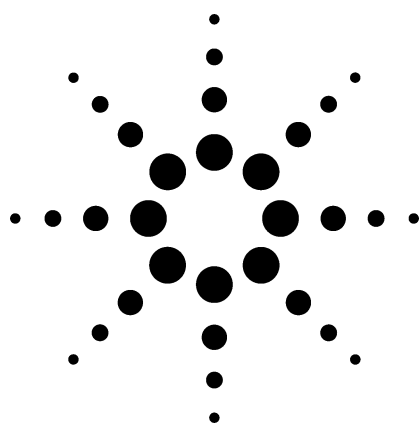


Prefractionator 2310-0040

Technical Overview



Application Highlights

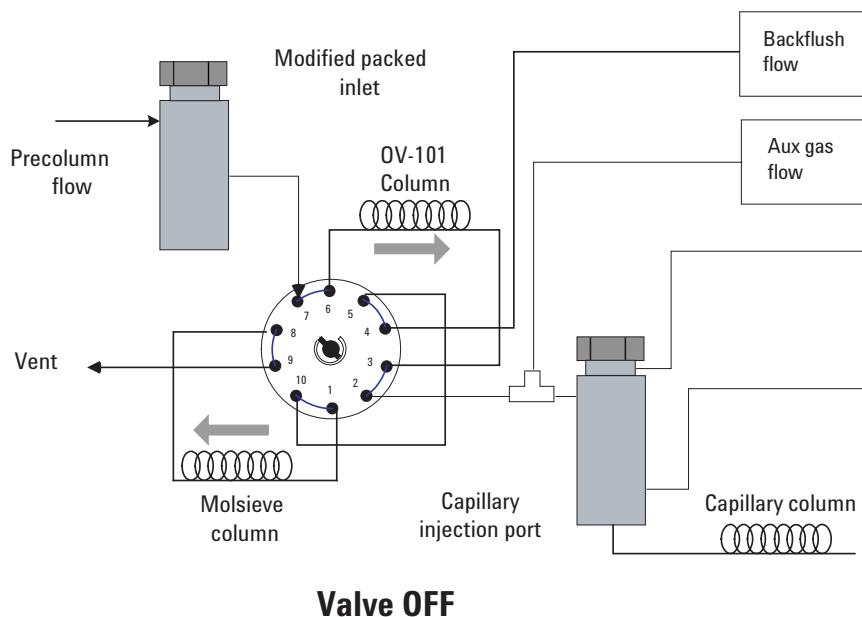
- A precolumn to allow lower boiling compounds to elute into a capillary inlet and then onto a capillary column. The higher boiling compounds are then backflushed to vent. This system is unique in that it allows the split ratio to be set without changing the cut time of the valve. A plug-in program is supplied to allow this to be set up.
- Analysis time is approximately 30 minutes.

Configurations

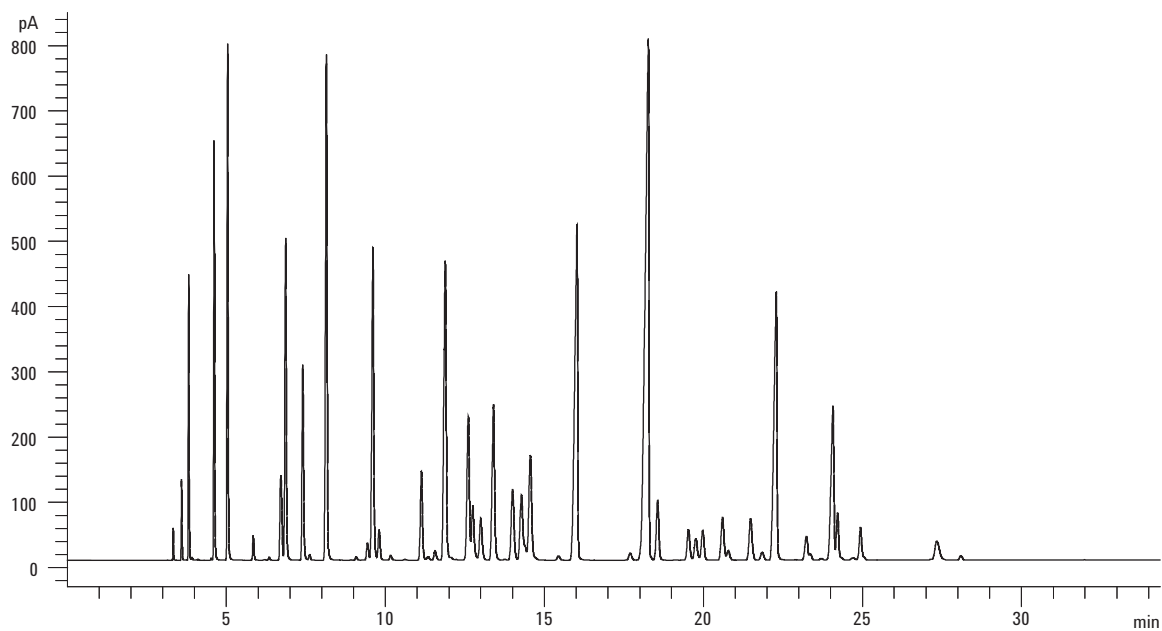
- GC must have options Capillary inlet (112), Aux EPC (301), pneumatics control module (PCM) (309), FID (211 or 210), valve box (751), 10-port valve (800), plumb valve upstream (860).
- Special includes columns, modified packed inlet, check-out sample for valve timing, factory checkout with chromatograms, method supplied on disk for ChemStation and user manual.

For More Information

For more information on our products and services, visit our Web site at www.agilent.com/chem.



Agilent Technologies



Chromatogram shows naphtha cut up to C9.

Agilent shall not be liable for errors contained herein or for incidental or consequential damages in connection with the furnishing, performance, or use of this material.

Information, descriptions, and specifications in this publication are subject to change without notice.

© Agilent Technologies, Inc. 2003

Printed in the USA
May 7, 2003
5988-9298EN



Agilent Technologies