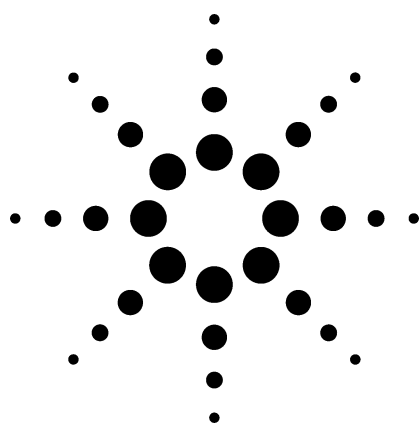


Natural Gas Analyzer SP1 2310-0012

Technical Overview



Application Highlights

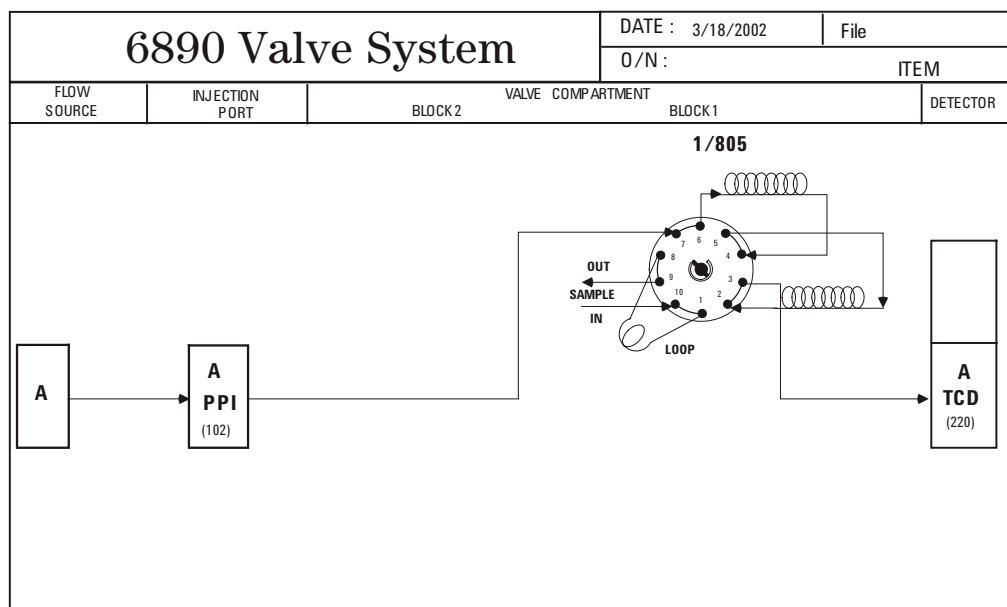
- A Thermal Conductivity Detector (TCD) to identify isobutane, n-butane, isopentane, n-pentane, carbon dioxide, ethane, propane, oxygen/argon/nitrogen composite, and methane with an initial C6+ composite backflush to detector. The lower detection limit on the TCD is 100 ppm for all components. This configuration is suggested when the customer does NOT want separation of nitrogen and oxygen.
- Analysis time is approximately 15 minutes.
- System compliant with Gas Processors Association Method 2261.

Configurations

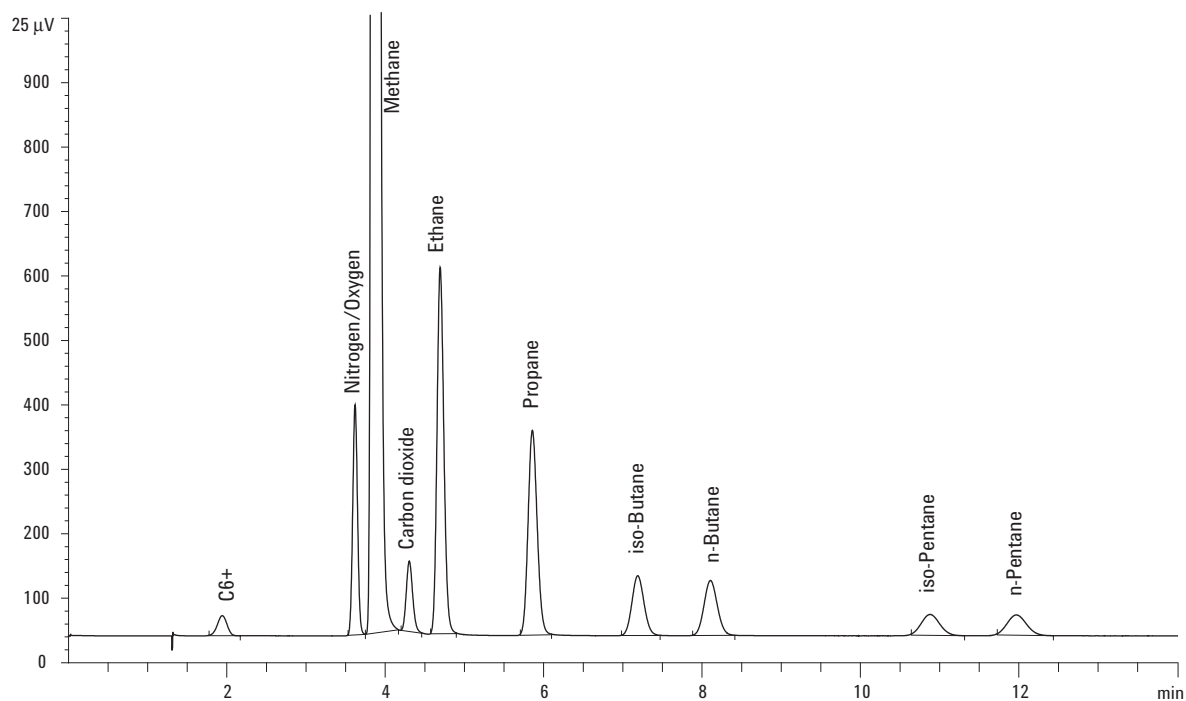
- GC must have options packed inlet (102) or pneumatics control module (PCM) (309), TCD (220), 0.5-mL sample loop (503), automation (751), and 10-port valve (805).
- Special includes columns, checkout sample for valve timing, factory checkout with chromatograms, method supplied on disk for ChemStation and user manual.

For More Information

For more information on our products and services, visit our Web site at www.agilent.com/chem.



Agilent Technologies



Agilent shall not be liable for errors contained herein or for incidental or consequential damages in connection with the furnishing, performance, or use of this material.

Information, descriptions, and specifications in this publication are subject to change without notice.

© Agilent Technologies, Inc. 2003

Printed in the USA
May 9, 2003
5988-9297EN



Agilent Technologies