

Extended Refinery Gas Analyzer SP1 2310-0107

Technical Overview

Application Highlights

- A Thermal Conductivity Detector (TCD) to identify hydrogen, carbon dioxide, nitrogen, methane and carbon monoxide. A unique carrier gas switching allows the TCD to be used with nitrogen/argon for hydrogen analysis and helium for the other gases. A flame detector is used for the hydrocarbons.
- Analysis time is approximately 15 minutes, depending on hydrocarbon range.

Configurations

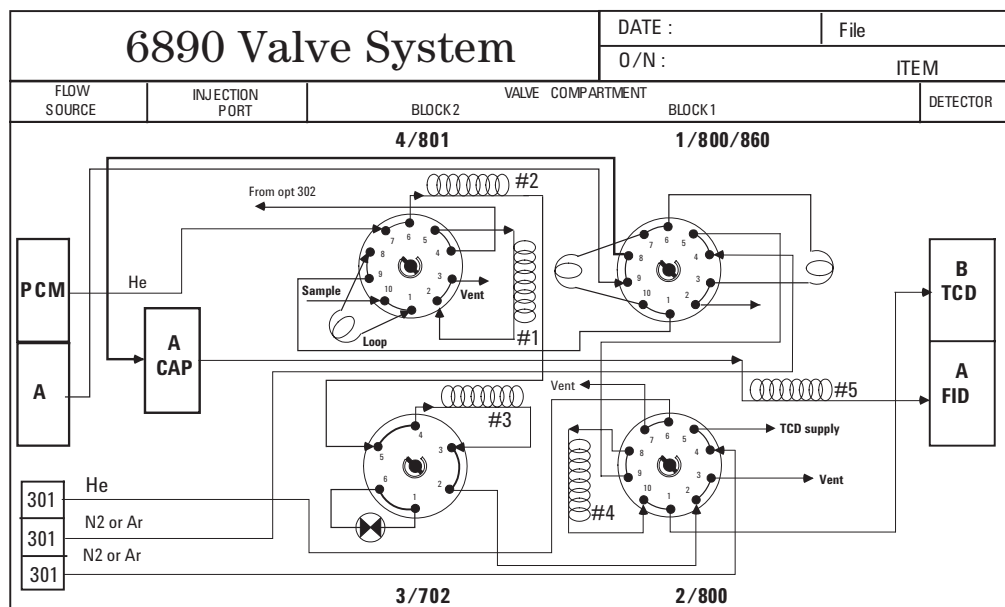
- GC must have options capillary inlet (112), pneumatics control module (PCM) (309), TCD (220), flame ionization

detector (FID) (210) automation (754), 10-port valve (801), two 10-port valves (800), 6-port valve (702), 3-channel electronic pneumatics control (EPC) (301), manual flow control (302), plumb valve upstream of capillary inlet (860).

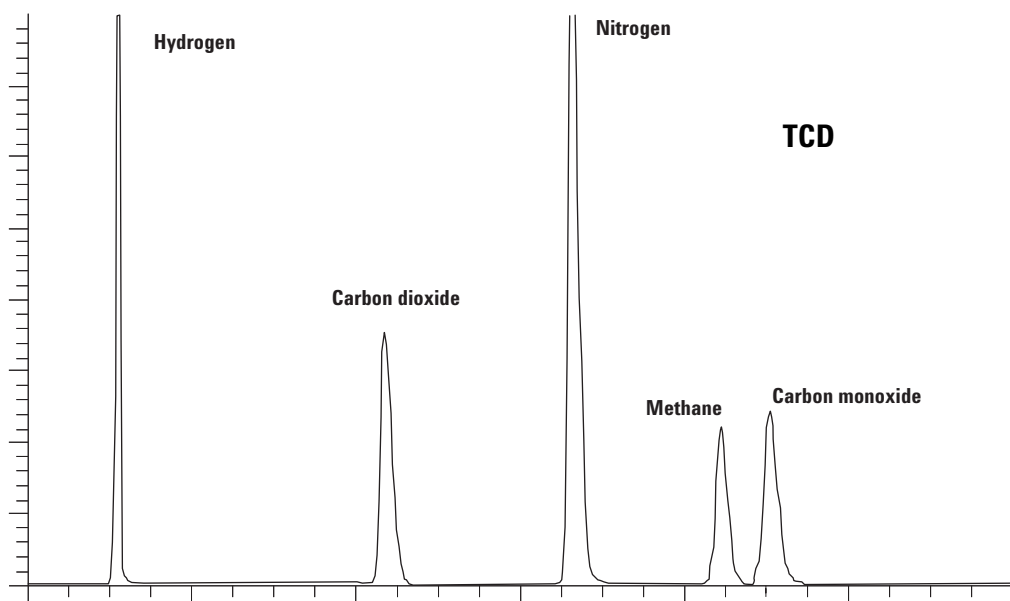
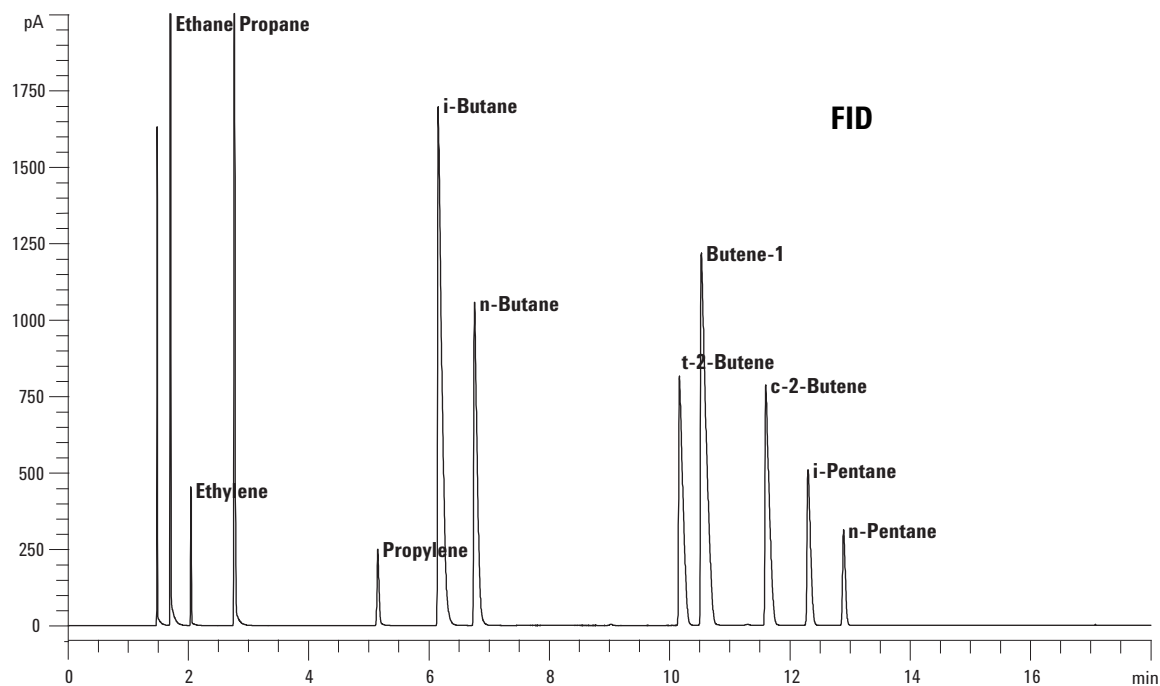
- Special includes packed columns and spare set, PLOT column, checkout sample for valve timing, factory checkout with chromatograms, method supplied on disk for ChemStation and user manual.

For More Information

For more information on our products and services, visit our Web site at www.agilent.com/chem.



Agilent Technologies



Agilent shall not be liable for errors contained herein or for incidental or consequential damages in connection with the furnishing, performance, or use of this material.

Information, descriptions, and specifications in this publication are subject to change without notice.

© Agilent Technologies, Inc. 2003

Printed in the USA
May 9, 2003
5988-9304EN



Agilent Technologies