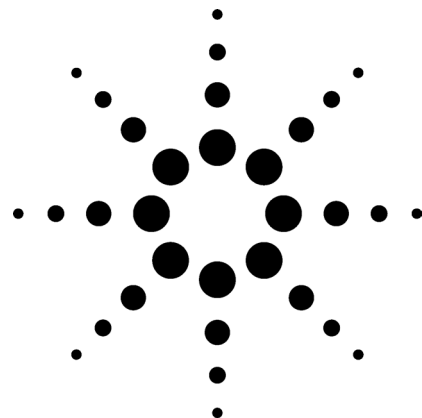


# Dual Channel Natural Gas Analyzer SP1 2310-0100

## Technical Overview



### Application Highlights

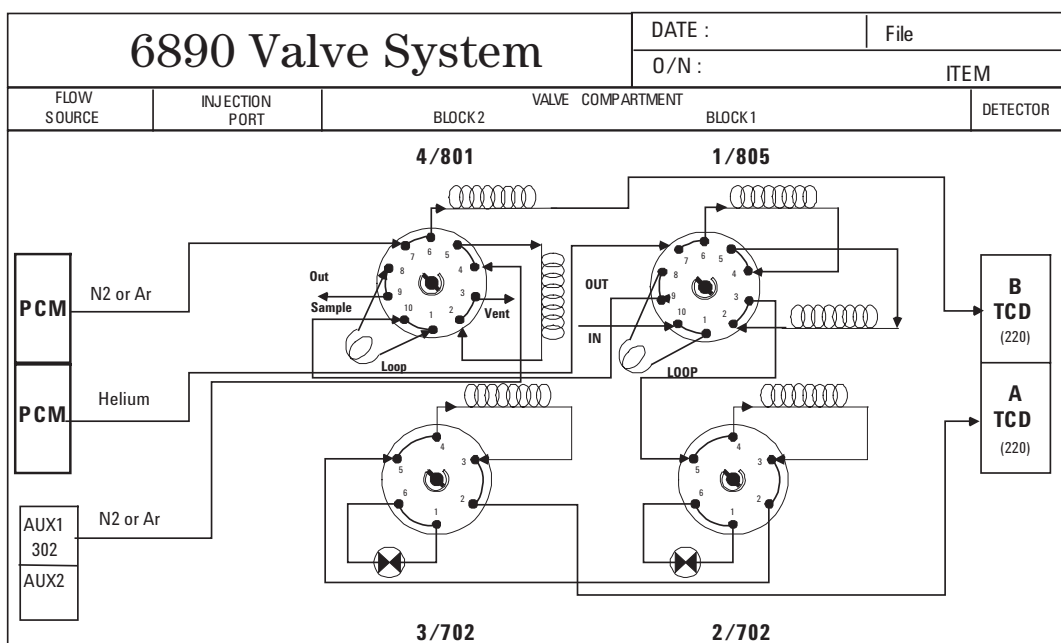
- Two Thermal Conductivity Detectors (TCD) to identify isobutane, n-butane, isopentane, n-pentane, carbon dioxide, ethane, propane, oxygen/argon composite, nitrogen and methane with an initial C6+ composite backflush to detector. The lower detection limit on the TCD is 100 ppm for all components. The second channel uses nitrogen or argon carrier gas to enable the detection of helium or hydrogen.
- Analysis time is approximately 20 minutes.

### Configurations

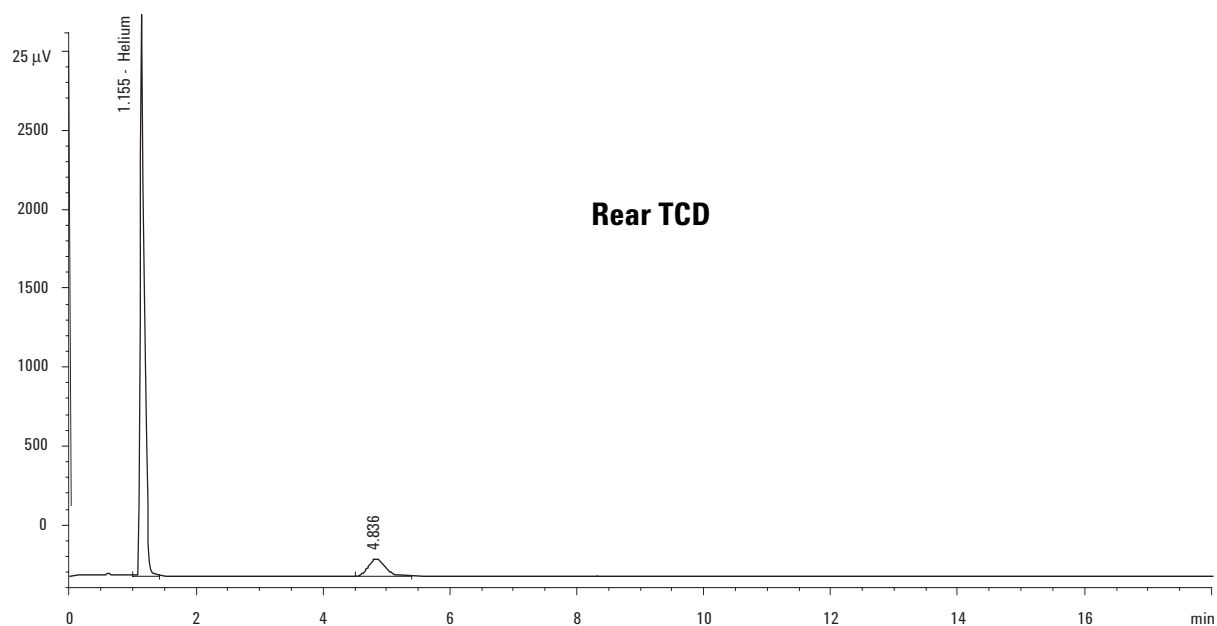
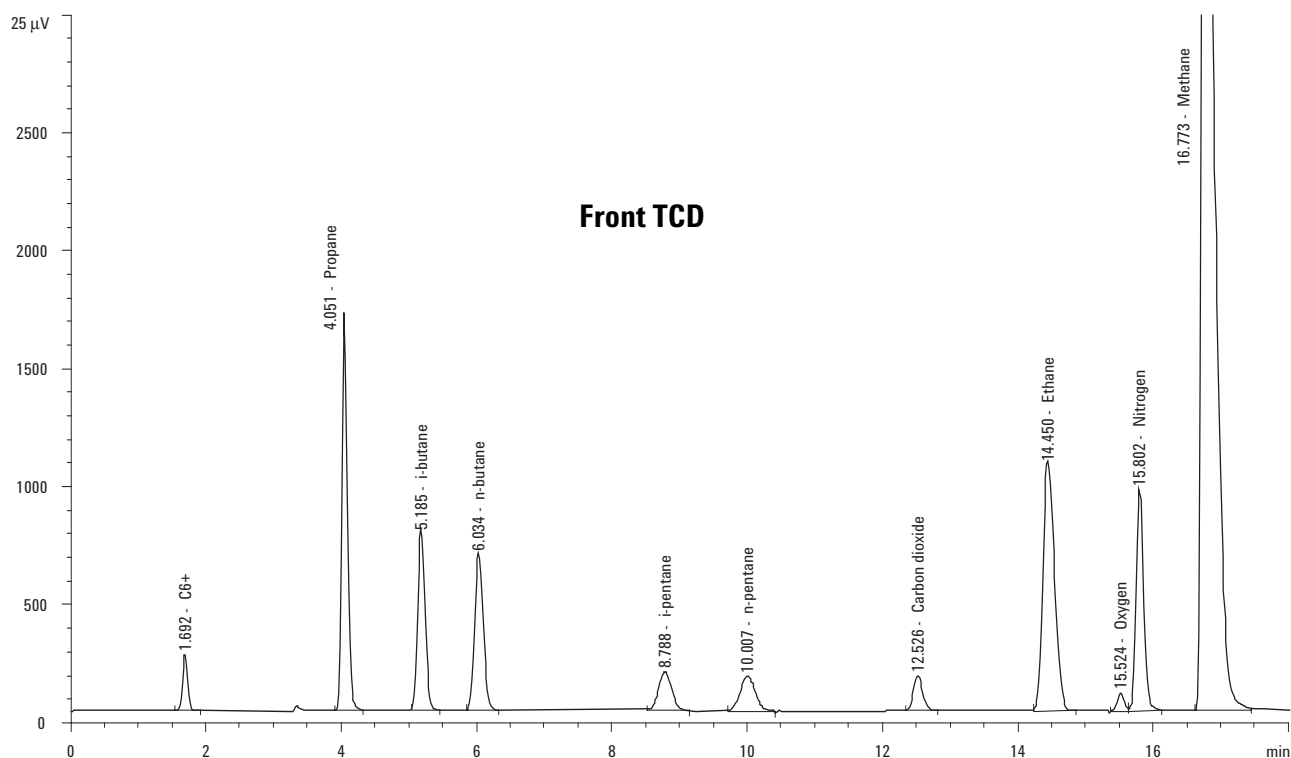
- GC must have options packed inlet (2 x 102) or pneumatics control module (PCM) (2 x 309), TCD (2 x 220), 0.5-mL sample loop (2 x 503), valve box (754), 10-port valve (805), 10-port valve (801), and two 6-port valves (702), aux flow control (302 or 301).
- Special includes columns, checkout sample for valve timing, factory checkout with chromatograms, method supplied on disk for ChemStation and user manual.

### For More Information

For more information on our products and services, visit our Web site at [www.agilent.com/chem](http://www.agilent.com/chem).



**Agilent Technologies**



Agilent shall not be liable for errors contained herein or for incidental or consequential damages in connection with the furnishing, performance, or use of this material.

Information, descriptions, and specifications in this publication are subject to change without notice.

© Agilent Technologies, Inc. 2003

Printed in the USA  
May 9, 2003  
5988-9303EN



**Agilent Technologies**