



## Agilent's Newly Expanded ZORBAX Eclipse Plus LC Column Portfolio

No other LC columns have ever produced such **superior peaks** for bases, acids, and neutrals.

- Enhance your productivity with new options for fast and ultra-fast LC.
- Optimize separations of all analytes with new selectivity choices.
- Turn potential measurement obstacles into opportunities for success.

Our measure is your success.





*"I can't remember the last time I achieved ideal peak shape for basic compounds."*



*"Our lab is wasting too much time re-evaluating column chemistries and protocols."*



*"We need to enhance our analytical capabilities to conform to tight government regulations on PAHs."*

Only one column family can help you successfully overcome these – and other – measurement obstacles: Agilent ZORBAX Eclipse Plus.

Eclipse Plus LC columns feature a breakthrough technology that delivers superior peaks for complex bases like amitriptyline, diphenhydramine, and zonisamide – as well as acids and neutrals like antibiotics, benzoate, and cocaine.

And now, we've expanded our ZORBAX Eclipse Plus column portfolio to include a Phenyl Hexyl bonded phase – plus C18 bonded phase designed for polynuclear aromatic hydrocarbon (PAH) separations – as well as separations of environmental analytes.

So whether you're performing a drug degradation study or measuring trace levels of pesticides, you can be confident of the quality and repeatability of your results.

# ZORBAX

## NEW ZORBAX Eclipse Plus LC columns

designed to give you superior, reproducible separations of basic compounds.

Eclipse Plus columns are a new innovation that ensures excellent peak shape, resolution, and results for bases, acids, and neutrals.

But what's really exciting is how Eclipse Plus columns stand up to – even outperform – the competition to help you...

- **Achieve excellent peak shape and resolution** – without the confusion of co-elution or hidden peaks.
- **Significantly reduce tailing** – so you can confidently resolve difficult analytes.
- **Perform ultra-fast, high-resolution,** and analytical LC and achieve the right results under a range of temperatures, pressures, and pH levels.

**Two NEW bonded phase gives you more selectivity options.**

Recently, we expanded our ZORBAX Eclipse Plus line to include two new bonded phases: a phenyl hexyl bonded phase – plus a C18 bonded phase for PAH separations. These polymerically bonded C18 columns can also be used for separating phenols and other environmental analytes – as well as separations that depend on shape selectivity (such as carotene isomers). So now, you have even more selectivity choices to completely optimize even more separations.

**Simple, reliable method development and transfer.**

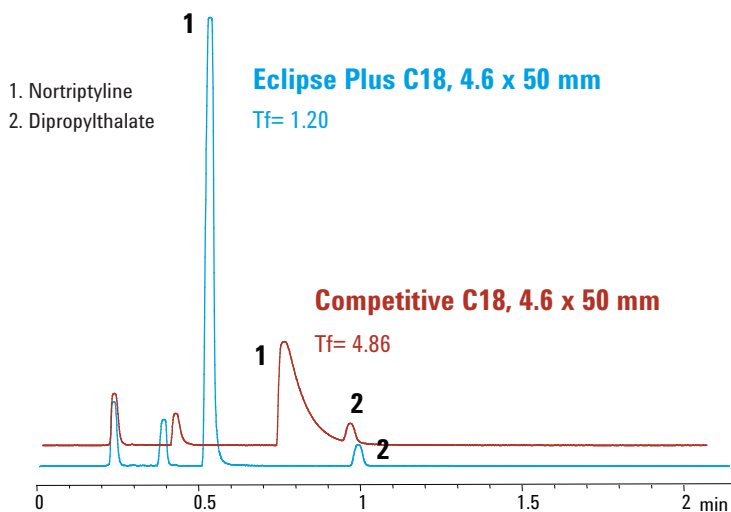
Whether you specialize in pharmaceuticals, chemical analysis, foods, flavors, or environmental testing, Eclipse Plus columns can help you develop reliable HPLC methods under demanding deadlines. What's more, you can run, transfer, or replace existing HPLC methods from site to site without worrying about change or variability in your results. So the methods you create today won't have to be re-validated tomorrow.

# ECLIPSE



### Eliminate Tailing and Maximize Resolution with Eclipse Plus Columns

Mobile Phase: 65% ACN: 35% 25 mM phosphate buffer (pH 7.4)



Superior peak shape and better selectivity with Eclipse Plus means more resolution, easier quantitation and better results in your separations.

Other columns *promise* superior peak shape and efficiency for bases.

## ZORBAX Eclipse Plus delivers.

*Faster turnaround times. Unrelenting workloads. Fewer staff members.* These are the challenges that every lab must face. And Eclipse Plus columns can help you meet these challenges by...

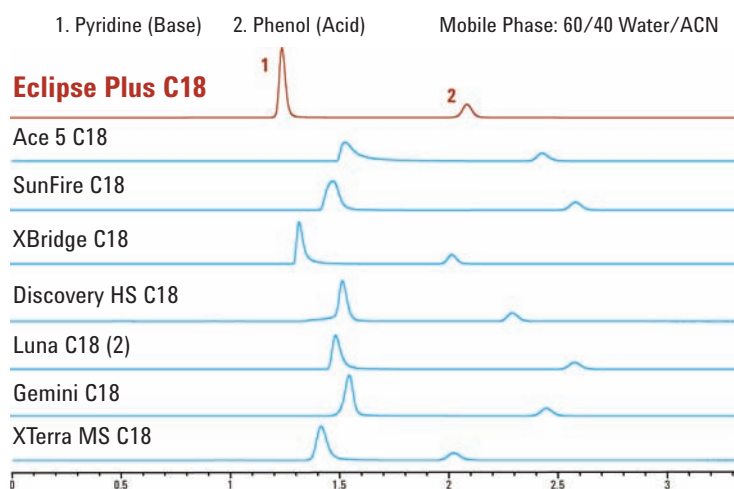
- Enhancing efficiency and resolution with basic compounds, so you can better resolve and quantitate closely eluting peaks.
- Improving peak symmetry for your most challenging basic compounds – as well as acids and neutrals.
- *Quantitating and validating* your results with a higher degree of confidence than ever before.
- Providing a wide range of selectivity choices for the best possible resolution – including our NEW ZORBAX Eclipse Plus C18, C8, Phenyl Hexyl, and Eclipse PAH columns.
- Offering you more options for fast and ultra-fast separations with our new 1.8  $\mu\text{m}$  Rapid Resolution HT columns.

Like all Eclipse columns, ZORBAX Eclipse Plus columns achieve their superior performance through extra-dense bonding, combined with a double-endcapping process. But Eclipse Plus columns also feature enhanced high-performance silica, new endcapping reagents, and a unique bonding process that is optimized for the improved silica.

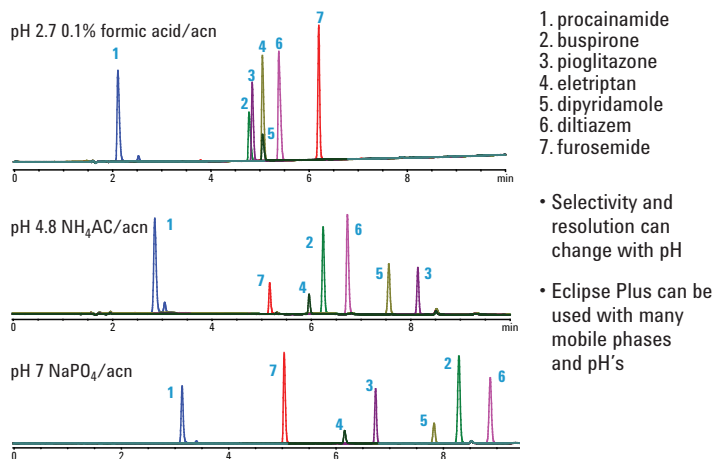
What's more, Agilent's ZORBAX silica is **manufactured by Agilent** – not purchased from outside suppliers. And that means *we control* every step of the manufacturing process, ensuring lot-to-lot consistency and long-term, reliable results.



### ZORBAX Eclipse Plus: Best Peak Shape in the Industry Without Tailing.



### You Can Use ZORBAX Eclipse Plus Columns Over a Wide pH Range (pH 2-9) for Optimal Selectivity and Peak Shape.



• Selectivity and resolution can change with pH

• Eclipse Plus can be used with many mobile phases and pH's

**Conditions:** Column: Eclipse Plus C18 4.6 x 100 mm, 5  $\mu\text{m}$   
Gradient: 10 – 90% in 10 minutes    Detection: UV 254 nm

## Day to day... column to column... ZORBAX Eclipse Plus is the name you can trust for consistent chromatography.

Column performance and stability are key to producing results that stand up to scrutiny. And ZORBAX Eclipse Plus columns surpass the competition by...

- Combining excellent peak shape with the efficiency of a silica-based column.
- Performing well under difficult conditions, such as Acetonitrile mobile phases.
- Continuing the ZORBAX tradition of long life and reproducibility.

What's more, Eclipse Plus columns allow you to scale from 1.8  $\mu\text{m}$  to 7  $\mu\text{m}$  – and to transfer methods without worrying about reproducibility. So you can spend more time running samples – and less time re-evaluating new column chemistries or re-validating protocols.

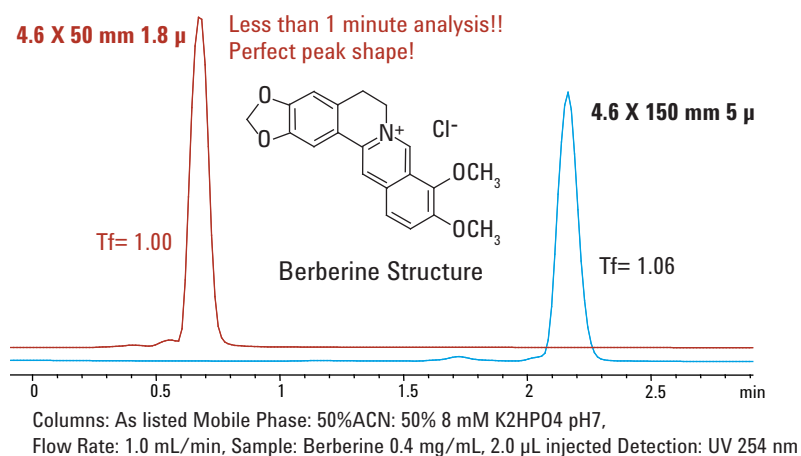
*Need to run twice as many samples in half the time?*

Choose ZORBAX Eclipse Plus Rapid Resolution High-Throughput columns with a 1.8  $\mu\text{m}$  particle size.

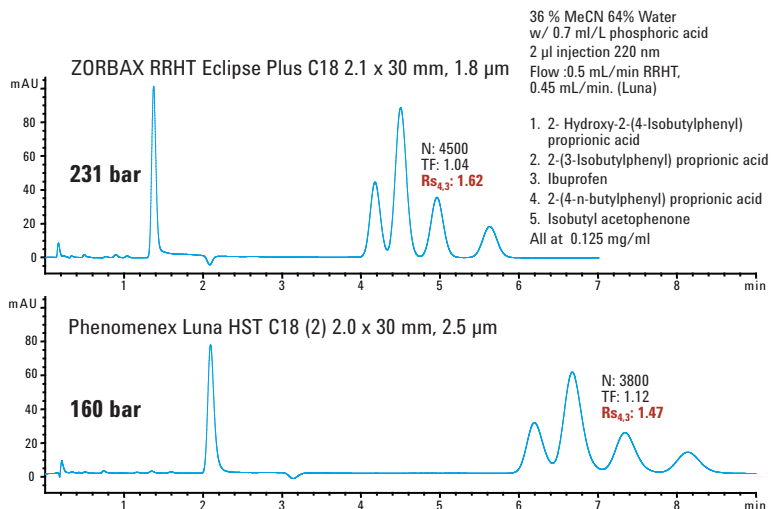
They're specifically engineered for ultra-fast separations and superior method development flexibility. So you can enhance your lab's productivity without compromising reliability.

# ECLIPSE

*With ZORBAX RRHT Eclipse Plus 1.8  $\mu\text{m}$  Columns, You can Perform Fast and Ultra-Fast Analysis of Difficult Basic Compounds Like Berberine.*



*Even 2.5  $\mu\text{m}$  Columns Cannot Achieve the High Resolution of ZORBAX RRHT Columns.*



ZORBAX RRHT has at least 18% more efficiency than Luna HST C18(2)

That means greater than baseline resolution when needed.

Note: Eclipse Plus C18 is outperforming Luna HST C18(2) with less tailing even on an acid!



## ZORBAX Rapid Resolution High-Throughput (RRHT) columns:

Now with over 120 configurations, so you never have to choose between speed, resolution, and sensitivity.

From complex protein digests to ultra-fast separations... Agilent's RRHT LC columns deliver the right results on time. In your lab... or any lab throughout the world.

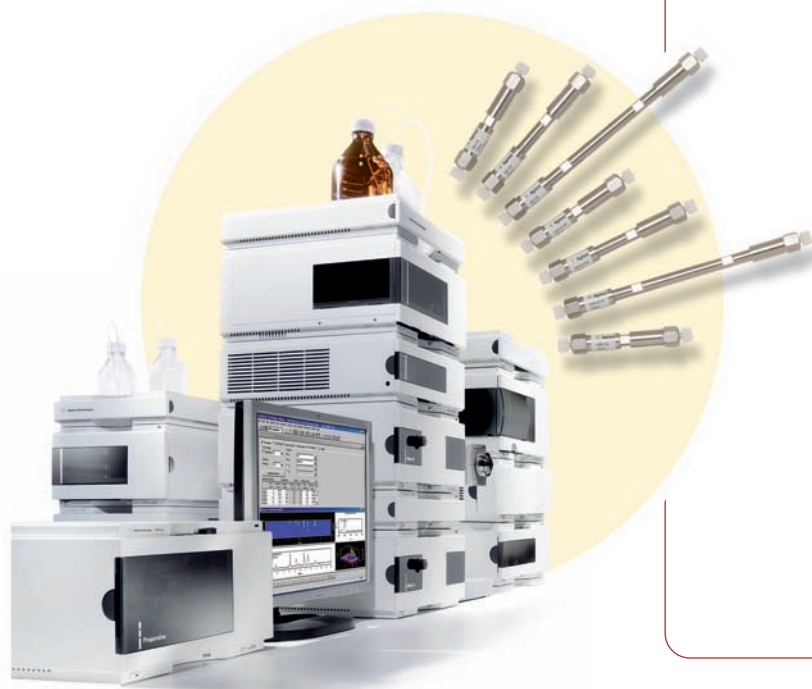
ZORBAX RRHT LC columns are specifically designed for high-speed and high-throughput applications, allowing you to...

- Process samples **up to 20 times faster** than conventional HPLC, while achieving equal or greater sensitivity and reproducibility.
- Reduce your analysis time by up to 95% without compromising resolution.
- Easily scale and reliably transfer conventional LC methods – without re-validation.
- Analyze complex separations on shorter columns.
- Identify highly sensitive compounds through LC/MS – with less co-elution.

Recently, we expanded our portfolio to give you over 120 column choices – including:

- Lengths from 15 mm-150 mm
- IDs from 2.1 mm-4.6 mm
- 12 ZORBAX bonded phases, plus bare silica. Bonded phases include:
  - **NEW ZORBAX Eclipse Plus C18, C8, Phenyl Hexyl, and PAH**
  - Eclipse XDB-C18 and C8
  - StableBond C18, C8, CN, Phenyl, AQ, SB-Phenyl and SB-AQ
  - Extend-C18

And... every bonded phase in our ZORBAX Eclipse Plus family is now available in RRHT 1.8  $\mu$ m particle size.



### Run samples up to 20x faster than conventional LC with Agilent's 1200 Series Rapid Resolution LC System.

Features include...

- 60% more resolving power than traditional LC
- A peak capacity greater than 600
- 30-second cycle time
- Efficiencies above 60,000 plates
- The ability to run your current methods
- Comprehensive support – on the Web, by phone or in person – to ensure top performance

Together with Agilent's **ZORBAX RRHT 1.8  $\mu$ m LC columns**, the Agilent 1200 Series Rapid Resolution LC System can help you produce your numbers more efficiently than ever.

**All the performance. All the time.**

Flexibility and scalability  
— plus selectivity choices  
to accommodate  
virtually any application.

Our newest bonded phase  
meets the toughest demands  
for selectivity and  
reproducibility.

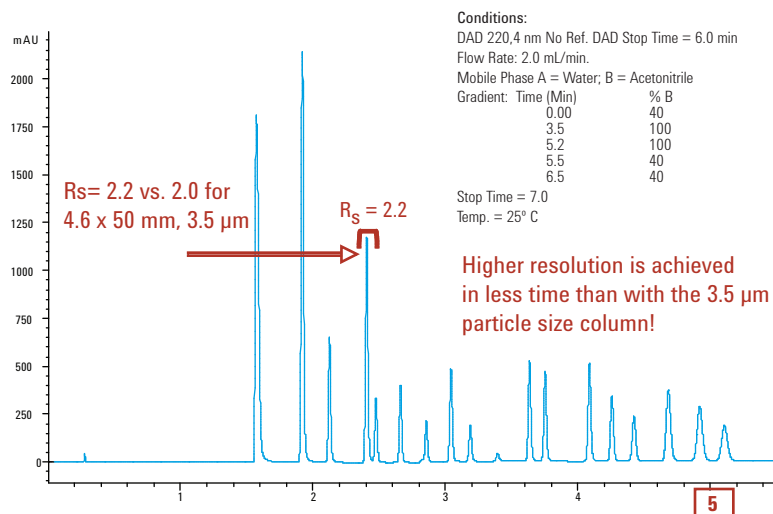
**Polynuclear aromatic hydrocarbon (PAH) columns** are the first PAH columns available in the 1.8  $\mu\text{m}$  particle size to meet the stringent requirements of the food safety and environmental industries while improving productivity.

They can also be used for separating environmental analytes (such as phenols), as well as carotene isomers and other analytes that depend on shape selectivity.

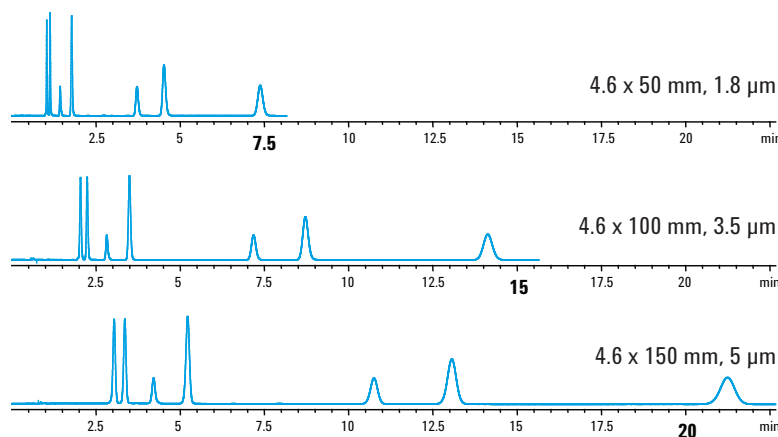
**Phenyl Hexyl columns** deliver unique selectivity for compounds with aromatic groups. Ideal for separating moderately polar compounds, where typical alkyl phases (such as C18 and C8) do not provide adequate resolution.

# ECLIPSE

## High Resolution and Fast Analysis on Rapid Resolution HT 4.6 x 50 mm, 1.8 $\mu\text{m}$ Eclipse PAH Column



## Eclipse Plus Phenyl-Hexyl in a Variety of Particle Sizes for High Resolution, Fast Analysis and Guaranteed Scalability



Selectivity is consistent across particle sizes  
therefore separations are easily scalable.  
Resolution is improved as particle size  
decreases for high quality separations.

Columns: Eclipse Plus Phenyl-Hexyl as noted above  
Mobile Phase 40 % ACN 60 % 25 mM Sodium Phosphate  
Buffer pH= 2.4  
Flow Rate= 1.5 mL/min UV 210 nm 2 $\mu\text{l}$   
Elution order: (1) Piroxicam, (2) Sulindac, (3) Tolmetin, (4) Naproxen, (5) Ibuprofen,  
(6) Diclofenac, (7) Celebrex (equal portions of approximately 1 mg/mL solutions)

No matter how many samples you have, or how complex they may be...

you need to feel confident that you can achieve reproducible results without wasting valuable time testing different columns and configurations. And that's why ZORBAX Eclipse Plus columns are such a significant breakthrough.

Simply put, Eclipse Plus columns deliver the sharpest peak shapes for basic compounds from the very first injection. And they continue to deliver the long-term reliability that is so critical for methods that last 15 years or more.

The following table will help you select the column dimension, ID, and bonded phase that will deliver the best results for your application.

*ZORBAX Eclipse Plus columns are available in 1.8, 3.5, and 5 µm particle sizes for all your analytical, high-resolution, and fast LC analyses.*



## ZORBAX Eclipse Plus Ordering Information

Size (mm)	Particle Size (µm)	Eclipse Plus C18 USP L1	Eclipse Plus C8 USP L7	NEW Eclipse Plus Phenyl Hexyl USP L11	NEW Eclipse Plus PAH
9.4 x 250	5	*	*	*	*
4.6 x 250	5	959990-902	959990-906	959990-912	959990-918
4.6 x 150	5	959993-902	959993-906	959993-912	959993-918
4.6 x 100	5	959996-902	959996-906	959996-912	959996-918
4.6 x 50	5	959946-902	959946-906	*	*
4.6 x 150	3.5	959963-902	959963-906	959963-912	959963-918
4.6 x 100	3.5	959961-902	959961-906	959961-912	959961-918
4.6 x 75	3.5	959933-902	959933-906	959933-912	*
4.6 x 50	3.5	959943-902	959943-906	959943-912	959943-918
4.6 x 30	3.5	959936-902	959936-906	959936-912	*
4.6 x 100	1.8	959964-902	959964-906	959964-912	959964-918
4.6 x 75	1.8	959951-902	*	*	*
4.6 x 50	1.8	959941-902	959941-906	959941-912	959941-918
4.6 x 30	1.8	959931-902	959931-906	959931-912	959931-918
3.0 x 250	5	*	*	*	959990-318
3.0 x 150	5	959993-302	959993-306	*	*
3.0 x 150	3.5	959963-302	959963-306	959963-312	*
3.0 x 100	3.5	959961-302	959961-306	959961-312	*
3.0 x 100	1.8	959964-302	959964-306	959964-312	*
3.0 x 50	1.8	959941-302	959941-306	959941-312	*
2.1 x 250	5	*	*	*	959790-918
2.1 x 150	5	959701-902	959701-906	959701-912	959701-918
2.1 x 150	3.5	959763-902	959763-906	959763-912	*
2.1 x 100	3.5	959793-902	959793-906	959793-912	959793-918
2.1 x 50	5	959746-902	959746-906	*	*
2.1 x 50	3.5	959743-902	959743-906	959743-912	*
2.1 x 30	3.5	959733-902	959733-906	959733-912	*
2.1 x 100	1.8	959764-902	959764-906	959764-912	959764-918
2.1 x 50	1.8	959741-902	959741-906	959741-912	959741-918
2.1 x 30	1.8	959731-902	959731-906	959731-912	*
4.6 x 12.5	5	820950-936	820950-937	820950-938	820950-939
2.1 x 12.5	5	821125-936	821125-937	821125-938	821125-939
Guard Hardware Kit		820888-901	820888-901	820888-901	820888-901

\* Custom columns are also available. Contact your local Agilent Representative or Agilent Authorized Distributor.

For the latest product specifications, chromatogram libraries, methods, and other resources, visit [www.agilent.com/chem/eclipseplus24](http://www.agilent.com/chem/eclipseplus24)

# ZORBAX



## Eliminate the frustration of failed separations with Agilent's complete ZORBAX Eclipse LC column portfolio.

# ECLIPSE

Eclipse LC columns are the only scalable column family that lets you...

- **Minimize tailing and maximize peak symmetry** for bases, acids and neutrals.
- **Develop and transfer methods** without re-validation.
- **Deliver reproducible results** across a wide pH range and under varied separation conditions.
- **Rapidly scale from analytical to prep** – or from conventional to ultra-fast methods – with particle sizes from 1.8  $\mu\text{m}$  to 7  $\mu\text{m}$ .
- **Process samples up to 20 times faster – and improve resolution up to 60%** – with high pressure ZORBAX Rapid Resolution High-Throughput columns (maximum pressure: 600 bar).

Additionally, Eclipse LC columns feature double-encapsulation, and a unique bonding process. This ensures lot-to-lot consistency, extends column life... and allows you to retain your methods for the long run.

### ZORBAX Eclipse XDB LC columns are a reliable choice for HPLC method development. Here's why.

From antibiotics and drugs of abuse... to amino acids... to pesticides and food additives... Eclipse XDB columns allow you to complete a wide range of applications with one column family.

Eclipse XDB Columns...

- Provide good peak shape and resolution over a broad pH range (pH 2 to pH 9).
- Perform reliably under high pressures and flows – a result of Agilent's proprietary ZORBAX hard-walled silica particles.
- Offer method development flexibility with

broad selectivity choices of four bonded phases – plus a range of particle sizes and dimensions for your analytical, fast, high-throughput, and prep applications.

- Are supported by an extensive library of methods and application development protocols. See the **Eclipse XDB Application Guide** (publication 5989-4086EN) for more information.

No wonder Eclipse XDB columns are an analytical and regulatory standard across many diverse industries – such as pharmaceutical, environmental, chemical, food, and nutraceutical.

*Every ZORBAX Column Undergoes Rigorous Quality Assurance Testing – and We Prove it In Writing.*



## From particle size to ID and length...

We offer an unsurpassed variety of columns to accommodate virtually any application.

ZORBAX Eclipse Plus and  
Eclipse XDB RRHT **1.8 µm**  
LC columns for high-pressure  
use (maximum pressure:  
600 bar, 9000 psi)

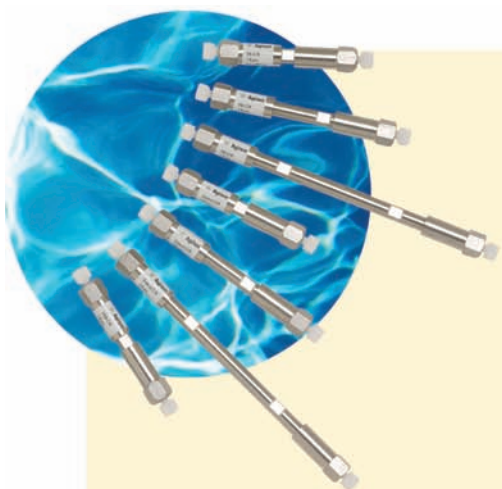
	Eclipse Plus C18	Eclipse Plus C8	Eclipse Plus Phenyl-Hexyl	Eclipse Plus PAH	Eclipse XDB-C18	Eclipse XDB-C8	Extend-C18
4.6 x 150 mm	959994-902	—	—	—	—	—	—
4.6 x 100 mm	959964-902	959964-906	959964-912	959964-918	928975-902	928975-906	728975-902
4.6 x 75 mm	959951-902	—	—	—	—	—	—
4.6 x 50 mm	959941-902	959941-906	959941-912	959941-918	927975-902	927975-906	727975-902
4.6 x 30 mm	959931-902	959931-906	959931-912	959931-918	924975-902	924975-906	724975-902
4.6 x 20 mm	—	—	—	—	926975-902	926975-906	726975-902
3.0 x 150 mm	959994-302	—	—	—	—	—	—
3.0 x 100 mm	959964-302	959964-306	959964-312	—	928975-302	928975-306	728975-302
3.0 x 50 mm	959941-302	959941-306	959941-312	—	927975-302	927975-306	727975-302
3.0 x 30 mm	—	—	—	—	924975-302	924975-306	724975-302
3.0 x 20 mm	—	—	—	—	926975-302	926975-306	726975-302
2.1 x 150 mm	959794-902	—	—	—	—	—	—
2.1 x 100 mm	959764-902	959764-906	959764-912	959764-918	928700-902	928700-906	728700-902
2.1 x 50 mm	959741-902	959741-906	959741-912	959741-918	927700-902	927700-906	727700-902
2.1 x 30 mm	959731-902	959731-906	959731-912	—	924700-902	924700-906	724700-902
2.1 x 20 mm	—	—	—	—	926700-902	926700-906	726700-902

■ New in 2008

ZORBAX StableBond  
and Rx-SIL RRHT **1.8 µm**  
LC columns for high-pressure  
use (maximum pressure:  
600 bar, 9000 psi)

	SB-C18	SB-C8	SB-Phenyl	SB-CN	SB-Aq	Rx-SIL	Bonus-RP
4.6 x 150 mm	829975-902	829975-906	829975-912	829975-905	829975-914	—	—
4.6 x 100 mm	828975-902	828975-906	828975-912	828975-905	828975-914	828975-901	828668-901
4.6 x 75 mm	—	—	—	—	—	—	830668-901
4.6 x 50 mm	827975-902	827975-906	827975-912	827975-905	827975-914	827975-901	827668-901
4.6 x 30 mm	824975-902	824975-906	824975-912	824975-905	824975-914	—	—
4.6 x 20 mm	826975-902	826975-906	—	—	—	—	—
3.0 x 150 mm	829975-302	829975-306	829975-312	829975-305	—	—	—
3.0 x 100 mm	828975-302	828975-306	828975-312	828975-305	828975-314	828975-301	828668-301
3.0 x 50 mm	827975-302	827975-306	827975-312	827975-305	827975-314	827975-301	827668-301
3.0 x 30 mm	824975-302	824975-306	—	824975-305	—	—	—
3.0 x 20 mm	826975-302	826975-306	—	—	—	—	—
2.1 x 150 mm	820700-902	820700-906	820700-912	820700-905	—	—	—
2.1 x 100 mm	828700-902	828700-906	828700-912	828700-905	828700-914	828700-901	828768-901
2.1 x 50 mm	827700-902	827700-906	827700-912	827700-905	827700-914	827700-901	827768-901
2.1 x 30 mm	824700-902	824700-906	824700-912	824700-905	824700-914	—	—
2.1 x 20 mm	826700-902	826700-906	—	—	—	—	—

■ New in 2008



### Only Agilent ZORBAX Eclipse LC columns combine choice and flexibility with...

- Proven performance and reproducibility through millions of injections
- Extra-dense bonding and double-endcapping
- Superior scalability
- Excellent performance for all sample types
- Results you can trust across a wide range of separation conditions
- Extensive Applications Library for faster method development
- Worldwide support, worldwide supply

Other bonded phases are also available.  
Visit our online store for details: [www.agilent.com/chem/store](http://www.agilent.com/chem/store)



ZORBAX Eclipse  
Rapid Resolution  
**3.5  $\mu$ m** HPLC columns

	Eclipse XDB-C18	Eclipse XDB-C8	Eclipse XDB-CN	Eclipse XDB-Phenyl
4.6 x 150 mm	963967-902	963967-906	963967-905	963967-912
4.6 x 100 mm	961967-902	961967-906	961967-905	*
4.6 x 75 mm	966967-902	966967-906	966967-905	966967-912
4.6 x 50 mm	935967-902	935967-906	*	935967-912
4.6 x 30 mm	934967-902	934967-906	*	*
4.6 x 20 mm	932967-902	932967-906	*	*
3.0 x 150 mm	963954-302	963954-306	963954-305	963954-312
3.0 x 100 mm	961967-302	961967-306	*	961967-312
2.1 x 150 mm	930990-902	930990-906	*	*
2.1 x 100 mm	961753-902	961753-906	961753-905	*
2.1 x 50 mm	971700-902	971700-906	*	*
2.1 x 30 mm	974700-902	974700-906	*	*
2.1 x 20 mm	972700-902	972700-906	*	*
1.0 x 150 mm	963600-902	963600-906	*	*
1.0 x 50 mm	965600-902	965600-906	*	*
1.0 x 30 mm	961600-902	961600-906	*	*
<b>Capillary Glass-lined Columns</b>				
0.5 x 150 mm	5064-8288	—	—	—
0.5 x 35 mm	5064-8298	—	—	—
0.3 x 150 mm	5064-8271	—	—	—
<b>Cartridge Columns</b>				
4.6 x 75 mm	7995118-344	7995108-344	—	—
3.0 x 75 mm	7995230-344	—	—	—
Cartridge Holder	5021-1845	5021-1845	—	—
Guard Cartridges 4.6 x 12.5 mm, 4pk	820950-925	820950-926	820950-935	820950-927
Guard Cartridges 2.1 x 12.5 mm, 4pk	821125-926	821125-926	821125-935	821125-926
Guard Hardware Kit for 4.6 & 2.1 mm	820888-901	820888-901	820888-901	820888-901*
Guard Cartridges 1.0 x 17 mm, 3pk	5185-5921	5185-5921	*	—

\*Custom column available. Contact your local Agilent Representative or Agilent Authorized Distributor

ZORBAX Eclipse  
**5  $\mu$ m** HPLC columns

	Eclipse XDB-C18	Eclipse XDB-C8	Eclipse XDB-CN	Eclipse XDB-Phenyl
21.2 x 150 mm	970150-902	970150-906	—	—
21.2 x 100 mm	970100-902	970100-906	—	—
21.2 x 50 mm	970050-902	970050-906	—	—
9.4 x 250 mm	990967-202	990967-206	—	—
4.6 x 250 mm	990967-902	990967-906	990967-905	990967-912
4.6 x 150 mm	993967-902	993967-906	993967-905	993967-912
4.6 x 50 mm	946975-902	946975-906	—	—
3.0 x 250 mm	990967-302	990967-306	990967-305	990967-312
3.0 x 150 mm	993967-302	993967-306	993967-305	993967-312
2.1 x 150 mm	993700-902	993700-906	993700-905	993700-912
2.1 x 150 mm	960967-902	960967-906	960967-905	960967-912
<b>Capillary Glass-lined Columns</b>				
0.5 x 250 mm	5064-8288	—	—	—
0.5 x 150 mm	5064-8287	—	—	—
0.5 x 35 mm	5064-8296	—	—	—
0.3 x 250 mm	5064-8269	—	—	—
0.3 x 150 mm	5064-8291	—	—	—
0.3 x 35 mm	5064-8297	—	—	—
<b>Cartridge Columns</b>				
4.6 x 250 mm	7995118-585	7995108-585	—	—
4.6 x 150 mm	7995118-595	7995108-595	—	—
Cartridge Holder	5021-1845	5021-1845	—	—
Guard Cartridges 17 x 7.5 mm	820212-925	820212-926	—	—
Guard Cartridges 4.6 x 12.5 mm, 4pk	820950-925	820950-926	820950-935	820950-927
Guard Cartridges 4.0 x 4 mm, 10pk	7995118-504	7995118-504	—	—
Guard Cartridges 2.1 x 12.5 mm, 4pk	821125-926	821125-926	821125-935	821125-926

ZORBAX Eclipse  
**7  $\mu$ m** HPLC columns

	Eclipse XDB-C18	Eclipse XDB-C8	Eclipse XDB-CN	Eclipse XDB-Phenyl
21.2 x 250 mm	977250-102	977250-106	—	—
21.2 x 150 mm	977150-102	977150-106	—	—

# When you choose Agilent ZORBAX Eclipse LC columns, you get more than just a dependable product.

You also get **40 years** of chromatography expertise from the world's largest chromatography supplier. So you can avoid problems and more effectively address any challenges your lab might face.

For more information about Agilent's ZORBAX Eclipse Plus and Eclipse LC column portfolios, contact your **local Agilent Representative** or **Agilent Authorized Distributor**

Call toll free: **1 800 227 9770**, option 1  
(in the US and Canada)

Or, visit us online at  
[www.agilent.com/chem/eclipseplus24](http://www.agilent.com/chem/eclipseplus24)

For technical assistance in selecting the column that provides reliable, reproducible results — on time, every time — call **1 800 227 9770**, option 4 (in the US and Canada).

For information about the Agilent 1200 Series Rapid Resolution LC System, visit us online at  
[www.agilent.com/chem/1200RR](http://www.agilent.com/chem/1200RR)

Don't forget to visit Agilent's Online Store at  
[www.agilent.com/chem/store](http://www.agilent.com/chem/store) for easy ordering and up-to-the-minute information.

*Count on Agilent for world-class technical support... on the Web, by phone, or in person.*



Information, descriptions, and specifications in this publication are subject to change without notice. All rights reserved. Reproduction, adoption or translation without prior written permission is prohibited, except as allowed under copyright laws.

©Agilent Technologies, Inc. 2008  
Printed in the USA April 21, 2008  
5989-8541EN



**Agilent Technologies**