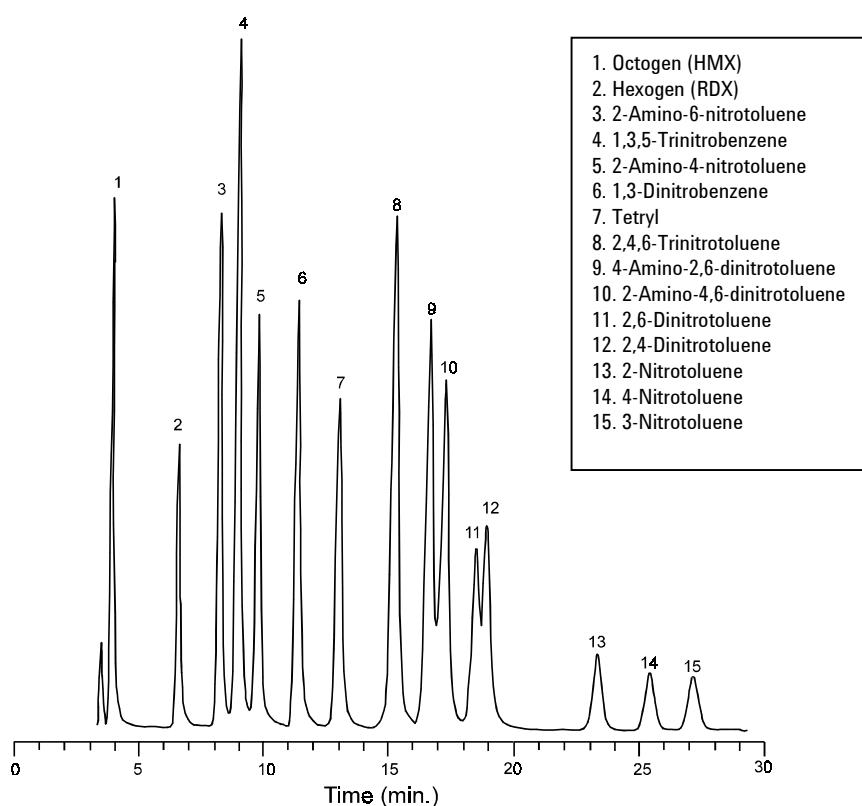


# Reversed-Phase Separation 15 Explosives from Soil Extract

Application  
Environmental  
Robert Ricker



## Highlights

- *Medium-bore columns reduce both the amount of sample required and generation of mobile-phase waste. This medium-sized bore does not require a special low-volume chromatograph but does require that the system contain minimal dead volume.*
- *Isocratic operation has the advantage of quick turn-around between injections since re-equilibration is not required.*

Courtesy of Ursula Hechler, Lab Dr. Wessling, Altenberge, Germany, Terra. Tech. 1, 27-28 (1995)

**Conditions:**  
**ZORBAX SB-C18 (3 x 250 mm) (Agilent P/N: 880975-302)**  
**Mobile Phase: Methanol:Water (50:50) (v/v)**  
**Injection volume 10µl, 0.3 mL/min, Ambient, Detect. UV (230 nm)**



**Agilent Technologies**

*Robert Ricker is an application chemist  
based at Agilent Technologies, Wilmington,  
Delaware.*

For more information on our products and  
services, visit our website at:  
[www.agilent.com/chem](http://www.agilent.com/chem)

Copyright© 2002 Agilent Technologies, Inc.  
All Rights Reserved. Reproduction,  
adaptation or translation without prior  
written permission is prohibited, except as  
allowed under the copyright laws.

Agilent shall not be liable for errors  
contained herein or for incidental or  
consequential damages in connection with  
the furnishing, performance, or use of this  
material.

Information, descriptions, and specifications  
in this publication are subject to change  
without notice.

Printed in the USA  
April 25, 2002  
5988-6342EN



**Agilent Technologies**