


OpenLAB Enterprise Content Manager Administrative Dashboard

Data Sheet



Agilent Technologies

OpenLAB ECM

Administrative Dashboard

Powered by Accelrys

Server Status

SERVRNAME	TYPE	LOCATION	LASTUPDATE	SERVERSTATUS
A0065060	Application	a0065060	5/20/08 9:07 PM	Offline - Not Responding
AGILENTLLCHIMNEYTEST	Scheduler	Not configured	5/28/08 6:19 PM	Online - Not Responding
AGILENTLLPIPPIN	Scheduler	Not configured	10/16/08 7:34 PM	Online - Running
LLCHIMNEYTEST	Application	SDMTEST1	5/20/08 12:46 AM	Offline - Not Responding
SDMTEST1	Application	SDMTEST1	10/1/08 3:01 AM	Online - Not Responding
SDMTEST1	File Transfer	SDMTEST1	10/16/08 7:35 PM	Online - Running with Error

System Status

Files in System	System Errors	Metadata Tables	Audit Trail Tables	DBMS Jobs
1642	0	2	19	0

File Activity Status

Files in Download Queue	Files in Email Queue	Failed Files	Files Uploaded Last Day	Files Uploaded Last 7 Days	Files Uploaded Last 30 Days
0	0	1011	412	412	412
Files Moved Last Day	Files Moved Last 7 Days	Files Moved Last 30 Days	Files Filtered Last Day	Files Filtered Last 7 Days	Files Filtered Last 30 Days
412	412	412	0	0	0

Cache Activity Status

Files in Cache	Files Not Accessed Last 3 Days	File Cache Size (MB)
412	0	0.02

Scheduler Agent Status

Scheduler Agent Last Day	Scheduler Agent Last 7 Days	Scheduler Agent Last 30 Days
412	412	412

User Activity Status

Users Logged in Last Day	Users Logged in Last 7 Days	Users Logged in Last 30 Days
5	5	39

Users and Groups

User Accounts	Group Members	Privileges by Role
8	0	11

Click on results to show detail reports

All dates displayed in UTC time (Coordinated Universal Time or Greenwich Mean Time)

Agilent OpenLAB Enterprise Content Manager

© Scientific Software, Inc. 2000-2005, © Agilent Technologies, Inc. 2008

10/16/2008

Figure1. The top level view of the OpenLAB ECM Administrative Dashboard provides a window into the current system state.

To keep their OpenLAB Enterprise Content Management (ECM) system running at peak performance, System Administrators require detailed information of system status, configuration and historical activity logs. The OpenLAB ECM Administrative Dashboard gives system administrators a view into this additional information. With this product they can better maintain their systems by seeing problems before they affect end users. When problems do occur this dashboard will help to more quickly troubleshoot and correct the issue.

The main dashboard screen provides an easy to read summary of system and server status, as well as activity logs for tasks, file processing and more. Clicking on any of the summary items will generate a detailed report expanding on the item.

Key Benefits

- Manage OpenLAB ECM more effectively.
- Increase system availability and uptime.
- Monitor system bottlenecks.
- Reduce troubleshooting efforts.
- Expand and customize the reports with a PSO Services engagement.



Agilent Technologies

Built in Report Types

The ECM Administrative Dashboard includes 31 fixed information reports, covering a broad range of current status and historical information. The following reports are included:

Storage Location

- ✓ # of files in the system
- ✓ # of files in the last day/week/month
- ✓ Volume of files in system
- ✓ Volume of files in the last day/week/month

Group

- ✓ List of user members
- ✓ List of system permissions
- ✓ List of folder permissions

User

- ✓ List and status of users
- ✓ List of group memberships
- ✓ List of system permissions
- ✓ List of folder permissions

Scheduler Agents

- ✓ Current status
- ✓ # of files uploaded in the last day/week/month
- ✓ Number of tasks run in the last day/week/month
- ✓ Number of files uploaded by computer in the last day/week/month

Statistics

- ✓ # of users logged in in the last day/week/month
- ✓ Number of metadata tables
- ✓ Number of audit trail tables
- ✓ DBMS jobs running
- ✓ Files in download queue
- ✓ Files in download queue
- ✓ Privileges by role
- ✓ Available cache
- ✓ Volume of data in cache

Application Server

- ✓ Current status
- ✓ List of failed files
- ✓ Number of files filtered in the last day/week/month

File Transfer Server

- ✓ Current status
- ✓ List of failed files
- ✓ # of files moved in the last day/week/month

Expanding Your Report Portfolio

Would you need customization of any of the existing reports? Would a report better meet your needs if it included some additional information? Or maybe you'd like a completely new report.

Agilent's Professional Services Organization can provide these services and more.

Powered by Accelrys Pipeline Pilot

Agilent Technologies has partnered with Accelrys Software to provide Agilent customers a range of benefits. The ECM Administrative Dashboard is the first integrated product to be released as a result of this partnership.

The Accelrys Pipeline Pilot product is an exceptional "middleware" technology that can be used to bridge isolated informatics/IT applications and databases. It enables integration and web portal data aggregation. The ECM Administrative Dashboard is the first integrated product released as a result of this partnership.



OpenLAB Enterprise Content Manager (ECM)

OpenLAB Enterprise Content Manager (ECM) is a software solution that helps you make better decisions faster than ever. By providing a secure, central repository and rich content services, ECM allows you to create, manage, collaborate, archive, and re-use all of your business critical information with ease. ECM manages raw data and human readable documents of any data, in any form, from any supplier, and its web-based user interface drastically reduces the learning curve for new users.

OpenLAB Enterprise Content Manager (ECM) has a modular architecture that allows you to tailor the system topography to your corporate environment. As your business needs grow, OpenLAB ECM can grow with you; start small and add additional servers when necessary.

Because it was born in the life sciences laboratory environment, OpenLAB ECM has the unique ability to manage data generated from analytical instruments and measurement devices (e.g. chromatography systems, mass spectroscopy, NMR, imaging systems) as well as any document type. OpenLAB ECM also has a complete set of features designed to aid in regulatory compliance.

OpenLAB ECM is a proven solution that has helped organizations across a number of industries get control of their business critical information while improving regulatory compliance, reducing operational costs, boosting productivity levels, and increasing customer satisfaction.

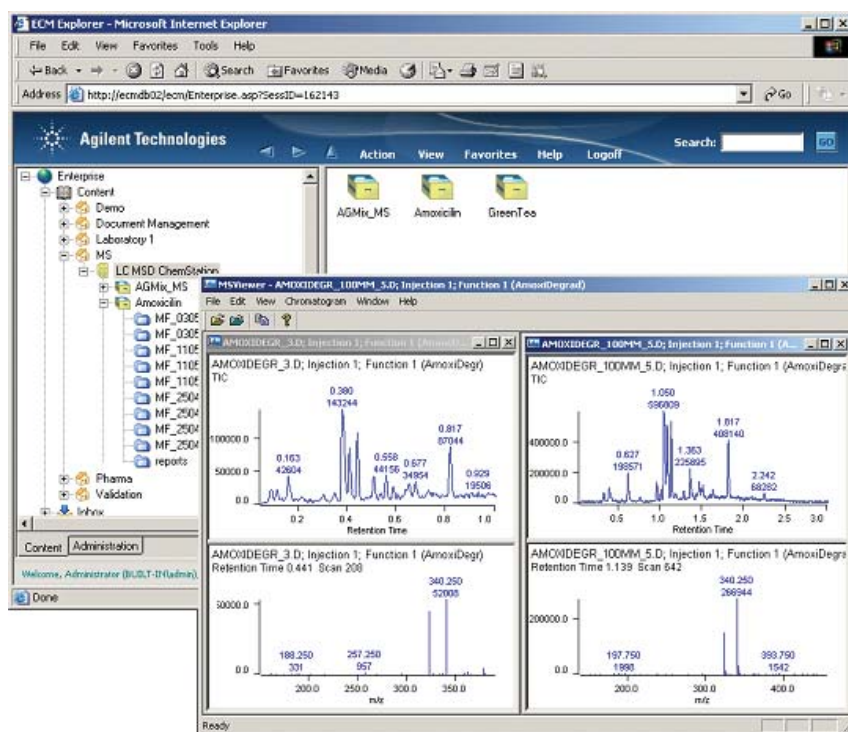


Figure 2.
Agilent's OpenLAB Enterprise
Content Manager (ECM)

Visit www.agilent.com/chem/informatics-software
or call toll free **1-800-227-9770**
(U.S. and Canada).

In other countries, please call your local
Agilent Technologies analytical sales office or
Authorized Agilent Technologies Distributor.

This information is subject to change without notice.

© Agilent Technologies, Inc. 2008
Printed in U.S.A. December 17, 2008
5990-3424EN



Agilent Technologies