

# Agilent OpenLAB Chromatography Data System (CDS) for ChemStation Users

## Data Sheet

OpenLAB CDS ChemStation Edition is the next major revision (C.01) of Agilent's well-established ChemStation software and provides a number of new features that will make your work in the laboratory more efficient:

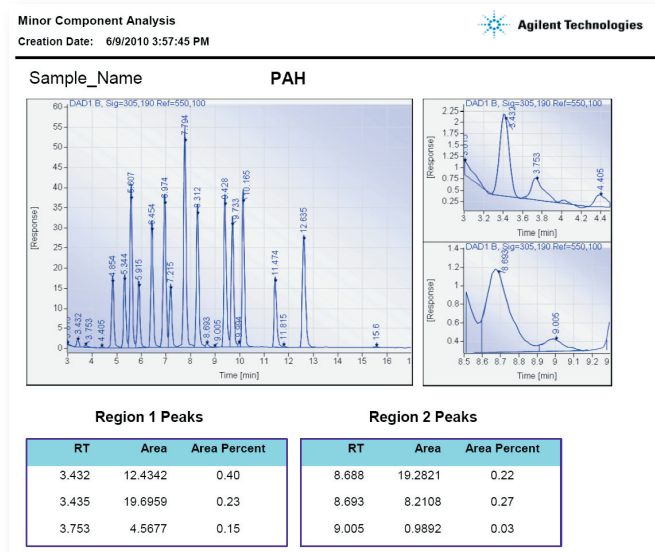
- More intuitive custom reporting with new OpenLAB Intelligent Reporting
- Faster and more flexible result review, reprocessing and reporting
- Better instrument utilization with remote access to any ChemStation-controlled instrument in your laboratory
- Better user management with user privileges and password protection - even on a stand-alone workstation

### Complex Reporting Made Easy with Intelligent Reporting

OpenLAB CDS Intelligent Reporting allows you to create state-of-the-art standard or custom reports in ChemStation, initially for LC and GC data. An easy-to-use report template editor allows you to create report templates using simple drag-and-drop and configuration operations. OpenLAB CDS Intelligent Reporting comes with a number of pre-defined report templates that can be used as-is, or serve as a starting point for reports tailored to your specific needs.

Intelligent reports can include standard or advanced result calculations. Easily create reports for typical pharmaceutical and chemical applications such as, system suitability, impurity profiling, BTU or content uniformity (see figure 1).

Intelligent reporting is fully integrated into the ChemStation software and allows you to create single injection reports as well as sequence summary reports using familiar workflows. No re-learning required.



**Figure 1.** Intelligent Reporter lets you flexibly design reports the way you need them - e.g., showing minor components next to the full-scale chromatogram.



## More Efficient Result Review with Intelligent Reporting

Intelligent Reporting allows you to include limit checks, automatically flag outliers by pass/fail criteria, and include graphical visualization of results in e.g., trend charts. All of these make report review faster and more efficient.

## New and Improved Workflows for Fast and Flexible Result Review, Reprocessing and Reporting

### Fast Report Generation

A new Review View in OpenLAB CDS ChemStation Edition enables you to get your reports ten times faster than today; simply select the data and the report template and create one or several reports.

### Fast Data Analysis

A new Recalculate Mode allows you to quickly apply methods to a set of single injections, parts of a sequence or a complete sequence (see figure 2). The Recalculate Mode allows you to work with your samples in a simple batch mode

— supporting the flexibility required for Research and Development workflows. This is in contrast to the **Reprocess Mode**, which lets you work on the entire acquisition sequence and ensures sequence integrity. The **Reprocess Mode** improves sequence-based routine operation in the pharmaceutical and chemical industry.

### Flexible Data Handling

In OpenLAB CDS ChemStation Edition, it is now possible to combine data from different sequences or from a sequence and single runs into a virtual sequence (see figure 2), e.g., to compare the results during auto-stepping, or to create a cross-sequence report. These virtual sequences can also be stored into OpenLAB Enterprise Content Manager (ECM) as a permanent record.

### Support for Master Method Concept

OpenLAB CDS ChemStation Edition handles master methods and sequence methods in a transparent manner, e.g., by visualizing them in separate partitions of the methods tree.

## Scalability

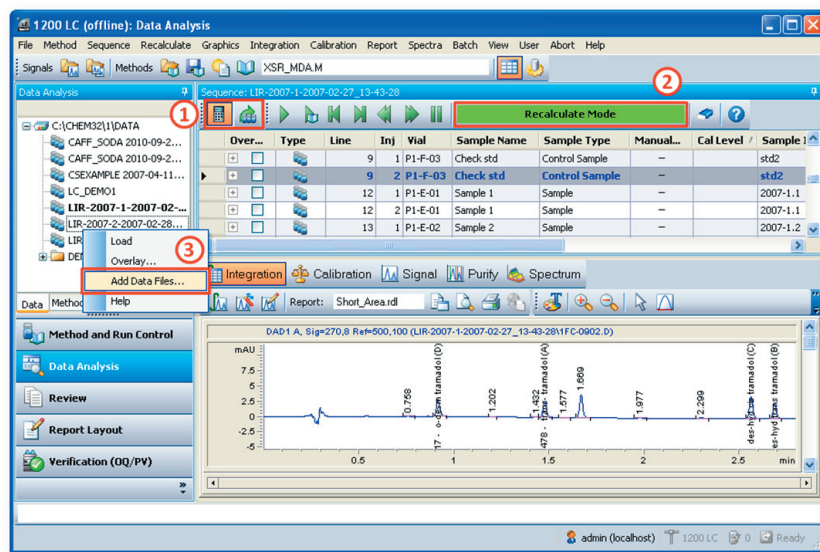
OpenLAB CDS ChemStation Edition scales from a stand-alone workstation over a networked workstation configuration to a fully distributed system with remote instrument control.

With the fully distributed system all instruments are accessible from any client over the network. Data from any instrument can be accessed and safely shared by users anywhere on the network, increasing overall laboratory efficiency.

In the fully distributed system, or if compliance with GLP/GMP and 21 CFR part 11 is required, data is stored in OpenLAB ECM. In addition, the query functionality provided by ECM allows you to quickly search and retrieve the data you are interested in.

## User Privileges and Password Protection – Even on a Stand-Alone Workstation

With OpenLAB CDS ChemStation Edition, users are managed in OpenLAB Shared Services. This allows you to set up users and assign roles even on a stand-alone workstation. ChemStation user roles can be set up to e.g., allow an operator to acquire, but not reprocess data.



**Figure 2.** Data Analysis is now separated into a Recalculate and Reprocess Mode. Users can switch between the two modes (1) and the mode is clearly indicated (2). It's possible to combine data files from different data sets for data analysis (3).

Microsoft is a U.S. registered trademark of Microsoft Corporation

Information, descriptions, and specifications in this publication are subject to change without notice.

© Agilent Technologies, Inc. 2011  
Printed in the USA April 21, 2011  
5990-8026EN

To learn more about OpenLAB CDS, visit us at  
[www.agilent.com/chem/openlabcds](http://www.agilent.com/chem/openlabcds)



**Agilent Technologies**