



Agilent MassHunter Workstation Software – Offline Qualitative and Quantitative Analysis

Installation Guide

- Step 1. Prepare for installation [2](#)
- Step 2. Install the Qualitative Analysis program [3](#)
- Step 3. Install the Quantitative Analysis program [4](#)
- Step 4. Install and configure Excel [7](#)
- Step 5. Install Quantitative Compliance program [11](#)
- Step 6. Install Quantitative Reports [12](#)
- Step 7. Check Excel for MassHunter Reporting Add-Ins [13](#)
- Step 8. Install the DA Reprocessor - Offline Utilities (LC/MS only) [15](#)

Use this guide to install or upgrade an offline copy of the MassHunter Workstation software.

This guide applies to MassHunter Qualitative Analysis B.05.00 and MassHunter Quantitative Analysis B.05.00 and higher, until superseded.

CAUTION

MassHunter and Excel software must be installed and set up in the order described in this guide, or the printing of reports will fail.



Agilent Technologies

Step 1. Prepare for installation

The MassHunter Qualitative Analysis B.05.00 program is supported only on 64-bit Windows 7 Professional. Quantitative Analysis B.05.00 is supported in 64-bit Windows 7 Professional, 32-bit Windows Vista SP2, and 32-bit Windows XP SP3.

- 1 Use the **Uninstall a program** or **Programs and Features** command in Control Panel to remove programs that you plan to upgrade, if they are installed on your system.
 - Excel (see [page 7](#) for supported versions of Excel)
 - Agilent MassHunter Workstation Qualitative Analysis
 - Agilent MassHunter Workstation Quantitative Analysis
 - Agilent MassHunter Workstation Quantitative Analysis Reporting

Note: Remove only the programs that you plan to upgrade at this time. Do not remove programs that need only service pack installation.

Run Windows Update to make sure you have the latest critical updates and security fixes.

- For Windows Vista: Click **Start > Control Panel > System and Maintenance > Windows Update**.
- For Windows 7: Click **Start > Control Panel > System and Security > Windows Update**.

- 2 Verify Windows Update is completed before you continue.

CAUTION

If you do not run Windows Update, your system may be vulnerable to security problems. Confirm that the LAN power management has not been activated by a Windows Update program.

Step 2. Install the Qualitative Analysis program

Do this procedure if you want to install the Qualitative Analysis program.

- 1 Verify that no other program is running on your system, including Windows Update.

Installation of the Qualitative Analysis program will fail if Windows Update is running, even in the background.

- 2 Insert the Qualitative Analysis installation disc into the DVD drive.
- 3 From the installation disc, right-click **Setup.exe**, and then select **Run as administrator**.
- 4 If you are asked whether to allow the program to make changes to your system, click **Yes**.
- 5 If you see a welcome page for the installation wizard, click **Next**.
- 6 In the License Agreement page, click **I accept the terms of the license agreement**, and then click **Next**.
- 7 In the **Choose destination location** page, click **Next** to accept the default destination location.

The default is **C:\Program Files\Agilent\MassHunter\Workstation\Qual**.

- 8 In the **Choose location for customer data files** page, click **Next** to accept the default destination location.
- 9 In the **Start copying files** page, review the settings then click **Next**.
- 10 If you get a message that indicates that the screen resolution is not set to the required 1280 x 1024 resolution, click **OK**.

The best resolution for MassHunter is either 1600 x 1200 (for 4 x 3 aspect ratio) or 1920 x 1080 (for 16 x 9).

- 11 If you see a Notepad window that prompts you to install other options, close the Notepad window.
- 12 When the installation completion message is displayed, click **Finish**.
- 13 If the folder **Service Packs** exists on the installation disc, then:
 - a Open the **Service Packs** folder. If the folder contains another folder, such as **SP2**, open that folder.
 - b Locate the installation file, ending with **SP x.exe**.
 - c Right-click the installation file and select **Run as administrator**.

Follow the instructions to install the service pack.

Step 3. Install the Quantitative Analysis program

Do this procedure if you want to install the Quantitative Analysis program.

- 1 Verify that no other program is running on your system. Installation of the Quantitative Analysis program will fail if Windows Update is running, even in the background.
- 2 Insert the Quantitative Analysis installation disc into the DVD drive.
- 3 From the root directory of the installation disc, double-click **setup_quant.exe**.
- 4 If the operating system is Windows 7 or Windows Vista, right-click **setup_quant.exe**, then select **Run as administrator**.
- 5 When prompted, select the language for the installation.
- 6 If prompted, select **Install** in the Agilent Installation Qualification Tool dialog box.
- 7 In the Welcome to the InstallShield Wizard window, click **Next** to continue with the installation.
- 8 In the License Agreement window, click **I accept the terms in the license agreement**, and then click **Next**.
- 9 In the Destination Folder window, click **Next** to accept the default destination location.

The default is **C:\Program Files\Agilent\MassHunter\Workstation\Quant**.

- 10 In the Customer Data Folder window, click the **Change** button and select the path used to store data files.
- 11 Click the **OK** button, and then click **Next**.

This data file location is typically the path used by the MassHunter Data Acquisition Workstation to store acquired data.

Step 3. Install the Quantitative Analysis program

12 When the Choose Desktop Icons window appears, mark the check boxes for the instruments that apply. Clear the check boxes for the instruments that do not apply.

13 Click **Next**. See Figure 1.

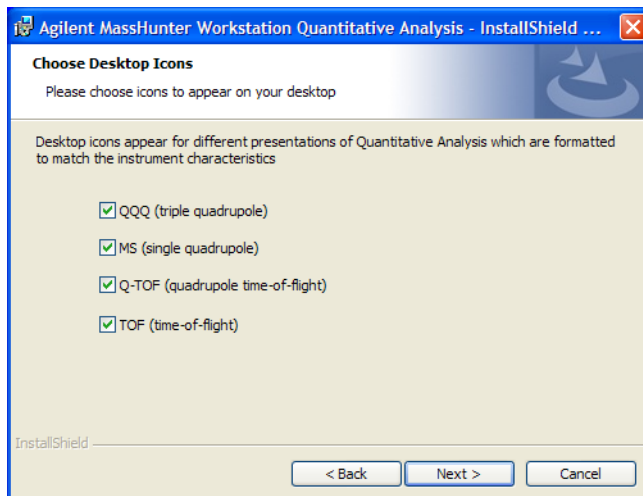


Figure 1 Choose Desktop Icons dialog box

14 When the Ready to Install the Program window appears, click **Install** to begin.

15 When the installation begins, the Installing Agilent MassHunter Workstation Quantitative Analysis window appears.

16 When the InstallShield Wizard Completed message is displayed, click **Finish**.

Step 3. Install the Quantitative Analysis program

- 17** Confirm that the icons you selected, as well as Library Editor and Unknowns Analysis, appear on your desktop.



- 18** If the folder **Service Packs** exists on the installation disc, then:
- a** Open the **Service Packs** folder. If the folder contains another folder, such as **SP2**, open that folder.
 - b** Locate the installation file, ending with **SP x.exe**. For 64-bit operating systems, locate the installation file that contains “x64.”
 - c** Right-click the installation file and select **Run as administrator**.
 - d** Follow the instructions to install the service pack.

Step 4. Install and configure Excel

Do this procedure if you want to upgrade and configure Excel to run with your MassHunter program.

Installations of Agilent MassHunter Workstation which includes the Qualitative Analysis program support only this version of Excel:

- 64-bit Windows 7 Professional: Excel 2010 or Office 2010

Installations of Agilent MassHunter Workstation that include only the Quantitative Analysis program also support these versions of Excel:

- 32-bit Windows Vista SP2: Excel 2007, Office 2007, Excel 2010, or Office 2010
- 32-bit Windows XP SP3: Excel 2007, Office 2007, Excel 2010, or Office 2010

NOTE

The images in this procedure can appear slightly different, depending on which version of Excel you are installing or upgrading.

- 1 Close all MassHunter Workstation programs.
- 2 Click **Start > All Programs > Agilent > MassHunter Workstation > Acq Tools > Remove MassHunter Processes** to make sure that all MassHunter processes are stopped.
- 3 Start the installation:
 - a Follow the instructions that came with Excel or Office to start the installation.
 - b If you are prompted to enter the Product Key, do so.
If you do not enter the product key now, Excel will remind you later, which can interfere with report automation.
 - c If you are installing Excel, or if you are installing Office and you want to install all Office options, click **Install Now**. Continue at [step 5](#).
 - d If you are installing Office and you want to customize your installation, then click **Customize**.
- 4 If Excel is already installed, or you are doing a customized Office installation:

Step 4. Install and configure Excel

- For Excel, check that the disc icon next to **Microsoft Office** appears white. If not, right-click **Microsoft Office** and click **Run all from My Computer**. Then click **Continue** and continue the installation as instructed.
- For Office, check that the disc icon next to each of these programs appear white. If not, right-click the program name and click **Run all from My Computer**:

Microsoft Office Excel
Office Shared Features
Office Tools

Click **Continue** and continue the installation as instructed.

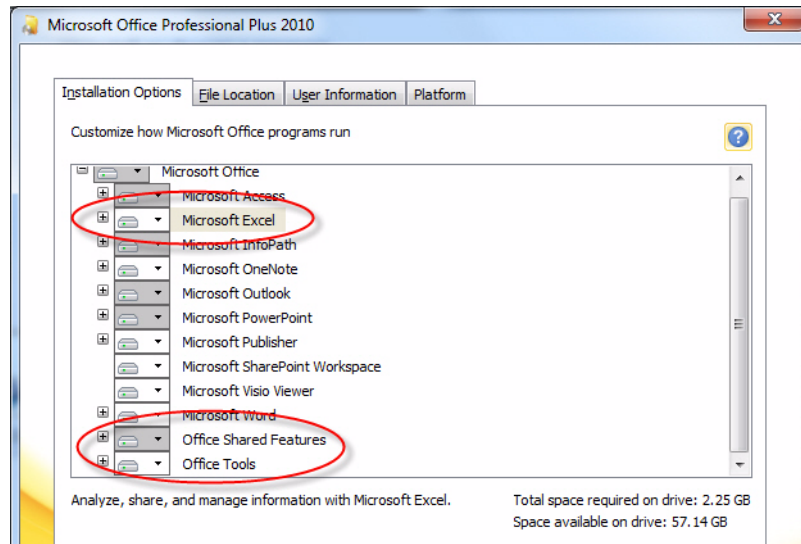


Figure 2 Microsoft Office installation options. For Excel, you will see only Microsoft Office Excel, Office Shared Features and Office Tools.

- 5 When you are prompted to get updates, click **Go to Office Online**. Follow the instructions to update Excel or Office.

For Windows XP, make sure Service Pack 2 is installed for optimal performance of MassHunter reporting.



Figure 3 Click the **Go to Office Online** button to update Excel.

- 6 Check that Excel security for MassHunter Workstation add-ins is configured:
 - a Open Excel.
 - b Click **File > Options**.
 - c Click **Trust Center** in the navigation pane.
 - d Click **Trust Center Settings**. See [Figure 4](#).

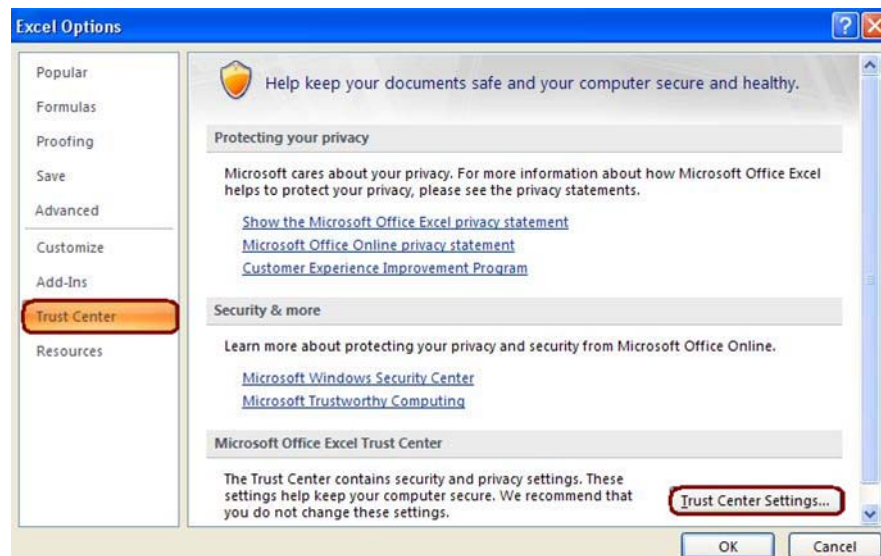


Figure 4 Excel Options window

Step 4. Install and configure Excel

- e Make sure that the **Trust access to the VBA project object model** check box is marked.

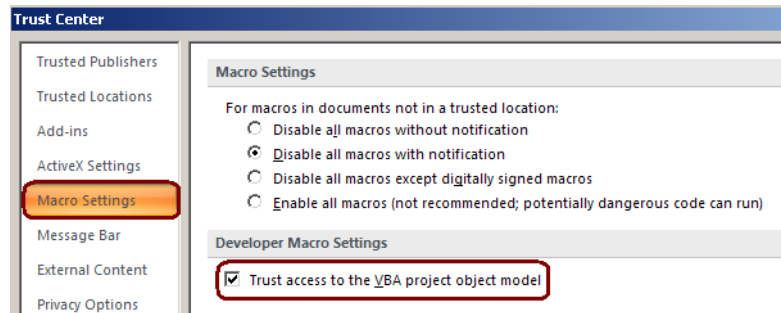


Figure 5 Mark the **Trust access to the VBA project object model** check box.

- f Click **OK** in the Trust Center window.
- g Click **OK** in the Excel Options window.

Step 5. Install Quantitative Compliance program

Do this procedure if you need to enable compliance for the Quantitative Analysis program.

1 Open the folder **SetupCompliance** on the Quantitative Analysis installation disc.

2 Double-click **setup_quantcompliance.exe**.

If the operating system is Windows 7, right-click **setup_quantcompliance.exe** and select **Run as administrator**.

3 Select desired language and click **OK**.

4 In the License Agreement section, click **I accept the terms of the license agreement**, and then click **Next**.

5 Click **Install**.

6 Click **Finish** when install is complete.

Step 6. Install Quantitative Reports

Do this procedure only if you need to upgrade your Quantitative Analysis Reporting program.

- 1 Verify that no other program is running on your system. Installation of the Quantitative Analysis Reporting program will fail if Windows Update is running, even in the background.
- 2 From the root directory of the installation disc, right-click **setup_quantreport.exe**, and then select **Run as administrator**.
- 3 Select desired language from the drop-down menu and click **OK**.
- 4 In the **Welcome to the InstallShield Wizard** window, click **Next** to continue with the installation.
- 5 In the **License Agreement** window, mark the **I accept the terms of the license agreement**, and then click **Next**.
- 6 If needed, in the Destination Folder window, click **Change** to change the default destination location for the report templates. The default is **D:\MassHunter\Report Templates\Quant**.
- 7 Click **Next** to continue.
- 8 When the **Ready to Install the Program** window appears, click **Install** to begin. When the installation begins, the Installing Agilent MassHunter Workstation Quantitative Analysis Reporting window appears.
- 9 When the InstallShield Wizard Completed message is displayed, click **Finish**. If you plan to use a PCL6 printer, download the print driver patch from <http://support.microsoft.com/kb/935843>. This patch is needed to correctly print reports in A4 format to HP PCL6 printers.
- 10 Set the Microsoft XPS Document Writer as the default printer:
 - a Click **Start > Devices and Printers**.
 - b Right-click **Microsoft XPS Document Writer** and click **Set as Default Printer**.

The Microsoft XPS Document Writer formats the Excel workbooks three to four times faster for networked printers because the formatting page set-up information is stored on the local computer. The report is processed by the Microsoft XPS Document Writer, but it is actually printed on the printer selected in the MassHunter program.

CAUTION

If you do not set up a default printer, such as the Microsoft XPS Document Writer Printer, reporting can fail.

Step 7. Check Excel for MassHunter Reporting Add-Ins

- 1 Close all MassHunter Workstation programs.
- 2 Start Excel. If you are warned that Excel is unable to find a MassHunter Add-In, click **OK**.
- 3 Open the **Add-Ins** dialog box. See [Figure 6](#).

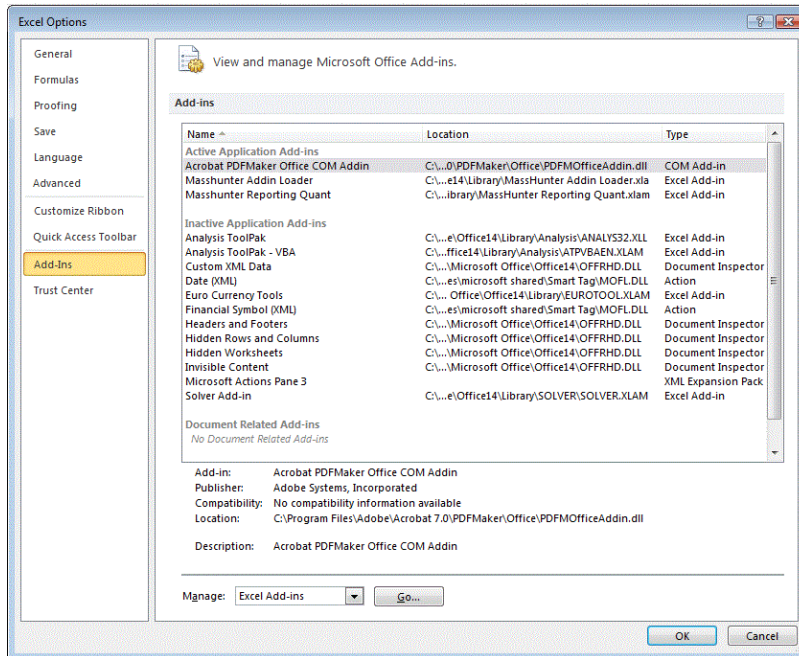



Figure 6 Excel Options Add-Ins window

- 4 In Excel 2007, click the Microsoft Office button , and then click **Excel Options**.
- 5 In Excel 2010, click **File > Options**.
- 6 From the navigation pane, click **Add-Ins**.
- 7 Click the **Go** button next to the **Manage** drop-down list.
- 8 Verify that check boxes are marked for all add-ins that begin with **Masshunter**, and then click **OK**. See [Figure 7](#).

Step 7. Check Excel for MassHunter Reporting Add-Ins

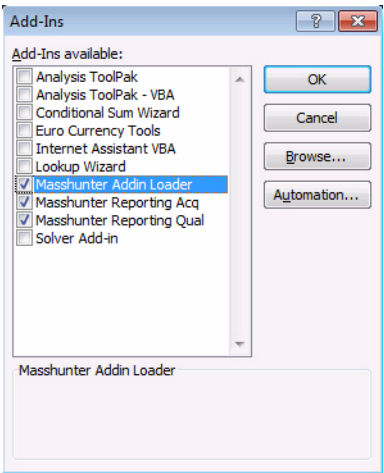


Figure 7 All MassHunter add-in check boxes marked

Step 8. Install the DA Reprocessor - Offline Utilities (LC/MS only)

Do this procedure only if you want to reprocess LC/MS data on this computer.

The Offline Utilities disc contains the DA Reprocessor program. The DA Reprocessor program lets you reprocess one or more data files by running a worklist which starts the Qualitative Analysis program for each file and method in the worklist.

- 1 Insert the MassHunter Acquisition Offline Utilities disc into the disc drive.
- 2 Double-click **Setup.msi**.
- 3 In the License Agreement page, click **I accept the terms of the license agreement**, and then click **Next**.
- 4 In the Choose Destination Location page, click **Next** to accept the default destination location.

The default is

C:\Program Files (x86)\Agilent\MassHunter\Workstation\Acquisition Offline\.

- 5 When the Installation Complete message is displayed, click **Finish**.

Refer to the Data Acquisition online Help for more information on running the DA Reprocessor program.

In This Book

This book contains installation instructions to install or upgrade an offline copy of the Agilent MassHunter Workstation Software.

Microsoft®, Windows Vista®, Windows 7®, and Excel® are registered trademarks of Microsoft Corporation in the US and/or other countries.

© Agilent Technologies, Inc. 2011

Revision A, December 2011



G3335-90122



Agilent Technologies