

Agilent MassHunter Workstation Software for Triple Quad LC/MS

Upgrade Guide

- Step 1. Prepare for installation [2](#)
- Step 2. Install the Acquisition program (includes Optimizer and Study Manager) [3](#)
- Step 3. Install the Qualitative Analysis program [6](#)
- Step 4. Install the Quantitative Analysis program [6](#)
- Step 5. Install and configure Excel [6](#)
- Step 6. Install Service Packs for Data Acquisition [7](#)
- Step 7. Install Compliance programs [7](#)
- Step 8. Install Quantitative Analysis Reports [8](#)
- Step 9. Check Excel for MassHunter Reporting Add-Ins [8](#)
- Step 10. Confirm and update the LC firmware [9](#)
- Step 11. Finish the installation [10](#)
- Step 12. Configure the instrument [11](#)

Use this guide to upgrade an online MassHunter Workstation system.

CAUTION

MassHunter and Excel software must be installed and set up in the order described in this guide, or the printing of reports can fail.



Agilent Technologies

Step 1. Prepare for installation

- 1 If this installation is an upgrade, use the **Add or Remove Programs** command in Control Panel to remove programs that you will be upgrading. *Do not remove programs for which you need only to install a service pack.*
 - Excel, if you need to upgrade (refer to “[Step 5. Install and configure Excel](#)” on page 6 for supported versions of Excel)
 - Agilent MassHunter Workstation Qualitative Analysis
 - Agilent MassHunter Workstation Quantitative Analysis
 - Agilent MassHunter Workstation Quantitative Analysis Reporting

NOTE

Remove only the programs that you plan to upgrade at this time. Do not remove the Agilent MassHunter Workstation Data Acquisition or the MassHunter Optimizer program at this time.

- 2 *Optional.* Back up the data, method and worklist files in the **D:\MassHunter** folder. Use the back-up method of your choice.

The uninstallation program keeps your data, method and worklist files. It also backs up your tuning and hardware setting files, which are restored during installation. Do not move, remove or rename the D:\MassHunter folder, or your tuning and hardware settings will not be saved.

- 3 Run Windows Update to make sure you have the latest critical updates and security fixes.

Make sure Windows Update is completed before you continue.

CAUTION

If you do not run Windows Update, your system may be vulnerable to security problems. Confirm that the LAN power management has not been reactivated by a Windows Update program.

Step 2. Install the Acquisition program (includes Optimizer and Study Manager)

If this is an upgrade from the same revision, such as from B.03.01 to B.03.01 SP1, continue at “[Step 3. Install the Qualitative Analysis program](#)” on page 6.

The installation of the Data Acquisition program includes installation of Optimizer and Study Manager. Do not separately install these programs.

- 1 Check that no other program is running on your system, including Windows Update.
- 2 Put the Data Acquisition installation disk into the disk drive.

The welcome screen appears. See [Figure 1](#).

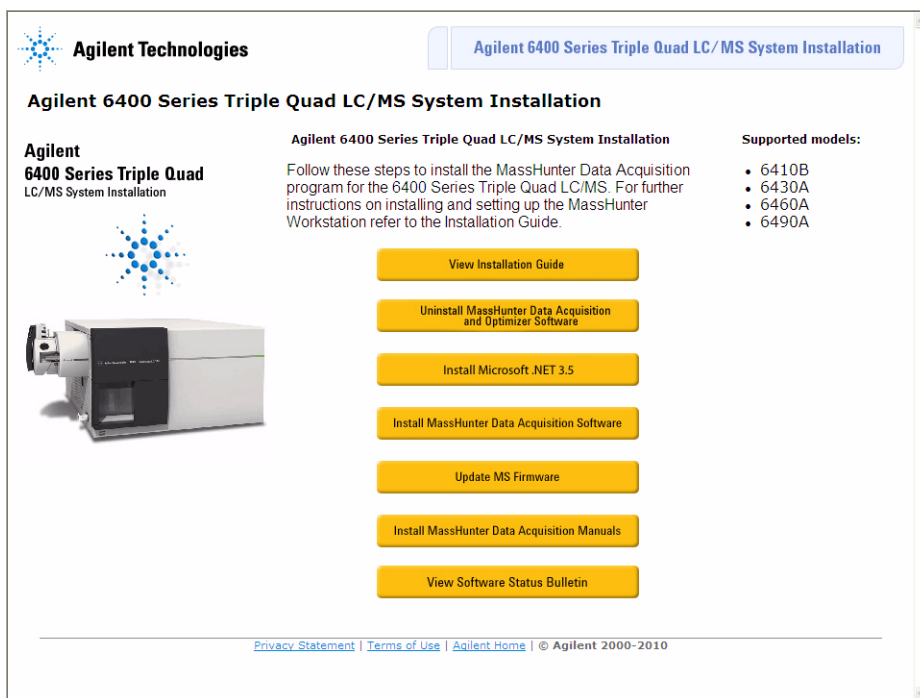


Figure 1 Installation Welcome Screen

- 3 Click **Uninstall MassHunter Data Acquisition and Optimizer Software**, then follow the instructions on the screen to remove the current program.

Step 2. Install the Acquisition program (includes Optimizer and Study Manager)

- 4 Click **Install MassHunter Data Acquisition Software**, then follow the instructions on the screen to install the software.
 - In the License Agreement screen, click **I accept the terms of the license agreement**, then click **Next**.
 - In the Choose Destination Location screen, click **Next** to accept the default destination location.

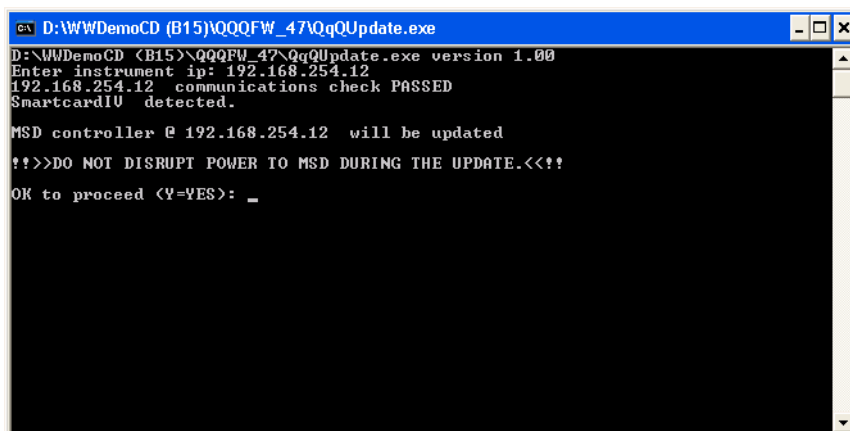
The default is **C:\Program Files\Agilent\MassHunter\Workstation\Acq.**
 - In the Start Copying Files screen, review the settings then click **Next**.

The Setup Status screen now appears.
 - If you get a message that indicates that the screen resolution is *not* set to the required 1280 x 1024 resolution, click **OK**.

The best resolution for MassHunter is either 1600 x 1200 (for 4 x 3 aspect ratio) or 1920 x 1080 (for 16 x 9).
 - If you see a Notepad window that prompts you to install other options, close the Notepad window.
 - When the InstallShield Wizard Complete message is displayed, click **Finish**.
- 5 Click **Install Microsoft .NET 3.5** and follow the instructions, if any, to install Microsoft .NET Framework 3.5.

Step 2. Install the Acquisition program (includes Optimizer and Study Manager)

- 6 If this installation is a software-only upgrade:
 - a Click **Upgrade MS Firmware**.
 - b Press **Enter** to accept the default IP address for the Triple Quad instrument (192.168.254.12).
 - c When prompted, type **Y** for yes to proceed with update.



```
D:\WWWDemoCD (B15)\QQQFW_47\QqQUupdate.exe
D:\WWWDemoCD (B15)\QQQFW_47\QqQUupdate.exe version 1.00
Enter instrument ip: 192.168.254.12
192.168.254.12 communications check PASSED
SmartcardI/O detected.
MSD controller @ 192.168.254.12 will be updated
!!>>DO NOT DISRUPT POWER TO MSD DURING THE UPDATE.<<!!
OK to proceed (Y=YES): _
```

- 7 *Optional.* Click **Install MassHunter Data Acquisition Manuals** to copy the user guides to the location of your choice.

The installation program automatically copies the MassHunter user guides onto your computer so that they can be opened from online Help. The user guides are also available on the installation disk in the Manuals folder. Click this button only if you want an additional set of user guides copied to the location of your choice.

Step 3. Install the Qualitative Analysis program

Do this step only if you are upgrading the Qualitative Analysis program at this time.

- Refer to the *Offline Qualitative and Quantitative Analysis Installation Guide* to install the Qualitative Analysis program.

Do not install any other MassHunter program until instructed to do so.

Step 4. Install the Quantitative Analysis program

Do this step only if you are upgrading the Quantitative Analysis program at this time.

- Refer to the *Offline Qualitative and Quantitative Analysis Installation Guide* to install the Quantitative Analysis program.

Do not install any other MassHunter program until instructed to do so.

Step 5. Install and configure Excel

Do this step only if you need to upgrade Excel.

The MassHunter Data Acquisition program supports:

- 64-bit Windows 7 Pro: Excel 2010 or Office 2010
- 32-bit Windows XP SP2/3: Excel 2007+SP2, Office 2007, Excel 2010 or Office 2010
- Refer to the *Offline Qualitative and Quantitative Analysis Installation Guide* to install and configure Excel.

Do not install any other MassHunter program until instructed to do so.

Step 6. Install Service Packs for Data Acquisition

- 1 Put the Data Acquisition installation disk into the disk drive.
If you received a separate Service Pack installation disk, insert that disk instead.
- 2 If the folder **Service Packs** exists on the installation disk, then:
 - a Open the **Service Packs** folder. If the folder contains another folder, such as **SP2**, open that folder.
 - b Locate the installation file, which ends with **SP x.exe**.
 - c For Windows 7, right-click the installation file and select **Run as administrator**.
 - d For all other operating systems, double-click the installation file.
 - e Follow the instructions to install the service pack.

Step 7. Install Compliance programs

Do these steps if you need to enable compliance. You must install the MassHunter Data Acquisition program before you install the MassHunter Quantitative Analysis Compliance program.

- 1 Install the Quantitative Compliance program:
Refer to the *Offline Qualitative and Quantitative Analysis Installation Guide* to install the Quantitative Compliance program.
- 2 Enable Compliance for the Data Acquisition program.
Refer to the *MassHunter Data Acquisition Compliance Software Quick Start Guide* for details.

The compliance programs are installed and enabled.

Step 8. Install Quantitative Analysis Reports

Do this step only if you need to upgrade Quantitative Analysis Reporting.

- Refer to the *Offline Qualitative and Quantitative Analysis Installation Guide* to install the Quantitative Analysis program.

Do not install any other MassHunter program until instructed to do so.

Step 9. Check Excel for MassHunter Reporting Add-Ins

- Refer to the *Offline Qualitative and Quantitative Analysis Installation Guide* to make sure the MassHunter Reporting Add-Ins are properly installed.

Step 10. Confirm and update the LC firmware

- 1 Start the Data Acquisition program.
- 2 Click **File > Print > Instrument Configuration**.
- 3 Go to <http://www.chem.agilent.com/en-US/Support/Downloads/firmware/Pages/LC.aspx> and check that you have the most recent firmware for your instrument.
- 4 If you need to update your LC firmware, follow the instructions on the web site. Make sure you use the latest firmware update tool, as instructed on the web site.
- 5 Check that the firmware for the G1369A Agilent LAN Interface card is the latest version available:
 - a Start a Command Prompt in Windows.
 - b Type `telnet 192.168.254.11` in the Command Prompt window and press **Enter**.
 - c Type `/` in the Telnet window.

The LAN Interface card displays its current configuration information.

The LAN Interface card requires 1.10 firmware or higher. If an upgrade is needed, please contact your Agilent representative.

Step 11. Finish the installation

- 1 Create a system recovery disk of your installed system.

Follow the instructions for the Backup Solution Bundle (G1030-64002) included in the Agilent MassHunter Workstation Software - Upgrade kit.

- 2 Install or enable any other program that you will use with your MassHunter workstation. Refer the installation guide or quick start guide for these programs.
- 3 Make sure that the trust settings in Excel are set for all MassHunter users, including the guest account that is set up for compliance. See [step 6](#) of “[Step 5. Install and configure Excel](#)”.
- 4 Install the programs that are part of the Agilent Software Backup Solution and do a system back-up of the computer.

Refer to the *H1172A Backup Solution Installation and User Guide* and the *Agilent Software Backup Solution Hardware and Software Installation Checklist* for details.

- 5 Install or enable any other program that you will use with your MassHunter Workstation, such as MassHunter Optimizer or Compliance. Refer to the installation guide or quick start guide for these programs.

Step 12. Configure the instrument

In this step, you configure the Triple Quad instrument and the 1100/1200 LC.

- 1 Open the **Agilent MassHunter** folder on the desktop, then double-click **Acq Tools**.
- 2 Double-click the **Instrument Configuration** tool.
- 3 In the Instrument Configuration dialog box:
 - a If you want to change the name of the instrument, type a new name for **Instrument Name**.
 - b Click **Agilent 6400 Series Triple Quadrupole**.
 - c Mark the **Agilent 1100/1200/1290 System Access** check box.
 - d Click **Configure**.

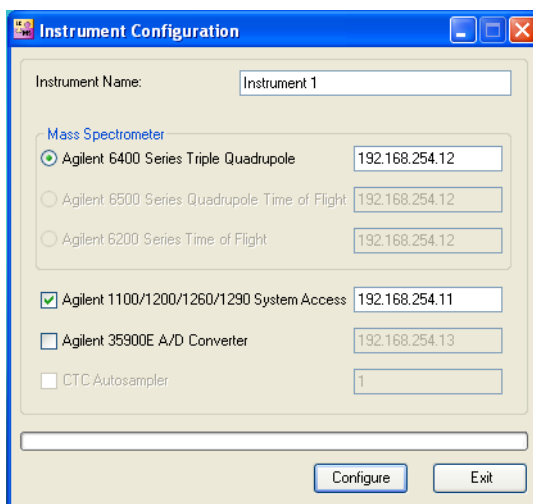


Figure 2 Instrument Configuration Dialog Box

- 4 When configuration is completed, click **OK**.

In This Book

This book contains
installation instructions to
upgrade Agilent MassHunter
Workstation for
Triple-Quadrupole LC/MS
Systems.

Microsoft®, Windows 7®, and
Excel® are registered
trademarks of Microsoft
Corporation in the US and/or
other countries.

© Agilent Technologies, Inc. 2011

Revision A, July 2011



G3335-90114



Agilent Technologies