



Agilent Instrument Control Framework

Infinitely better instrument control



The Measure of Confidence



Agilent Technologies

INFINITELY BETTER INSTRUMENT CONTROL

Agilent Instrument Control Framework (ICF) facilitates comprehensive and straightforward control of your Agilent LC instruments and modules regardless of the chromatography data system you deploy in your laboratory.

Better control of your Agilent LC equipment

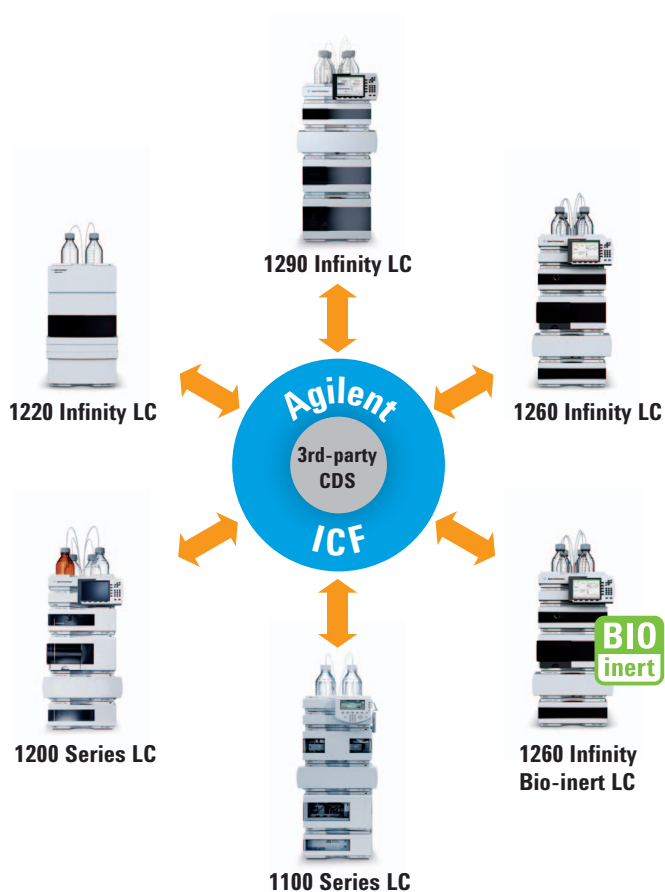
Agilent ICF ensures your Agilent LC instrumentation runs smoother than ever before when controlled through 3rd-party chromatography data systems (CDS) such as Waters Empower or Dionex Chromeleon.

- ICF gives you access to advanced features of Agilent LC instrumentation for more comprehensive control
- ICF is user friendly with the same look-and-feel in any 3rd-party chromatography data system
- ICF is easy to use and you are just one click away from information such as instrument configuration or system status

Easy to implement and maintain

Agilent ICF makes it easy for any CDS provider to implement control of Agilent LC instrumentation through their data system, eliminating much of the effort and delay previously associated with instrument control.

- No need to write native instrument control drivers
- No need for extensive, time-consuming and costly test cycles
- No need for indepth knowledge of hardware or firmware



Chromatography Data System

Waters Empower 2
Waters Empower 3
Dionex Chromeleon 6.8
Dionex Chromeleon 7.1
Bruker Daltonics Compass
Bruker Daltonics HyStar

Agilent
ICF
Instrument
Control
Framework*

Agilent LC Equipment

Agilent 1100 Series
Agilent 1200 Series
Agilent 1200 Infinity Series

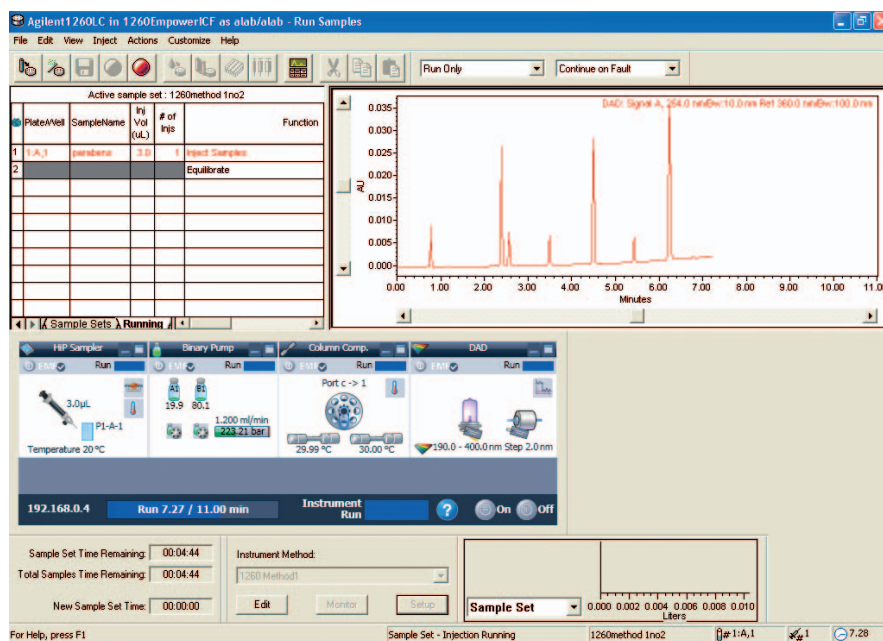
- Agilent 1220 Infinity LC
- Agilent 1260 Infinity LC
- Agilent 1290 Infinity LC

Agilent's Instrument Control Framework facilitates operation of Agilent 1200 Infinity LC Series, 1200 Series and 1100 Series through all of the most popular chromatography data systems. *Please note that Waters refers to Agilent ICF as Agilent Infinity LC ICS.

More comprehensive instrument control

Agilent ICF gives you access to advanced features of Agilent LC instrumentation that were previously not supported through 3rd-party data systems.

- Full control of Agilent LC instrumentation through all of the most popular chromatography data systems
- Comprehensive user interface that seamlessly incorporates all instrument features, including system status, instrumentation configuration and method editing
- Access to valuable Agilent features such as external needle wash, overlapped injection, or automated delay volume reduction
- Control of new Agilent modules or system as soon as they become available



Using ICF, Agilent instrument features are easily available through a user interface that is integrated in your 3rd-party CDS such as Waters Empower.

TECHNICAL BACKGROUND

Agilent Instrument Control Framework is a software component that enables full control of Agilent LC systems in 3rd-party chromatography data systems and workstations.

Provided to CDS software developers, ICF eliminates much of the effort and delay of using low-level instrument control codes to write individual native drivers for Agilent hardware. Agilent ICF is based on new standard RC.net instrument drivers.

Agilent provides ICF free of charge. ICF is distributed through 3rd-party CDS providers.

For more information, visit www.agilent.com/chem/icf or contact your Agilent sales representative.

Learn more

www.agilent.com/chem/icf

Find an Agilent customer center

www.agilent.com/chem/contactus

USA and Canada

1-800-227-9770

agilent_inquiries@agilent.com

Europe

info_agilent@agilent.com

Asia Pacific

inquiry_lsca@agilent.com

This information is subject to change without notice.

© Agilent Technologies, Inc. 2012

Published in the USA, April 1, 2012

5991-0067EN

Related Literature	Pub. No.
The Agilent Technologies Instrument Control Framework – Technical Overview	5990-6504EN
Using the Agilent Instrument Control Framework to control the Agilent 1220 Infinity LC through Waters Empower software	5990-9399EN
Using the Agilent Instrument Control Framework to control the Agilent 1260 Infinity LC through Waters Empower software	5990-9092EN
Using the Agilent Instrument Control Framework to control the Agilent 1290 Infinity LC through Waters Empower software	5990-9093EN
Using the Agilent Instrument Control Framework to control the Agilent 1260 Infinity Bio-inert Quaternary LC through Waters Empower software	5990-9354EN
Operating the Agilent 1260 Infinity LC with Dionex Chromeleon software using Instrument Control Framework	5990-7232EN
Operating the Agilent 1290 Infinity LC with Dionex Chromeleon software using Instrument Control Framework	5990-7215EN



Agilent Technologies