

## Agilent G6600-60617

### Upgrade Kit

**Table 1** Upgrade kit supplies

Description	Quantity
Screw, T20, M4x8mm	1
Clamp-cable 1/4-in diameter, .375-WD STL	1
Screw-MACH 4-40 1/2-in pan head, Pozidriv	3
Screw 4-40, 6 1/4-in, pan head, Pozidriv	3
Nutwarmer Kit	1
Insulation, XCD Base Burner for 7890	1
Heater block insulation pad	3
Mounting plate, DP burner	1
Insulation reflector pad	2
Instructions	1



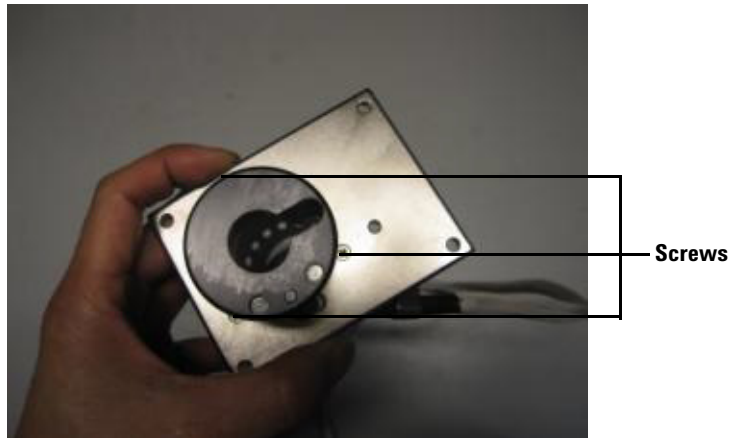
## Steps Of The Process

### Disassembling the existing burner mount

- 1 Use a Phillips screwdriver to remove the screw from the cable clamp.



- 2** Use a Phillips screwdriver to remove the three screws and remove the slotted cover as shown in the figures below.



- 3** Use a Phillips screwdriver to remove the three screws that attach the burner to the mounting plate.



- 4 Remove the heater and sensor elements on the heater sensor assembly (G6600-60614) through the hole in the mounting plate as shown in the figures below.

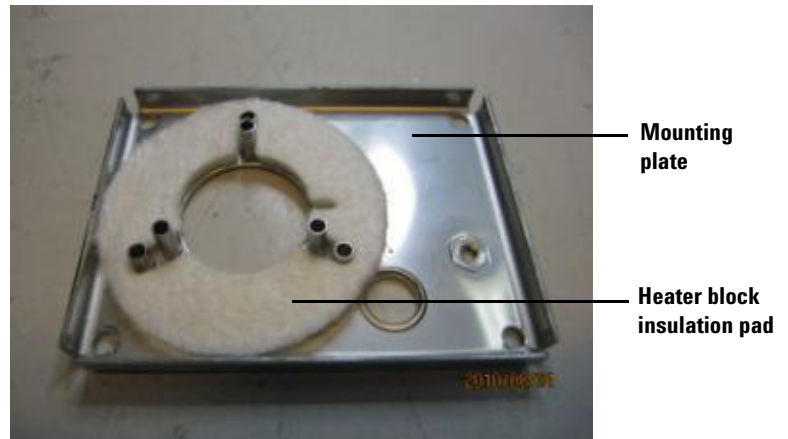


- 5 Use a 1/4-in open end wrench to remove three standoffs on burner mount.



## Reassembly

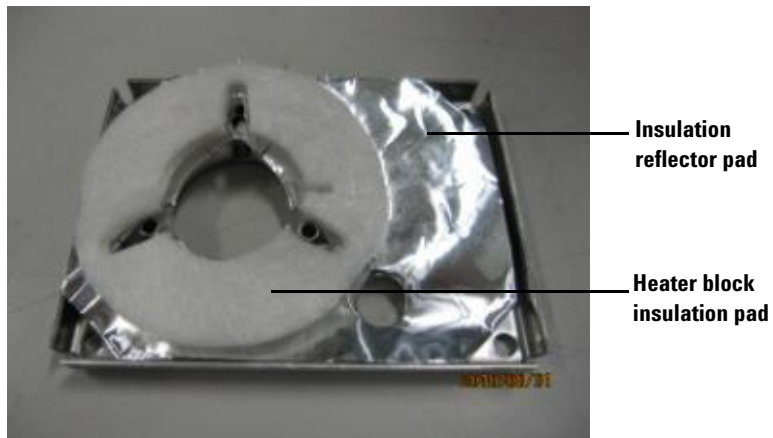
- 1 Place a heater block insulation pad, from the kit on the mounting plate from the kit as shown.



- 2 Place an insulation reflector pad from the kit over the heater block insulation pad.



- 3** Place another heater block insulation pad from the kit on the insulation reflector pad.



- 4** Place another insulation reflector pad from the kit over the second heater block insulation pad.



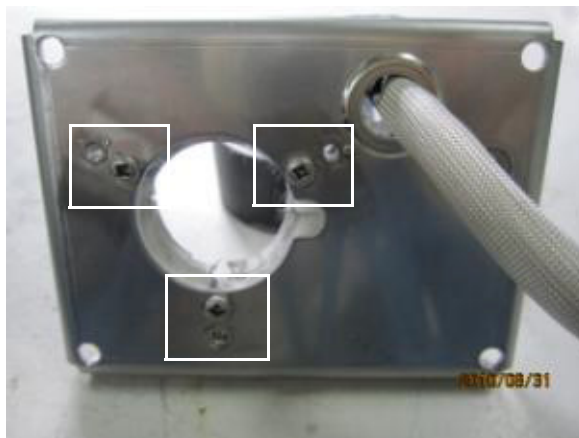
- 5 Feed the heater and sensor elements assembly previously removed from the old mounting plate through the access hole in the new mounting plate.



- 6 Place heater cartridges and thermistor into the holes as shown and push them all the way in the burner mount.



- 7** Feed the three 6 1/4-in pan head Pozidriv screws through the three holes closest to the center hold on the mounting plate.



- 8** Attach the mounting plate to the burner mount, the three screws should align with the three holes on the burner mount.

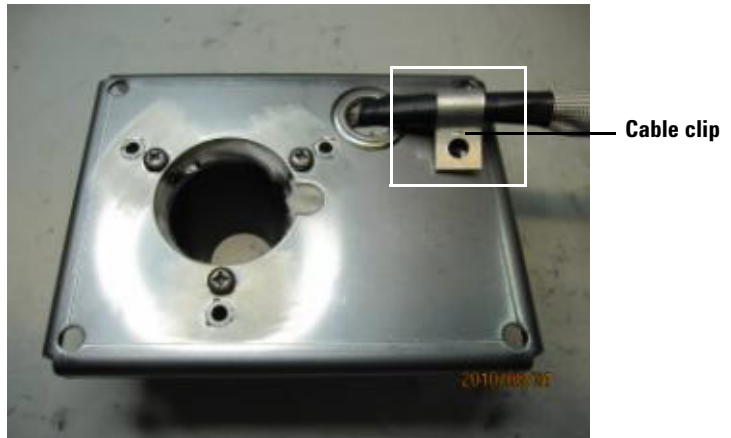




- 9** Use a Pozidriv screwdriver to tighten the three screws for fixing the mounting plate and the burner mount.



- 10** Slip the cable clip from the kit onto the shrink covering on the heater sensor assembly.



- 11** Use a T20 Torx driver and a M4x8mm Torx screw from the kit to secure the cable clip.



- 12** Place the burner shroud (MSF 75001) upside down on a flat surface.

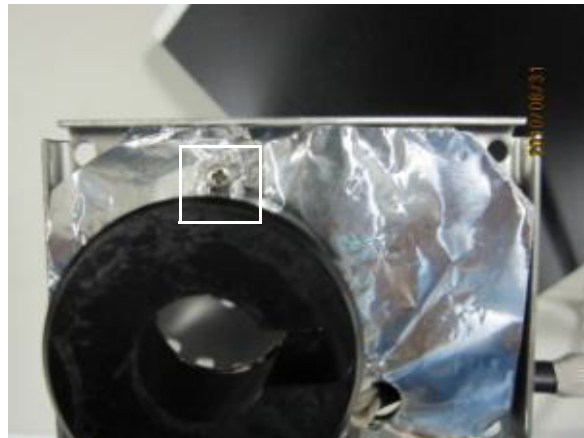
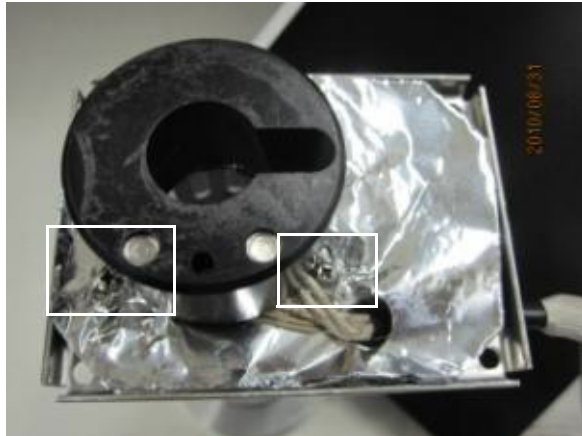


Burner shroud

- 13** Place the mounting plate assembly (from the previous step) on the burner shroud (MSF 75001). Align the slot with the slot in the mounting plate as shown.



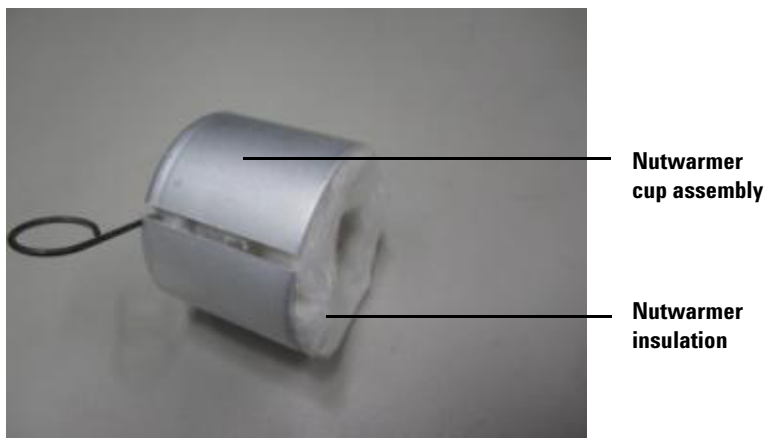
- 14** Use a Pozidriv screwdriver and three 1/2-in Pozidriv screws from the kit to attach the mounting plate to the burner shroud (MSF 75001).



- 15** Install the completed assembly over the burner on the instrument.



- 16** Place three nutwarmer insulation layers in the nutwarmer cup assembly.



- 17** Install the nutwarmer cup assembly on the burner.



## **Warranty**

**The material contained in this document is provided “as is,” and is subject to being changed, without notice, in future editions. Further, to the maximum extent permitted by applicable law, Agilent disclaims all warranties, either express or implied, with regard to this manual and any information contained herein, including but not limited to the implied warranties of merchantability and fitness for a particular purpose. Agilent shall not be liable for errors or for incidental or consequential damages in connection with the furnishing, use, or performance of this document or of any information contained herein. Should Agilent and the user have a separate written agreement with warranty terms covering the material in this document that conflict with these terms, the warranty terms in the separate agreement shall control.**

© Agilent Technologies, Inc. 2011  
Printed in USA  
First edition, March 2011  
Agilent Technologies, Inc.  
5301 Stevens Creek Boulevard  
Santa Clara, CA 95051 USA



G6600-90617