

Agilent G1585A Side Carrier for Manual Inlet Flow Module

6890 Gas Chromatograph

Installation Guide



Agilent Technologies

Notices

© Agilent Technologies, Inc. 2002

No part of this manual may be reproduced in any form or by any means (including electronic storage and retrieval or translation into a foreign language) without prior agreement and written consent from Agilent Technologies, Inc. as governed by United States and international copyright laws.

Manual Part Number

G1585-90307

Edition

First edition, August 2002
Replaces part number G1545-90300
Printed in USA

Agilent Technologies, Inc.
2850 Centerville Road
Wilmington, DE 19808-1610 USA

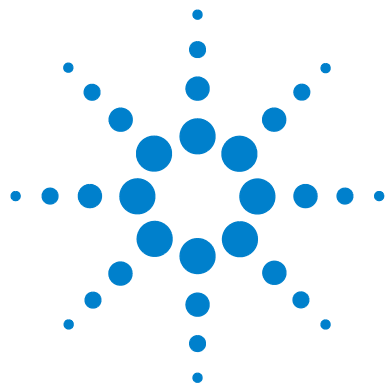
Safety Notices

CAUTION

A **CAUTION** notice denotes a hazard. It calls attention to an operating procedure, practice, or the like that, if not correctly performed or adhered to, could result in damage to the product or loss of important data. Do not proceed beyond a **CAUTION** notice until the indicated conditions are fully understood and met.

WARNING

A **WARNING** notice denotes a hazard. It calls attention to an operating procedure, practice, or the like that, if not correctly performed or adhered to, could result in personal injury or death. Do not proceed beyond a **WARNING** notice until the indicated conditions are fully understood and met.



Installation Guide

This document describes how to install the G1585A Side Carrier for manually controlled inlets onto a 6890 Gas Chromatograph (GC). Before you begin, review the safety information provided in the GC's documentation.

Parts list

Part	Qty.
T-20 Torx machine screws (M4 × 12 mm long)	4
T-20 Torx machine screws (M4 × 25 mm long)	2
Side carrier cover	1
Flow carrier assembly	1
Blank injection port label plates	2
T-20 M4 Flat head machine screws	2

Required tools

- T-20 Torx screwdriver
- 7-mm nut driver (only for inlet module installation)



Prepare the GC

WARNING

Hazardous voltages are present in the mainframe when the GC power cord is plugged in. Avoid a potentially dangerous shock hazard by unplugging the power cord before removing the side panels.

- 1 Turn off the GC and unplug the power cord.

Allow time for all heated zones to cool and then turn off supply gases at their sources.

- 2 Remove the left side cover.
 - a From the back of the GC, loosen the two screws on the right side of the top rear cover two turns. See [Figure 1](#).

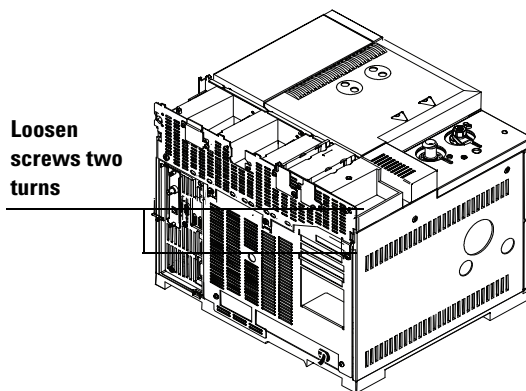


Figure 1 Loosen two back panel screws

- b Loosen the two captive screws on the left side cover, slide the cover to the rear of the GC, then lift it up and off.

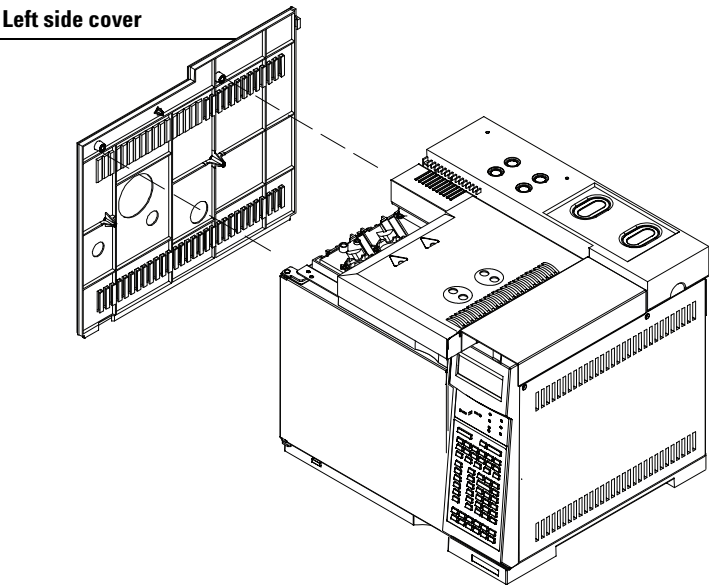


Figure 2 Removing the left side cover

Install the side carrier

- 1 Position the flow carrier assembly on the side of the GC. The bracket on the back on the carrier should rest on the bottom edge of the GC. Attach the flow carrier using the screws called out in [Figure 3](#).

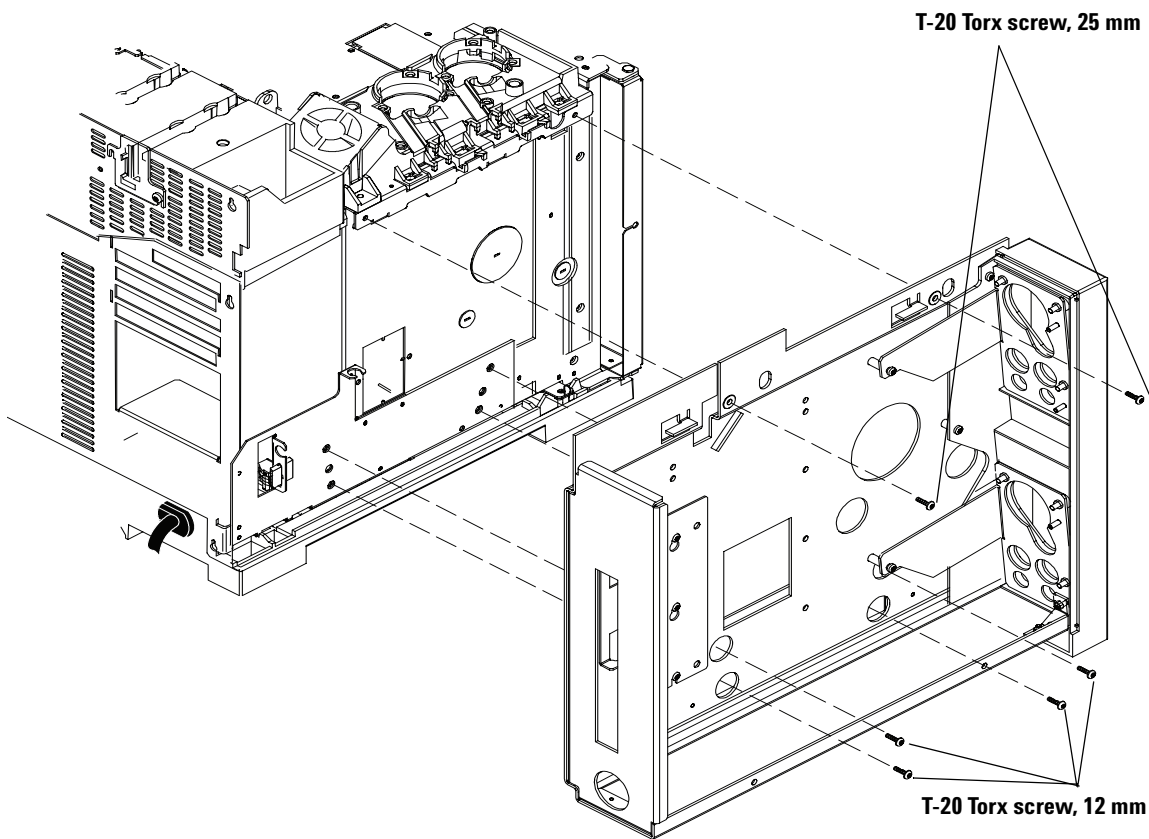


Figure 3 Installing the flow carrier assembly

- 2 To install a flow module, refer to [Figure 4](#) and [Figure 5](#). (See also any documentation provided with the flow module.)

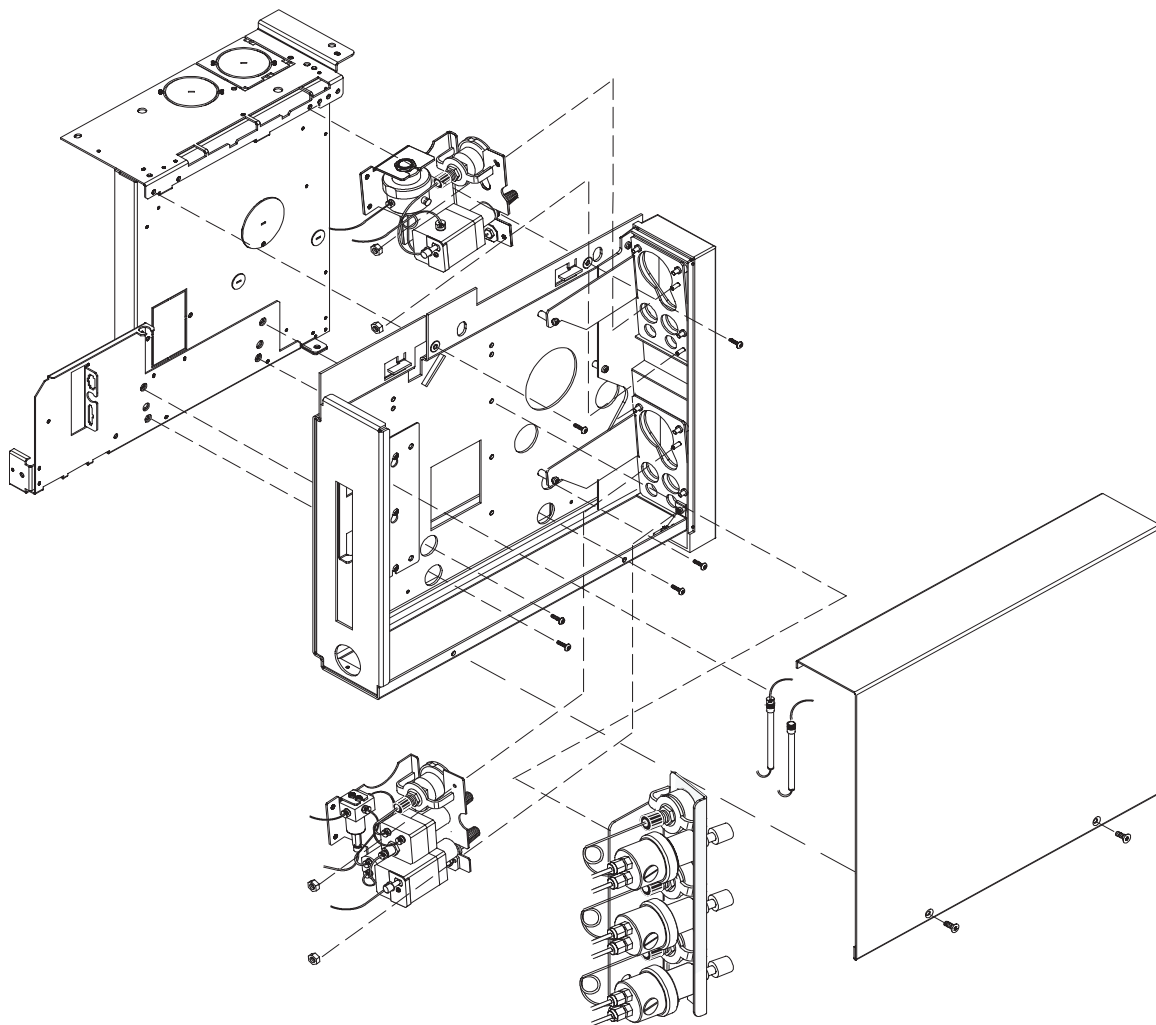


Figure 4 Exploded view of the side carrier assembly

- 3** The illustration below shows a module mounted in the lower position.

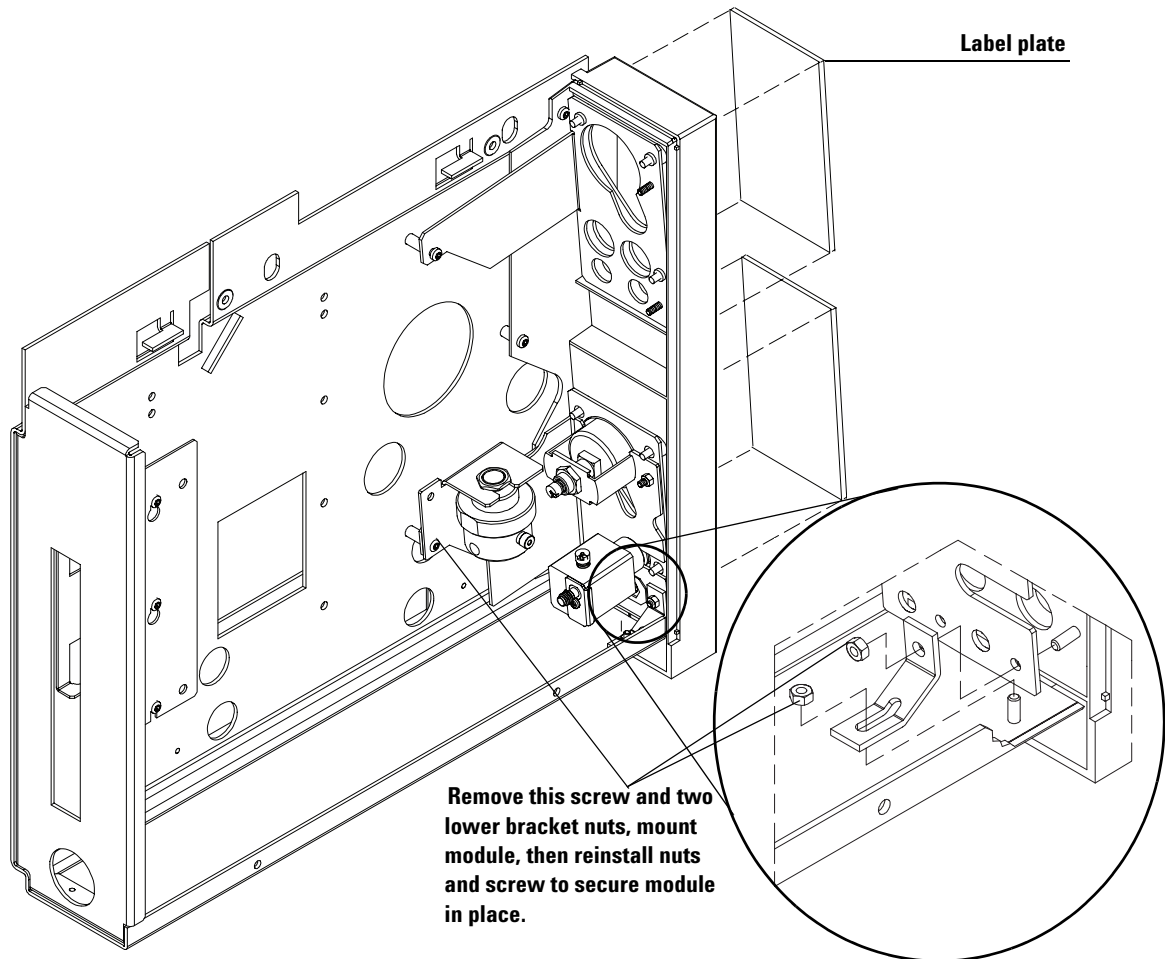


Figure 5 Installing a flow module

- 4 After installing a flow module, remove the paper backing from the proper panel label and glue it on the front of the flow bezel as shown in [Figure 5](#). If you are not installing an inlet in the flow carrier, glue two blank labels onto the front of the flow bezel (see [Figure 5](#)).
- 5 Attach the side carrier cover to the flow carrier assembly as shown in [Figure 6](#).

T-20 Torx screw, flat head

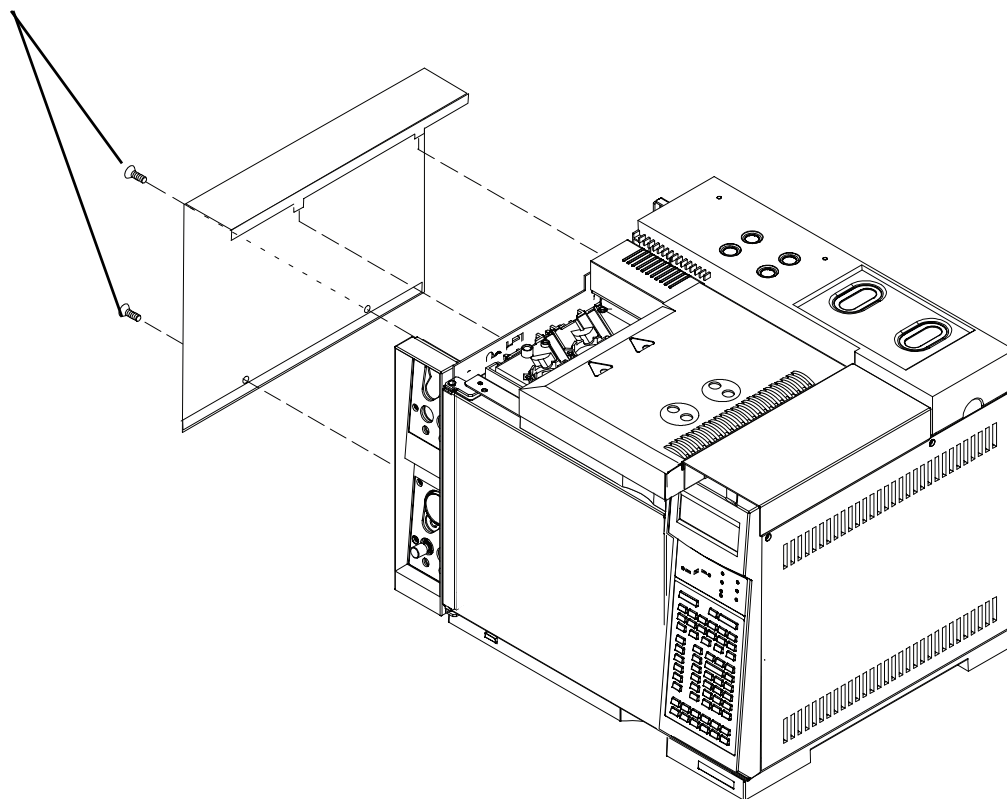


Figure 6 Installing the side carrier cover



Agilent Technologies

Restore the GC to operating condition

- 1** Plug in the power cord.
- 2** Turn on the GC. Restore normal operating conditions.

Agilent Technologies, Inc.
Printed in USA, August 2002



G1585-90307