

EZChrom *Elite* ***Smart Sequence***

...Making Your Sequences Hop, Skip and Jump



Frank Tontala
Product Manager - EZChrom Elite
Lab Informatics

Agenda

- EZChrom Elite Overview
- Problems in the Lab
- What Is Smart Sequence?
- Solutions in the Lab
- Questions



Intro To EZChrom *Elite*



How Does EZChrom *Elite* Address Lab Needs?

An Enterprise-wide Chromatography Data Solution

- Network-access of all instruments
- Integrated instrument control of multiple vendors' HPLC, GC, etc.
- Scalable from single workstation to multi-site Client / Server
- Highly flexible report generation capabilities
- Software features addressing regulated environments
- Integration with LIMS and other software in the lab



The EZChrom Product Line

EZChrom *Elite*

- Client Server
- Workstation (Standalone)
- EZChrom SI

Optional Modules

- Instrument Control Drivers
- DAD (PDA) Processing
- System Suitability (Included with Agilent drivers)
- GPC (SEC)
- QuickLaunch
- Development Toolkits



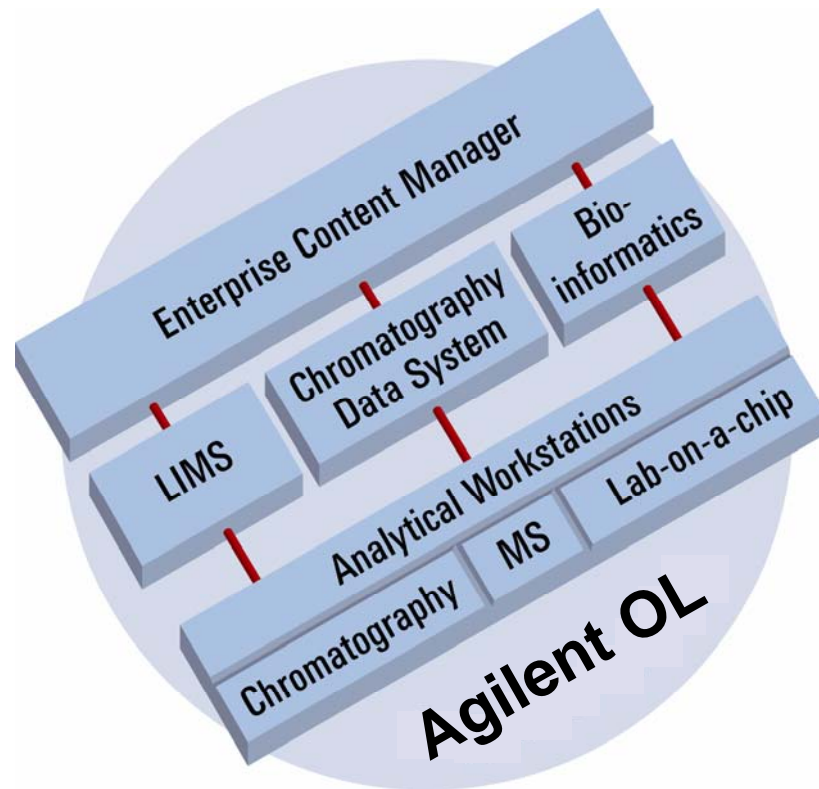
EZChrom *Elite* – A Scalable Part of the LI Family

Features

- Data and Methods generated by EZChrom *Elite* are usable in Agilent OL.
- The UI of the Agilent OL ICM is very similar to EZChrom Elite

Benefit

- Customers have a smooth migration path from single workstation to Client Server to Agilent OL.



Broadest Instrument Support Available

Control of 330+ Chromatographic Components

Vendor	Modules
Agilent	60 (GC, LC, DAD)
Shimadzu	98 (GC, LC, PDA)
Thermo Lab Systems	39 (GC, LC, PDA)
Varian	29 (GC)
Hitachi	21 (LC, PDA)
Plus... Perkin Elmer, Waters, Jasco, CTC, Alltech, Allcott, ESA, GBC, Valco and others	

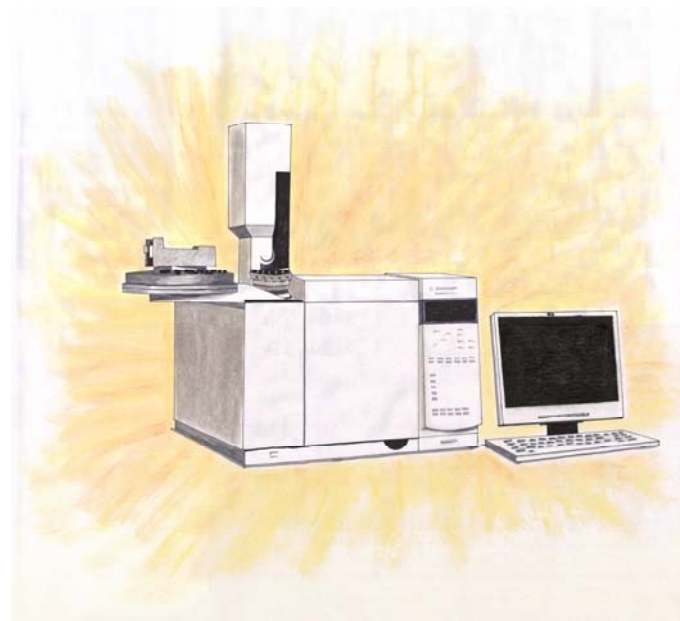
More drivers being continually added...

EZChrom Elite and the 7890 GC

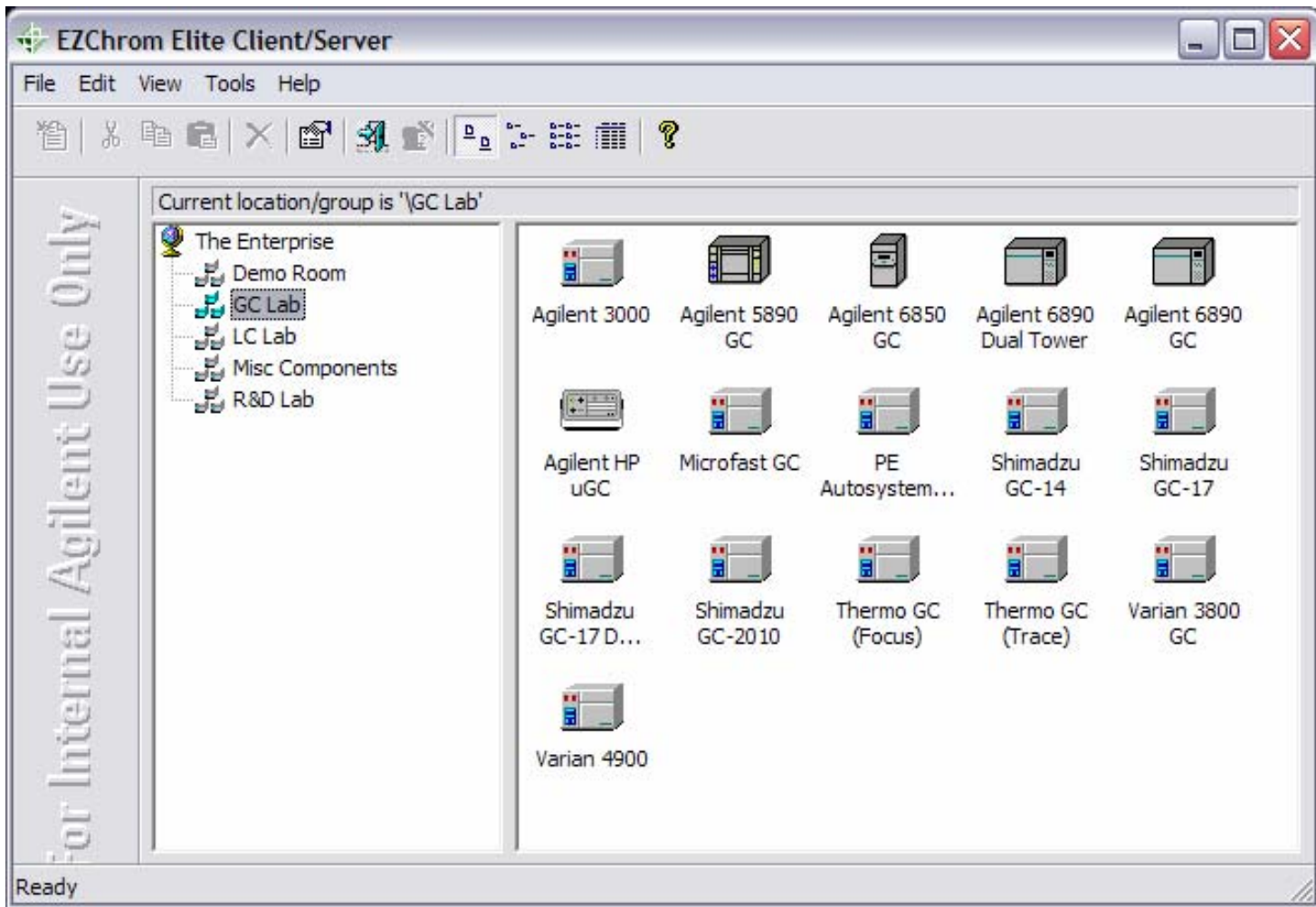
With the introduction of the new 7890 GC, a new version of EZChrom Elite (version 3.2.1) will be released.

This version will feature:

- Full Support for the 7890 GC and associated Autosamplers, using the same driver as ChemStation
- Retention Time Locking (RTL) will be included in the package



Many Instruments - One Enterprise Software



The Problem...

Dumb Sequences



Little Things Bug Me All the Time...

- I just want to perform runs one after the other...
- Let me know as soon as the data is ready!
- The hardware failed just after I left for the weekend!
- Why did it waste my sample when it KNEW the calibration was bad?
- Can't we get the system prep'ed before the shift starts?



Little things lead to BIG losses in productivity !!



The Solution...

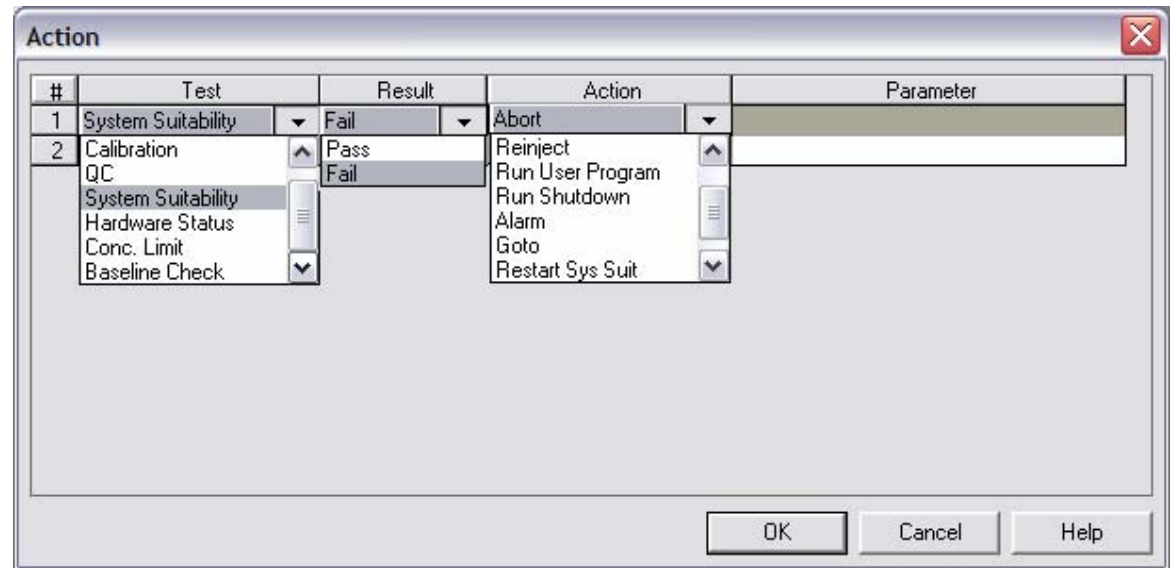
Smart Sequence!



So, What is SmartSequence?

Intelligent Automation

- Calibrations
- Check Standards
- Spikes
- Duplicates
- System Suitability
- Baseline Check



Result Dependant Actions

- Reinject
- Pause / Abort
- Trigger Alarm
- Run External Program
- Pager / E-mail notification

More Tools To Manage Your Sequences

Sequence Types To Control Flow

- Begin Loop / End Loop
- Shutdown Runs
- Baseline Checks

Timer Based Run Queues

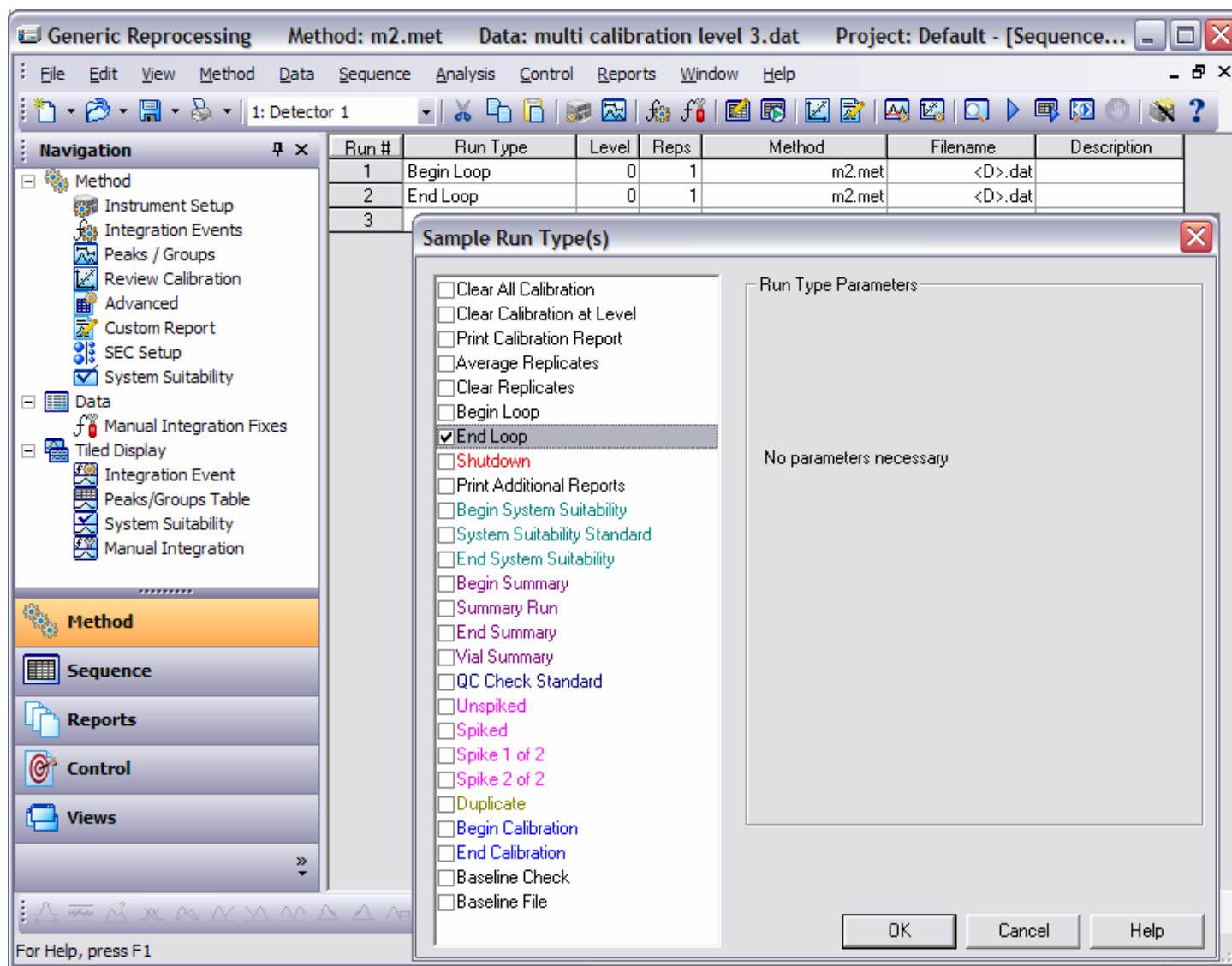
- Wait For a Period Of Time
- Start at a Fixed Time

E-Mail and Pager Notification

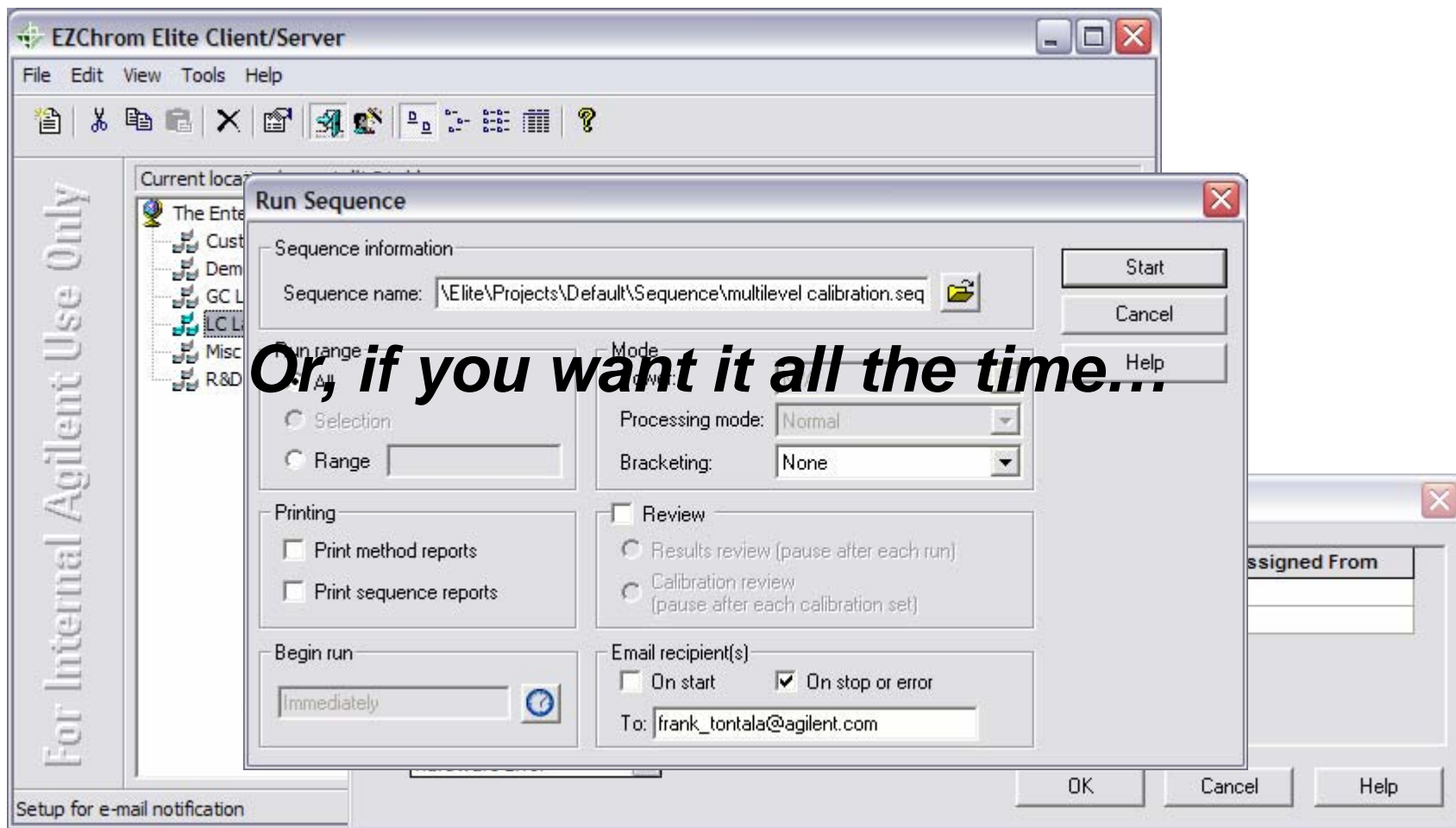
- Based on System Events



I Just Want to Perform Runs, One after the Other ...

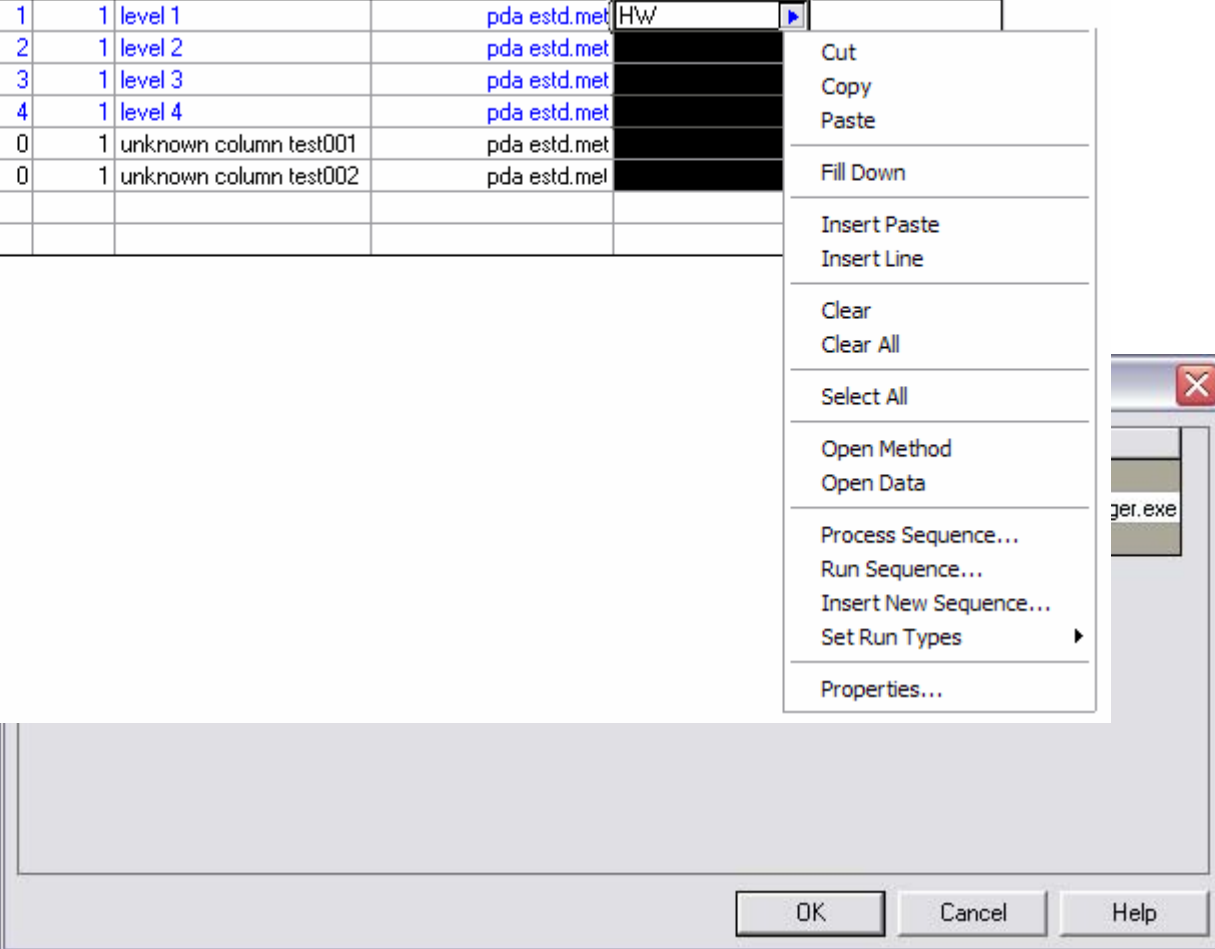


Let Me Know As Soon As the Data Is Ready!



The Hardware Failed Just After I Left For the Weekend!

Run #	Run Type	Level	Reps	Sample ID	Method	Action	Description
1	Calibration	1	1	level 1	pda estd.met	HW	
2	Calibration	2	1	level 2	pda estd.met		
3	Calibration	3	1	level 3	pda estd.met		
4	Calibration	4	1	level 4	pda estd.met		
5	Unknown	0	1	unknown column test001	pda estd.met		
6	Unknown	0	1	unknown column test002	pda estd.met		
7							
8							



The screenshot shows a software window with a table of runs and a context menu. The table has columns for Run #, Run Type, Level, Reps, Sample ID, Method, Action, and Description. The first four rows are calibration runs at levels 1, 2, 3, and 4. The next two rows are unknown runs. The last two rows are empty. A context menu is open over the 'Action' column, showing options like Cut, Copy, Paste, Fill Down, Insert Paste, Insert Line, Clear, Clear All, Select All, Open Method, Open Data, Process Sequence..., Run Sequence..., Insert New Sequence..., Set Run Types, and Properties... The 'Set Run Types' option has a right-pointing arrow. The software window has an 'OK' button, a 'Cancel' button, and a 'Help' button. A small window titled 'ger.exe' is visible in the background.

Why Did It Waste My Sample When It KNEW the Calibration Was Bad?

Run #	Run Type	Level	Reps	Sample ID	Method	Action	Description
1	Calibration	1	1	level 1	pda estd.met		
2	Calibration	2	1	level 2	pda estd.met		
3	Calibration	3	1	level 3	pda estd.met		
4	Calibration	4	1	level 4	pda estd.met		
5	Unknown	0	1	unknown column test001	pda estd.met		
6	Unknown	0	1	unknown column test002	pda estd.met		
7	Shutdown			None	lc shutdown		
8							

Action

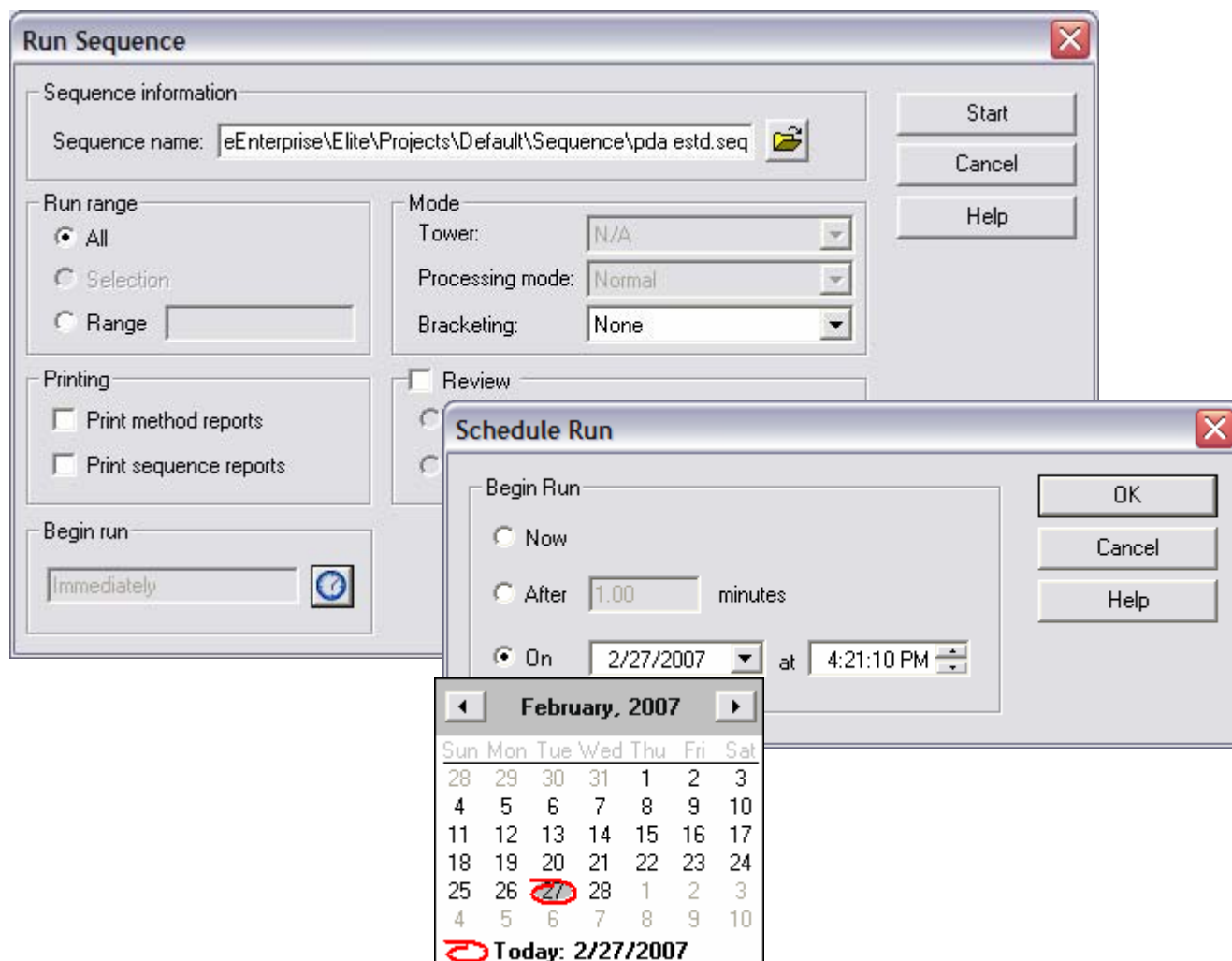
#	Test	Result	Action	Parameter
1	Calibration	Fail	Run Shutdown	
2	QC	Fail	Run Shutdown	
3				

OK

Cancel

Help

Can't We Have the System Prep'd Before the Shift Starts?



Summary – Why EZChrom *Elite*?

- Multi-Vendor Instrument Control
- Single User to Client/Server
- Powerful, Flexible Reporting
- Smart Sequence
- Customization
- Compliance

***Our Measure
is Your
Success***



Questions

