



Agilent nScope eMRI Systems

**EXPERIENCE THE EASE-OF-USE
EVOLUTION IN PRE-CLINICAL MRI**

The Measure of Confidence



Agilent Technologies

ACCESSIBLE MRI: WITNESS THE EVOLUTION

Agilent Technologies has created the nScope eMRI System to support your pre-clinical MRI research with pre-configured sequences and laboratory-tested protocols in our Cardiac and Neuro Packs, making it simple for you to achieve sophisticated imaging results. All pre-clinical researchers will enjoy the ease-of-use evolution that includes integrated animal life support, precise laser-guided sample positioning, and ergonomic animal handling.

- Optimized experimental setups for key applications
- Enhanced image analysis with color overlays
- Stable, precise sample positioning for reproducible results
- Advanced VnmrJ 3 software for fast, intuitive data acquisition

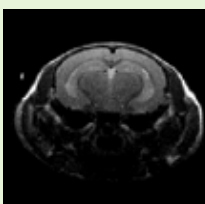
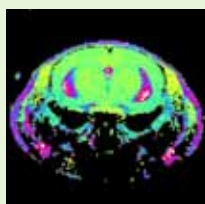
eMRI =

Easy MRI, Ergonomic MRI,
MRI for Everyone...experience
what eMRI is for YOU

Agilent Has Made Its Advanced, Application-Oriented Technology Easy, So Everyone Can Achieve Sophisticated Imaging Results



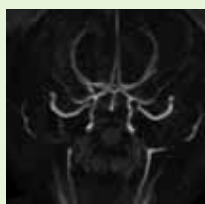
Cardiac piloting for
function assessment



Brain relaxometry
measurements to evaluate
disease models



Cardiac ultra-high field
imaging for morphology and
ventricle function assessment



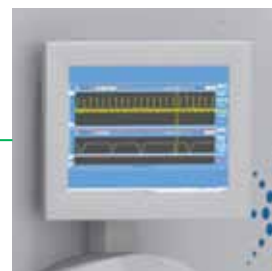
Brain angiography protocols
for stroke, ischemia, and
vessel occlusions

Access Sophisticated Imaging and Achieve Reliable, Reproducible Results

The Agilent nScope eMRI System provides application-oriented workflows so you can focus on your research while the MRI scanner collects your data. Sophisticated imaging results are at your fingertips with a clean, clinical, user interface for easy access to laboratory-tested protocols that work right out of the box. Designed with your animals in mind, the Agilent nScope eMRI is the first system that looks after the star of the show, with integrated life support and ergonomic positioning.



Easy RF tuning uses an integrated and enhanced RF chain for improved signal-to-noise.



Conveniently-located touch screen displays vital signs, gating, and RF coil tuning.



Service and patient ends feature integrated enclosures for RF shielding and acoustic noise reduction, all in a smaller footprint.



Simple, intuitive, table with exchangeable trays, dual-stage positioner, and integrated animal life support system.



Laser alignment of the stable sample positioner provides precise specimen location and eliminates motion artifacts.

nScope eMRI Applications

Mouse Brain Relaxometry
Agilent publication 5991-0322EN

Mouse Cardiac Piloting
Agilent publication 5991-0323EN

Mouse Brain Angiography
Agilent publication 5991-0324EN

Mouse Cardiac Ultra High Field MRI
Agilent publication 5991-0325EN

Learn more

www.agilent.com/lifesciences/eMRI

Email us

mri.info@agilent.com

Find a local Agilent customer center

www.agilent.com/chem/contactus

U.S. and Canada

1-800-227-9770

agilent_inquiries@agilent.com

Europe

info_agilent@agilent.com

Asia Pacific

inquiry_lsca@agilent.com

For Research Use Only. Not for use in diagnostic procedures. This information is subject to change without notice.

© Agilent Technologies, Inc. 2012
Printed in the USA, April 27, 2012
5991-0243EN



Agilent Technologies