

Effective Polybutadiene Analysis

Agilent PLgel 5 μ m MIXED-D Columns

Technical Overview

Introduction

Relatively low molecular weight polybutadiene elutes well within the range of PLgel MIXED-D columns. The PLgel 5 μ m MIXED-D column is specifically designed for the analysis of polymers, paints and resin systems where material above 400,000 MW is unlikely to be present. High pore volume, concentrated in this operating range, combined with the 5 μ m efficiency, provides excellent resolution for low MW polymers and oligomers. Two, or even three, PLgel 5 μ m MIXED-D columns are the perfect replacement for the popular $10^4/500$ Å or $10^4/10^3/500$ Å/ 100 Å column combinations.



Agilent Technologies

When calculated, the Mw was found to be 18,700 relative to polystyrene standards.

Column: 2 x PLgel 5 μ m MIXED-D, 300 x 7.5 mm
(part number PL1110-6504)
Eluent: THF
Flow Rate: 1.0 mL/min
Detection: RI

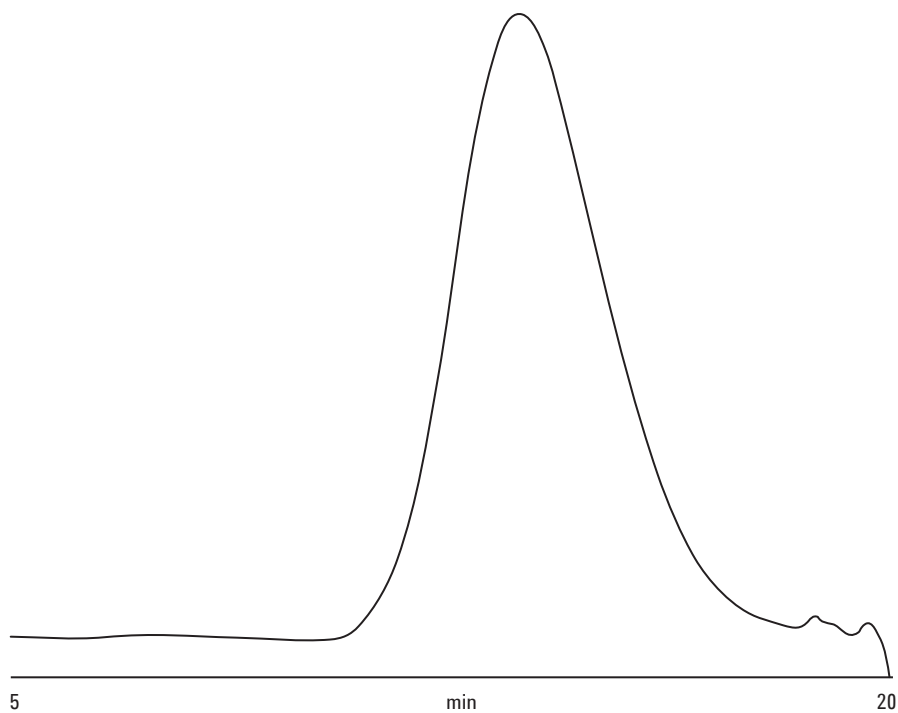


Figure 1. Analysis of polybutadiene using a PLgel MIXED-D column set

www.agilent.com/chem

This information is subject to change without notice.

© Agilent Technologies, Inc. 2010

Published in UK, September 21, 2010

SI-01832



Agilent Technologies