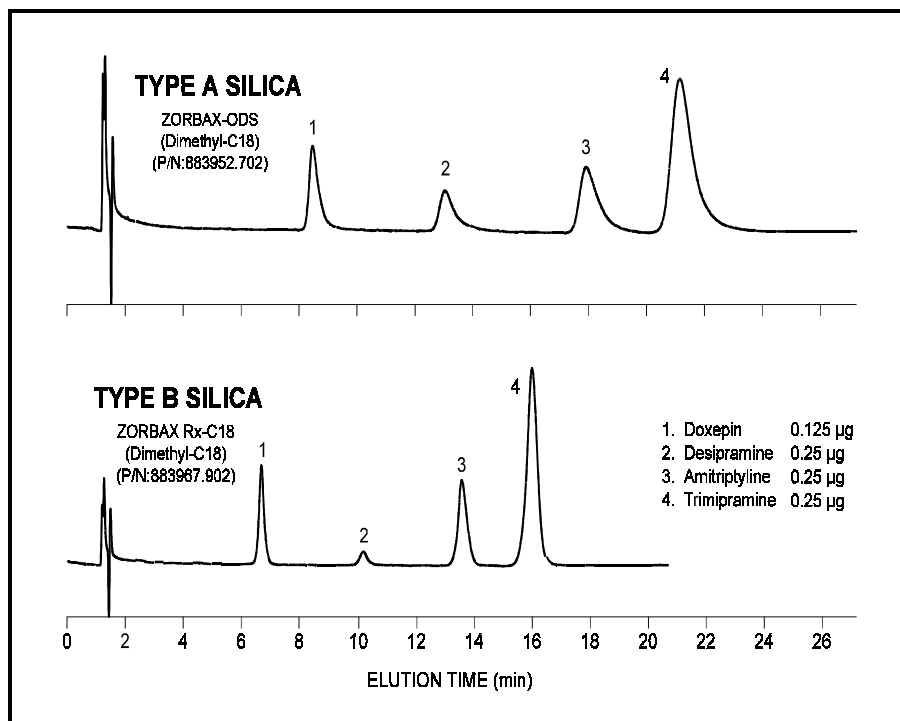




Effect of Silica-Support Type Reversed-Phase Separation of Tricyclic Antidepressants

Application
Technical
Robert Ricker



Highlights

- Highly purified, less-acidic Type-B silica support (ZORBAX Rx-SIL) results in improved band shape and column efficiency for these basic drugs.
- Reduced retention for column with Type-B silica is due to lower surface area of its support.

Conditions:
ZORBAX Columns (4.6 x 150 mm) (Agilent P/N above)
Mobile Phase: 30% ACN, 70% 25mM Sodium phosphate buffer, pH 2.5,
0.2% TEA and 0.2% TFA;
1.0 mL/min, 40°C, Detect. UV(254 nm)



Agilent Technologies

*Robert Ricker is an application chemist
based at Agilent Technologies, Wilmington,
Delaware.*

For more information on our products and
services, visit our website at:
www.agilent.com/chem

Copyright© 2002 Agilent Technologies, Inc.
All Rights Reserved. Reproduction,
adaptation or translation without prior
written permission is prohibited, except as
allowed under the copyright laws.

Agilent shall not be liable for errors
contained herein or for incidental or
consequential damages in connection with
the furnishing, performance, or use of this
material.

Information, descriptions, and specifications
in this publication are subject to change
without notice.

Printed in the USA
April 25, 2002
5988-6470EN



Agilent Technologies