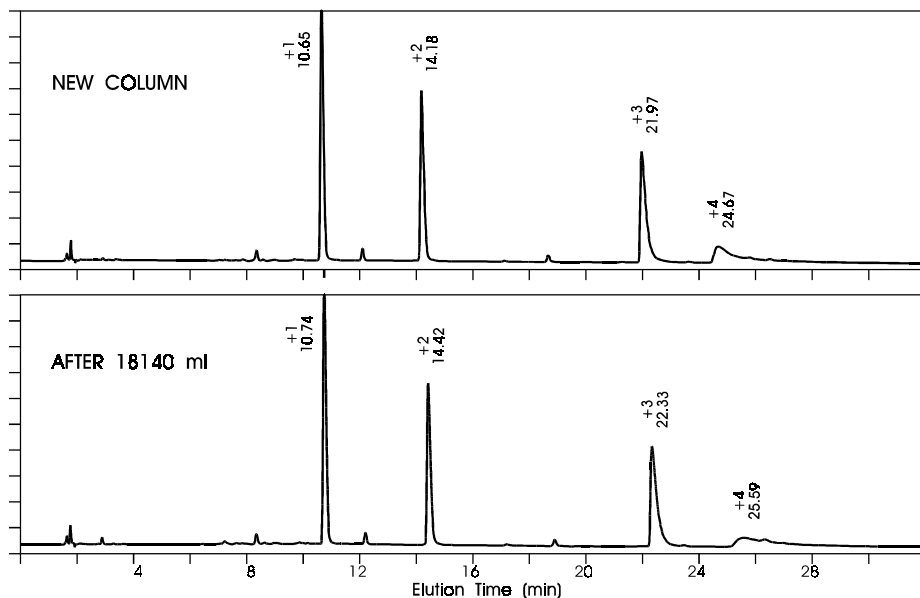


# Effect of Column Aging with Acidic Mobile Phase: Silanol-Sensitive Peptide Separation, pH 7

Application

Biochemical

Robert Ricker



## Highlights

- The peptides are small and highly charged, +1 through +4 with lysine.
- Very sensitive neutral-pH test of silanol accessibility.
- Silanol content does not change, even after 18 liters of low-pH eluent.

**Conditions:**  
ZORBAX 300SB-C8 (4.6 x 150 mm) (Agilent P/N: 883995-906)  
Mobile Phase: 10-100% B in 45 min,  
A: 10mM  $\text{NH}_4\text{H}_2\text{PO}_4$ , pH 7.0, B: 50 mM sodium perchlorate in 50% ACN / 50%  $\text{H}_2\text{O}$   
1 mL/min, 40°C, Detect. UV (214 nm)  
Charged Peptides: C.T. Mant and R.S. Hodges, 1987



Agilent Technologies

*Robert Ricker is an application chemist  
based at Agilent Technologies, Wilmington,  
Delaware.*

For more information on our products and  
services, visit our website at:  
[www.agilent.com/chem](http://www.agilent.com/chem)

Copyright© 2002 Agilent Technologies, Inc.  
All Rights Reserved. Reproduction,  
adaptation or translation without prior  
written permission is prohibited, except as  
allowed under the copyright laws.

Agilent shall not be liable for errors  
contained herein or for incidental or  
consequential damages in connection with  
the furnishing, performance, or use of this  
material.

Information, descriptions, and specifications  
in this publication are subject to change  
without notice.

Printed in the USA  
April 25, 2002  
5988-6296EN



**Agilent Technologies**