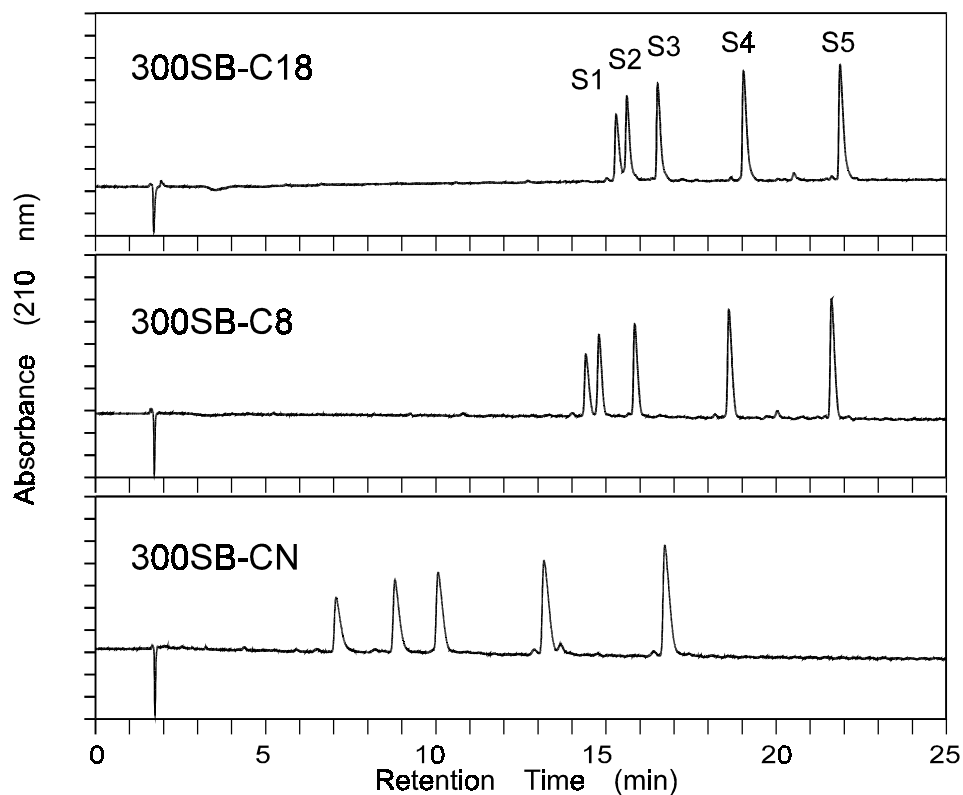


Effect of Bonded-Phase Type on a Peptide Separation

Application

Biochemical

Robert Ricker



Highlights

- Significant differences in selectivity can be achieved by changing the ZORBAX StableBond phase. Note selectivity and resolution differences for peptides S1 and S2.
- Peptides S1-S5 are decapeptides that differ in amino acids at two locations, causing only slight differences in hydrophobicity.

Conditions:
ZORBAX 300SB-C18, 300SB-C8, 300SB-CN (4.6 x 150 mm)
(Agilent P/N: 883995-902, 883995-906, 883995-905)
Mobile Phase: 0-30% B in 30 min. A=0.1% TFA in H₂O, B=0.085% TFA in ACN
Peptides, 1 mL/min, 40°C, Detect. UV (210 nm)
Peptides S1-S5, C.T. Mant and R.S. Hodges, 1986



Agilent Technologies

*Robert Ricker is an application chemist
based at Agilent Technologies, Wilmington,
Delaware.*

For more information on our products and
services, visit our website at:
www.agilent.com/chem

Copyright© 2002 Agilent Technologies, Inc.
All Rights Reserved. Reproduction,
adaptation or translation without prior
written permission is prohibited, except as
allowed under the copyright laws.

Agilent shall not be liable for errors
contained herein or for incidental or
consequential damages in connection with
the furnishing, performance, or use of this
material.

Information, descriptions, and specifications
in this publication are subject to change
without notice.

Printed in the USA
April 25, 2002
5988-6294EN



Agilent Technologies