

Comparison of Denaturing and non-Denaturing Mobile Phases in SEC: ZORBAX GF-250, +/- GuCl

Application Brief

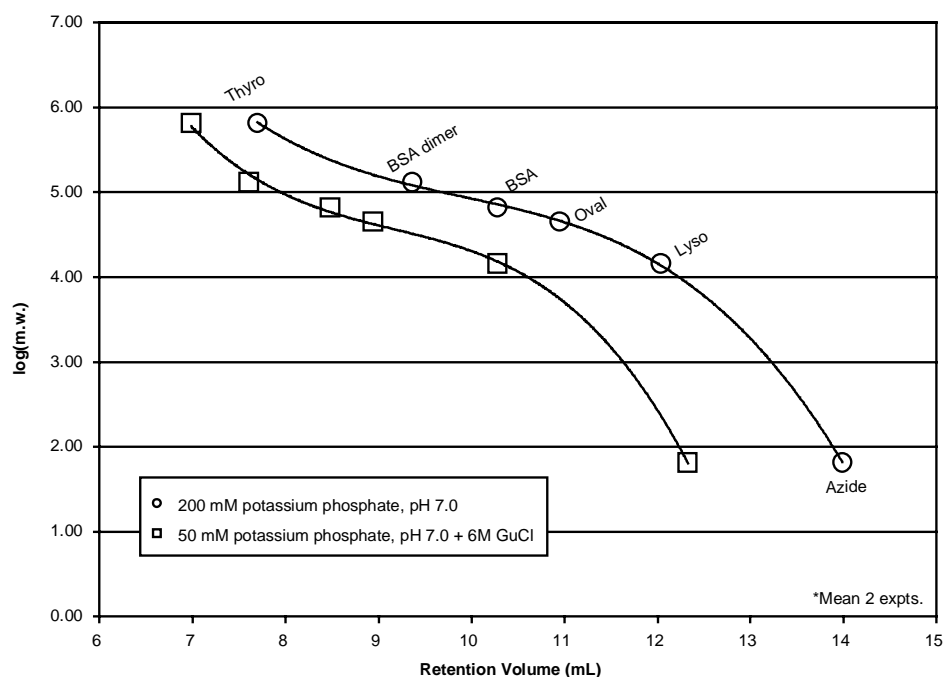
Biochemical

Robert D. Ricker

Size-exclusion chromatography is a powerful technique for the size-dependent separation of biomolecules. While standard, non-denaturing mobile phases are often desirable, denaturing mobile phases containing guanidine hydrochloride (or SDS), may be used to insure un-aggregated, monomers for proper size determination. As shown below, denaturation shifts molecules toward larger apparent size and smaller retention volume.

Highlights

- Agilent ZORBAX GF-250 columns separate biomolecules in a size-dependent manner within a molecular-weight range of 4,000-400,000 daltons. Note, some molecules (depending on their characteristics) are retained by non-SEC mechanisms and are shifted from linearity.
- ZORBAX GF-250 columns are manufactured using extremely hard particles, allowing high flow rates and fast separations.
- When larger molecules are used in combination with denaturing mobile phases, ZORBAX GF-450 may be used to obtain more-linear separation in the upper molecular-weight range.



Conditions:
LC: Hewlett Packard 1050
Column: ZORBAX GF-250 (9.4 x 250), Agilent Part No. 884973-901
UV: 254 nm
Flow: 2.0 mL / min.; ambient
Inj. Vol.: 20 μ L (1 μ g / μ L)



Agilent Technologies

Innovating the HP Way

*Robert Ricker is an application chemist based at
Agilent Technologies, Wilmington, Delaware.*

For more information on our products and services,
visit our website at: www.agilent.com/chem

Copyright© 2000 Agilent Technologies
All Rights Reserved. Reproduction, adaptation or
translation without prior written permission is
prohibited, except as allowed under the copyright
laws.

Publication Number 5980-1392E



Agilent Technologies
Innovating the HP Way