

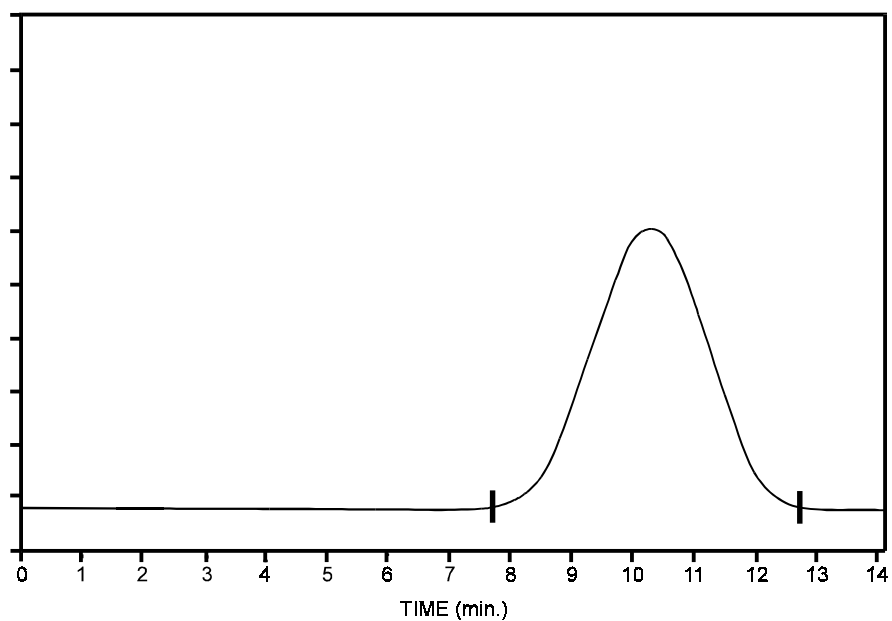


# Commercial Polyethylene

Application

Polymers

Robert Ricker



Conditions: Instrument: DuPont HTSEC - System 1  
ZORBAX PSM Bimodal Set (Agilent P/N: 880957-814)  
Mobile Phase: o-Dichlorobenzene; Flow Rate: 0.75 ml/min.  
Temperature: 140°C Detector: Infrared (3.4  $\mu$ m)

## Highlights

- *HPSEC of polyethylene requires operation at elevated temperature (e.g. 140°C) and with aggressive solvent systems - (o-dichlorobenzene).*
- *ZORBAX PSM size exclusion columns are very stable with use of aggressive solvent systems.*



**Agilent Technologies**

*Robert Ricker is an application chemist  
based at Agilent Technologies, Wilmington,  
Delaware.*

For more information on our products and  
services, visit our website at:  
[www.agilent.com/chem](http://www.agilent.com/chem)

Copyright© 2002 Agilent Technologies, Inc.  
All Rights Reserved. Reproduction,  
adaptation or translation without prior  
written permission is prohibited, except as  
allowed under the copyright laws.

Agilent shall not be liable for errors  
contained herein or for incidental or  
consequential damages in connection with  
the furnishing, performance, or use of this  
material.

Information, descriptions, and specifications  
in this publication are subject to change  
without notice.

Printed in the USA  
April 25, 2002  
5988-6373EN



**Agilent Technologies**