

# Careful Column Choice Improves Analytical Quality Agilent PLgel Columns

## Technical Overview

### Introduction

When individual pore size columns are used in series with mixed gel columns, the calibration curve shows a dislocation and is non-linear. The dislocation coincides with the exclusion limit of the individual pore size column. Using mixed gel columns in series avoids dislocation.

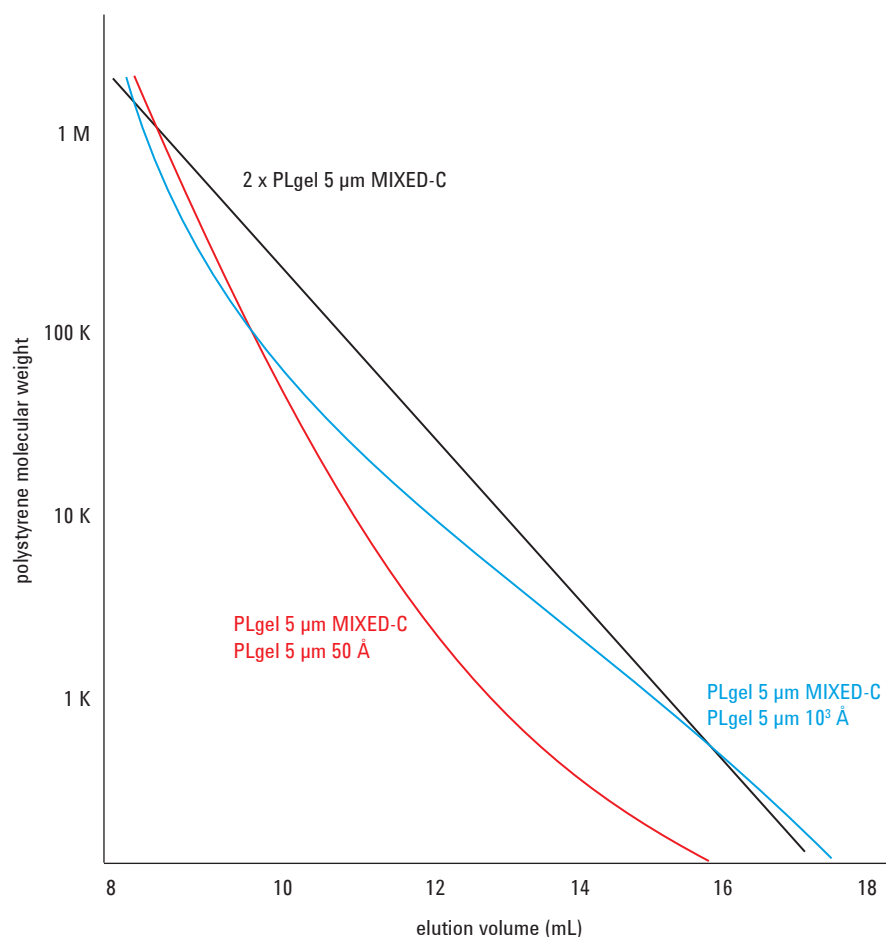


**Agilent Technologies**

PLgel is a highly crosslinked porous polystyrene/divinyl benzene matrix. PLgel columns have high pore volumes and high efficiency for maximum resolution. Wide solvent compatibility makes for easy transfer between polar and non-polar solvents. The columns' outstanding physical rigidity gives extended lifetimes, especially at high temperatures and in aggressive solvents.

#### Conditions

Eluent: THF  
Flow Rate: 1.0 mL/min



**Figure 1. When individual pore size columns are used in series with mixed gel columns, the calibration curve shows a dislocation and is non-linear**

[www.agilent.com/chem](http://www.agilent.com/chem)

This information is subject to change without notice.

© Agilent Technologies, Inc. 2010

Published in UK, September 23, 2010

SI-01750



**Agilent Technologies**