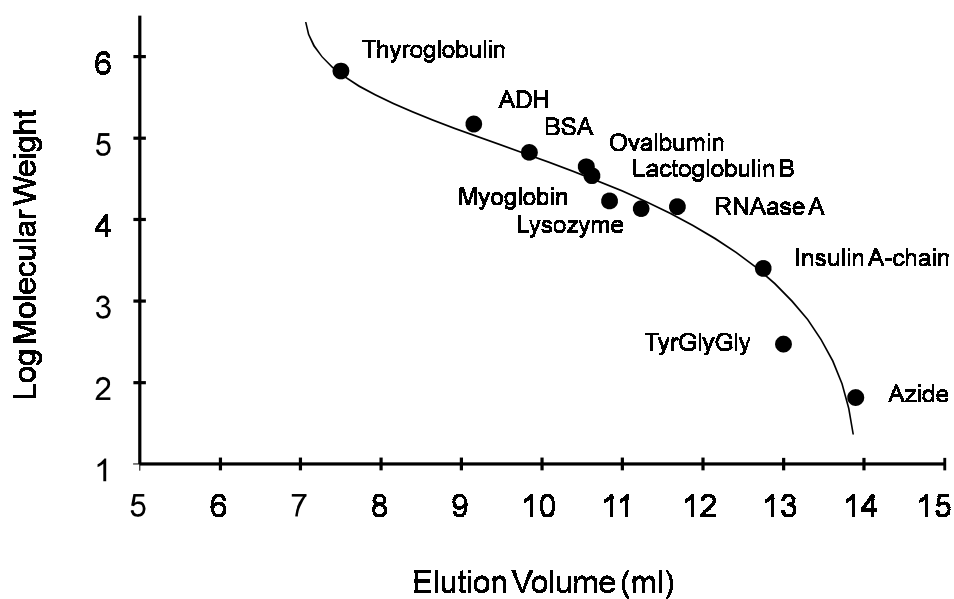


Calibration of the ZORBAX GF-250 Column with Globular Proteins

Application
Technical
Robert Ricker



Highlights

- Separation range for ZORBAX GF-250 is 4000 to 400,000 Daltons.
- Good calibration achieved for mixture of proteins of different *pI* and hydrophobicity.

Conditions:
ZORBAX BioSeries GF-250 9.4 x 250 mm (Agilent P/N: 884973-901)
Mobile Phase: 0.2 M NaH₂PO₄, pH 7.0
Detection: UV 230 nm



Agilent Technologies

*Robert Ricker is an application chemist
based at Agilent Technologies, Wilmington,
Delaware.*

For more information on our products and
services, visit our website at:
www.agilent.com/chem

Copyright© 2002 Agilent Technologies, Inc.
All Rights Reserved. Reproduction,
adaptation or translation without prior
written permission is prohibited, except as
allowed under the copyright laws.

Agilent shall not be liable for errors
contained herein or for incidental or
consequential damages in connection with
the furnishing, performance, or use of this
material.

Information, descriptions, and specifications
in this publication are subject to change
without notice.

Printed in the USA
April 25, 2002
5988-6466EN



Agilent Technologies